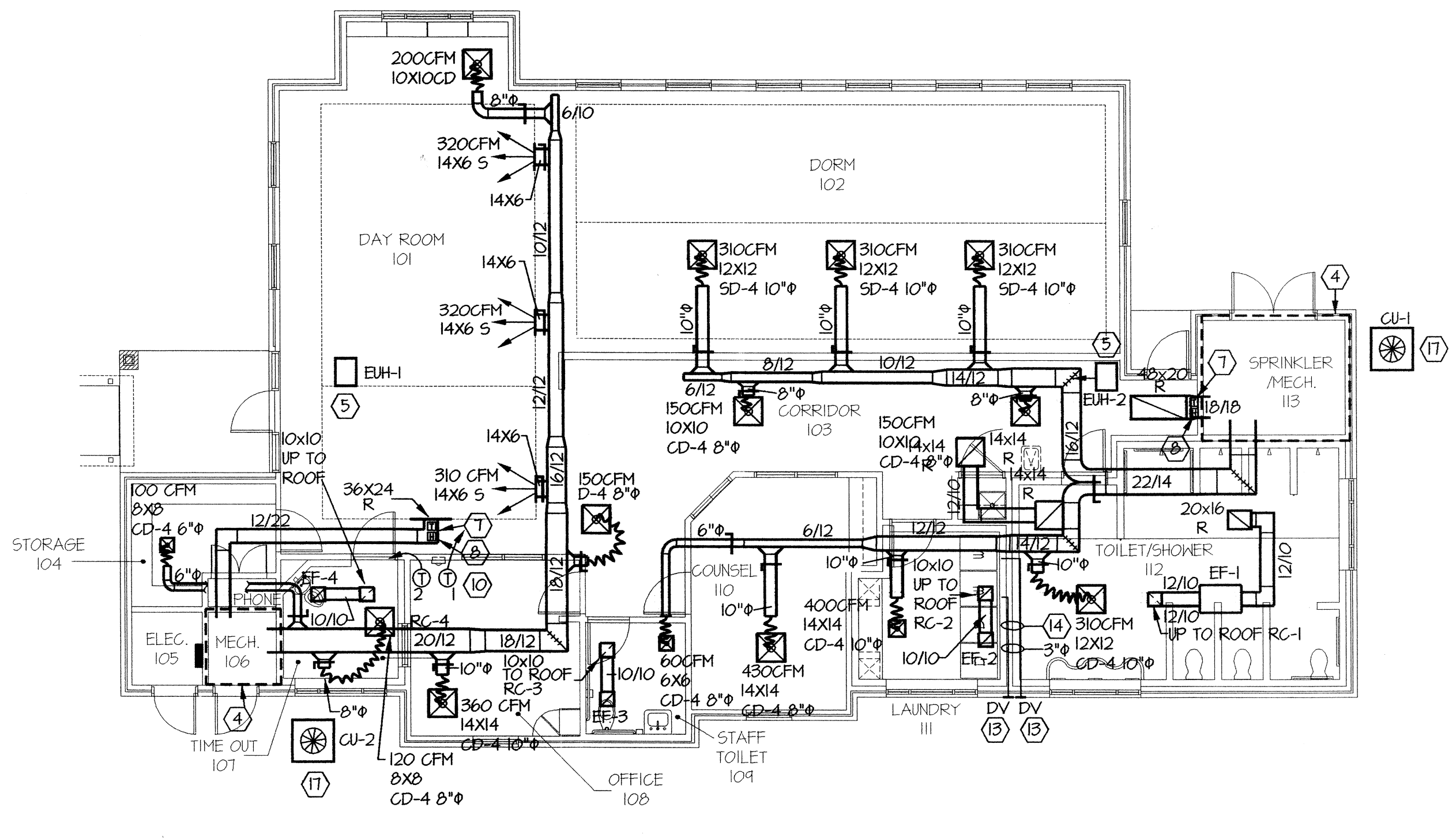


TYPICAL FLOOR PLAN RESIDENCE UNITS (ONE OF FOUR) - PLUMBING
SCALE: 1/8" = 1'-0"



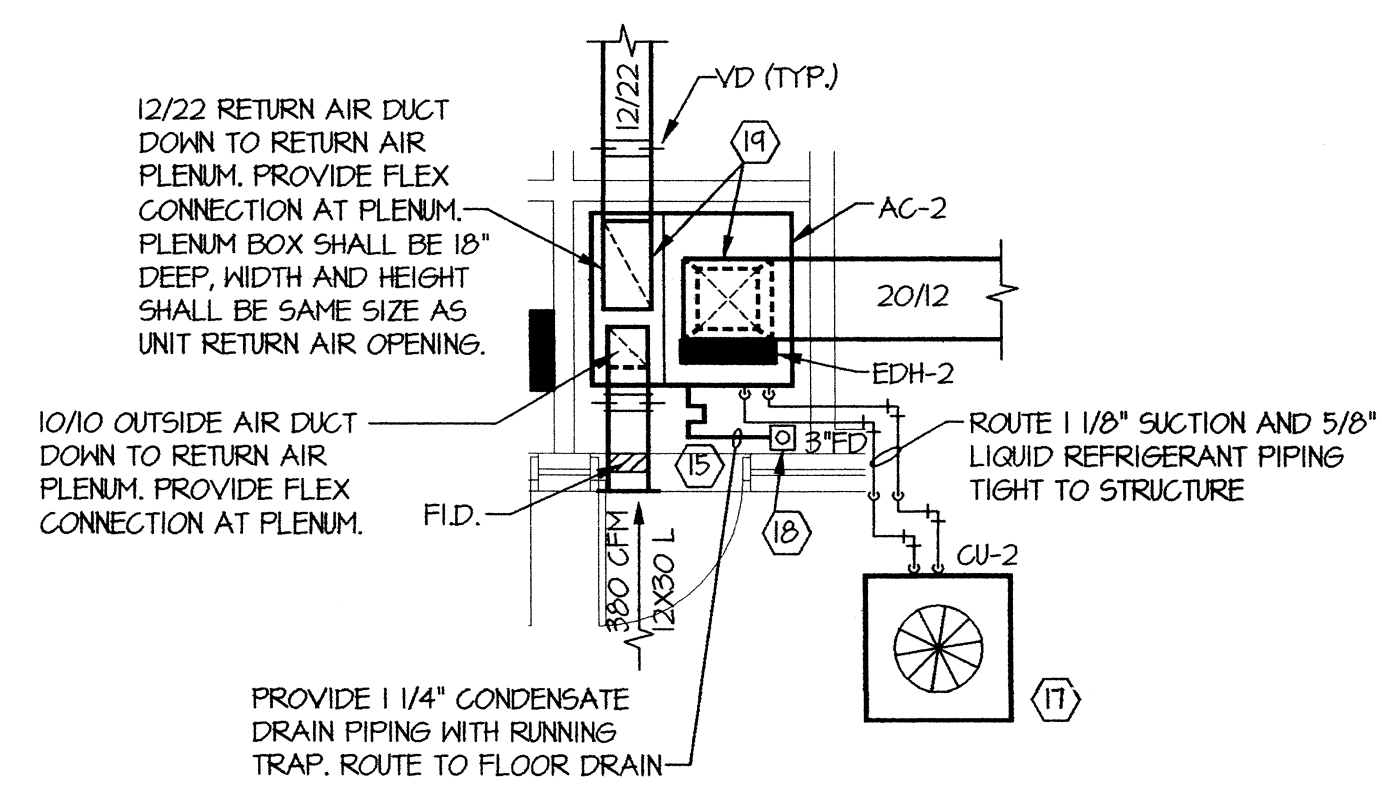
TYPICAL FLOOR PLAN RESIDENCE UNITS (ONE OF FOUR) - HVAC
SCALE: 1/8" = 1'-0"

GENERAL NOTES THIS SHEET:

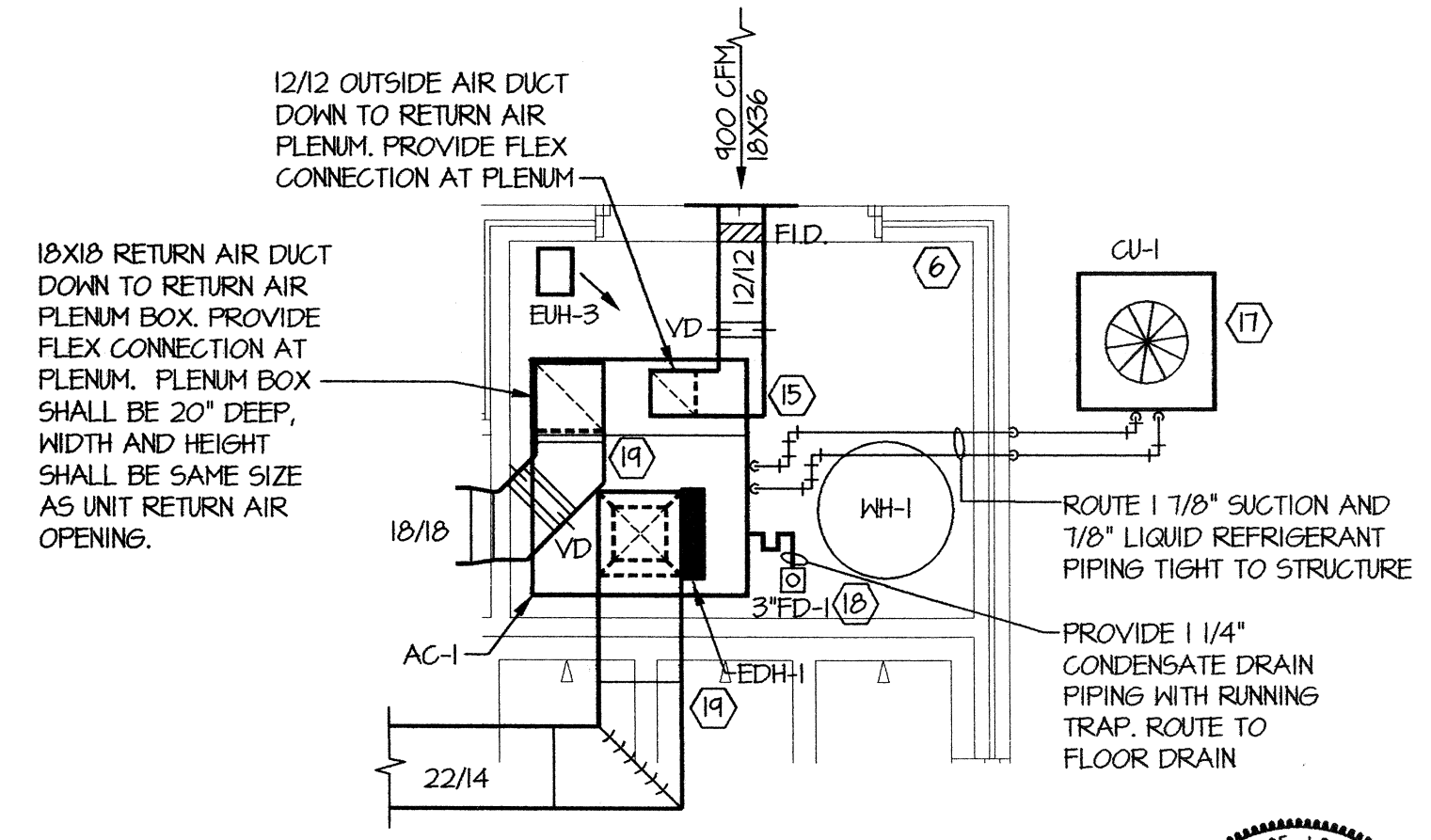
- A. ALL WASTE PIPING SHOWN SHALL BE RUN BELOW SLAB UNLESS NOTED OTHERWISE.
- B. HANG ALL UNDERGROUND PIPING FROM SLAB. SEE DETAIL ON SHEET M-12.
- C. ALL HM, CM, AND VENT PIPING SHALL BE RUN ABOVE CEILING UNLESS NOTED OTHERWISE.
- D. SEE PLUMBING RISER DIAGRAM FOR PIPE SIZING NOT SHOWN ON PLANS.
- E. ENTIRE BUILDING SHALL BE PROTECTED WITH A FULLY AUTOMATIC SPRINKLER SYSTEM. SEE SHEET FP-1 AND FP-2.
- F. COORDINATE EXACT ROUTING OF ALL PIPING SO AS NOT TO CONFLICT WITH OTHER TRADES INCLUDING DUCTWORK AND ELECTRICAL.
- G. DUCT SIZES SHOWN ARE FREE AREA SIZES, SEE SPECIFICATIONS FOR DUCT MATERIALS AND INSULATION REQUIRED. INSULATE DIFFUSER BACK PANS. SEE SHEET M-11 FOR DETAILS. CONTRACTOR SHALL INTERNALLY LINE AND EXTERNALLY INSULATE FIRST 10' OF SUPPLY AND RETURN AIR DUCTWORK.
- H. COORDINATE EXACT ROUTING OF ALL DUCTWORK SO AS NOT TO CONFLICT WITH OTHER TRADES. COORDINATE EXACT LOCATION OF ALL CEILING GRILLES WITH LIGHTS, SPRINKLER, ETC. ALL DUCTWORK SHALL BE ROUTED THRU TRUSS SYSTEM. COORDINATE ALL DUCT RUNS WITH TRUSS MANUFACTURER PRIOR TO SUBMITTING DUCTWORK SHOP DRAWINGS. CONTRACTOR IS RESPONSIBLE FOR ALL COORDINATION OF DUCT ROUTING THRU TRUSS SYSTEM AND SHALL COORDINATE, REVIEW THE ARCHITECTURAL AND STRUCTURAL DRAWINGS.
- I. CONTRACTOR IS CAUTIONED NOT TO FABRICATE OR INSTALL ANY DUCTWORK UNTIL DUCTWORK SHOP DRAWINGS HAVE BEEN SUBMITTED AND APPROVED BY ENGINEER. REPRODUCTION OF CONTRACT DOCUMENTS NOT ACCEPTABLE.
- J. FLEX DUCT RUN OUTS TO SUPPLY AIR CEILING DIFFUSERS SHALL MATCH DIFFUSER NECK SIZES. MAXIMUM FLEX DUCT RUN OUTS SHALL BE LIMITED TO 5'-0". SUBSTITUTE RIGID METAL ROUND DUCTWORK IN LIEU THEREOF.
- K. DUCT INSULATION SHALL BE MINIMUM R-5 FOR DUCTWORK ROUTED ABOVE CEILING WITHIN BUILDING ENVELOPE. DUCT INSULATION OUTSIDE THE BUILDING ENVELOPE SHALL BE MINIMUM R-8.
- L. FLEXIBLE DUCT CONNECTIONS SHALL BE MECHANICALLY FASTENED AND SEALED TO PREVENT LEAKAGE.
- M. PROVIDE MANUAL VOLUME DAMPER AT ALL UNIT OUTSIDE AIR INTAKES. PROVIDE VOLUME DAMPERS AT ALL TAPS INTO MAIN DUCT RUNS.
- N. ALL SEAMS AND JOINTS ON METAL DUCT SHALL BE SEALED USING AN ELASTOMERIC TAPE. SEE SPECIFICATIONS.
- O. HVAC SYSTEM SHALL BE CONTROLLED BY PROGRAMMABLE THERMOSTAT. SEE SPECIFICATION FOR REQUIREMENTS.
- P. PROVIDE FIRE DAMPERS IN ALL RATED PARTITIONING WHERE DUCTWORK PENETRATES. SEE SHEET M-11 FOR INSULATION DETAILS.
- Q. SEE SHEET M-11 FOR ALL DUCT BRANCH CONNECTION REQUIREMENTS.
- R. SIZE ALL REFRIGERANT PIPING PER MANUFACTURER RECOMMENDATION FOR INSTALLATION REQUIREMENTS. INSULATE SUCTION WITH 3/4" THICK CLOSED CELL INSULATION. VERIFY PIPE SIZES SHOWN WITH MANUFACTURER BEFORE INSTALLATION.
- S. CONTRACTOR SHALL SEAL ALL ENDS OF OPEN DUCTWORK INCLUDING INSTALLED AND STORED DUCT ON SITE, AS TO NOT ALLOW CONSTRUCTION DUST AND DEBRIS TO GET INTO DUCTWORK.
- T. CONTRACTOR SHALL SUBMIT FOR REVIEW A DETAILED 1/4" SCALE LAYOUT OF ALL MECHANICAL EQUIPMENT ROOMS. DRAWING SHALL SHOW ALL EQUIPMENT, PIPING AND DUCTWORK. EACH TRADE SHALL COORDINATE ALL WORK PRIOR TO SUBMISSION AND INSTALLATION OF EQUIPMENT, PIPING AND DUCTWORK.

SPECIFIC NOTES THIS SHEET:

- ① 6" COMBINATION FIRE/DOMESTIC WATER UNDERGROUND PIPING. SEE CIVIL DRAWINGS FOR CONTINUATION. COORDINATE LOCATION AND PROVIDE PROPER TIE-IN TO WORK DONE UNDER CIVIL.
- ② 6" SEWER PIPING. SEE CIVIL DRAWINGS FOR CONTINUATION. COORDINATE LOCATION AND PROVIDE PROPER TIE-IN TO WORK DONE UNDER CIVIL.
- ③ SEE FIRE/DOMESTIC WATER ENTRANCE DETAIL ON SHEET M-8.
- ④ SEE THIS SHEET FOR LARGE SCALE ROOM LAYOUT.
- ⑤ ELECTRIC UNIT HEATER IN ATTIC FOR SPRINKLER PIPING FREEZE PROTECTION.
- ⑥ SEE SHEET FP-1 FOR SPRINKLER WATER ENTRANCE.
- ⑦ TEMPERATURE SENSOR INSTALLED IN RETURN AIR DUCT.
- ⑧ HUMIDITY SENSOR INSTALLED IN RETURN AIR DUCT.
- ⑨ NO PIPING TO BE ROUTED IN THIS AREA.
- ⑩ LOCATION OF AC UNIT 1 AND 2 CONTROLS.
- ⑪ SEE WATER HEATER INSTALLATION DETAIL ON SHEET M-8, FOR REQUIREMENTS.
- ⑫ CLEAN OUT IN CAST IRON BOX. SEE DETAIL ON SHEET M-8.
- ⑬ PROVIDE HOODED WALL CAP FOR DRYER EXHAUST.
- ⑭ ROUTE 3" DRYER DUCT IN WALL TO WEATHER HOOD 24" AFF.
- ⑮ REFRIGERATED AND DRAIN PIPING SHALL BE ROUTED AND INSTALLED AS NOT TO BLOCK OR CONFLICT WITH AC UNIT ACCESS PANELS.
- ⑯ LOCATION OF BUILDING REMOTE WATER SHUT OFF SWITCH.
- ⑰ COORDINATE EXACT LOCATION OF CONDENSING UNITS WITH ARCHITECT PRIOR TO ROUGH IN AND INSTALLATION.
- ⑱ COORDINATE EXACT LOCATION OF FLOOR DRAIN WITH HVAC CONTRACTOR PRIOR TO ROUGH-IN.
- ⑲ PROVIDE INTERNAL DUCT LINER IN FIRST 10' OF SUPPLY AND RETURN AIR DUCT. SEE SPECIFICATIONS FOR INSULATION REQUIREMENTS.



LARGE SCALE MECHANICAL ROOM
106 EQUIPMENT LAYOUTS
SCALE: 1/4" = 1'-0"



LARGE SCALE MECHANICAL ROOM
113 EQUIPMENT LAYOUTS
SCALE: 1/4" = 1'-0"



THE INFORMATION CONTAINED IN THIS DOCUMENT IS PROPRIETARY TO LUCIEN T. VIVIEN, JR. & ASSOC., INC. THE DOCUMENT MAY NOT BE DISCLOSED, REPRODUCED, COPIED, OR USED FOR ANY PURPOSE, IN WHOLE OR IN PART, WITHOUT THE PRIOR WRITTEN CONSENT OF LUCIEN T. VIVIEN, JR. & ASSOC., INC.

THESE PLANS AND SPECIFICATIONS HAVE BEEN PREPARED BY OR UNDER OUR CLOSE PERSONAL SUPERVISION AND, TO THE BEST OF OUR KNOWLEDGE AND BELIEF, THEY COMPLY WITH ALL CITY REQUIREMENTS. WE ARE GENERALLY ADMINISTERING THE WORK.

LUCIEN T. VIVIEN, JR. & ASSOC., INC.
PER: *Lucien Eugene Vivien*
REG. NO.: 7955