

CONNECTION	FRAMING SPACING (ft.)	ROOF SPAN (ft.)	U	L	S	NUM. OF 8d COM. NAILS OR 10d BOX NAILS IN EA. END OF 1/2" X 20d GAL. STRAP
ROOF ASSEMBLY TO WALL ASSEMBLY	16'-0" C.	11	396	246	109R	4
WALL ASSEMBLY TO WALL ASSEMBLY	16'-0" C.	11	396	246	109R	4
WALL ASSEMBLY TO FOUNDATION	16'-0" C.	11	110	105	436	4

THERMAL COMPONENT CRITERIA (U-FACTOR AND R-VALUE)

MAX. GLAZING U-FACTOR	MINIMUM INSULATION R-VALUE		
	CEILING	WALLS	FLOORS
.75	R-26	R-19	R-11
			BASEMENT WALLS
			R-5
			CREAM SPACE WALLS
			R-5

WINDBORNE DEBRIS PROTECTION FASTENING SCHEDULE FOR WOOD STRUCTURAL PANELS

FASTENER TYPE	FASTENER SPACING		
	PANEL SPAN 5.4 FOOT	4 FOOT PANEL SPAN 5 FOOT	6 FOOT PANEL SPAN 5.8 FOOT
2-1/2" #6 WOOD SCREWS	16"	12"	9"
3-1/2" #6 WOOD SCREWS	16"	12"	12"

ANDOVER IN BUILDINGS LOCATED IN AND BORNIE DEBRIS REGIONS SHALL HAVE GLAZED OPENINGS PROTECTED FROM AND BORNE DEBRIS. WOOD STRUCTURAL PANELS WITH A MIN. THICKNESS OF 7/16" AND A MAX. SPAN OF 8 FEET SHALL BE PERMITTED FOR OPENING PROTECTION IN ONE AND TWO STORY BUILDINGS. PANELS SHALL BE PERMITTED TO COVER THE GLAZED OPENINGS WITH ATTACHMENT HARDWARE PROVIDED.

WALL SHEATH OR CLAD REQ FOR WIND LOAD-EXPOSURE "C"

SHEATHING LOCATION	STUD SPACING	MAX. NAIL SPACING FOR 8d COMMON NAILS OR 10d BOX NAILS (INCHES, O.C.)	
		E	F
INTERIOR ZONE	12' O.C.	6	12
	16' O.C.	6	12
	24' O.C.	6	12
PERIMETER EDGE ZONE	12' O.C.	6	12
	16' O.C.	6	12
	24' O.C.	6	12

DESCRIPTION	NUM. OF COM. NAILS	NUM. OF BOX NAILS	SPACING	HEAD TO HEAD (FACE-NAIL)
				6" O.C. EDGES/ 12" O.C. FIELD
HEAD TO HEAD (FACE-NAIL)	8d	10d	12"	12" O.C. FIELD

NOTE: ALL HEADERS SHALL HAVE SOLID BLOCKING

ROOF UNDERLAYMENT APPLICATION

-FOR ROOF SLOPES FROM TWO UNITS VERTICAL IN 12 UNITS HORIZONTAL (17-PERCENT SLOPE), UP TO FOUR UNITS VERTICAL IN 12 UNITS HORIZ. (33-PERCENT SLOPE), UNDERLAYMENT SHALL BE TWO LAYERS APPLIED IN THE FOLLOWING MANNER:

-APPLY A 14 INCH STRIP OF UNDERLAYMENT FELT PARALLEL WITH AND STARTING AT THE EAVES, FASTENED SUFFICIENTLY TO HOLD IN PLACE. STARTING AT THE EAVE, APPLY 36 INCH WIDE SHEETS OF UNDERLAYMENT OVERLAPPING SUCCESSIVE SHEETS 14 INCHES, AND FASTENED SUFFICIENTLY TO HOLD IN PLACE.

-FOR ROOF SLOPES OF FOUR UNITS VERTICAL IN 12 UNITS HORIZONTAL, (33-PERCENT SLOPE) OR GREATER, UNDERLAYMENT SHALL BE ONE LAYER APPLIED IN THE FOLLOWING MANNER:

-UNDERLAYMENT SHALL BE APPLIED SINGLE PLY, PARALLEL TO AND STARTING FROM THE EAVE AND LAPPED 2 INCHES. FASTENED SUFFICIENTLY TO HOLD IN PLACE. END LAYS SHALL BE FASTENED BY 6 STRIPS.

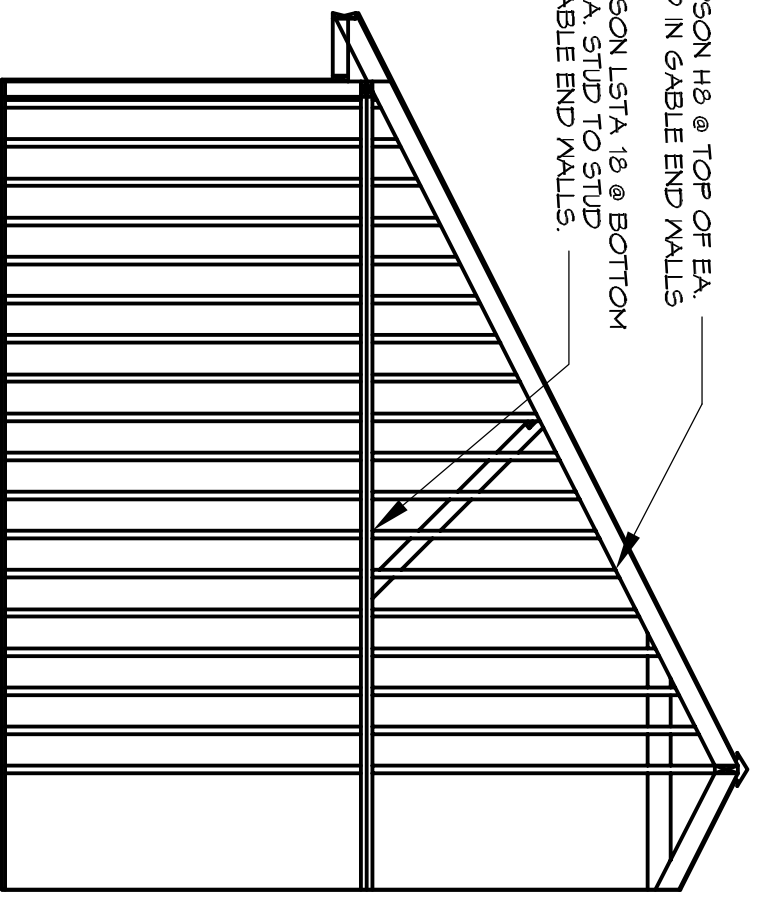
SINGLE APPLICATION/FASTENING

ASPHALT STRIP SHINGLES SHALL HAVE A MINIMUM OF SIX FASTENERS PER SHINGLE. WHERE THE ROOF IS IN ONE OF THE FOLLOWING CATEGORIES:
1. THE BASIC WIND SPEED IS 110 MPH OR GREATER AND THE EAVE IS 20 FEET OR MORE FROM THE GROUND.
2. THE BASIC WIND SPEED IS 120 MPH OR GREATER.
3. SPECIAL WIND ZONES.

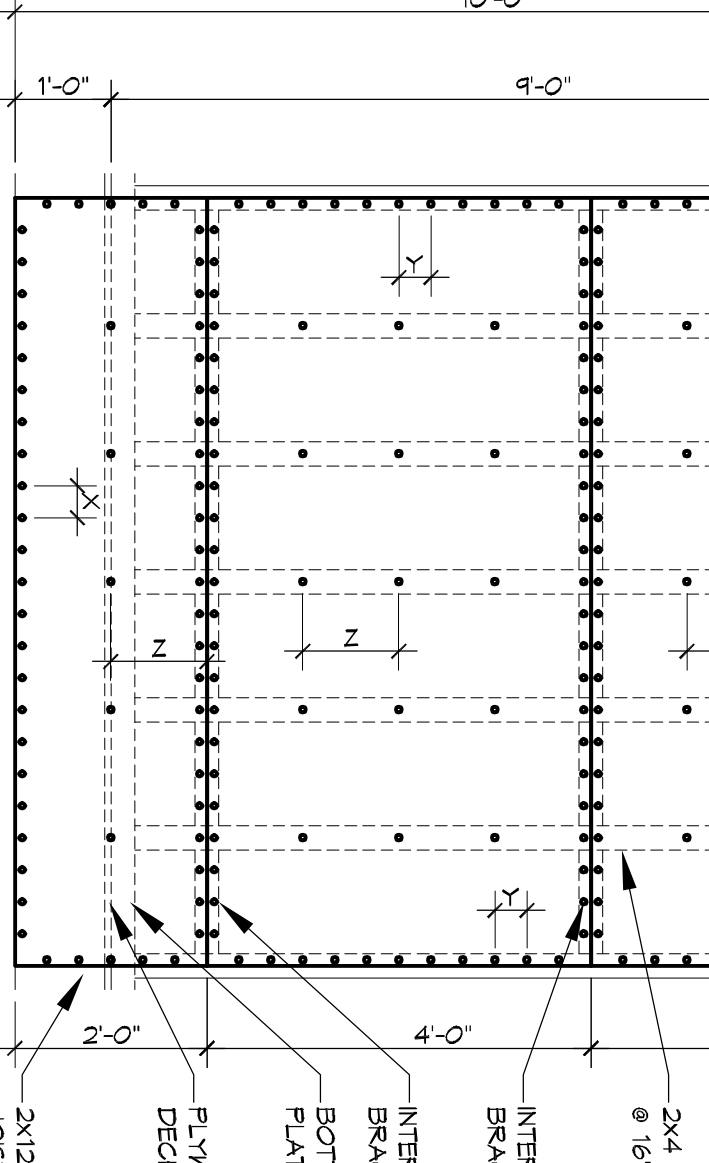
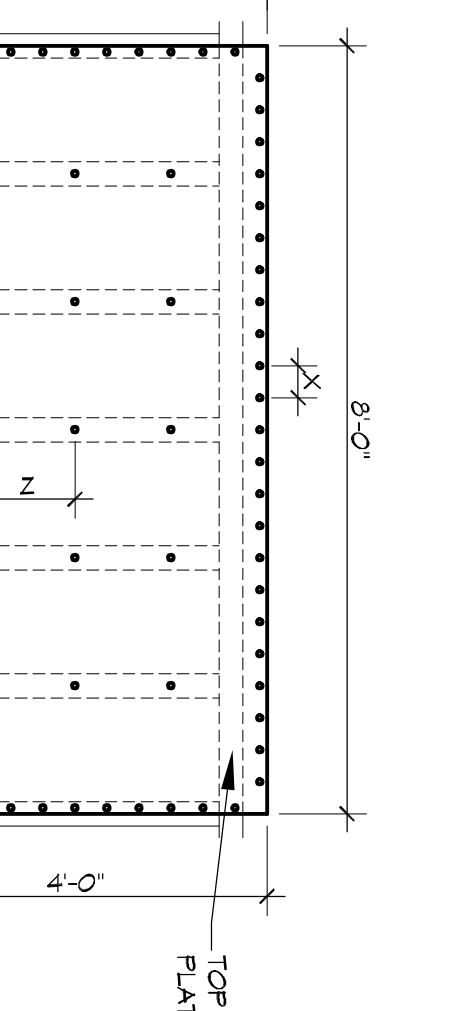
UPLIFT CONNECTIONS

ROOF ASSEMBLY TO WALL ASSEMBLY: UPLIFT CONNECTIONS SHALL BE FROM RAFTER OR TRUSS TO WALL STUD, WHEN RAFTERS OR TRUSSES ARE NOT LOCATED DIRECTLY ABOVE STUDS, RAFTERS SHALL BE ATTACHED TO THE WALL PLATE AND THE WALL TOP PLATE SHALL BE ATTACHED TO THE WALL STUD WITH UPLIFT CONNECTIONS. UPLIFT CONNECTIONS SHALL BE IN ACCORDANCE WITH TABLE.

WALL ASSEMBLY TO FOUNDATION: FIRST FLOOR WALL STUDS SHALL BE CONNECTED TO THE FOUNDATION SILL, PLATE OR BOTTOM PLATE. A MINIMUM OF A 1-1/4" X 20 GALV ANCHOR BOLT PER STUD SHALL BE WELDED TO THE WALL STUDS AND HAVE A MINIMUM EMBEDMENT OF 1 INCHES IN CONCRETE FOUNDATIONS AND SLABS-ON-GRADE. 15 PERCENT OF STUDS SHALL BE WELDED TO THE FOUNDATION SILL, PLATE OR BOTTOM PLATE. 3 INCH SQUARE WASHERS SHALL BE USED ON THE ANCHOR BOLTS AND ANCHOR BOLT SPACINGS SHALL NOT EXCEED THE REQUIREMENTS. STEEL STRAPS EMBEDDED IN OR IN CONTACT WITH SLAB-ON-GRADE OR MASONRY BLOCK FOUNDATIONS SHALL BE HOT-DIPPED GALV. AFTER FABRICATION OR WAJF FROM 9/85 OR 2450 GALV. STL CONNECTIONS SHALL BE IN ACCORDANCE WITH TABLE.



END WALL STRAPPING



JACK STUD BEARING WALLS - INT LOAD BEARING WALLS

HEADER SPACING	ROOF SPAN (ft.)					
	12 FEET	14 FEET	16 FEET	18 FEET	20 FEET	24 FEET
2	1	1	1	1	1	1
4	1	1	1	1	1	1
6	1	1	1	1	1	1
8	1	1	1	1	1	1
10	1	1	1	1	1	1
12	1	1	1	1	1	1
14	2	1	1	1	1	1
16	2	1	1	1	1	1
18	2	1	1	1	1	1
20	2	1	1	1	1	1
24	2	1	1	1	1	1

SILL OR BOTTOM PLATE TO END CONNECTIONS - RESISTING UPLIFT LOADS - 130MPH WINDS EXP "B"

BOTTOM PLATE TO END CONNECTION RESISTING	MAX. ANCHOR BOLT SPACING (ft.)	
	FOUNDATION SUPPORTING	INTERIOR ZONES
UPLIFT LOADS	1-3 STORES	28
		33

SILL OR BOTTOM PLATE TO END CONNECTIONS - RESISTING SHEAR LOADS - 130MPH WINDS EXP "B"

BOTTOM PLATE TO END CONNECTION RESISTING	MAX. ANCHOR BOLT SPACING (ft.)	
	FOUNDATION SUPPORTING	INTERIOR ZONES
SHEAR LOADS	1-3 STORES	30
		45

HEADER SPANS - INTERIOR LOAD BEARING WALLS

HEADER SPACING	BLDG. WIDTH (ft.)		
	12	24	36
(2) 2x4s	4'-4"	3'-1"	2'-6"
(2) 2x6s	6'-5"	4'-6"	3'-8"
(2) 2x8s	8'-1"	5'-4"	4'-8"
(2) 2x10s	9'-11"	7'-0"	5'-4"
(3) 2x10s	10'-2"	7'-2"	6'-1"
(3) 2x12s	12'-5"	8'-4"	7'-2"
(4) 2x12s	14'-4"	10'-2"	8'-3"
(4) 2x12s	11'-6"	8'-3"	6'-4"
(4) 2x12s	14'-4"	10'-1"	8'-3"
(4) 2x12s	14'-4"	11'-4"	8'-1"
(2) 2x4s	2'-10"	2'-1"	1'-6"
(2) 2x6s	4'-2"	3'-1"	2'-3"
(2) 2x8s	5'-4"	3'-11"	3'-3"
(2) 2x10s	6'-6"	4'-4"	3'-11"
(2) 2x12s	7'-6"	5'-6"	4'-7"
(2) 2x12s	6'-9"	5'-6"	4'-7"
(3) 2x10s	8'-1"	6'-0"	4-11"
(4) 2x12s	9'-5"	6'-0"	5-4"
(4) 2x12s	7'-8"	5'-8"	4'-8"
(4) 2x12s	10'-10"	8'-0"	6'-1"

NOTE: ALL HEADERS SHALL HAVE SOLID BLOCKING

ROOF SHEATH OR CLAD REQ - WIND LOAD EXP "C"

SHEATHING LOCATION	RAFTER/ TRUSS SPAC.	MAX. NAIL SPAC. FOR 8d COM. NAILS OR 10d BOX NAILS (INCHES, O.C.)	
		E	F
INTERIOR ZONE	12' O.C.	6	12
	16' O.C.	6	12
	24' O.C.	6	12
PERIMETER EDGE ZONE	12' O.C.	6	12
	16' O.C.	6	12
	24' O.C.	6	12

130 MPH WINDS-EXPOSURE "C" (TPF)

HEADER SPANS-EXPOSURE C FOR EXTERIOR LOAD BEARING WALLS

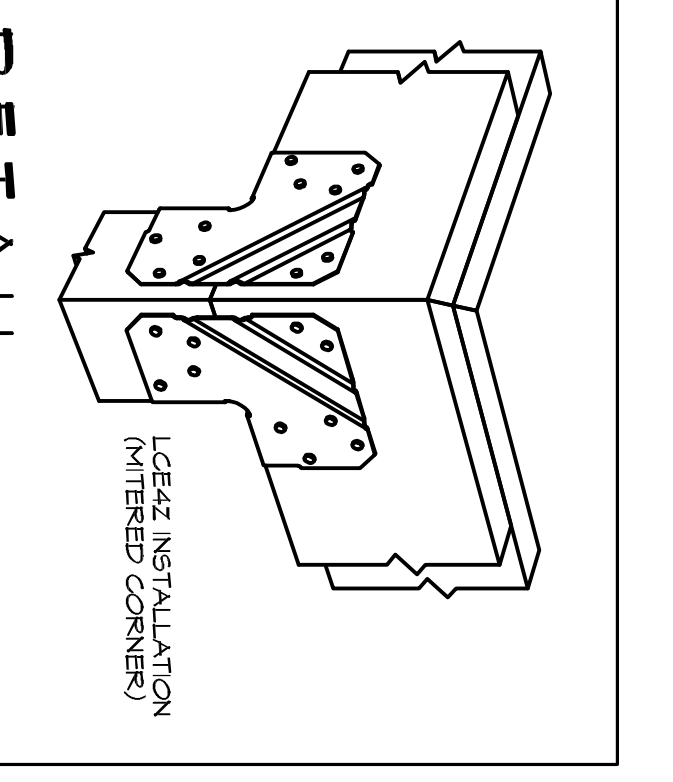
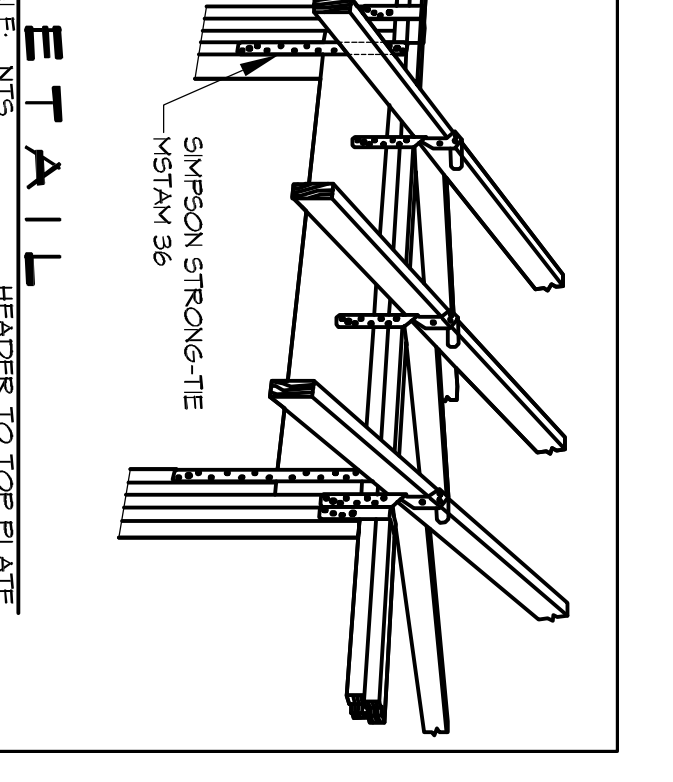
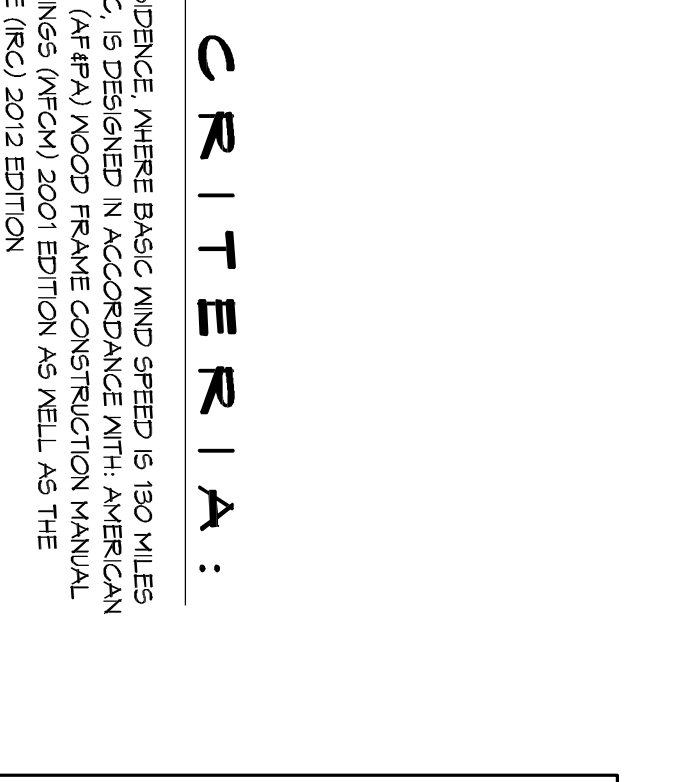
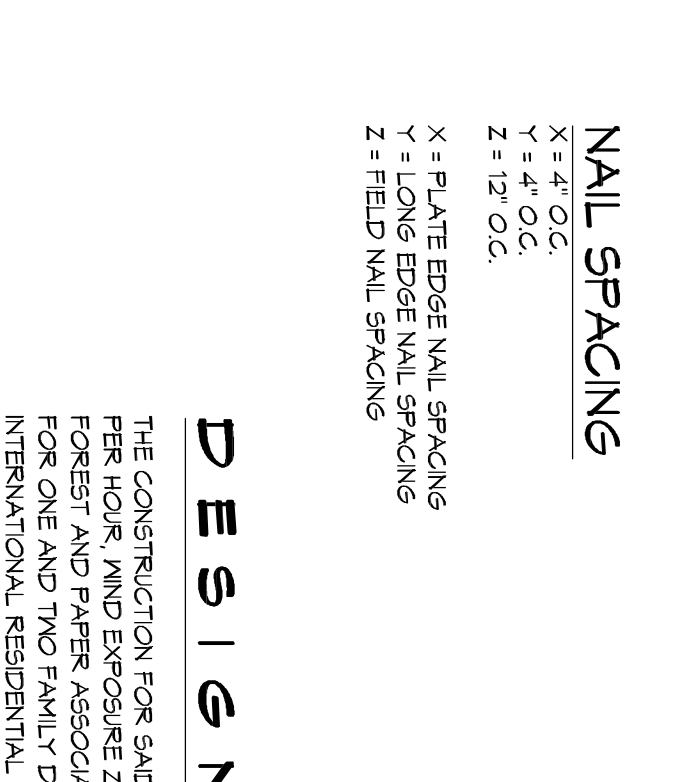
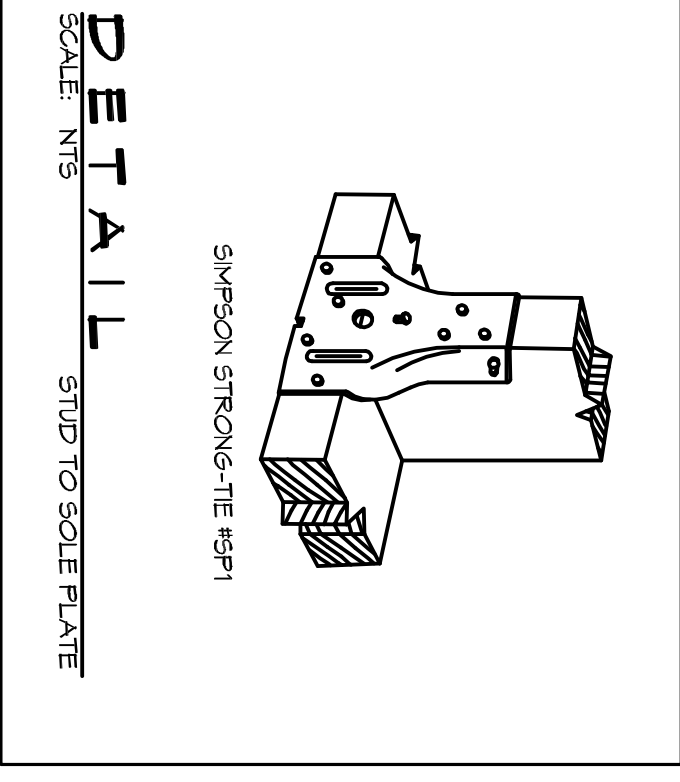
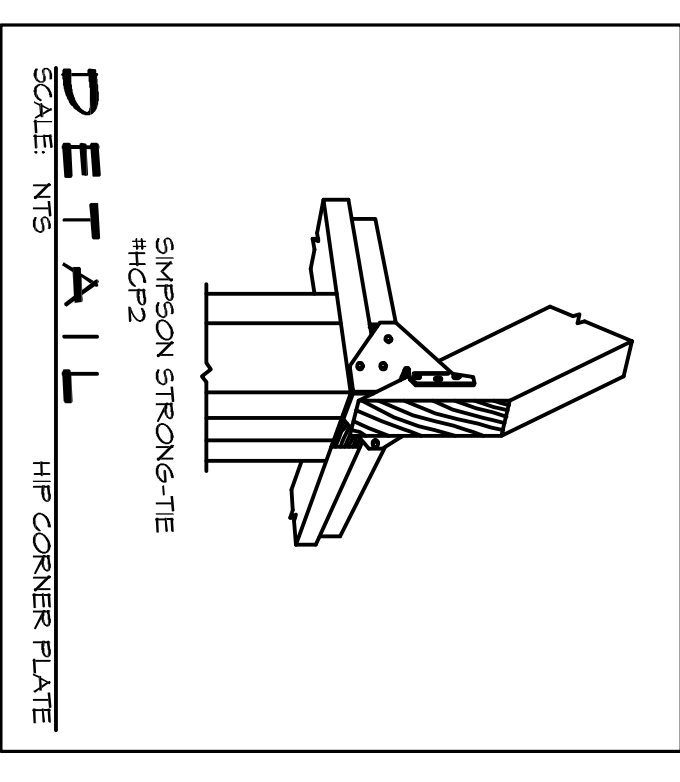
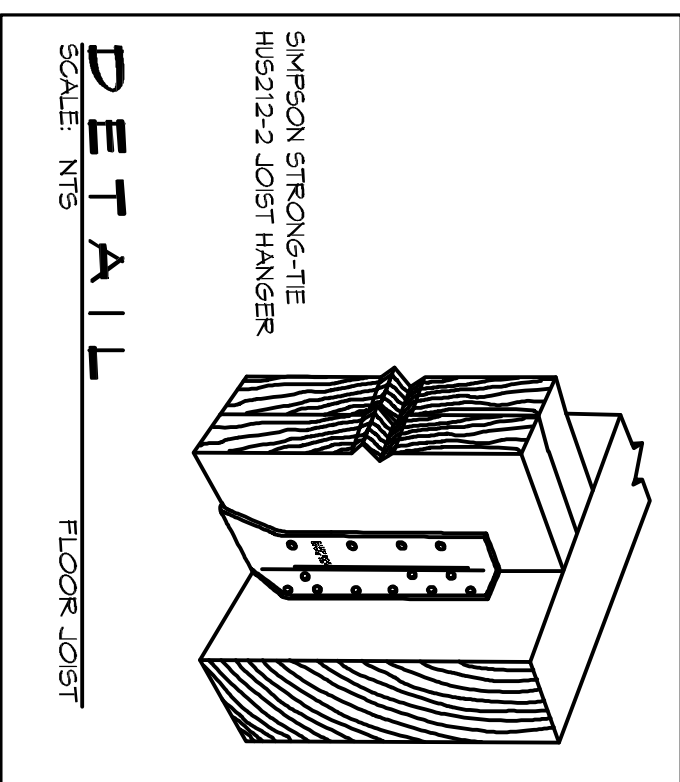
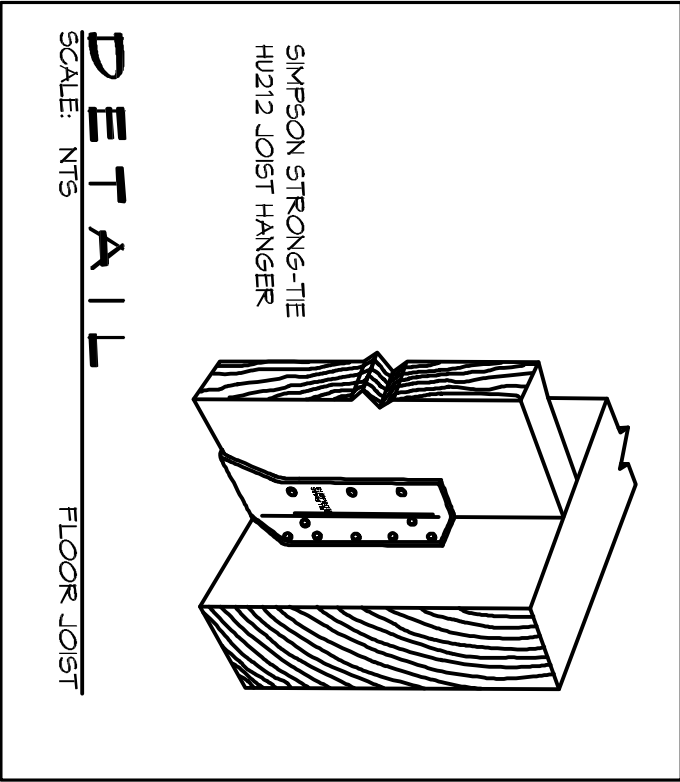
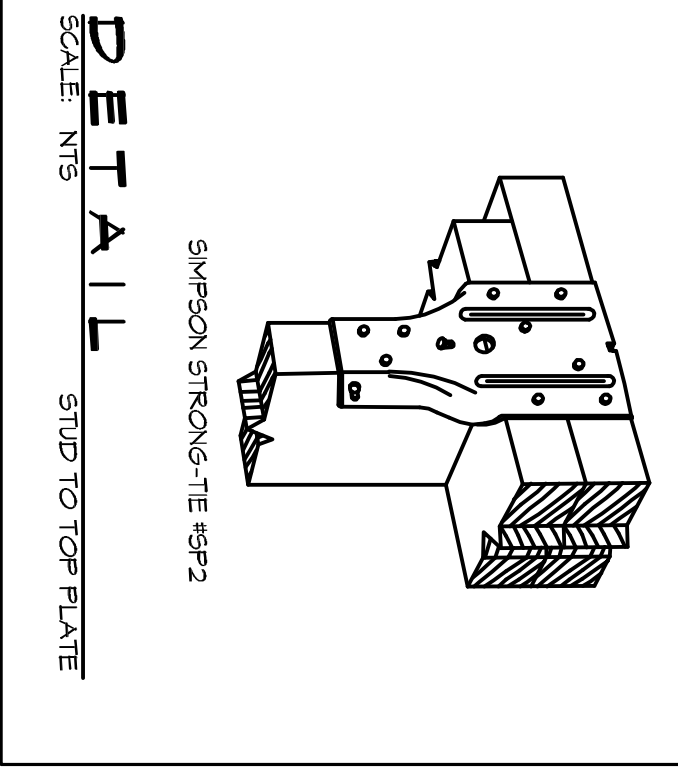
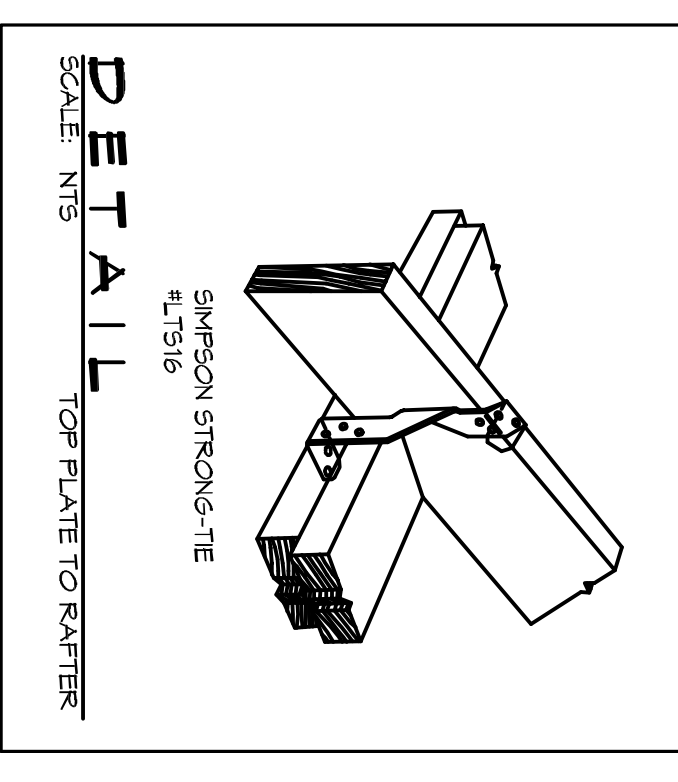
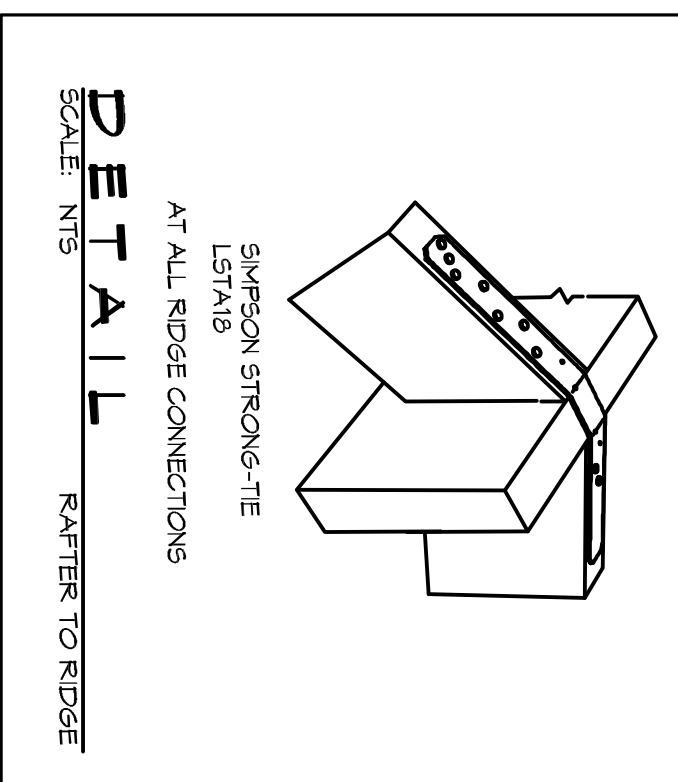
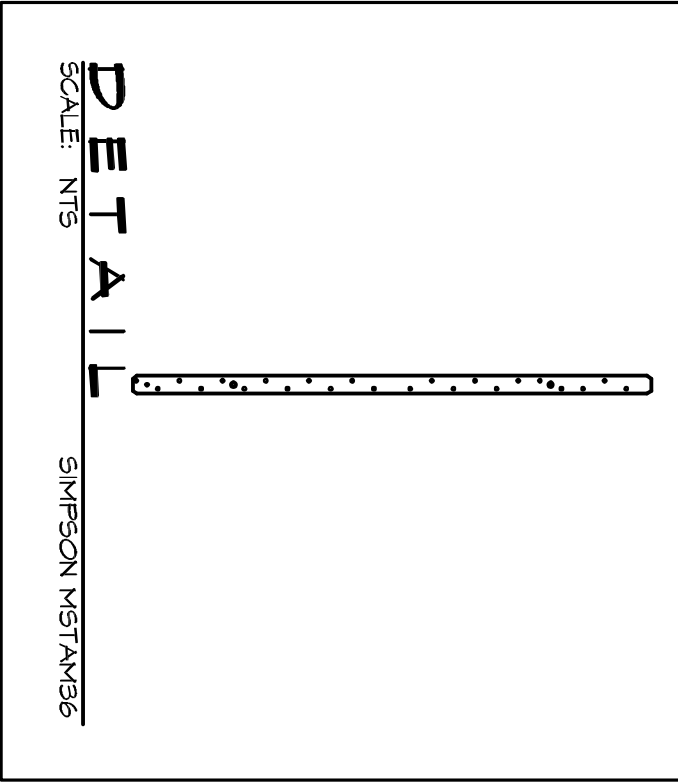
HEADER SIZE	SPAN	NUMBER FULL HEIGHT STUDS REQ. IN EA. END
(2) 2x4s	4'-1"	2
(2) 2x6s	5'-6"	3
(2) 2x8s	6'-1"	3
(2) 2x10s	6'-8"	3
(2) 2x12s	7'-1"	3
(3) 2x10s	7'-5"	3
(3) 2x12s	8'-1"	3
(4) 2x12s	8'-1"	3
(4) 2x12s	10'-0"	4

NOTE: 1) BLDG. WIDTH IS MEASURED PERPENDICULAR TO THE RIDGE FOR WIDTHS BETWEEN THOSE SHOWN SPANS ARE PERMITTED TO BE INTERPOLATED. 2) ALL HEADERS SHALL HAVE SOLID BLOCKING.

JACK STUD REQ - EXP "C" FOR EXT LOAD BEARING WALLS

HEADER SUPPORTING	HEADER SPAN (ft.)	HEADER WIDTH		
		3"	4.5"	5"
ROOF AND CEILING	2	1	1	1
	4	1	1	1
	6	2	2	2
	8	3	3	3
	10	3	3	3
	12	4	4	4
	14	4	4	4
	16	4	4	4
	18	4	4	4
	20	4	4	4
	22	4	4	4
	24	4	4	4
	26	4	4	4
	28	4	4	4
	30	4	4	4
	32	4	4	4
	34	4	4	4
	36	4	4	4

130 MPH WINDS-EXPOSURE "C" (TPF) EACH W/ 1/2" FLYWD. SPACER BETWEEN



WALL ASSEMBLY TO FOUNDATION

X = 4" O.C.
Y = 4" O.C.
Z = 12" O.C.
X = PLATE EDGE NAIL SPACING
Y = FLOOR EDGE NAIL SPACING
Z = FIELD NAIL SPACING

DESIGN CRITERIA:

THE CONSTRUCTION FOR SAND RESISTANCE WHERE BASIC WIND SPEED IS 130 MPH PER IBC AND EXPOSURE ZONE C, IS DESIGNED IN ACCORDANCE WITH AMERICAN INSTITUTE OF STEEL CONSTRUCTION, INC. (AISC) 360-10, AND THE INTERNATIONAL INTERNATIONAL RESIDENTIAL CODE (IRC) 2012 EDITION AS WELL AS THE

DAMMON ENGINEERING, INC.

Architects & Engineers
Chief Architect: Kevin J. Kinchen, NCARB
Chief Engineer: Brian Mistic, PE
554 Old Spanish Trail
Slidell, LA 70458
www.dammonengineering.com
Info@dammonengineering.com
PH: 985.649.5832
F: 985.641.5950

#	DESCRIPTION	DATE

95% SUBMITTAL NOT FOR CONSTRUCTION
REGISTERED ARCHITECT
STATE OF LOUISIANA
KINCHEN & ASSOCIATES
ARCHITECTS

CAMP VILLERE, LOUISIANA
JOB No: 2210 DATE: AUGUST 22, 2014
DRAWN BY: DD/K/LK CHECKED BY: CKD

SHEET TITLE: STRAPPING AND CONNECTION DETAILS
DRAWING NUMBER: 53
SHEET No: 4 of 12