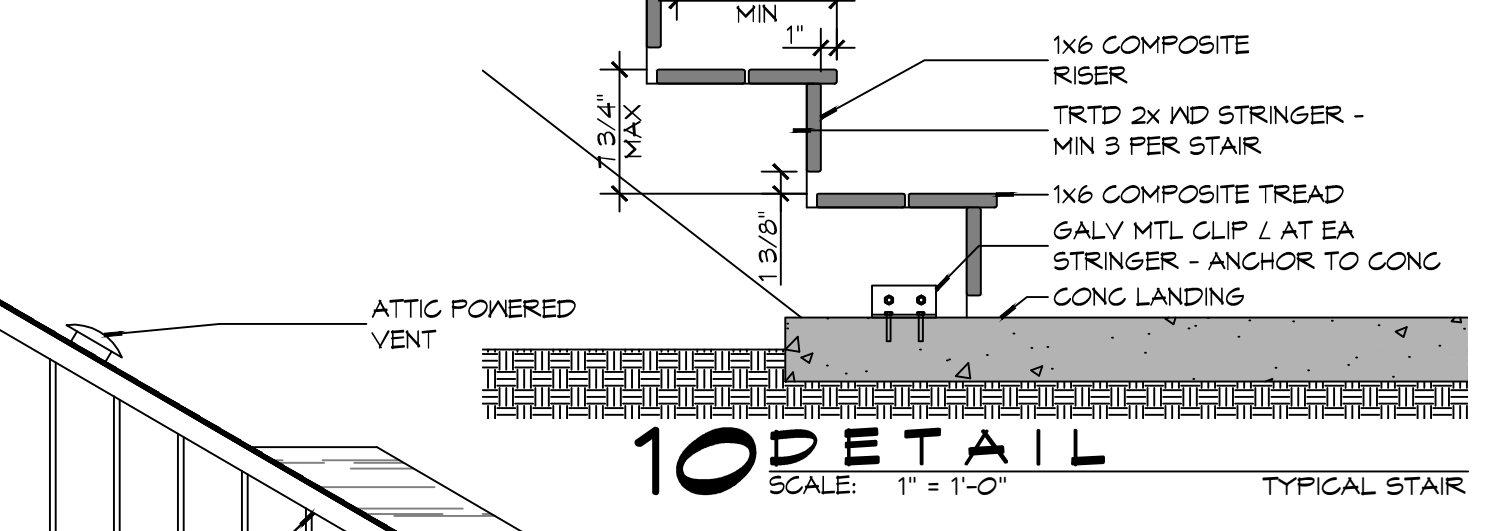
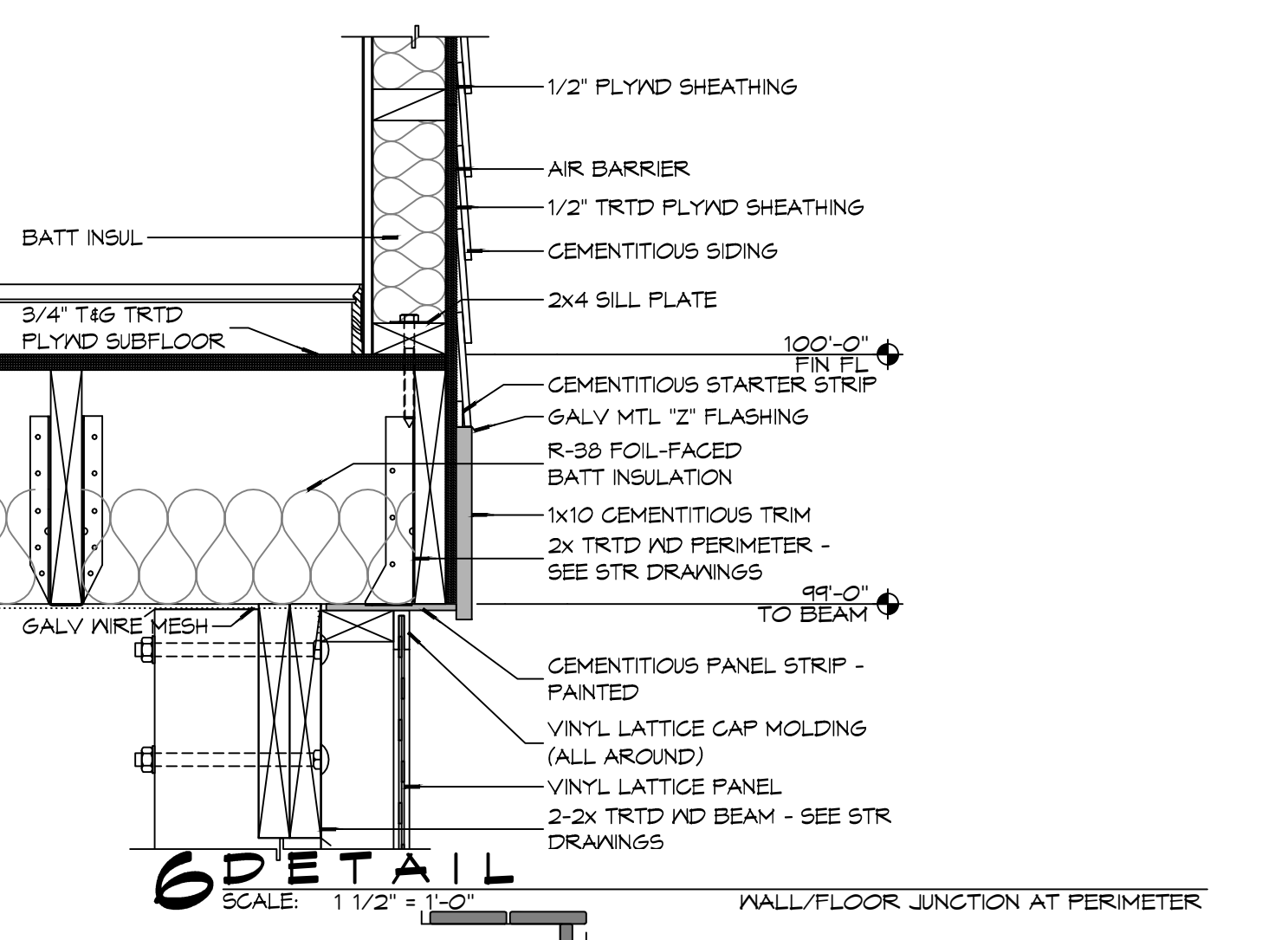
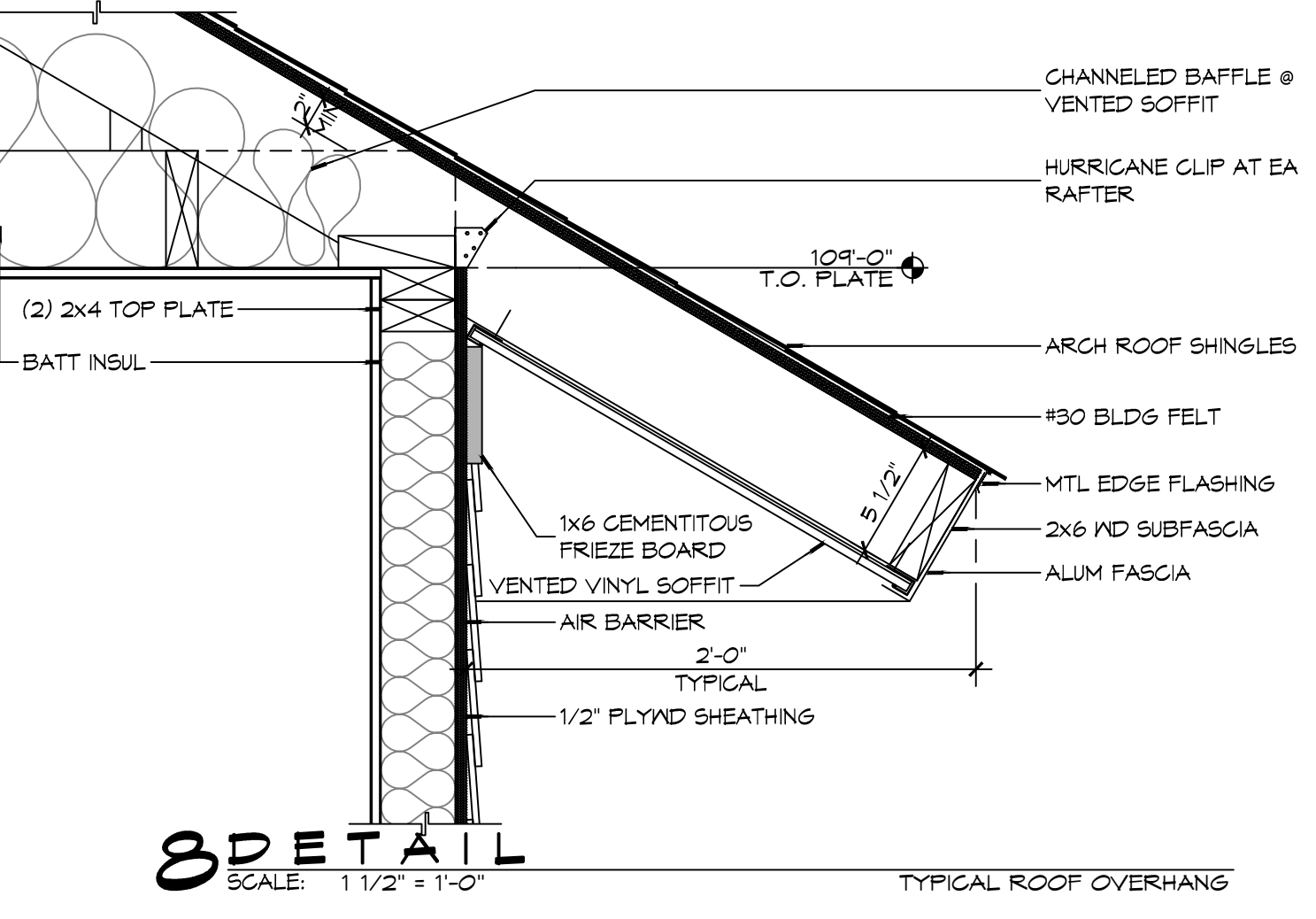


### GENERAL SHEET NOTES

- WHERE METAL 'Z' FLASHING OCCURS OVERLAP W/ AIR-BARRIER MEMBRANE OR TAPE WITH COMPATIBLE ADHESIVE.
- ALL METAL FLASHING SHALL BE G185 GALV, MIN 20 GA. DO NOT USE ALUM WHERE IT COMES INTO CONTACT WITH TRTD WD UNLESS A DURABLE BARRIER MATERIAL IS PROVIDED.
- ALL EXPOSED WD DECKING, TREADS, GUARDRAILS, ETC SHALL BE INSTALLED WITH BEST SIDE UP OR OUT.
- PROVIDE TRTD 6"x6" PYRAMID POST POINTS W/ COPPER CAPS AT ALL STAIR NEWELL POSTS.
- PROVIDE VENTED VINYL SOFFITS WITH A MINIMUM OF 815 SQ INCHES OF NET FREE AREA. PROVIDE CHANNLED BAFFLES @ ALL VENTED SOFFITS.



**DAMMON ENGINEERING, INC.**  
 LOUISIANA & MISSISSIPPI  
 Chief Engineer: Brian Misch, PE  
 554 Old Spanish Trail  
 Slidell, LA 70588  
 www.dammonengineering.com  
 info@dammonengineering.com  
 PH: 985.649.5832

#	DESCRIPTION	DATE
1	SINGLE POINT ROOF	4/11/2017
AS BUILTS 10/6/2017		

SEAL: \_\_\_\_\_

**CAMP VILLERE NEW HOME CONSTRUCTION**  
 LA 14-A-03T  
 JOB No: 2210 DATE: OCTOBER 6, 2014  
 DRAWN BY: KJK CHECKED BY: KJK

SHEET TITLE: SECTIONS AND DETAILS  
 DRAWING NUMBER: **A3**  
 SHEET No: 7 of 12