

NATL. BD. 146036  
 CERTIFIED BY RAYPAK, INC.  
 WESTLAKE VILLAGE  
 CALIFORNIA

MAX W P WATER 160 PSI  
 MIN RELIEF VALVE CAP 595 LBS/HR  
 HEATING SURFACE 58 SQ FT  
 MFR SERIAL NO. 9601146036

BTU/HR OUTPUT 595,320  
 BTU/HR INPUT 726,000  
 MIN INPUT RATE 0 BTU/HR  
 GAS NAT  
 MODEL NO. H3-0724  
 CATEGORY 1 BOILER



ANS Z21.13b-1994  
 LOW PRESSURE BOILER

ACCEPTED FOR USE  
 CITY OF NEW YORK  
 DEPARTMENT OF BUILDINGS  
 MEAF

# HOT WATER BOILER

FOR EITHER INDOOR OR OUTDOOR INSTALLATION  
 AS SHOWN BELOW

MIN. CLEARANCES FROM COMBUSTIBLE CONSTRUCTION		INDOOR ALCOVE		OUTDOOR	
RIGHT SIDE	6"	RIGHT SIDE	6"	LEFT SIDE	18"
LEFT SIDE	18"	BACK	12"	BACK	12"
TOP	36"				

TOP UNOBSTRUCTED  
 FOR SERVICING, PROVIDE AT LEAST 24"  
 OF UNOBSTRUCTED CLEARANCE IN FRONT OF UNIT

WHEN USED WITH INDUCED DRAFT VENT TERMINAL  
 NO "00" ELECTRICAL RATING WILL BE LESS THAN  
 20 AMPS, 120 VAC, 60 HZ

	NAT	LPG
MAX PERMISSIBLE GAS SUPPLY PRESSURE	14"W.C.	14"W.C.
MIN PERMISSIBLE GAS SUPPLY PRESSURE FOR PURPOSE OF INPUT ADJUSTMENT	7"W.C.	12"W.C.
MANIFOLD PRESSURE	4"W.C.	11"W.C.

ELECTRICAL RATING  
 120/240V 60 HZ LESS THAN 12 AMPERES

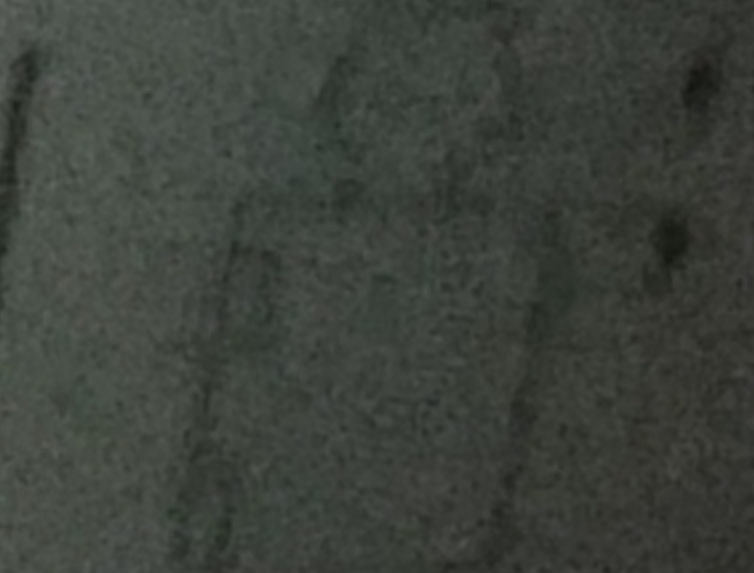
FOR INSTALLATION ON NON-COMBUSTIBLE FLOORING ONLY  
 \* FOR INSTALLATION ON COMBUSTIBLE FLOORING ONLY  
 WHEN INSTALLED ON SPECIAL BASE PART NUMBER

MODEL	PART NO.	MODEL	PART NO.
334	056197	624	056198
404	056198	724	056199
514	056199	824	056200

APPROPRIATE VENT KIT MUST BE INSTALLED  
 SEE INSTALLATION INSTRUCTIONS

OUTDOOR ONLY  
 STACKLESS VENT  
 TERMINAL KIT ASSY

INDUCED DRAFT VENT TERMINAL  
 KIT MUST BE CONNECTED  
 TO VENT



MODEL	OUTDOOR KIT#	NEEDLE VALVE
334	001101	001101
404	001102	001102
514	001103	001103
624	001104	001104
724	001105	001105
824	001106	001106

45251  
 /98 HSB