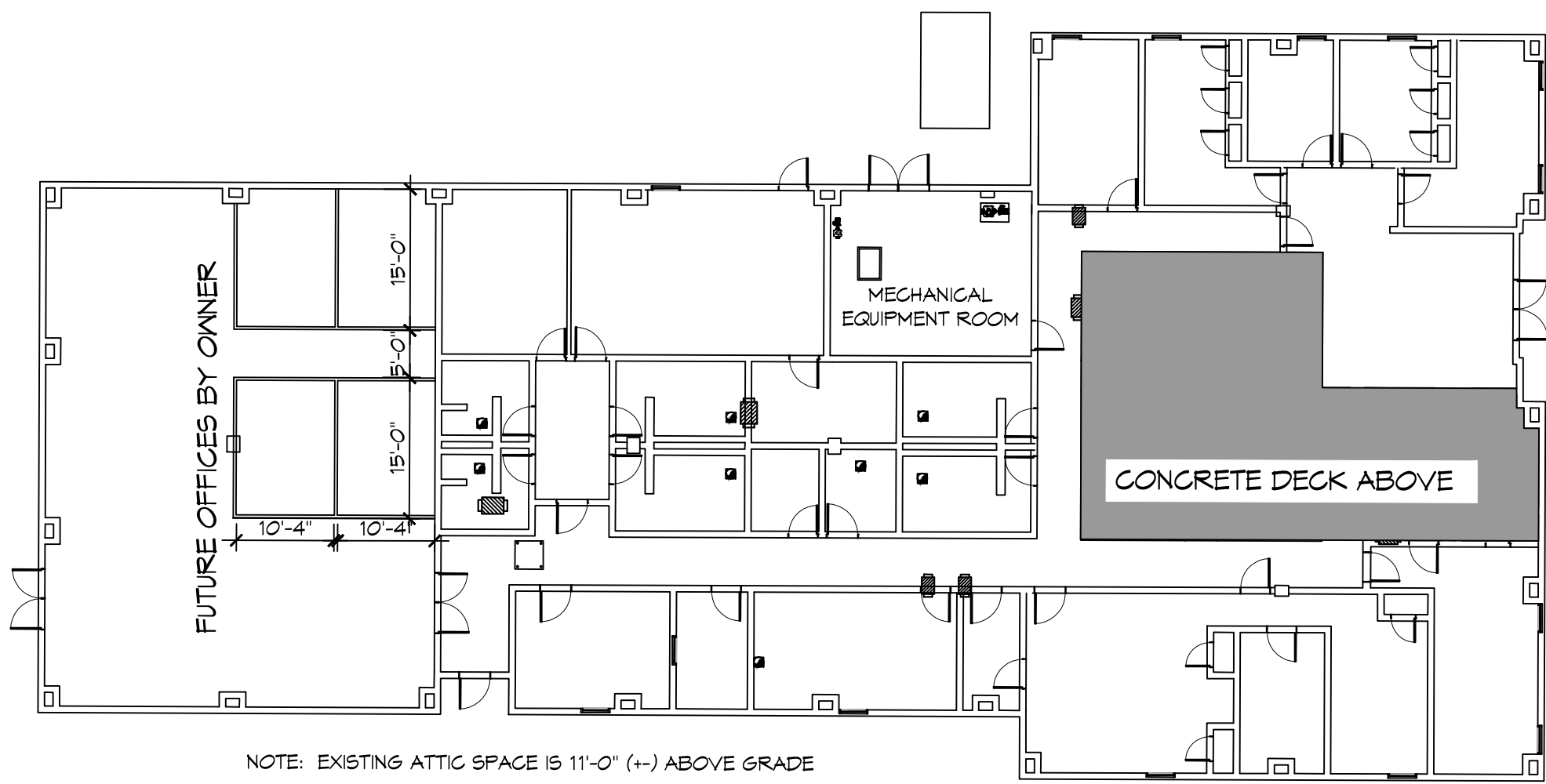


FILE NAME: A:\1-Government\3372 - Troop L State Police Replacement\Sheet\General\0102B.M102.dwg, Date Plotted: 7/25/2019 2:58:00 PM, Plotter: HP DesignJet 500, Plot Style: HP-GL/2



NOTE: EXISTING ATTIC SPACE IS 11'-0" (+/-) ABOVE GRADE

2 ATTIC PLAN
SCALE: N.T.S.

CONTRACTOR NOTE:

SCOPE OF WORK (SOW) INCLUDES BUT IS NOT LIMITED TO THE INSTALLATION OF A VARIABLE AIR VOLUME (VAV) SYSTEM AS SHOWN ON THESE PLANS. THIS INCLUDES THE PROCUREMENT AND INSTALLATION OF AN AIR HANDLING UNIT, VAV BOXES, DIFFUSERS, DUCTWORK, PIPING, CONTROLS AND APPURTANCES AS REQUIRED FOR A COMPLETE AND FUNCTIONAL SYSTEM IN ACCORDANCE WITH CURRENT CODES AND STANDARDS. REFERENCE SPECIFICATIONS FOR ADDITIONAL REQUIREMENTS.

- GENERAL HVAC NOTES**
- ALL MECHANICAL WORK SHALL BE COORDINATED WITH THE WORK OF OTHER TRADES.
 - VERIFY ROUTING OF ALL WORK ON SITE.
 - HVAC CONTRACTOR SHALL REPLACE ALL EQUIPMENT FILTERS AT THE TIME OF POSSESSION OF THE PROJECT BY THE OWNER, USING ONLY NEW FILTERS OF THE PROPER SIZE AND TYPE.
 - CONTRACTOR SHALL LEAVE THE HVAC SYSTEM IN PROPER WORKING ORDER AND SHALL GUARANTEE SAME FOR A PERIOD OF TWELVE (12) MONTHS FROM THE DATE OF SUBSTANTIAL COMPLETION.
 - WHERE MOUNTING HEIGHTS ARE NOT INDICATED OR DIMENSIONED, INSTALL MECHANICAL SERVICES AND OVERHEAD EQUIPMENT TO PROVIDE THE MAXIMUM HEADROOM POSSIBLE.
 - COORDINATE WITH ARCHITECT FOR FINISH AND COLOR OF MATERIALS EXPOSED TO VIEW (DIFFUSERS, GRILLES, ETC.)
 - ALL CHILLED WATER AND HOT WATER PIPING INSTALLED BY CONTRACTOR SHALL BE INSULATED WITH 2" THICK FIBERGLASS INSULATION WITH PVC JACKETING.
 - HIGH POINTS OF CHILLED WATER AND HOT WATER PIPING SHALL HAVE AUTOMATIC AIR VENTS AND MANUAL VACUUM BREAKERS INSTALLED. LOW POINTS SHALL BE CONFIGURED WITH LOW POINT DRAINS.
 - SUPPORT NEW DUCT WORK PER SMACNA STANDARD, SUPPORT PIPING PER MSS-58 AND MSS-64 STANDARDS.
 - REFERENCE SPECIFICATIONS FOR ADDITIONAL REQUIREMENT.

VAV BOX SCHEDULE

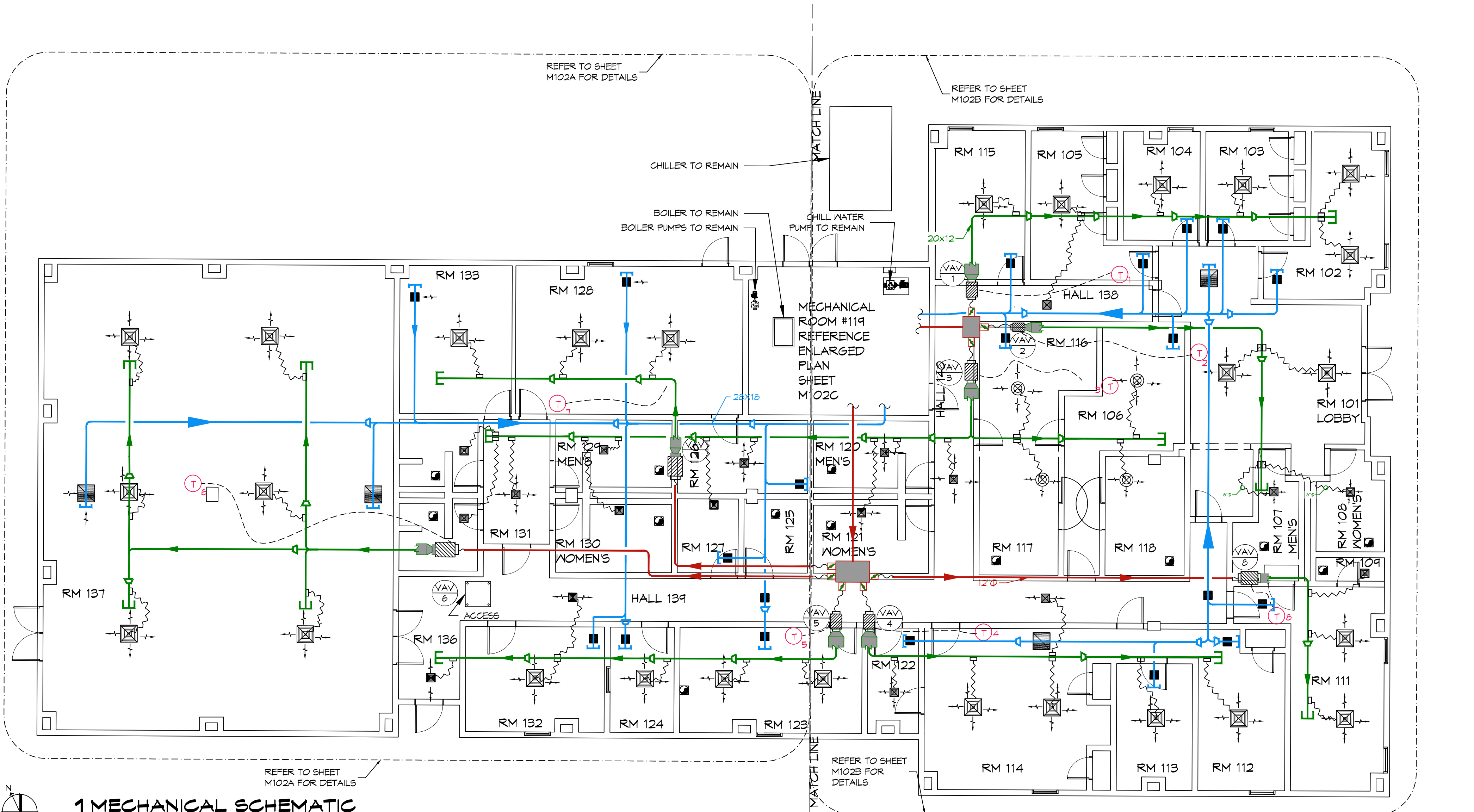
TAG	MAKE/MODEL	SIZE	MINIMUM FLOW CFM	DESIGN FLOW CFM	CONTROL
VAV-1	Johnson Control TSS-5000	10	600	1400	KMG BAC-8001 CONTROLLER /V STE-8001 SENSOR
VAV-2	Johnson Control TSS-5000	8	300	800	KMG BAC-8001 CONTROLLER /V STE-8001 SENSOR
VAV-3	Johnson Control TSS-5000	12	800	1850	KMG BAC-8001 CONTROLLER /V STE-8001 SENSOR
VAV-4	Johnson Control TSS-5000	10	600	1470	KMG BAC-8001 CONTROLLER /V STE-8001 SENSOR
VAV-5	Johnson Control TSS-5000	10	600	1380	KMG BAC-8001 CONTROLLER /V STE-8001 SENSOR
VAV-6	Johnson Control TSS-5000	14	1100	2730	KMG BAC-8001 CONTROLLER /V STE-8001 SENSOR
VAV-7	Johnson Control TSS-5000	8	300	880	KMG BAC-8001 CONTROLLER /V STE-8001 SENSOR
VAV-8	Johnson Control TSS-5000	6	200	500	KMG BAC-8001 CONTROLLER /V STE-8001 SENSOR

- CONFIGURE FOR PRESSURE INDEPENDENT VAV STAND ALONE OPERATION WITH HEAT/COOL SWITCH-OVER.
 - FURNISH WITH AIRFLOW SENSOR, FLANGED DISCHARGE AND 120/24 V-UL APPROVED TRANSFORMER.
- NOTE: NAMING A CERTAIN BRAND, MAKE OR MANUFACTURER IS TO DESIGNATE THE GENERAL STYLE, TYPE, CHARACTER AND QUALITY STANDARD OF THE PRODUCT DESIRED. SUBSTITUTION REQUESTS MUST BE SUBMITTED PRIOR TO BIDDING.

AIR HANDLING UNIT SCHEDULE

TAG	SERVICE	CONFIGURATION	Fan			Motor			CHW Cooling Coil				HW Heating Coil				Filters		CONTROL	MAKE / MODEL	REMARKS							
			AIRFLOW (CFM)	EXT. S.P. ("WC)	WHEEL	MAX. MOTOR H.P.	VAC	PH	HZ	TOTAL MBH	SENSIBLE MBH	ENT. FDW	ENT. FWB	MAX. DP ("WC)	GPM	ENT. (DEG F)	DP ("WC)	SENSIBLE MBH				ENT. FDB	DP ("WC)	GPM	ENT (DEG F)	MAX. DP ("WC)	MERV RATING	CPNFIGURATION
AHU 1	Troop L	Vertical Draw Thru Uplast	11,010	1.8	AF	10	460	3	60	450	326	82.0	67.0	0.8	75	44	10	560	68.8	0.6	36	180	5	8	Angled, Side Access	VFD w NEMA 1 Disconnect	York XT1-54X84	1, 2, 3, 4, 5, 6, 7

- Performance to be rated in accordance with AHRI standard 210/290 for ASHRAE standard design weather conditions in New Orleans, LA.
- Unit to be of double wall insulated construction with base rail and internal vibration isolation.
- Provide spare set of filters for installation after commissioning and final acceptance.
- Install unit in accordance with manufacturer's recommendations.
- Furnish with duct mounted smoke detector for fan shut down.
- Furnish with matching duct mounted SP sensor.
- Reference specifications for additional requirements.



1 MECHANICAL SCHEMATIC
SCALE: 1/8" = 1'-0"

LEGEND

- EXHAUST GRILLE AND ALL ASSOCIATED DUCT WORK TO REMAIN
- VAV # VAV/ZONE NUMBER TAG
- NEW VAV BOX
- RETURN AIR DIFFUSER (SIZED BELOW)
- SUPPLY AIR DIFFUSER (SIZED BELOW)
- TWO (2) WAY SUPPLY AIR GRILLE (SIZED BELOW)
- AIR FLOW DIRECTION
- SUPPLY AIR DUCT BEFORE VAV
- SUPPLY AIR DUCT AFTER VAV
- VAV VARIABLE DAMPER
- RETURN AIR DUCT
- FLEX DUCT
- ELECTRICAL WIRING
- THERMOSTAT, REF SPECIFICATIONS
- CAPPED OFF DUCT
- 1 = CFM FLOW RATE OR RETURN AIR
- A = REGISTER/GRILLE SIZE SEE BELOW
- 2 = ROUND DUCT SIZE FOR SUPPLY OR RETURN DUCT SIZE IN INCHES
- A = 24x24 SUPPLY DIFFUSER
- B = 12x12 SUPPLY DIFFUSER
- C = ROUND SUPPLY DIFFUSER
- D = NOT USED
- E = 24x24 RETURN GRILLE
- F = 12x12 RETURN GRILLE
- DUCT SMOKE DETECTOR, REF SPECIFICATIONS
- DUCT STATIC PRESSURE SENSOR, REF SPECIFICATIONS
- LIMIT OF NEW WORK

DAMMON ENGINEERING, INC.
LOUISIANA & MISSISSIPPI

Chief Engineer: Brian Mistich, PE
554 Old Spanish Trail
Slidell, LA 70458
www.dammonengineering.com
info@dammonengineering.com
PH: 985.649.5832

REVISIONS

#	DESCRIPTION	DATE

SEAL:

HVAC SYSTEM REPLACEMENT
PROJECT NO.: 01-107-06B-11, F.01008807

STATE POLICE TROOP L
HEADQUARTERS

2600 N. CAUSEWAY BLVD., HANCOCKVILLE, LA 70411
STATE ID: 500214 SITE CODE: 1-52-004
JOB No: 2372 DATE: 7/25/2019
DRAWN BY: RLD CHECKED BY: DD

SHEET TITLE:
MECHANICAL SCHEMATIC

DRAWING NUMBER:
M102

SHEET No: 4 of 4