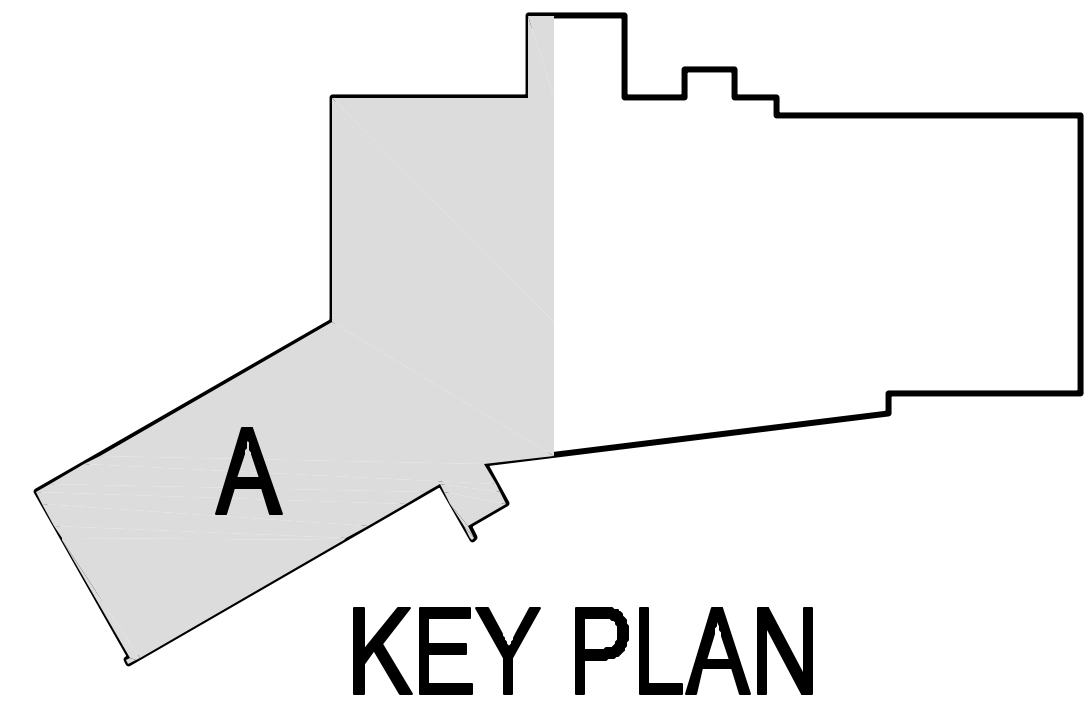


NORTH  
1 1ST FLOOR DIMENSION PLAN "A"  
A2.11A 1/8"=1'-0"

- GENERAL NOTES:
1. REFER TO SHEET A3.09 FOR PARTITION TYPE DEFINITIONS.
  2. REFER TO SHEET A2.01& A2.02 FOR DOOR NUMBERS.
  3. REFER TO SHEET A5.03 FOR TYPICAL TOILET ACCESSORIES AND DIMENSIONS.
  4. ALL DIMENSIONS ARE TO FINISH FACE OF BASE PARTITION UNLESS NOTED OTHERWISE.
  5. G.C. TO COORDINATE & PROVIDE 20 GA. GALV. SHEET METAL BLOCKING OR FIRE / TERMITE TREATED WOOD BLOCKING AS REQUIRED AT ALL ACCESSORIES, CASEWORK, & OWNER PROVIDED EQUIPMENT, TO BE INSTALLED BY CONTRACTOR.
  6. REFER TO LIFE SAFETY PLAN A1.01 & A1.02 FOR HOURLY RATED WALL AND SMOKE PARTITION LOCATIONS. NOTIFY ARCHITECT OF ANY DISCREPANCIES WITHIN ENLARGED PLAN PARTITION CALL OUTS FOR CLARIFICATION.
  7. SEE SHEET A3.01& A3.02 FOR FINISH FLOOR SCHEDULES.



RICHARD C. LAMBERT  
CONSULTANTS, L.L.C.  
527 N. Canaway Blvd.  
Mandeville, LA 70448  
985.723.4446  
Fax: 985.723.4467  
#1 Poplar St., Ste. 1400 #10  
New Orleans, LA 70139  
504.833.7346

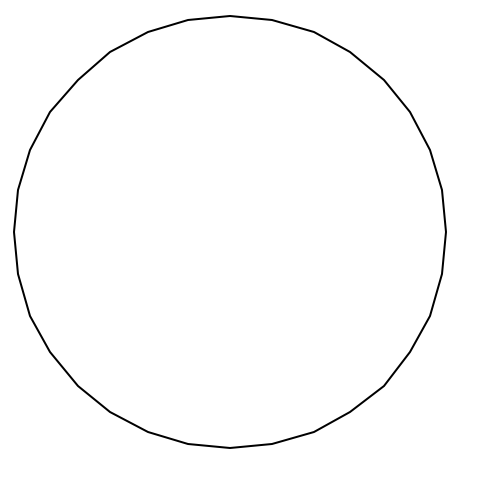
The drawing and design is the exclusive property of Richard C. Lambert Consultants, L.L.C. and may not be reproduced or used without authorization and written permission. © 2007

RCLC Project Number: 0687  
Date Issued: 05/15/07  
Drawn By: VFA & JMS  
Checked By: RLE

Revisions:


**ST. TAMMANY PARISH SHERIFF'S OFFICE**  
BROWNSWITCH ROAD  
SLIDELL, LOUISIANA

CONSTRUCTION DOCUMENTS



1ST FLOOR DIMENSION PLAN  
Sheet Number:

A2.11A

Copyright 2007