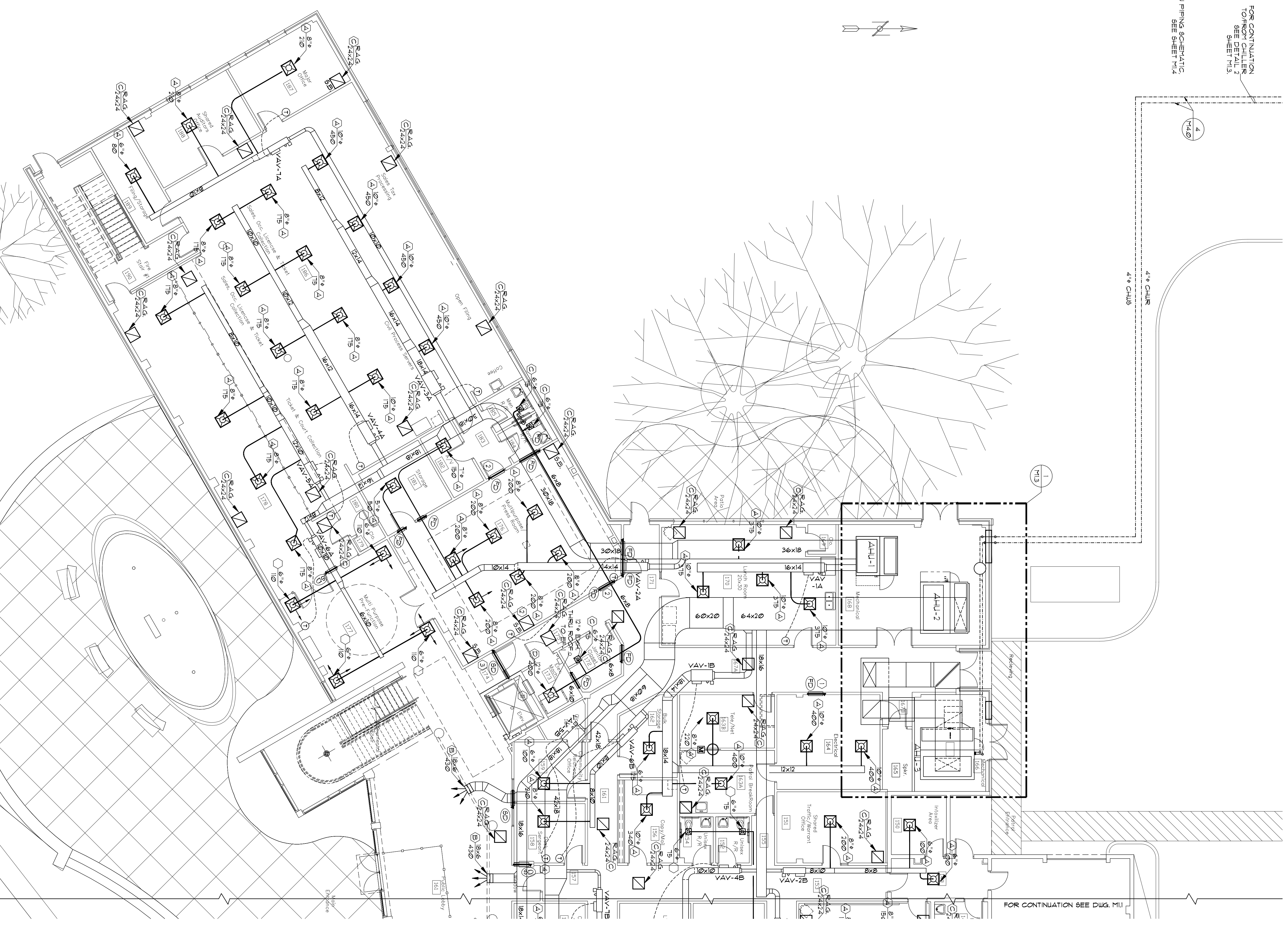


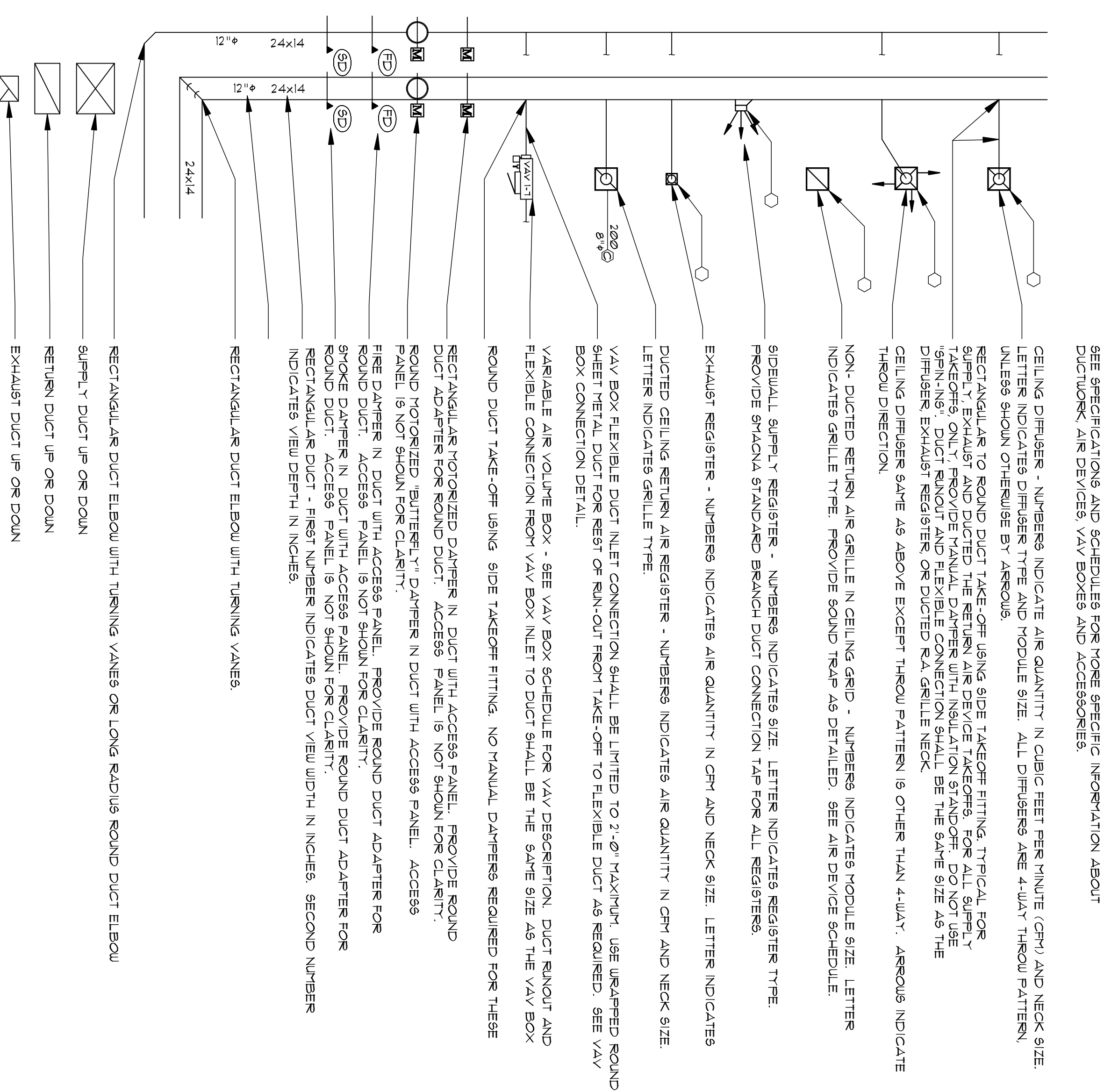
FOR CONTINUATION  
TO ROOM CHILLER  
SEE DETAIL 2  
SHEET M1.2

1 CHU PENDING SCHEMATIC  
SEE SHEET M1.4



1  
1/8" = 1'-0"  
1ST FLOOR  
HVAC PLAN

**AIR DISTRIBUTION SYMBOLS**



- SPECIFIC NOTES:**
1. RETURN AIR GRILLE ROOM 164 TO BE LOCATED ABOVE FINISHED CEILING ELEVATION IN ADJACENT CORRIDOR ROOM 161A1 GRILLE TO BE 24" W x 16" H.
  2. RETURN AIR GRILLE INSTALLED IN FIRE RATED WALL ABOVE CEILING OF ROOM 110 TO BE 60" W x 24" H. PROVIDE GRILLES WITH FINE DUST FILTERS TO MAINTAIN ROOMS AS INDICATED ON ARCHITECTURAL FLOOR SHEETS.
  3. RETURN AIR GRILLE INSTALLED IN SPOKE PARTITION BOUNDARY WALL ABOVE CEILING IN CORRIDOR 114 TO BE 60" W x 24" H. PROVIDE GRILLE WITH FINE DUST FILTERS TO MAINTAIN ROOMS AS INDICATED ON ARCHITECTURAL FLOOR SHEETS.
  4. CONTROLLER FOR VAV-98 TO BE LOCATED IN ROOM 98. TEMPERATURE SENSORS SHALL BE LOCATED IN ROOM 98 (BELOW AND FLOOR WALKWAY). VAV-98 TO COMMUNICATE WITH VAV-9C FOR SYNCHRONIZATION OF CONTROL.
  5. THERMOSTAT FOR ROOM 198 TO CONTROL VAV-105, VAV-106 TO COMMUNICATE WITH VAV-11C FOR SYNCHRONIZATION OF CONTROL.
  6. RETURN AIR OPENINGS WITHIN SPOKE PARTITION BOUNDARIES TO BE PROVIDED WITH SPOKE PARTITION DAMPERS. SEE ARCHITECTURAL FLOOR SHEETS FOR LOCATION OF SPOKE PARTITIONS. PROVIDE DUCTWORK SIZED TO ACCOMMODATE 900 CFM @ 0.071 W/C. FRICTION LOSS 0.05 "/100'.
  7. CONTRACTOR TO PROVIDE HORIZONTAL FRODO ISOLATION DAMPER, BAROMETRIC RELIEF DAMPER AND ONE HOUR FIRE DAMPER IN FLEATH GRADE COLLAR OF ISOLATION DAMPER SHALL BE ACTIVATED BY FRODO OPEN TO FURNISH NOISE DUCT TO PROVIDE 50% SPACE.
  8. THERMOSTAT FOR ROOM 161 (CONTROL 9 VAV-98 AND 9) LOCATED IN ROOM 98. VAV-98 TO COMMUNICATE WITH VAV-102 FOR SYNCHRONIZATION OF CONTROL.
  9. THERMOSTAT FOR ROOM 129 CONTROL 9 VAV-105 TO COMMUNICATE WITH VAV-11C FOR SYNCHRONIZATION OF CONTROL.
  10. RETURN AIR GRILLE INSTALLED IN SPOKE PARTITION BOUNDARY WALL ABOVE CEILING IN COORDINATE 230 TO BE 36" W x 16" H. PROVIDE GRILLE WITH SPOKE DAMPER TO MAINTAIN PARTITION RATING AS INDICATED ON ARCHITECTURAL FLOOR SHEETS.
  11. CONTRACTOR TO PROVIDE 36"x24" PRESSURE EQUALIZATION GRILLE BETWEEN ROOM 113 AND ELEVATOR SHAFT. GRILLE SHALL INCLUDE WALL FRODO AND SHALL BE FRODO MODEL 600.
  12. CONTRACTOR TO PROVIDE 230W LINE LINE DUCT HEATER WITH INDEPENDENT GRADE THERMOSTAT IN ROOM 222.
  13. PROVIDE JUMPOVER DUCT BETWEEN RA-13 & JUMPOVER DUCT SHALL INCLUDE FIRE AND MOTORIZED DAMPERS AS INDICATED.

**RCL CONSULTANTS, LLC**  
 Consulting Engineers  
 Architectural  
 Engineering  
 Construction Management  
 Mechanical

**RICHARD C. LAMBERT**  
 CONSULTANT, LLC  
 621 N. Gateway Blvd.  
 Metairie, LA 70002  
 Tel: 833-572-4477  
 Fax: 833-572-4477  
 #10000000  
 Web: www.rclconsultants.com  
 Lic: 0000000000

This drawing was prepared by the undersigned  
 Richard C. Lambert, Consulting Engineer, License  
 No. 0000000000, State of Louisiana, on 05/15/07.  
 I am a duly licensed professional engineer, P.E. 0000000000

**ST. TAMMANY PARISH SHERIFF'S OFFICE**  
 BROWNSWITCH ROAD  
 SLIDELL, LOUISIANA

**CONSTRUCTION DOCUMENTS**

Project Number:	0887
Date Issued:	05/15/07
Drawn By:	EDA
Checked By:	EDA
Revisors:	

**Engineering Design Associates, LLC**  
 Consulting Engineers  
 3250 Maplewood Drive, Suite 100 Metairie, Louisiana 70002  
 504.834.9389 • 504.834.9387 (fax) • ead@engdesignassociates.com

Copyright © 2007  
 EDA Project #173