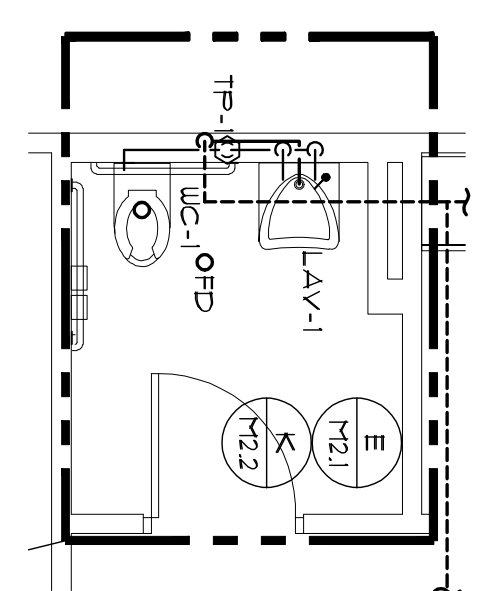
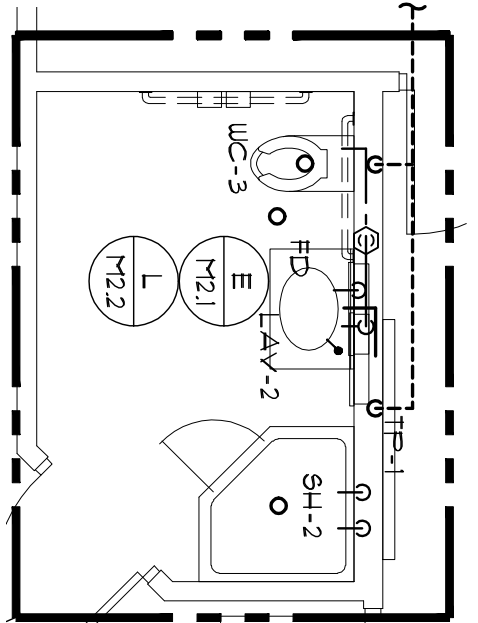


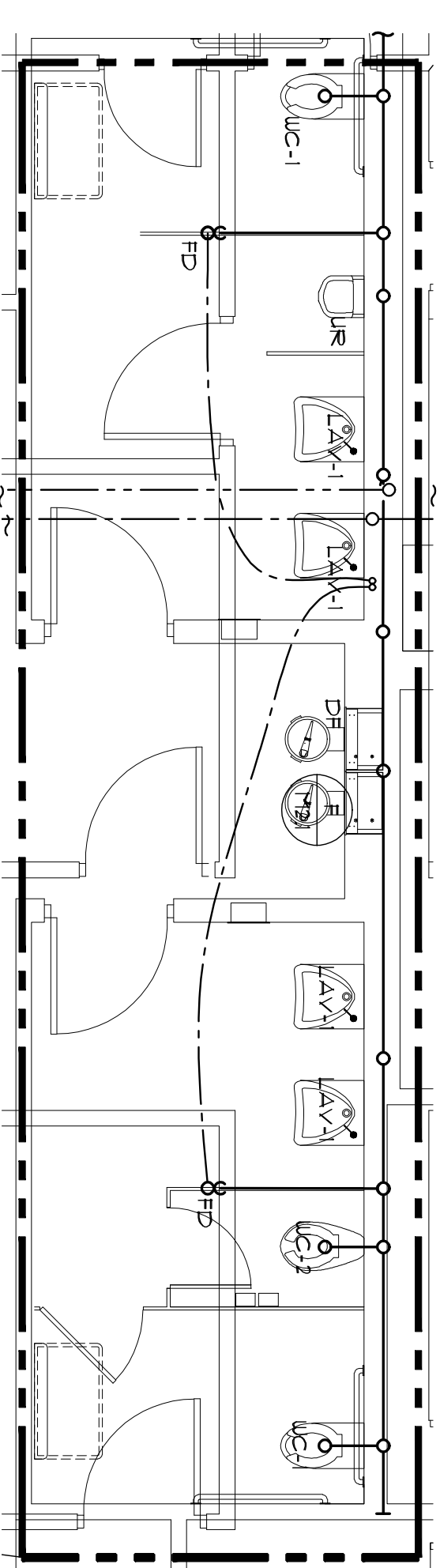
218 PUBLIC WOMEN'S R/R  
220 PUBLIC MEN'S R/R  
2  
1/4" = 1'-0"



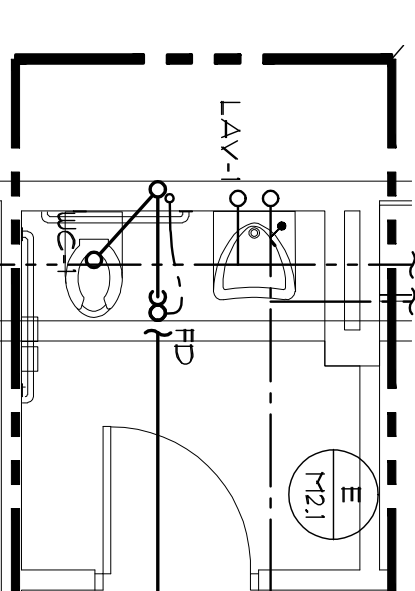
209 ADMIN. R/R  
3  
1/4" = 1'-0"



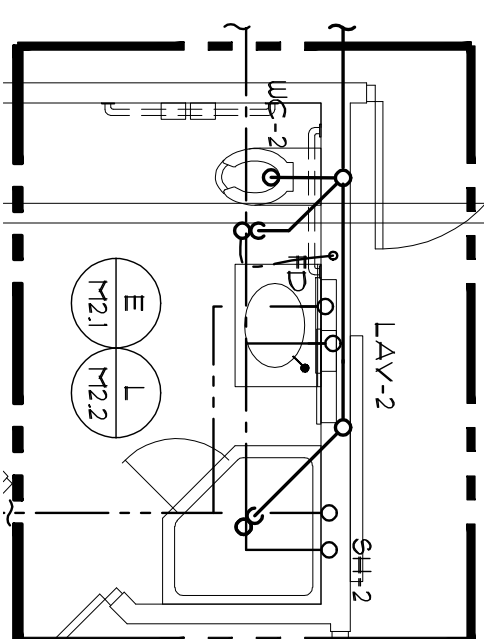
202 SHERIFF R/R  
4  
1/4" = 1'-0"



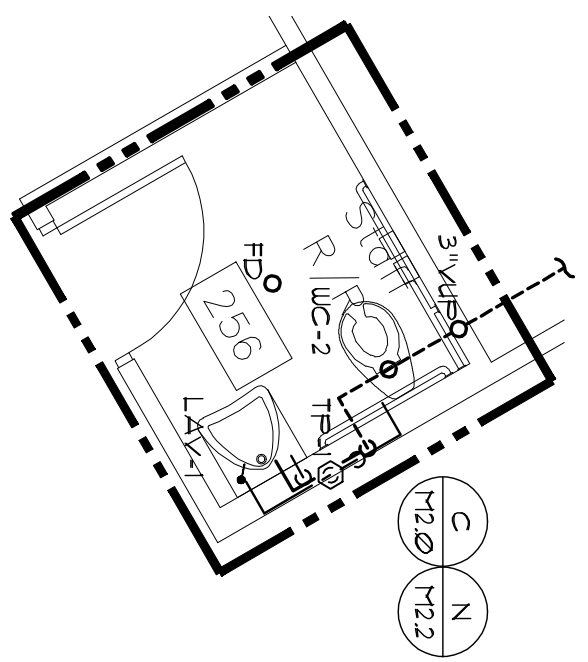
2A ABOVE 1ST FLOOR  
2A  
1/4" = 1'-0"



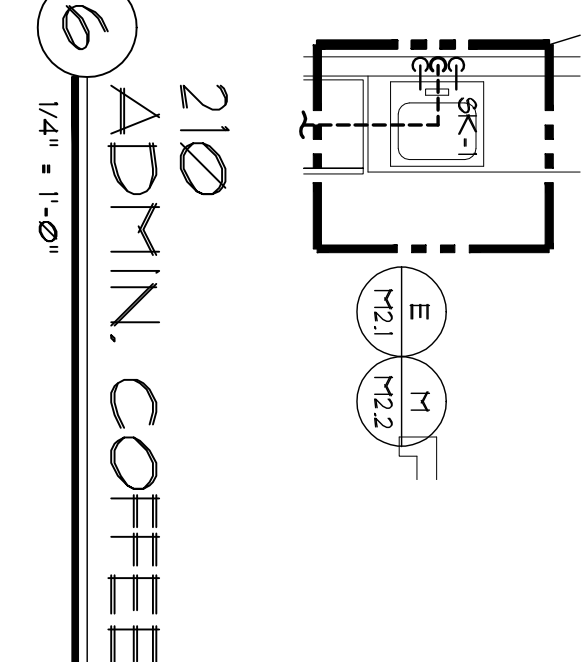
3A ABOVE 1ST FLOOR  
3A  
1/4" = 1'-0"



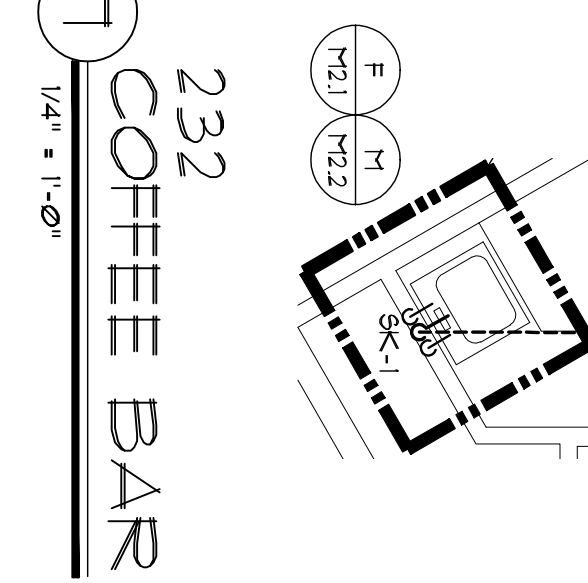
4A ABOVE 1ST FLOOR  
4A  
1/4" = 1'-0"



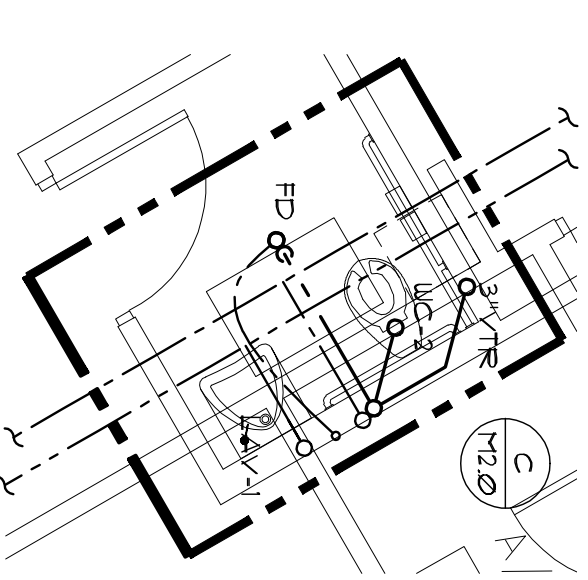
256 STAFF R/R  
5  
1/4" = 1'-0"



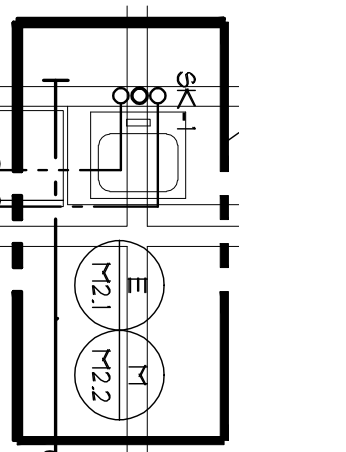
210 ADMIN. COFFEE  
6  
1/4" = 1'-0"



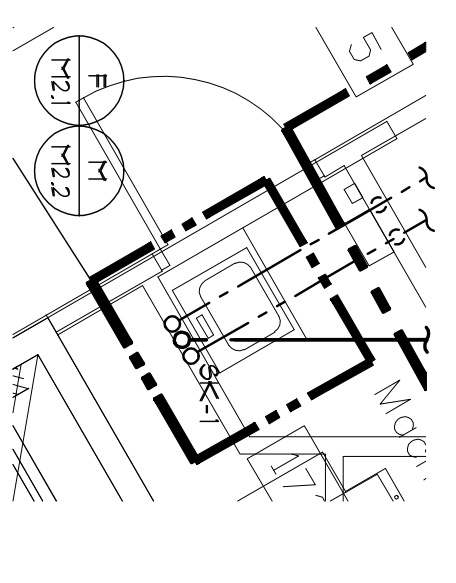
232 COFFEE BAR  
7  
1/4" = 1'-0"



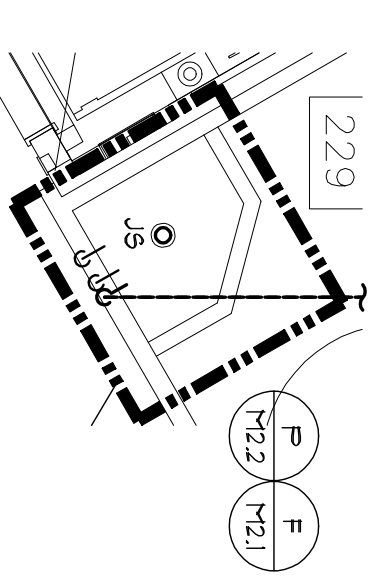
5A ABOVE 1ST FLOOR  
5A  
1/4" = 1'-0"



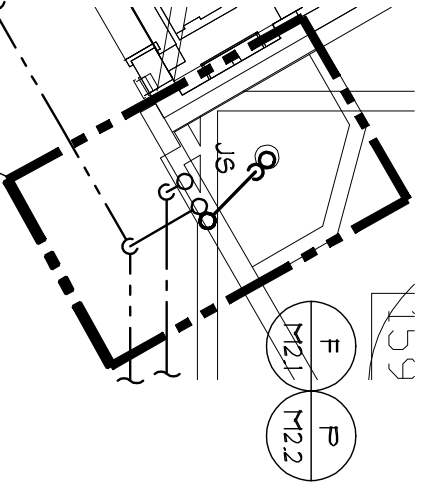
6A ABOVE 1ST FLOOR  
6A  
1/4" = 1'-0"



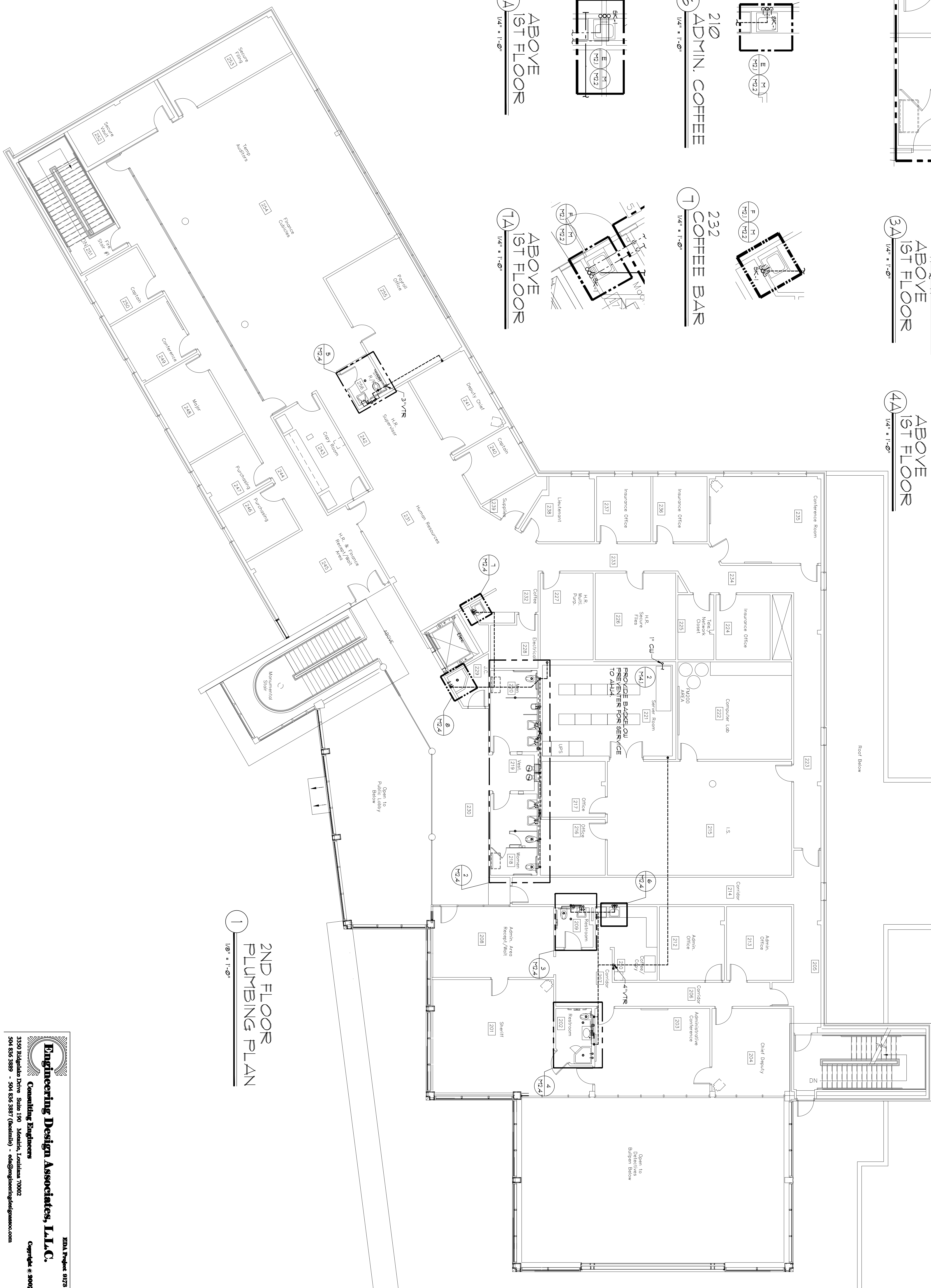
7A ABOVE 1ST FLOOR  
7A  
1/4" = 1'-0"



229 JANITOR'S CLOSET  
8  
1/4" = 1'-0"



8A ABOVE 1ST FLOOR  
8A  
1/4" = 1'-0"



2ND FLOOR  
PLUMBING PLAN  
1  
1/8" = 1'-0"

**RCL**  
CONSULTING, LLC  
Professional Services  
Architectural  
Engineering  
Construction  
Management  
Richard C. Lambert  
Consulting, LLC  
821 N. Gateway Blvd.  
Metairie, LA 70002  
Phone: 504-885-7247  
Fax: 504-885-7248  
#1 Project: St. Tammany Parish Sheriff's Office  
New Orleans, Louisiana  
New Orleans, Louisiana  
504-885-7248

This drawing and design is the exclusive property of Richard C. Lambert Consulting, LLC and shall remain confidential and not be reproduced without written permission. © 2007

RCLC  
Project Number: 0887  
Date Issued: 05/15/07  
Drawn By: EDA  
Checked By: EDA  
Revisors:

**ST. TAMMANY PARISH SHERIFF'S OFFICE**  
BROWNSWITCH ROAD  
SLIDELL, LOUISIANA

CONSTRUCTION DOCUMENTS  
PLUMBING PLAN  
2ND FLOOR  
Sheet Number: M2.4

**Engineering Design Associates, L.L.C.**  
Consulting Engineers  
3250 Tulane Drive, Suite 100 Metairie, Louisiana 70002  
504.835.9889 - 504.835.9897 (cellular) - ead@engineeringdesign.com  
EDNA Project 8173  
Copyright © 2007