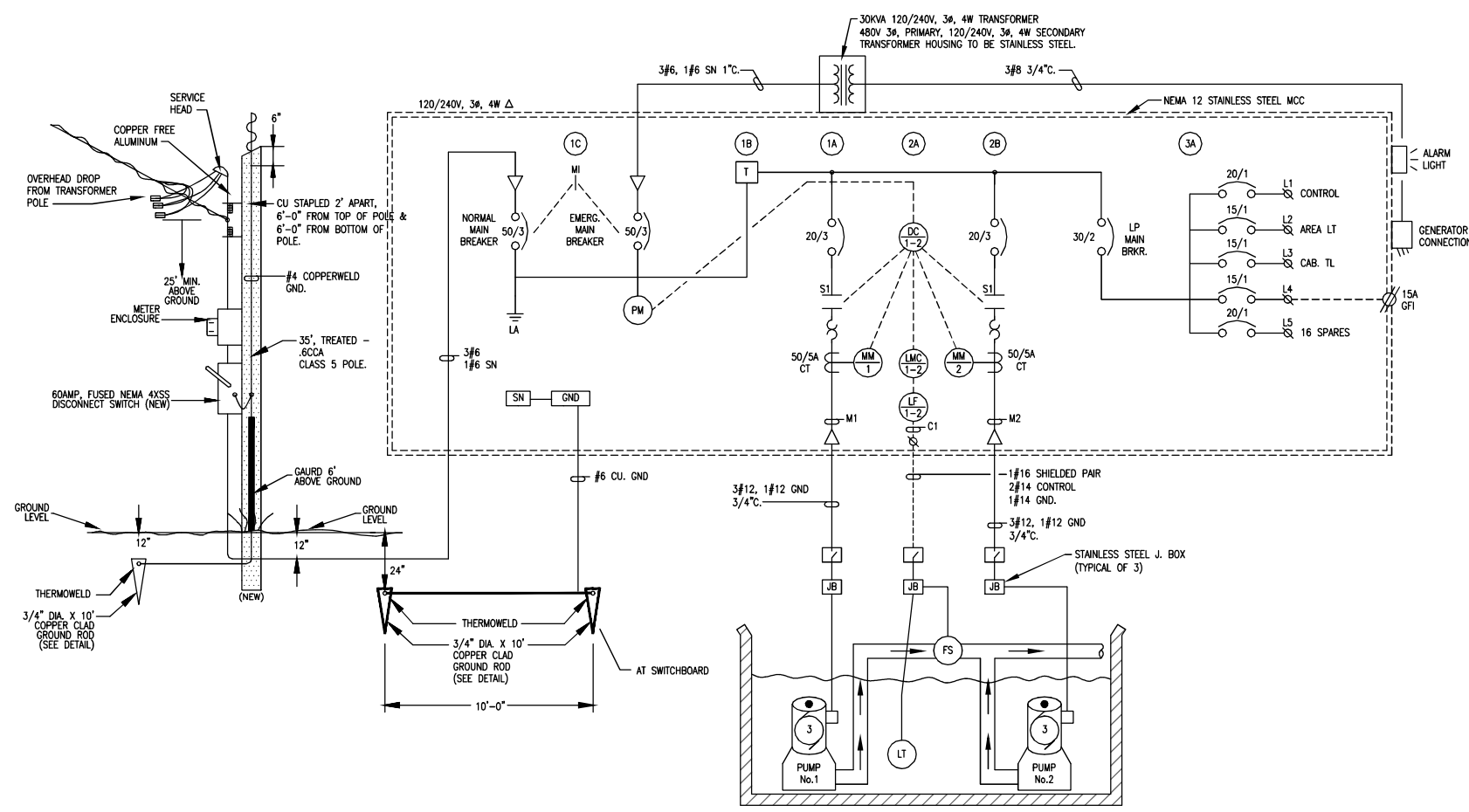


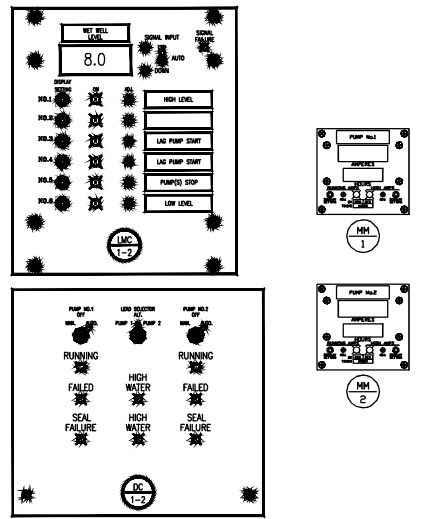
DESIGNED	JHM	CHECKED	JHM	DATE	MARCH 20, 2016
DETAILS	JHM	REVISION	DESCRIPTION	BY	



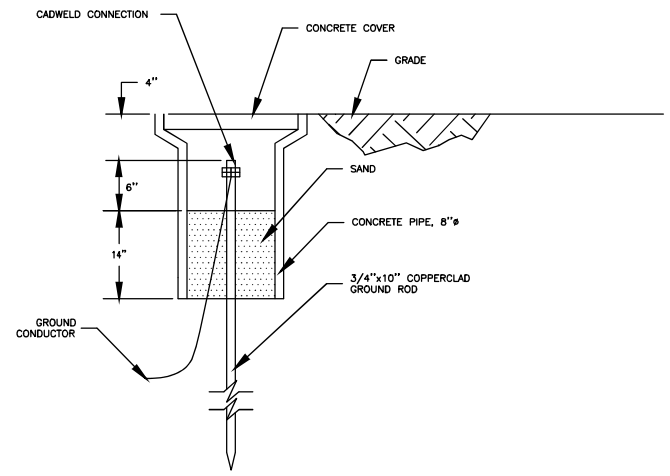
**1**  
E-2.1  
**LIFT STATION ONE - LINE POWER DIAGRAM AND  
PROCESS AND INSTRUMENTATION DIAGRAM (P&ID)**  
N.T.S.

**LEGEND (THIS SHEET)**

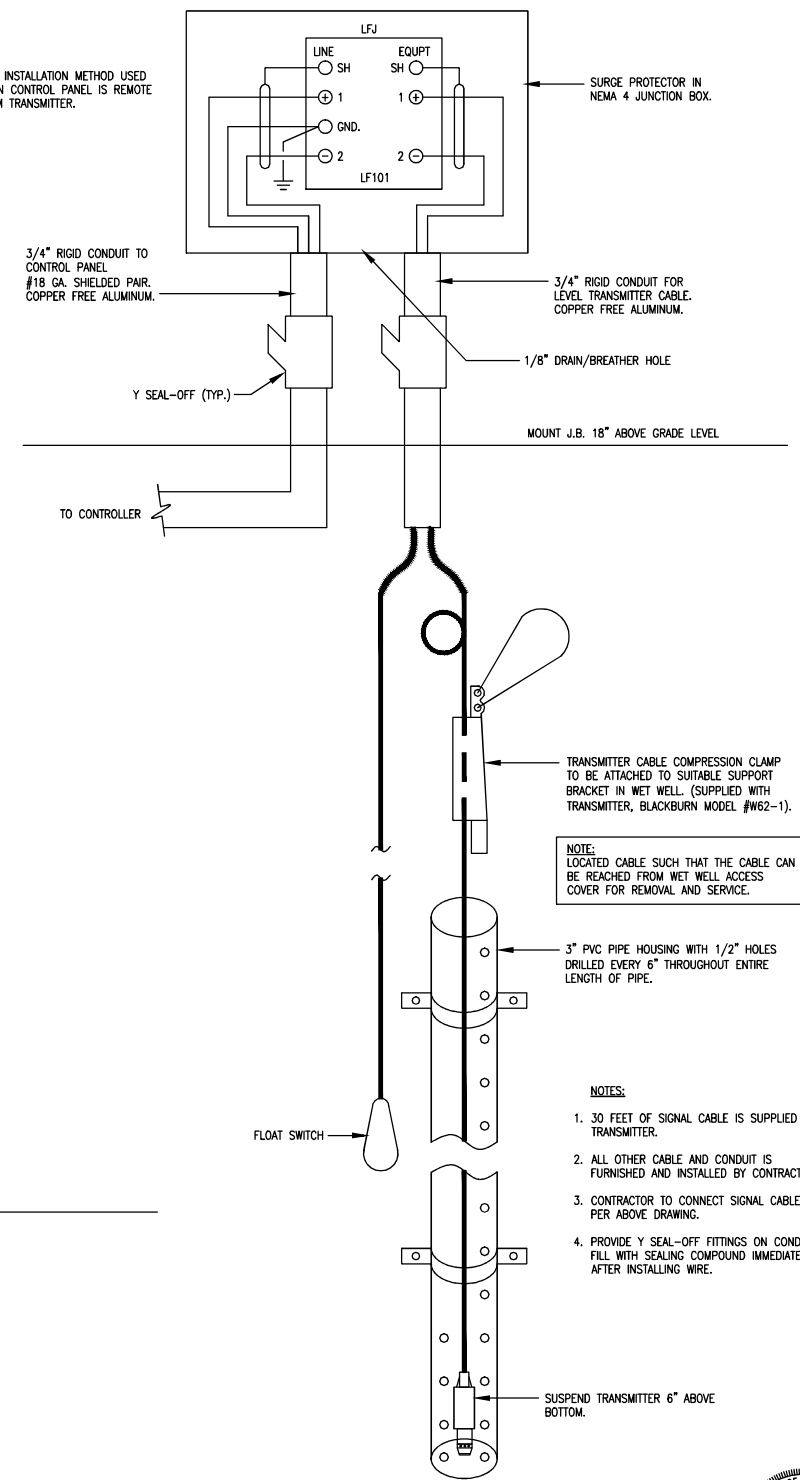
PM	ELECTRICAL POWER SERVICE MONITOR -	SEE COMPONENT SPECIFICATIONS
LMC 1-2	LEVEL METER CONTROLLER -	SEE COMPONENT SPECIFICATIONS
DC 1-2	DUPLEX CONTROLLER -	SEE COMPONENT SPECIFICATIONS
AL	ALARM LIGHT -	SEE COMPONENT SPECIFICATIONS
LT	WET WELL LEVEL TRANSMITTERS -	SEE COMPONENT SPECIFICATIONS
CT	CURRENT TRANSFORMER -	SEE COMPONENT SPECIFICATIONS
MM	MOTOR MONITOR -	SEE COMPONENT SPECIFICATIONS
LF	LINE FUSE -	SEE COMPONENT SPECIFICATIONS
FS	FLOAT SWITCH -	SEE COMPONENT SPECIFICATIONS
LA	LIGHTNING ARRESTOR -	SEE COMPONENT SPECIFICATIONS
LI	WET WELL LEVEL INDICATOR -	SEE COMPONENT SPECIFICATIONS
R	CONTROL RELAY -	SEE COMPONENT SPECIFICATIONS
DR	DUPLEX RECEPTACLE -	SEE COMPONENT SPECIFICATIONS
MS	MAIN SERVICE SWITCH -	SEE COMPONENT SPECIFICATIONS



**2**  
E-2.1  
**LIFT STATION CONTROL**  
N.T.S.

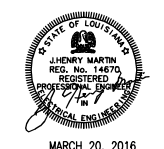


**3**  
E-2.1  
**GROUND WELL DETAIL**  
N.T.S. (TYP. OF TWO)



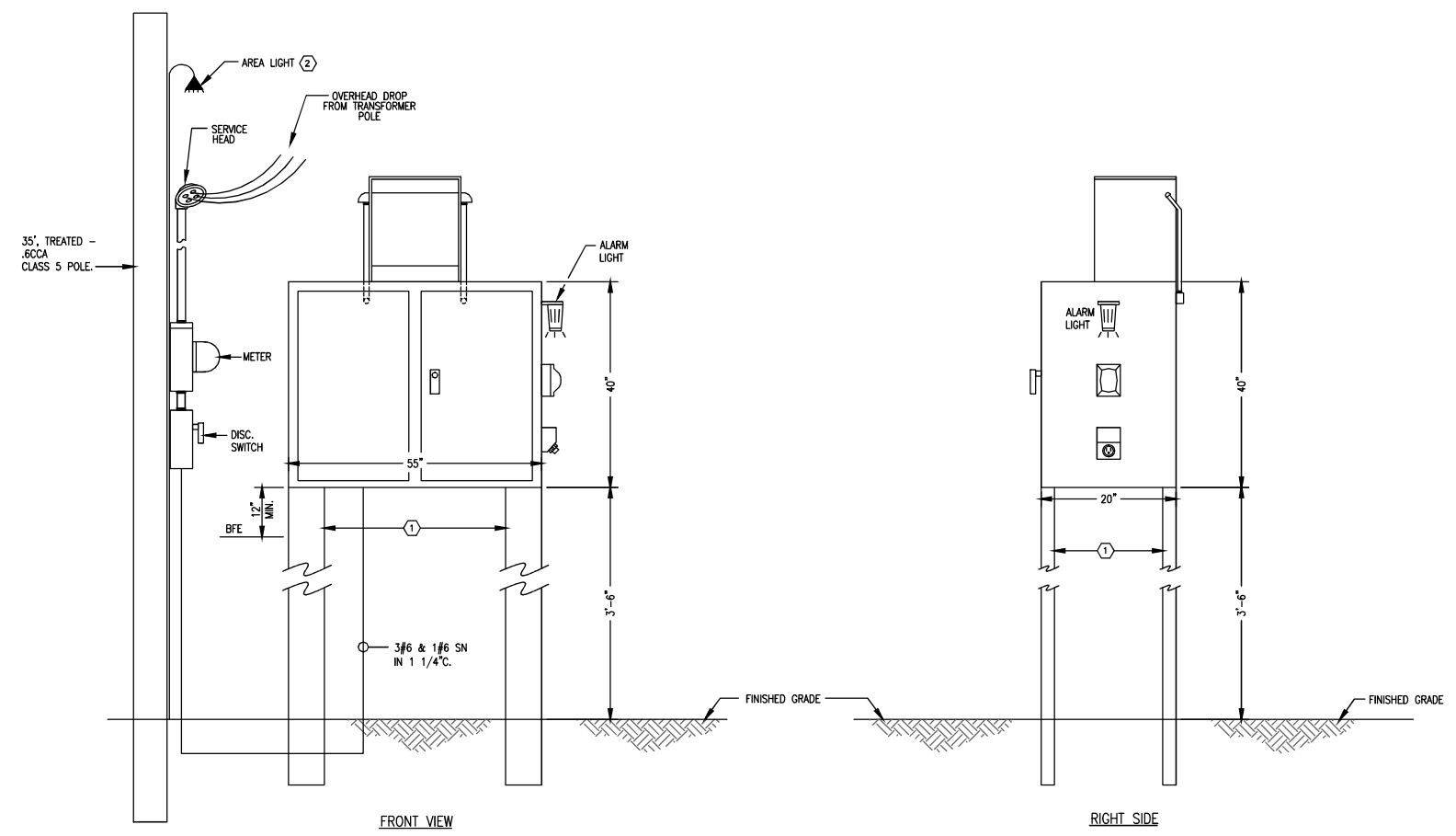
**4**  
E-2.1  
**SUBMERSIBLE LEVEL TRANSMITTER  
INSTALLATION DETAIL**  
N.T.S.

Henry Martin Consultant, L.L.C.  
2313 N. HULLEN ST., SUITE B METAIRIE LA, 70001 (504) 833-6189 FAX (504) 831-6801  
HMC JOB No. 1513



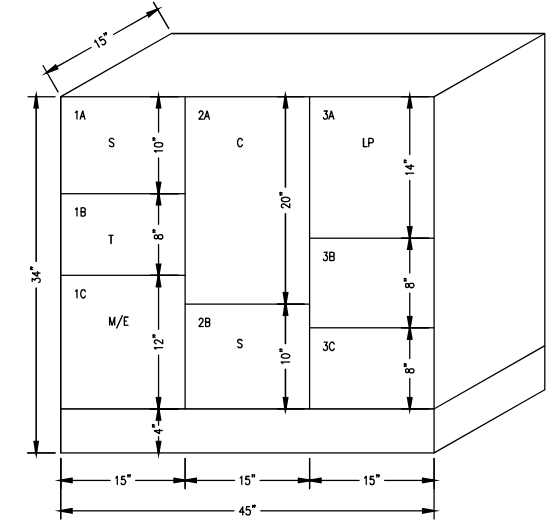
**ASSOCIATES, INC.**  
 ENGINEERS-ARCHITECTS-PLANNERS  
 PROGRAM & PROJECT MANAGERS  
 PORT OF ST. BERNARD  
 SEWAGE LIFT STATIONS IMPROVEMENTS  
 ST. BERNARD PARISH  
 CHALMETTE, LOUISIANA  
 LIFT STATION NO.2 - DIAGRAMS & DETAILS

SHEET NUMBER	E-2.2
DESIGNED	JHM
CHECKED	JHM
DETAILED	DBP
CHECKED	JHM
DATE	MARCH 20, 2016
SHEET	



**1**  
E-2.2  
N.T.S.

**NEMA 3RX STAINLESS STEEL HOUSING  
FOR NEMA 12 STAINLESS STEEL MOTOR CONTROL CENTERS**



**2**  
E-2.2  
N.T.S.

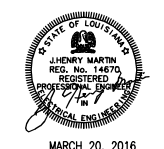
**STAINLESS STEEL NEMA 12  
MOTOR CONTROL CENTER**

**GENERAL NOTES:**

1. ALL ELECTRICAL PANELS AND CONTROL PANELS SHALL BE LOCATED A MINIMUM OF 42" FROM WET WELL LOCATION.
2. ALL EXPOSED CONDUIT IN FREE AIR SHALL BE COPPER FREE ALUMINUM. (NOT IN WET WELL).
3. ALL WATER TIGHT CONNECTIONS ON CONTROL PANEL, DISCONNECT SWITCHES, ETC. SHALL BE MEYERS HUBS SHALL BE COPPER FREE ALUMINUM.
4. NEOPRENE WASHERS SHALL SEPARATE DISSIMILAR METALS TO PREVENT ELECTROLYSIS.
5. ALL UNDERGROUND CONDUIT SHALL BE SCHEDULE 40 ENCASED IN 3" OF RED CONCRETE. THE BEND TO ABOVE SHALL BE PVC COATED COPPER FREE ALUMINUM (ROBOROY PVC COATED CONDUIT OR APPROVED EQUAL).
6. VOLTAGE 277/480V, CONFIRM WITH ENERGY BEFORE ORDERING PANEL OR PUMP MOTORS. MAKE CHANGES AS REQUIRED AT NO ADDITIONAL COST TO OWNER.

**SPECIFIC NOTES:**

- (1) SUPPORT FOR CONTROL PANEL SHALL BE SUPPLIED BY CONTROL PANEL SUPPLIER. SUPPORT SHALL BE STAINLESS STEEL.
- (2) AREA LIGHT, AMENICON #11PKG-105RN2-120-RSBA OR EQUAL BY COPPER. LIGHT TO BE SWITCHED BY PHOTO-CELL ON LIGHT FIXTURE.



MARCH 20, 2016

**Henry Martin Consultant, L.L.C.**  
 2313 N. HULLEN ST. SUITE B (504) 833-6189  
 METAIRIE LA, 70001 METAIRIE LA, 70001 FAX (504) 831-6801  
 HMC\_JOB No. 1513

**ASSOCIATES, INC.**  
 ENGINEERS-ARCHITECTS-PLANNERS  
 PROGRAM & PROJECT MANAGERS  
 PORT OF ST. BERNARD  
 SEWAGE LIFT STATIONS IMPROVEMENTS  
 ST. BERNARD PARISH  
 CHALMETTE, LOUISIANA  
 LIFT STATION NO.2 - DIAGRAMS & DETAILS