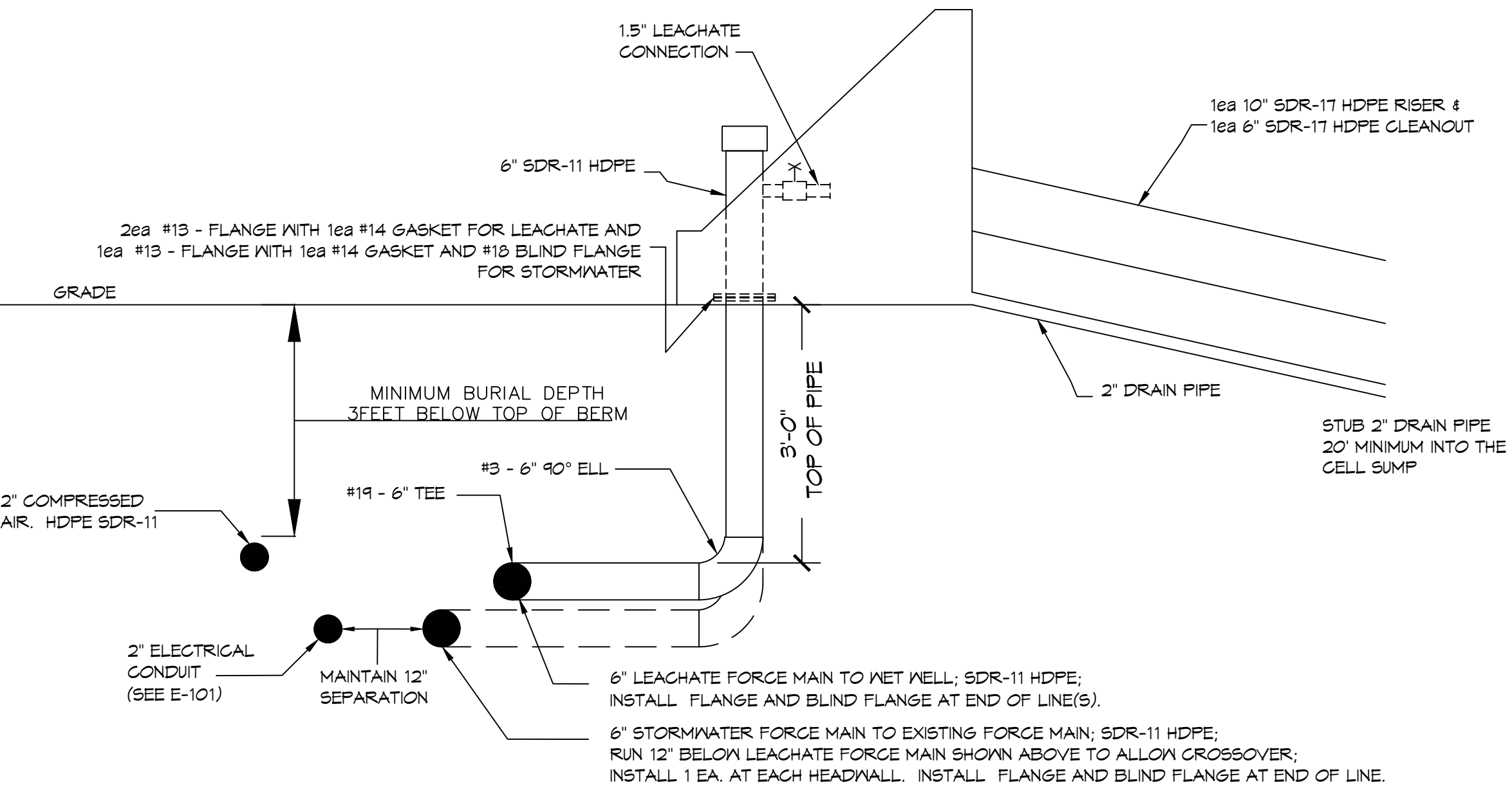


FILE NAME: J:\Projects\2024\24000 - Tangipahoa Cell 16\Drawings\24000 - Tangipahoa Cell 16 - SDR-11 HDPE Force Mains.dwg, Date Plotted: 05/22/2024, 10:58:10 AM, Plotter: HP DesignJet 500, Plot Scale: 1.00, Sheet: 2 of 4



TYPICAL CELL HEADWALL
N.T.S.

GENERAL NOTES:

- PROVIDE ALL LABOR, MATERIAL AND EQUIPMENT FOR A COMPLETE OPERATING SYSTEM. THE SYSTEM SHALL INCLUDE PIPING, VALVES, FITTINGS, AND SUPPORTS WITHOUT ANY RESTRICTIONS TO VOLUME. CONTRACTOR TO CONSTRUCT NEW RISERS WITH CONNECTORS FOR RAIN WATER PUMPS AT EACH HEADWALL.
- CONTRACTOR SHALL PROVIDE LISTED EQUIPMENT FROM MANUFACTURE LISTED OR EQUAL.
- ALL WORK AND MATERIAL SHALL CONFORM STRICTLY TO THE LATEST LOCAL, CITY, PARISH, STATE, DEQ AND NATIONAL GOVERNING CODES.
- CONTRACTOR INSTALLING HDPE PIPE SHALL BE CERTIFIED BY THE MANUFACTURER TO INSTALL HDPE PIPING.
- CONTRACTOR IS TO FIELD VERIFY ALL EXISTING UTILITY LOCATIONS, ELEVATIONS AND SIZES PRIOR TO COMMENCING ANY WORK. CONTRACTOR SHALL PAY NECESSARY FEES FOR PERMITTING.
- CONTRACTOR IS RESPONSIBLE TO VERIFY THE EXISTING INVERTS AND SET NEW INVERTS OF FORCE MAIN AND LEACHATE RISER PIPES.
- FITTINGS SHALL BE MANUFACTURED FROM A HDPE, SDR-11 (HIGH DENSITY POLYETHYLENE) COMPOUND PER ANSI B-16.40, ASTM D2513 DOT PART 192 AND MANUFACTURED IN ACCORDANCE WITH ISO 9002. ALL FITTINGS SHALL BE PRODUCED TO SCHEDULE 80 DIMENSIONS. PRODUCTS SHALL BE PRESSURE RATED FOR A MINIMUM OF 160 PSI USING QUALITY ASSURANCE TEST REQUIREMENTS OF THESE STANDARDS WITH REGARD TO DIMENSIONS, WORKMANSHIP, BURST PRESSURE, FLATTENING RESISTANCE AND END PRODUCT QUALITY. ALL VALVE DIAPHRAGMS AND SEATS SHALL BE PTFE, VALVE O-RINGS SHALL BE EPDM OR VITON® AS APPLICABLE. ALL VALVE UNION NUTS SHALL HAVE BUTTRESS STYLE THREADS. ALL VALVE COMPONENTS SHALL BE REPLACEABLE. ALL SYSTEM COMPONENTS SHALL BE MANUFACTURED BY AN ISO CERTIFIED MANUFACTURER.
- HDPE SDR 17 PIPE MATERIAL USED FOR THE MANUFACTURING OF POLYETHYLENE PIPE SHALL BE PE 3408 HIGH DENSITY POLYETHYLENE (HDPE), MEETING THE ASTM D3350 CELL CLASSIFICATION 345464C. POLYETHYLENE PIPE SHALL BE MANUFACTURED IN ACCORDANCE WITH ANWA C906, CONSISTENTLY MEETING AND/OR EXCEEDING THE QUALITY ASSURANCE TEST REQUIREMENTS OF THIS STANDARD WITH REGARD TO PRESSURE RATING, MATERIAL, WORKMANSHIP, BURST PRESSURE, FLATTENING, IMPACT RESISTANCE, AND EXTRUSION QUALITY. PRESSURE RATINGS FOR SDR-17 PIPE SHALL BE A MINIMUM OF 100 PSI (PE3408) OR 125 PSI (PE4710) FOR PIPE SIZES 4" TO 14", IPS (IRON PIPE SIZE). THE PIPE SHALL BE MANUFACTURED IN THE USA, USING DOMESTIC MATERIALS, BY A CERTIFIED HDPE MANUFACTURER. ALL PIPES SHALL BE STORED INDOORS AFTER PRODUCTION AT THE MANUFACTURING SITE UNTIL SHIPPED FROM FACTORY.

- BUTT FUSION SHALL BE USED TO JOIN INDIVIDUAL LENGTHS OF PIPE IN THE FOLLOWING SEQUENCE.
 - SECURE COMPONENTS TO BE JOINED WITH CLAMPING DEVICE(S).
 - FACE PIPE ENDS TO MEET MANUFACTURERS SPECIFICATIONS, USING A ROTATING PLANNER BLOCK.
 - PROPERLY ALIGN PIPE.
 - HEAT ENDS OF PIPE TO MANUFACTURER'S RECOMMENDATION AND BRING TOGETHER AT RECOMMENDED FORCE USING A HYDRAULIC MACHINE THAT WILL APPLY MANUFACTURER'S SPECIFIED FORCE, FOR THE PIPE SIZE.
 - HOLD PRESSURE ON PIPE JOINT FOR TIME SUFFICIENT TO DEVELOP THE REQUIRED STRENGTH, AS RECOMMENDED BY THE MANUFACTURER.
 - REMOVE THE INTERIOR BEAD, USING MANUFACTURER'S RECOMMENDED EQUIPMENT.
 - ALL JOINTS SHALL BE INSTALLED SUCH THAT THE CONNECTION OF PIPE SECTION SHALL BE WATERTIGHT AND FORM A CONTINUOUS LINE FREE FROM IRREGULARITIES IN THE FLOW LINE.
- TRENCH WIDTH SHALL BE IN ACCORDANCE WITH ASTM D2921 AND SHALL BE SUFFICIENT TO ENSURE WORKING ROOM TO PROPERLY AND SAFELY PLACE AND COMPACT HAUNCHING AND OTHER BACKFILL MATERIALS. TRENCH WIDTH SHALL INCLUDE SUFFICIENT AREA FOR HDPE FORCE MAIN AND ELECTRICAL CONDUITS WITH A MINIMUM SEPARATION OF 12". MINIMUM BACKFILL DEPTH SHALL NOT BE LESS THAN 36" WHERE VEHICULAR TRAFFIC CAN BE PRESENT AND 24" WHERE WASHOUT OCCURS.
- TEST ALL PIPING AT REQUIRED PRESSURE.
- THE DRAWINGS INDICATE SIZE AND GENERAL LOCATION OF WORK. SCALE DIMENSIONS SHALL NOT BE USED. THE EXACT LOCATION AND LOCATION OF ALL RISERS SHALL BE DETERMINED BY ACTUAL CONDITIONS IN THE FIELD.
- ALL FORCE MAINS AND PIPING NOT SHOWN FOR CLARITY, ALL LOCATIONS FIELD VERIFIED.

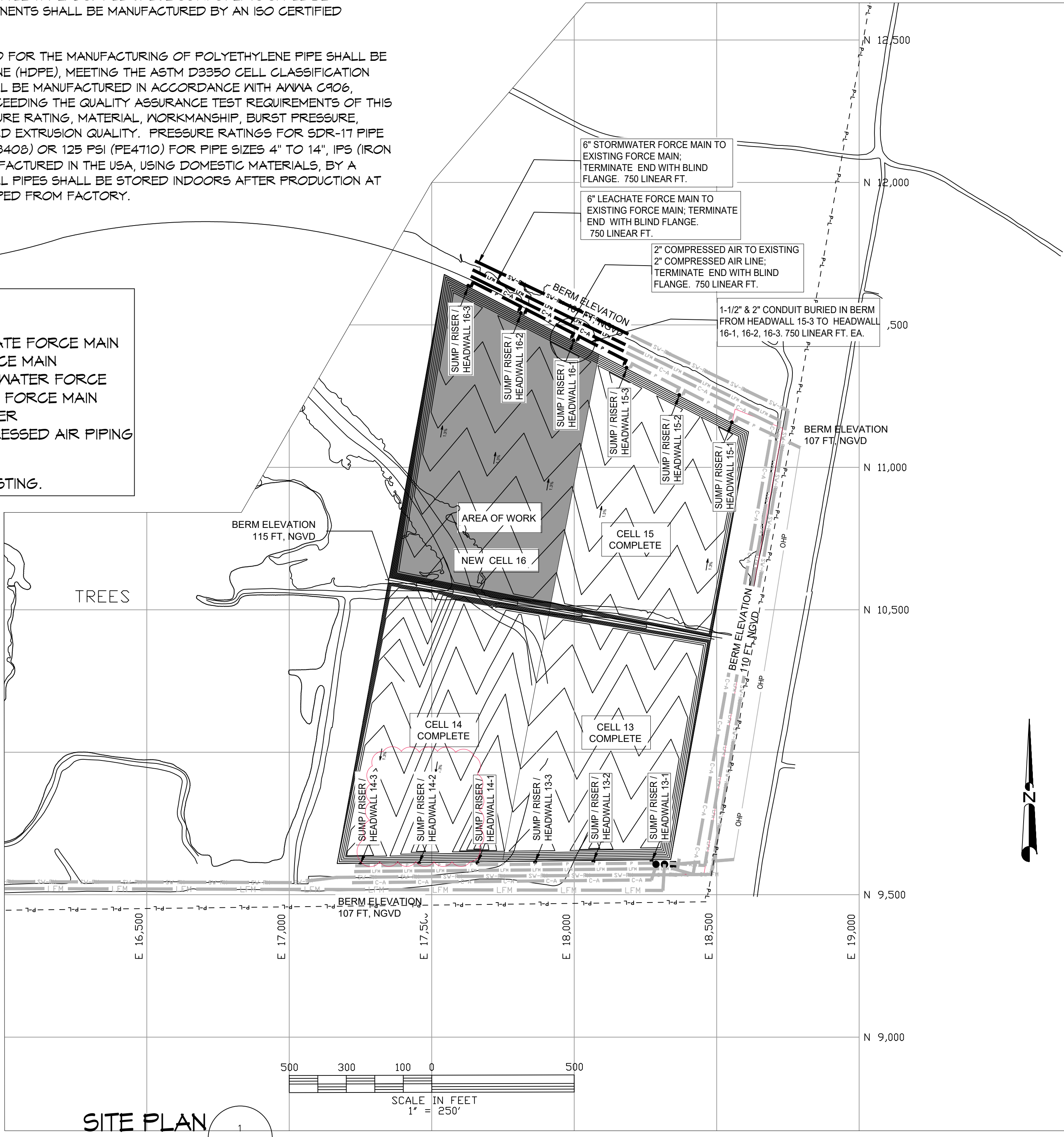
GENERAL CONSTRUCTION NOTES

- ALL MATERIALS AND WORK, INCIDENTAL TO THE CONSTRUCTION OF THIS PROJECT, SHALL CONFORM TO ALL GOVERNING CODES, AND REGULATIONS OF AGENCIES IN AUTHORITY.
- CONTRACTOR SHALL PROVIDE ALL PUBLIC PROTECTIONS NECESSARY AS REQUIRED BY LAW.
- THE DRAWINGS, SPECIFICATIONS AND ANY SUBSEQUENTLY ISSUED ADDENDA, AMENDMENTS OR SUCH CHANGE ORDERS APPROVED BY THE OWNER AND THE CONTRACTOR ARE PART OF THESE CONTRACT DOCUMENTS.
- CONTRACTOR SHALL WARRANT ALL WORK FOR ONE (1) YEAR FROM THE DATE OF SUBSTANTIAL COMPLETION UNLESS SPECIFICALLY DIRECTED IN OTHER DRAWINGS, SPECIFICATIONS OR SUBSEQUENTLY ISSUED ADDENDA OR AMENDMENTS.
- DO NOT SCALE DRAWINGS.** CONSULT WITH THE ENGINEER REGARDING ANY ITEMS IN THE CONTRACT DOCUMENTS THAT REQUIRE CLARIFICATION.
- TRASH SHALL BE REMOVED FROM THE SITE NOT LESS THAN TWICE MONTHLY.
- THE GENERAL CONTRACTOR SHALL VERIFY EXISTING CONDITIONS PRIOR TO COMMENCING WORK AND REPORT ANY AND ALL DISCREPANCIES TO THE ARCHITECT.
- CONTRACTOR VEHICLES AND EQUIPMENT NECESSARY FOR CONSTRUCTION MAY BE PARKED ON THE SITE. OTHER VEHICLES PARKED ON THE SITE REQUIRE THE OWNER'S PERMISSION.
- NAMING A CERTAIN BRAND, MAKE OR MANUFACTURER IS TO DESIGNATE THE GENERAL STYLE, TYPE, CHARACTER AND QUALITY STANDARD OF THE PRODUCT DESIRED. SUBSTITUTION REQUESTS MUST BE SUBMITTED PRIOR TO BIDDING.
- ALL MATERIALS/EQUIPMENT SHALL BE INSTALLED PER MANUFACTURER'S RECOMMENDATIONS. WORK NOT CONSISTENT WITH MANUFACTURER'S RECOMMENDATIONS WILL BE REJECTED BY OWNER/ARCHITECT.

LEGEND

- 6" SDR-11 LEACHATE FORCE MAIN TO EXISTING FORCE MAIN
- 6" SDR-11 STORMWATER FORCE MAIN TO EXISTING FORCE MAIN
- ELECTRICAL POWER
- 2" SDR-11 COMPRESSED AIR PIPING TO EXISTING LINE.

NOTE: LIGHT COLOR LINES ARE EXISTING.



NOTE: NAMING A CERTAIN BRAND, MAKE OR MANUFACTURER IS TO DESIGNATE THE GENERAL STYLE, TYPE, CHARACTER AND QUALITY STANDARD OF THE PRODUCT DESIRED. SUBSTITUTION REQUESTS MUST BE SUBMITTED PRIOR TO BIDDING.

DAMMON ENGINEERING, INC.
 LOUISIANA & MISSISSIPPI
 Chief Engineer: Brian Mistich, PE
 554 Old Spanish Trail
 Slidell, LA 70558
 www.dammonengineering.com
 info@dammonengineering.com
 PH: 985.649.5832

#	DESCRIPTION	DATE



TANGIPAHOA CELL 16
SHATE & COMPANY
WATER AND EQUIPMENT
ENGINEERING

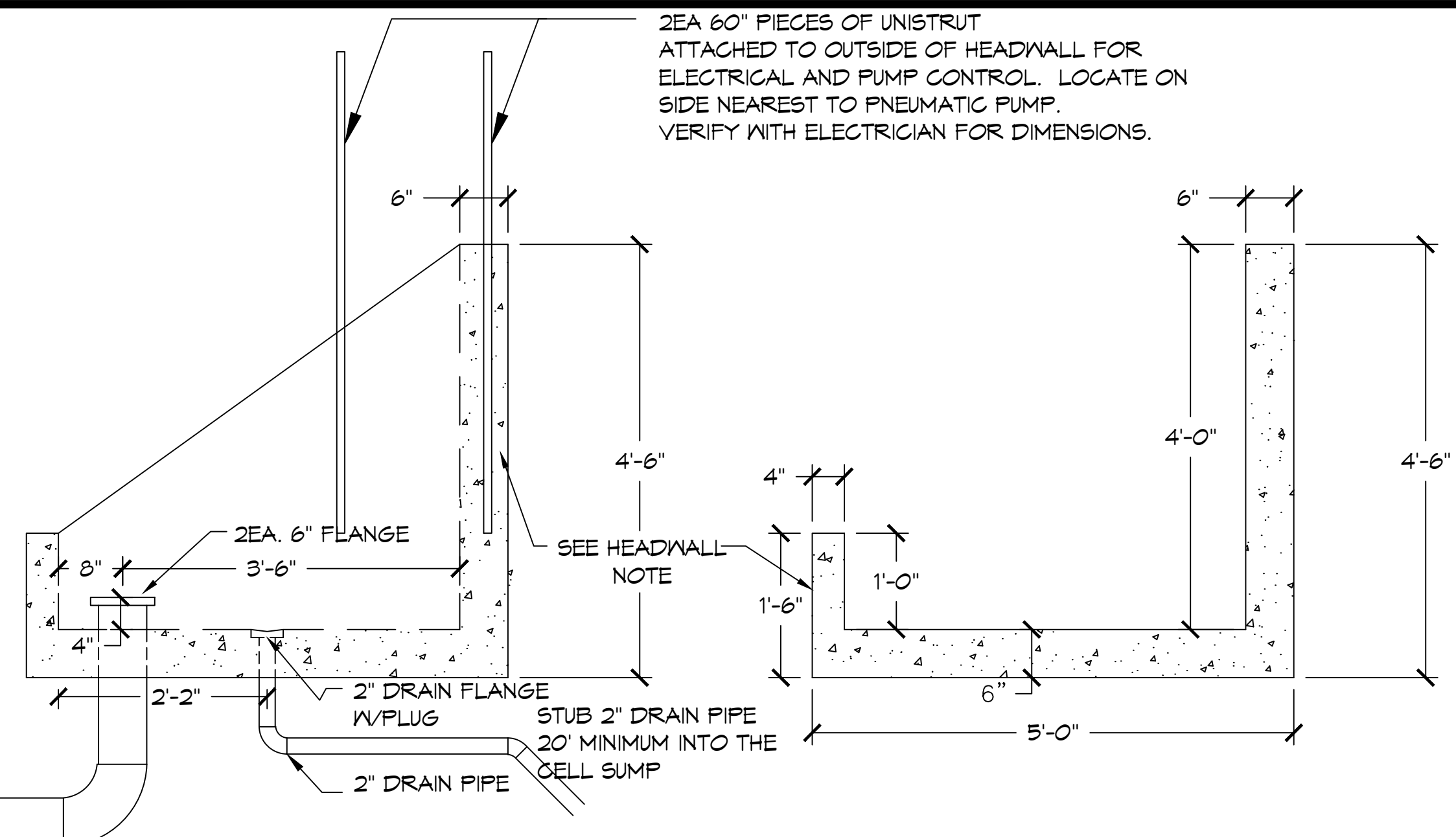
TANGIPAHOA REGIONAL SOLID WASTE FACILITY
 57510 HANO ROAD
 INDEPENDENCE, LOUISIANA
 JOB No: 2460 DATE: 4/30/2024
 DRAWN BY: KJK/JTL CHECKED BY: KJK

SHEET TITLE:
 PARTIAL SITE PLAN

DRAWING NUMBER:
M101

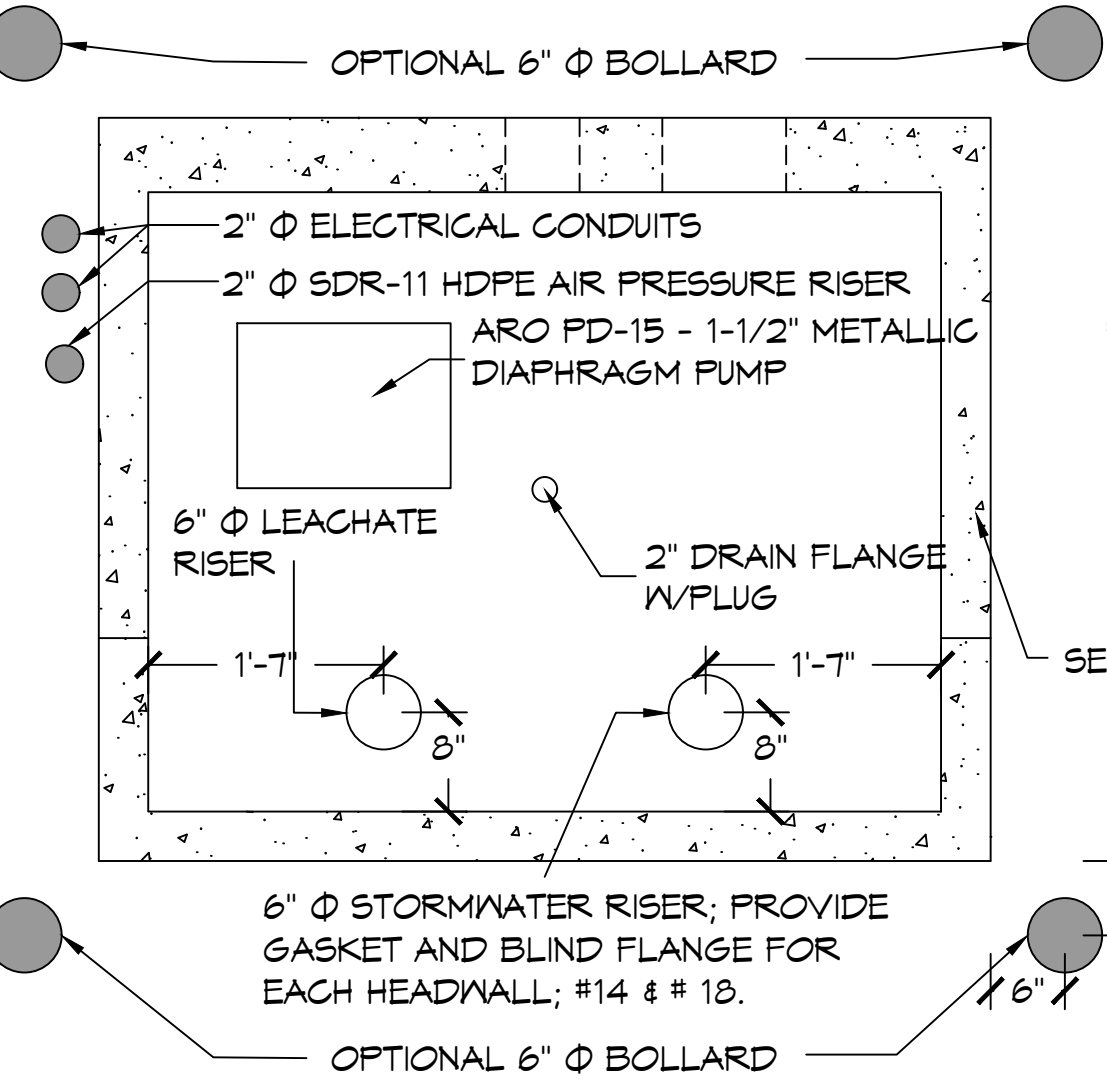
SHEET No: 1 of 4

FILE NAME: A:_General\1400 - 1400\1400.dwg
 PROJECT: 1400 - 1400
 DATE: 1/3/2024
 DRAWN BY: KJK/JTL
 CHECKED BY: KJK
 PLOTTED: 1/3/2024 10:00 AM
 PLOTTER: HP DesignJet T1100

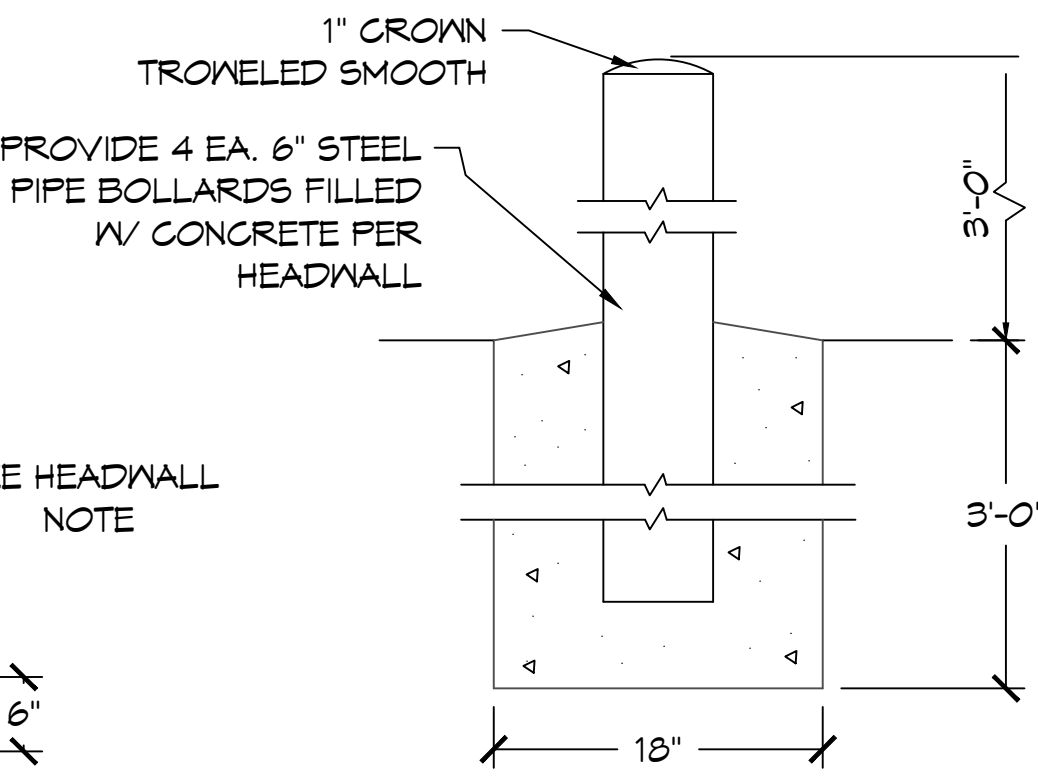


CROSS-SECTION HEADWALL 4E
N.T.S. M102 M102

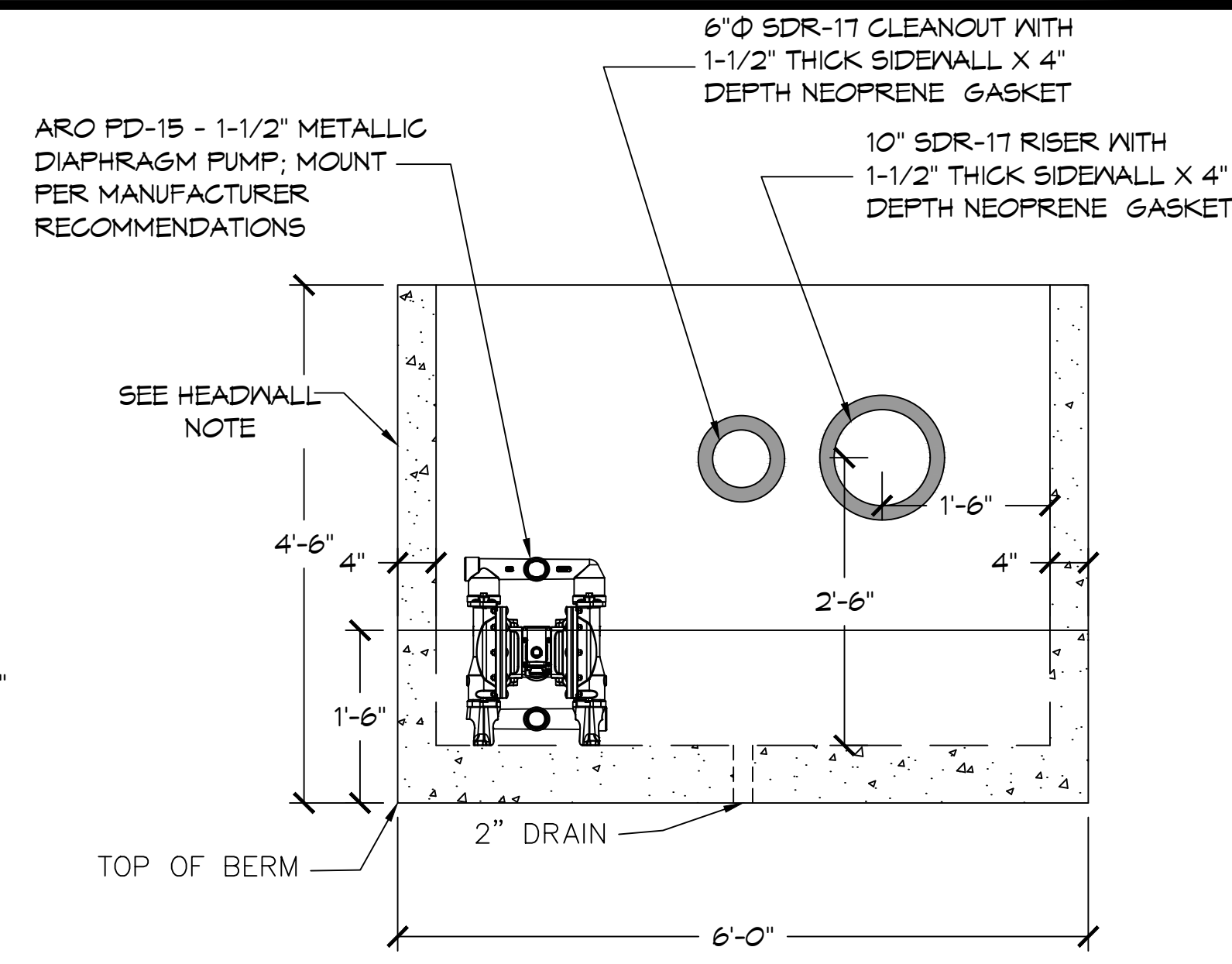
CROSS-SECTION HEADWALL 4D
N.T.S. M102 M102



HEADWALL PLAN VIEW 4C
N.T.S. M102 M102



PIPE BOLLARD DETAIL 4B
N.T.S. OPTIONAL M102 M102



HEADWALL FRONT ELEVATION 4A
N.T.S. M102 M102

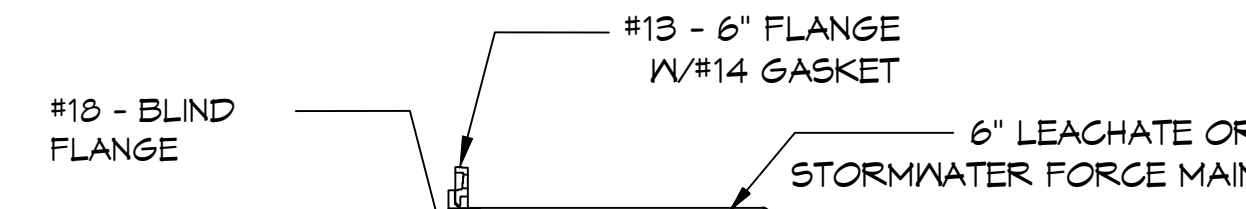
HEADWALL NOTE: CONTRACTOR SHALL USE 4,000 PSI CONCRETE, #5 BARS CONTINUOUS 12" O.C., ALL EDGES SHALL HAVE A CHAMFERED EDGES. HEADWALLS SHALL BE CAST IN PLACE ONLY.

HEADWALL DETAILS 4
N.T.S. M102 M102

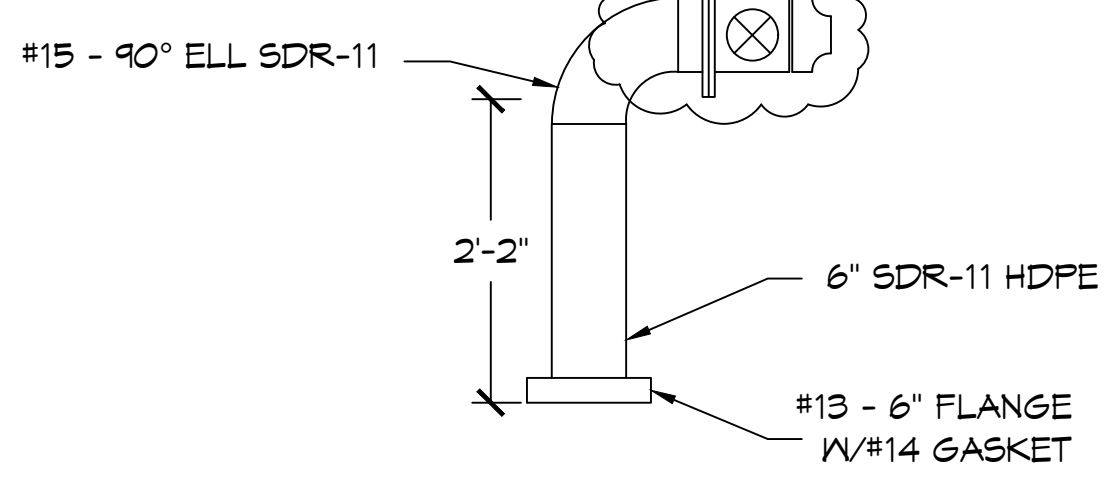
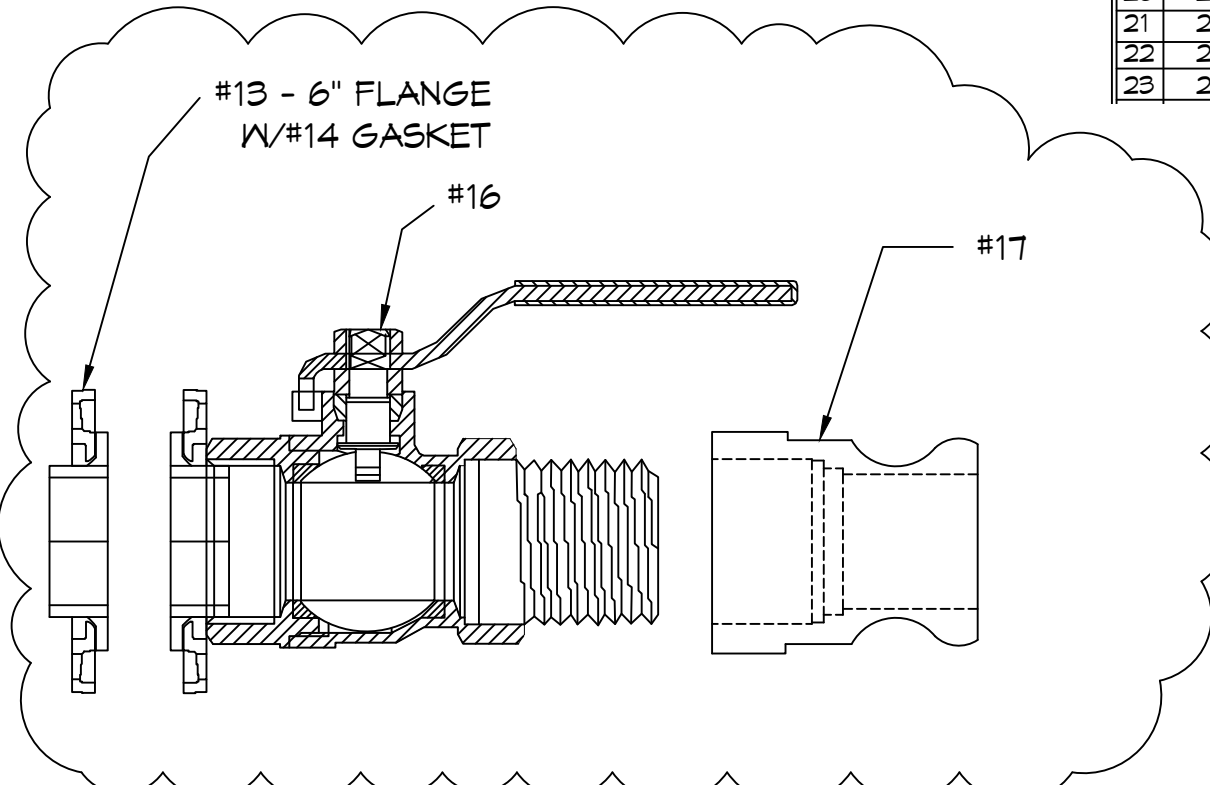
#	ITEM
1	1.5" SUMP STRAINER, 50 GPM; PART # CASS - 50 - 1-1/2" - NIPPLE - 100
2	1.5" SCH 80 PVC FEMALE ADAPTER, NPT x SOCKET
3	1.5" SCH 80 PVC PIPE
4	1.5" PVC ZOLLER UNICHECK VALVE; PART # 30-0041 CLEAR BODY
5	1.5" FLEXIBLE SUCTION TUBING, 90 PSI; STAINLESS STEEL NPTF (F) BOTH ENDS
6	1.5" POLYCAM TRANSITION HDPE TO STAINLESS STEEL
7	1.5" FLEXIBLE TUBING, 150 PSI; STAINLESS STEEL CAMLOCK DISCONNECT (FEMALE) x NPTF (F)
8	1.5" STAINLESS CAMLOCK DISCONNECT (MALE) w/FEMALE PIPE THREADS
9	1.5" STAINLESS BALL VALVE w/ MALE PIPE THREADS
10	1.5" STAINLESS COLLAR
11	6" x 1.5" HDPE SADDLE
12	6" SDR-11 CAP
13	6" SDR-11 FLANGE w/CI RING
14	6" POLYETHYLENE GASKET
15	6" SDR-11 90° ELL
16	6" STAINLESS BALL OR GATE VALVE WITH FLANGE
17	6" CAMLOCK STAINLESS (MALE) w/FEMALE PIPE THREADS
18	6" BLIND FLANGE
19	6" SDR-11 BUTT TEE
20	2" SDR-11 BUTT TEE
21	2" SDR-11 90° ELL
22	2" SDR-11 CAP
23	2" SDR-11 FLANGE w/CI RING

#	ITEM
24	2" POLYETHYLENE GASKET
25	2" x 1" HDPE SADDLE
26	1" POLYCAM TRANSITION HDPE TO STAINLESS STEEL
27	1" TO 1/2" STAINLESS STEEL REDUCER
28	1/2" STAINLESS STEEL BALL VALVE
29	1/2" FLEXIBLE HOSE, 150 PSI RATED WITH FEMALE THREADED STAINLESS COUPLINGS EACH END.

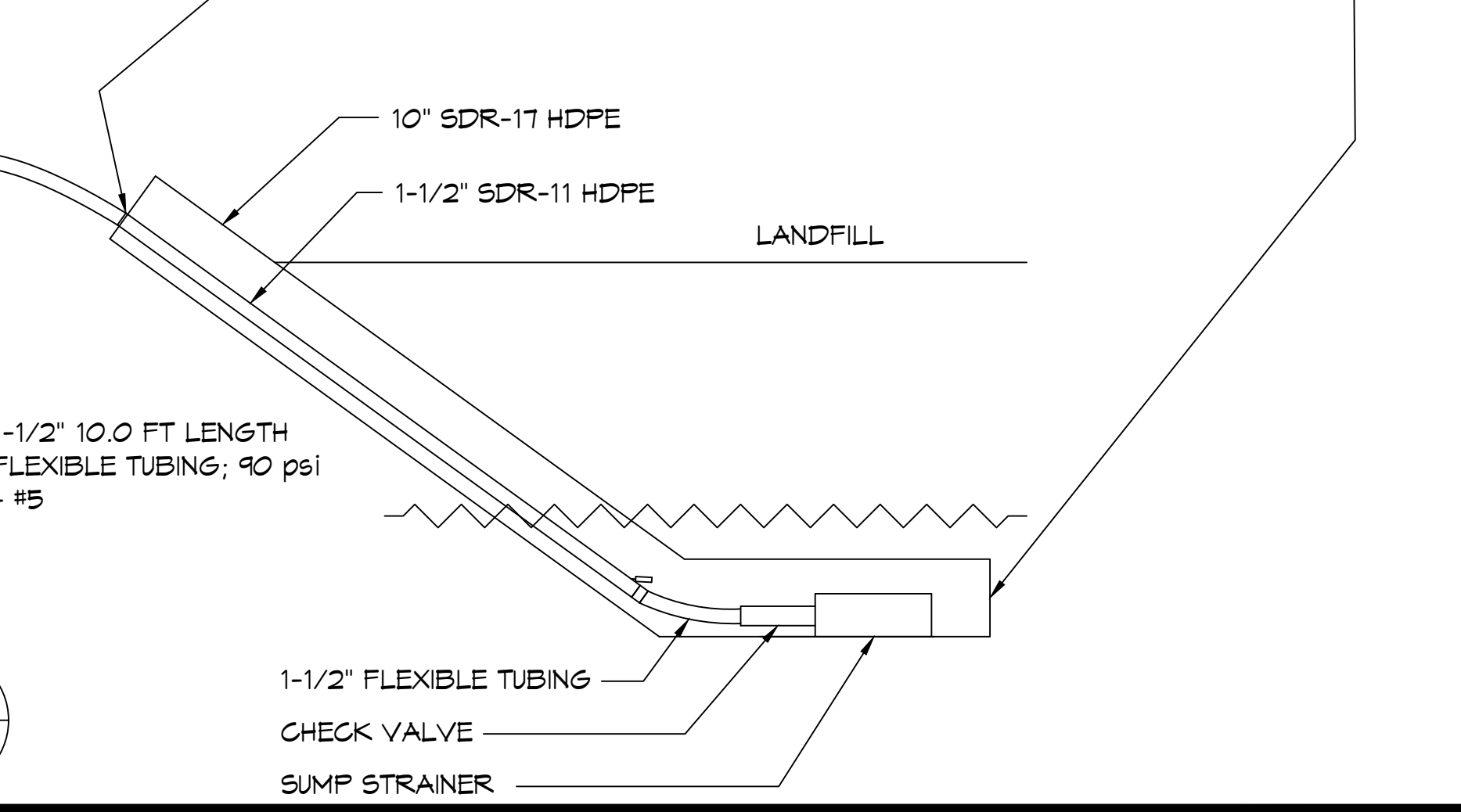
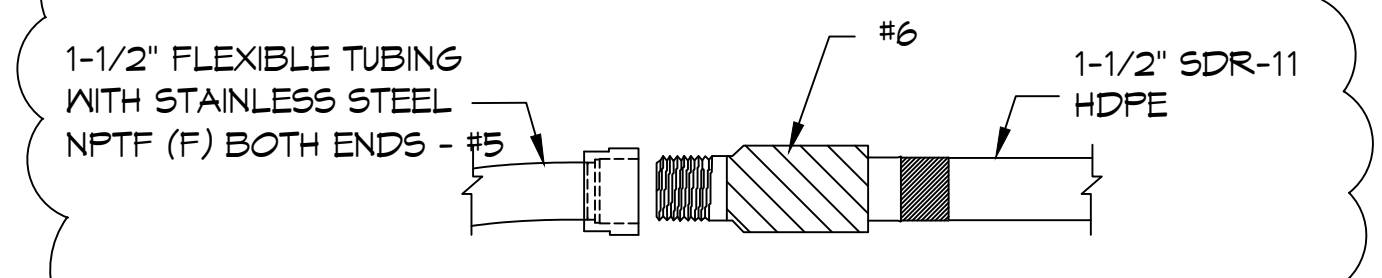
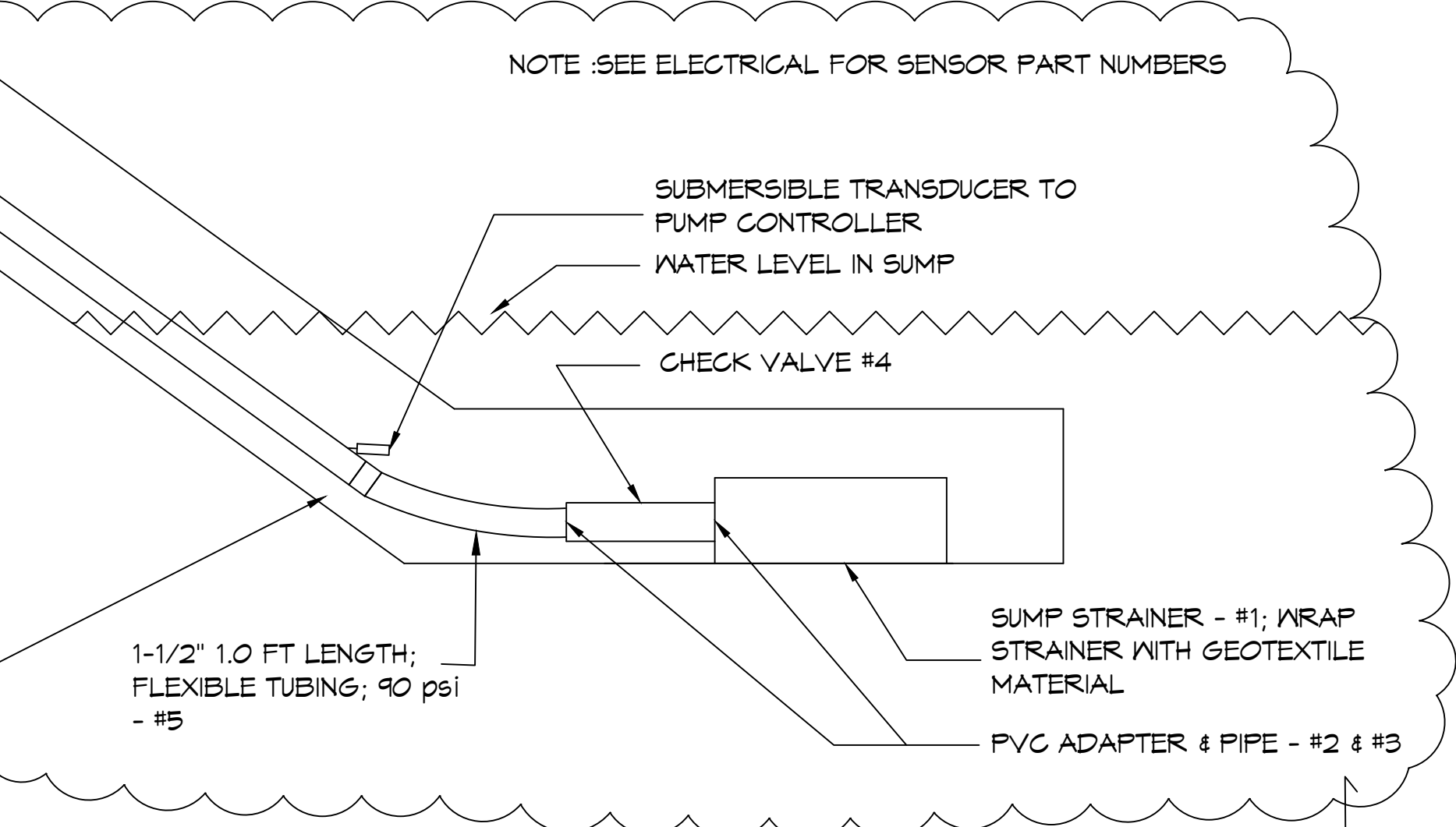
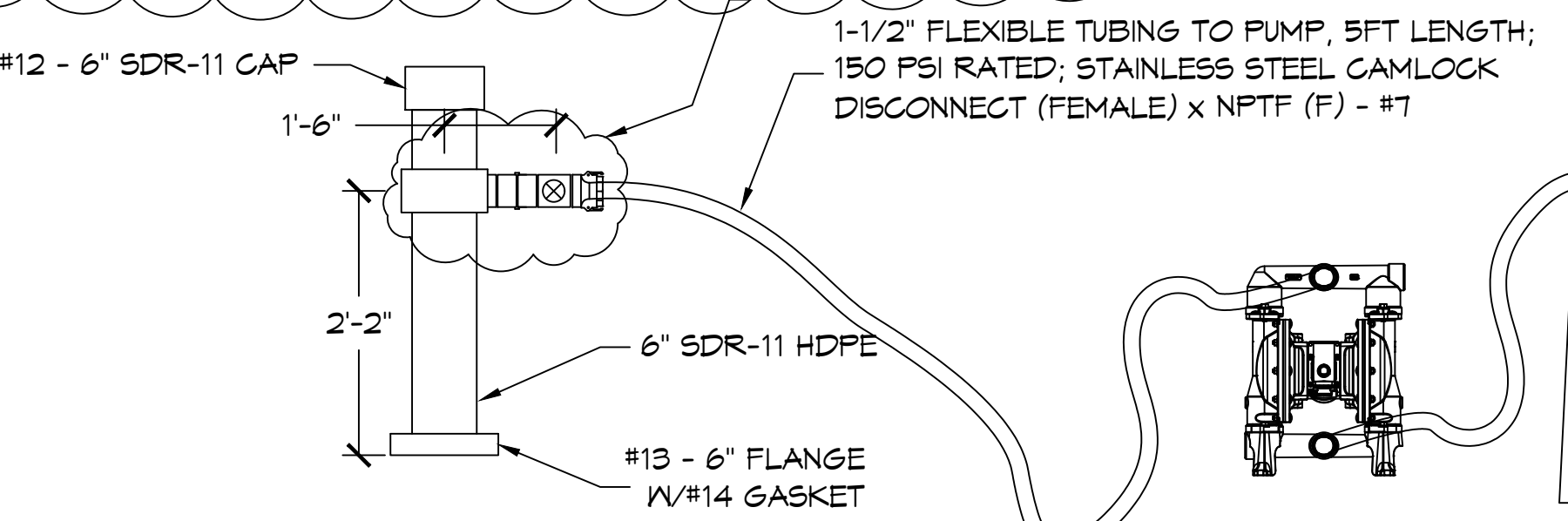
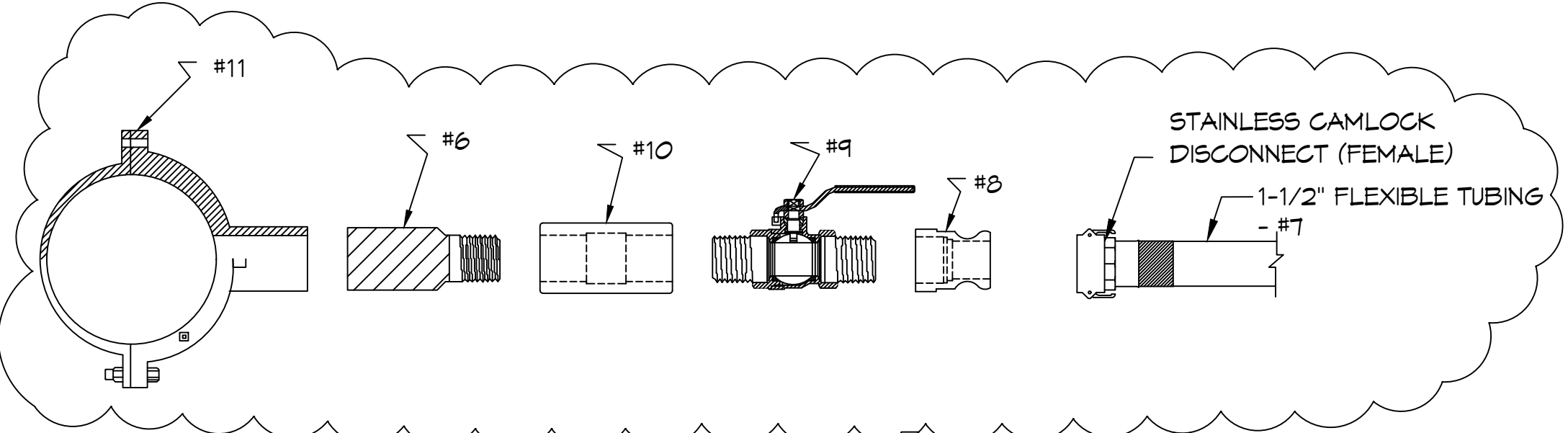
NOTE: NAMING A CERTAIN BRAND, MAKE OR MANUFACTURER IS TO DESIGNATE THE GENERAL STYLE, TYPE, CHARACTER AND QUALITY STANDARD OF THE PRODUCT DESIRED. SUBSTITUTION REQUESTS MUST BE SUBMITTED PRIOR TO BIDDING.



6" HDPE LEACHATE & STORMWATER 3
N.T.S. M102 M102



PROVIDE 2EA, CAPABLE OF ATTACHING AT EACH HEADWALL 2
N.T.S. STORMWATER FORCE MAIN M102 M102



ALL HEADWALLS 1
N.T.S. M102 M102

DAMMON ENGINEERING, INC.
 LOUISIANA & MISSISSIPPI
 Chief Engineer: Brian M. Misch, PE
 554 Old Spanish Trail
 Slidell, LA 70688
 www.dammonengineering.com
 info@dammonengineering.com
 PH: 985.649.5832

#	DESCRIPTION	DATE

STATE OF LOUISIANA
 BRIAN A. MISCH
 LICENSE NO. 33187
 1/3/2024
 PROFESSIONAL ENGINEER

SIPARHOA CELL 16
 CHATELAIN & ASSOCIATES
 ENGINEERING & EQUIPMENT
 TANGIPARHOA REGIONAL SOLID WASTE FACILITY
 57510 HANO ROAD
 INDEPENDENCE, LOUISIANA
 JOB No: 2460
 DATE: 9/30/2022
 DRAWN BY: KJK/JTL
 CHECKED BY: KJK

SHEET TITLE:
 HEADWALL & PIPING
 DETAILS
 DRAWING NUMBER:
M102
 SHEET No: 2 of 4

