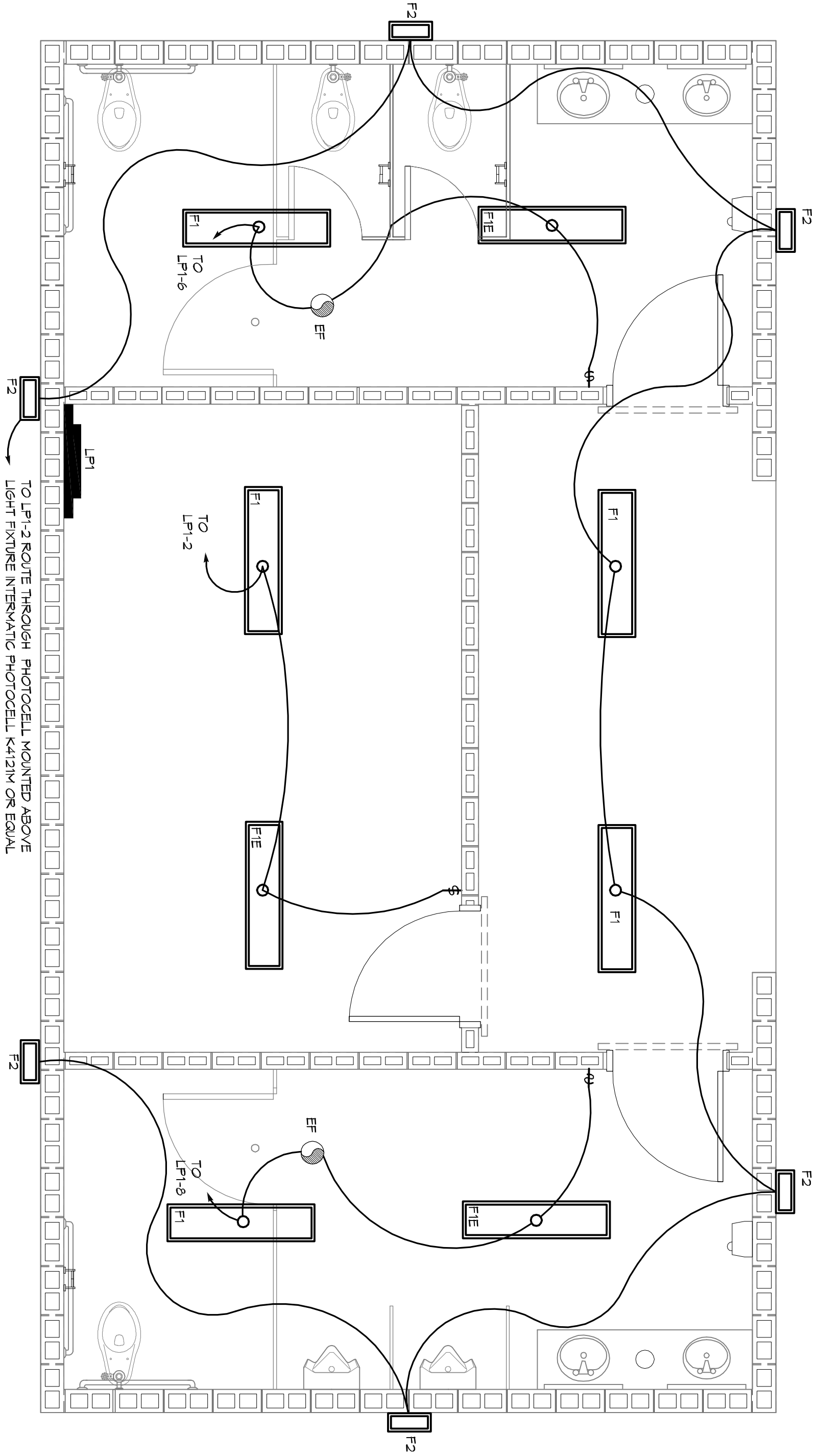


ELECTRICAL PLAN - POWER

SCALE 3/8" = 1'-0"



ELECTRICAL PLAN - LIGHTING

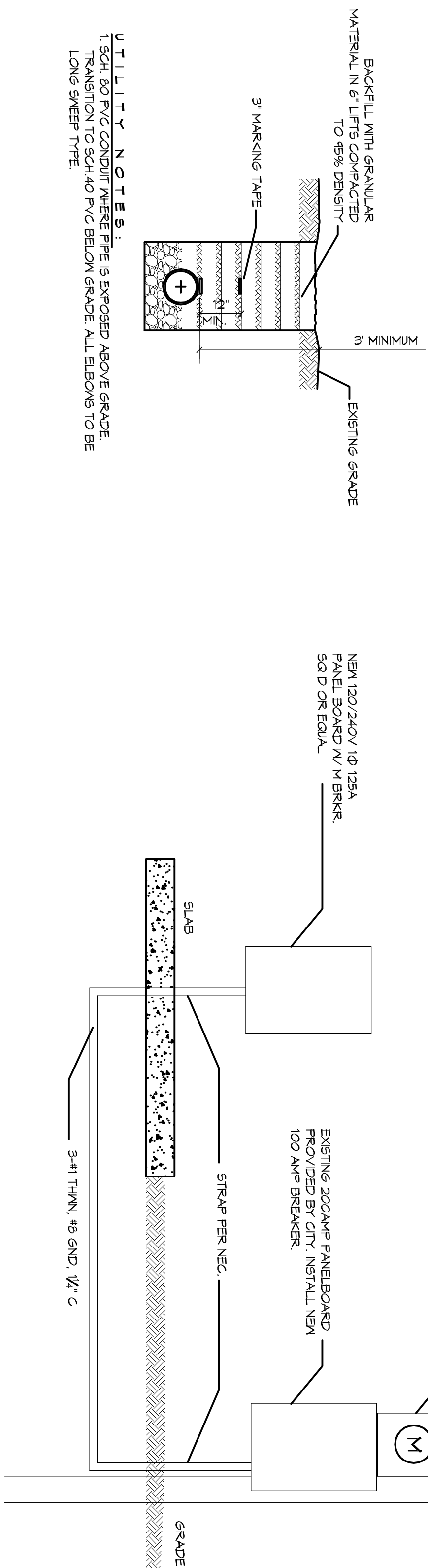
SCALE 3/8" = 1'-0"

- ### LEGEND
- ⊕ - 60" RECEPTACLE 20A 120V AT 36" AFF.
 - ⊕ - FLUSH MOUNTED LIGHT SWITCH WITH STAINLESS STEEL DEVICE PLATE, 120V 20A, MOUNT CENTER 6"± AFF.
 - ⊕ - CEILING EXHAUST FAN
 - ⊕ - ELECTRIC HAND DRYER, WORLD DRYER, MODEL DWS-47B OR EQUAL
 - ⊕ - POWER PANEL

PANEL: P-1		PANEL: 120/240V, 125A 1Ø, 3W, W/100A MAIN BRKR					
LOCATION: FEEDER SOURCE: CLECO		SURFACE MOUNTED W/EQUIPMENT GND BAR, 22,000 AIC					
CAT	THIN SHEET	BREAKER AMP POLE	LOAD (VA)	BREAKER POLE AMP	LOAD (VA)	THIN SHEET	CAT
1	#12	15	1	20	640	#12	2
2	#12	15	1	20	640	#12	4
3	#12	15	1	20	640	#12	6
4	#12	15	1	20	640	#12	8
5	#12	15	1	20	640	#12	10
6	#12	15	1	20	640	#12	12
7	#12	15	1	20	640	#12	14
8	#12	15	1	20	640	#12	16
9	#12	15	1	20	640	#12	18
10	#12	15	1	20	640	#12	20
11	#12	15	1	20	640	#12	22
12	#12	15	1	20	640	#12	24
13	#12	15	1	20	640	#12	26
14	#12	15	1	20	640	#12	28
15	#12	15	1	20	640	#12	30
16	#12	15	1	20	640	#12	32
17	#12	15	1	20	640	#12	34
18	#12	15	1	20	640	#12	36
19	#12	15	1	20	640	#12	38
20	#12	15	1	20	640	#12	40
21	#12	15	1	20	640	#12	42
22	#12	15	1	20	640	#12	44
23	#12	15	1	20	640	#12	46
24	#12	15	1	20	640	#12	48
TOTAL CONNECTED LOAD (VA) 11760		TOTAL CONNECTED LOAD (VA) 11760		TOTAL CONNECTED LOAD (VA) 11760		TOTAL CONNECTED LOAD (VA) 11760	
ADPS 955		BQ-5 795		GROUND BUS		GROUND WIRE (6)	

LIGHT FIXTURE SCHEDULE

MARK	DESCRIPTION
F1	SURFACE MOUNTED 1x4 FLUORESCENT LIGHT FIXTURE (2 BULB) TAMPER RESISTANT AND SUITABLE FOR DAMP LOCATIONS, VRS 5 3/4" V.L. 120 05B 05 OR EQUAL.
F2	SURFACE MOUNTED 1x4 FLUORESCENT LIGHT FIXTURE (2 BULB) TAMPER RESISTANT AND SUITABLE FOR DAMP LOCATIONS W/ 30 MIN. BACKUP POWER, VRS 5 3/4" V.L. 120 05B 05 ELDN OR EQUAL.
FIE	FLUSH MOUNTED 1x4 FLUORESCENT LIGHT FIXTURE (2 BULB) TAMPER RESISTANT AND SUITABLE FOR DAMP LOCATIONS W/ 30 MIN. BACKUP POWER, VRS 5 3/4" V.L. 120 05B 05 ELDN OR EQUAL.



- ### ELECTRICAL NOTES
- ALL WORK SHALL CONFORM TO THE LATEST EDITION OF THE NATIONAL ELECTRICAL CODE, THE GOVERNING ELECTRICAL CODE AND ALL OTHER INSPECTION DEPARTMENTS HAVING JURISDICTION. OBTAIN CERTIFICATES OR APPROVALS FROM ALL AFFECTED AGENCIES.
 - ALL MATERIALS AND METHODS TO BE USED SHALL BE LISTED.
 - THE DRAWINGS INDICATE SIZE AND GENERAL LOCATION OF WORK. SCALE OF ALL LIGHTING FIXTURES, RECEPTABLES AND TELEPHONE OUTLETS, ETC. SHALL BE DETERMINED BY ACTUAL CONDITIONS IN THE FIELD.
 - BEFORE TO BEING, CONTRACTOR SHALL VISIT THE JOB SITE AND VERIFY ALL CONDITIONS WITH THE ARCHITECT AND OWNER.
 - ELECTRICAL CONTRACTOR SHALL BE RESPONSIBLE FOR WORK WITH OTHER TRADES AND WITH OTHER CONTRACTORS WHOSE WORK MAY AFFECT THIS INSTALLATION.
 - ELECTRICAL CONTRACTOR SHALL COORDINATE INCLUDING ELECTRICAL SERVICE WITH UTILITY COMPANY AND INCLUDE IN HIS BID ALL CHARGES AND FEES INCURRED IN CONNECTIONS IN THE SAME LOCATION. THEY SHALL BE INSTALLED IN A SINGLE TYPE BOX UNDER ONE COVER PLATE.
 - ELECTRICAL CONTRACTOR BEFORE INSTALLING ANY OF THE WORK SHALL SEE THAT IT DOES NOT INTERFERE WITH CLEARANCES REQUIRED FOR FINISHED COLLINS, HUNG CEILING, PLASTER, PARTITIONS, WALLS, ETC. AS SHOWN IN THE ARCHITECTURAL DRAWINGS AND DETAILS. IF ANY WORK IS INSTALLED AND IT LATER DEVELOPS THAT SUCH DETAILS OR CONDITIONS ARE NOT SHOWN IN THE ARCHITECTURAL DRAWINGS AND DETAILS, CONTRACTOR SHALL BE RESPONSIBLE FOR CORRECTING THE SAME.
 - ARCHITECT AS WELL AS TO PERMIT THE INSTALLATION OF THE ARCHITECTURAL WORK AS SHOWN ON THE PLANS AND DETAILS.
 - PERFORM TEST REQUIRED BY THE OWNER OR THE ENGINEER IN CONNECTION WITH THE OPERATION OF THE ELECTRICAL SYSTEM IN THE BUILDING.
 - CONTRACTOR SHALL BE MADE IN ACCORDANCE WITH THE LATEST EDITION OF THE IEEE AND THE NATIONAL ELECTRICAL CODE.
 - MINIMUM CONDUCTOR SIZE SHALL BE #12, 600V INSULATION. MINIMUM SIZE CONDUIT SHALL BE 3/4" EMT FOR INTERIOR USE, AND 1" RIGID ALUMINUM FOR EXTERIOR USE. USE TYPE MC CABLE COPPER FOR LIGHTS AND RECEPTABLE CIRCUITS. EXTERIOR FITTINGS SHALL BE CAST IRON AND COVERS, INTERIOR FITTINGS SHALL BE CAST IRON EXPOSED ON WALLS AND CEILING. INTERIOR FITTINGS SHALL BE CAST IRON EXPOSED ON WALLS AND CEILING. INTERIOR FITTINGS SHALL BE CAST IRON EXPOSED ON WALLS AND CEILING. INTERIOR FITTINGS SHALL BE CAST IRON EXPOSED ON WALLS AND CEILING.
 - CONTRACTOR SHALL INSTALL RISING AND OTHER CIRCUIT COMPONENTS TO MATCH EQUIPMENT ACTUALLY INSTALLED.
 - INSTALL GROUND FAULT RECEPTABLES AT RECEPTACLE LOCATIONS WITHIN 9' OF SINKS OR LAVATORIES, AND AT EXTERIOR LOCATIONS.
 - EXTERIOR RECEPTABLES SHALL ALSO BE WEATHERPROOF.
 - TO 200-46 NFPA 70-2014 ARTICLE 410.12
 - GROUND NEUTRAL IN ACCORDANCE WITH NFPA 70-2014 ARTICLE 250-58B.
 - FUSES SHALL BE ITT CLASS 45, 250 VOLT, 200.00 AMP INTERRUPTING CAP.
 - EXTERIOR LIGHTING SHALL BE SHADDED OR INWARDLY DIRECTED IN SUCH A MANNER SO THAT NO DIRECT LIGHTING OR GLARE IS CAST BEYOND THE PROPERTY LINE. ALL LIGHTING SHALL BE INSTALLED IN ACCORDANCE WITH THE NATIONAL ELECTRICAL CODE.
 - ALL ELECTRICAL, MECHANICAL, AND PLUMBING PENETRATIONS THROUGH FIRE PARTITIONS SHALL BE FIRE CALKED. PENETRATIONS THROUGH SATED CONSTRUCTION SHALL BE SEALED WITH A MATERIAL CAPABLE OF PREVENTING THE PASSAGE OF FLAMES AND HOT GASES WHEN TESTED IN ACCORDANCE WITH ASTM E-814.

AS-BUILTS

REVISIONS

#	DESCRIPTION	DATE
1	ADDENDUM	8-11-2014

DAMMON ENGINEERING, INC.
Architects & Engineers

Chief Architect: Kevin J. Kinchen, NCARB
Chief Engineer: Brian Mistich, PE

554 Old Spanish Trail
Slidell, LA 70458

www.dammonengineering.com
info@dammonengineering.com
PH: 985.649.5832
F: 985.641.5930

AS-BUILTS

REVISIONS

#	DESCRIPTION	DATE
1	ADDENDUM	8-11-2014

DAMMON ENGINEERING, INC.
Architects & Engineers

Chief Architect: Kevin J. Kinchen, NCARB
Chief Engineer: Brian Mistich, PE

554 Old Spanish Trail
Slidell, LA 70458

www.dammonengineering.com
info@dammonengineering.com
PH: 985.649.5832
F: 985.641.5930

AS-BUILTS

REVISIONS

#	DESCRIPTION	DATE
1	ADDENDUM	8-11-2014

DAMMON ENGINEERING, INC.
Architects & Engineers

Chief Architect: Kevin J. Kinchen, NCARB
Chief Engineer: Brian Mistich, PE

554 Old Spanish Trail
Slidell, LA 70458

www.dammonengineering.com
info@dammonengineering.com
PH: 985.649.5832
F: 985.641.5930