

BACKFILL WITH GRANULAR MATERIAL IN 6" LIFTS COMPACTED TO 95% DENSITY (BACKFILL MUST BE ACCEPTABLE MATERIAL W/ APPROVAL OF ENGINEER)

EXIST. GROUND

VARIES

CRUSHED GRAVEL OR (6/10) LIVESTONE

3" MARKING TAPE

14 GAUGE COPPER LOCATOR

1/2 PIPE DIA

OD = 24"

A MIN. 10' FT. HORIZONTAL AND 18" VERTICAL SEPARATION IS REQUIRED BETWEEN WATER & SEWER LINE

**PIPE BEDDING DETAIL FOR SEWER & WATER LINE**  
N.T.S.

**CONCRETE MIX DESIGN**

MIX FOR ONE CUBIC YARD OF FIBER-REINFORCED CONCRETE:

28 DAY STRENGTH: 4000 PSI

CEMENT (ASTM C-150, TYPE I/II): 1.64 BAGS (456 LBS.)

FLY ASH (ASTM C-618): 1.15 BAGS (109 LBS.)

GRAVEL (ASTM C-33, GRADE A): 1226 LBS.

SAND (ASTM C-33): 302 GALLONS (250 LBS.)

WATER (POTABLE): 54.5 GAL

WATER REDUCER (ASTM C-494): 1.5 LBS. (OR MICROFIBERS, AS SPECIFIED BELOW)

5% BY VOLUME USE PER MANUFACTURER'S SPECIFICATIONS

FIBER REINFORCEMENT: 1.5 LBS. OF MICROFIBERS, AS SPECIFIED BELOW

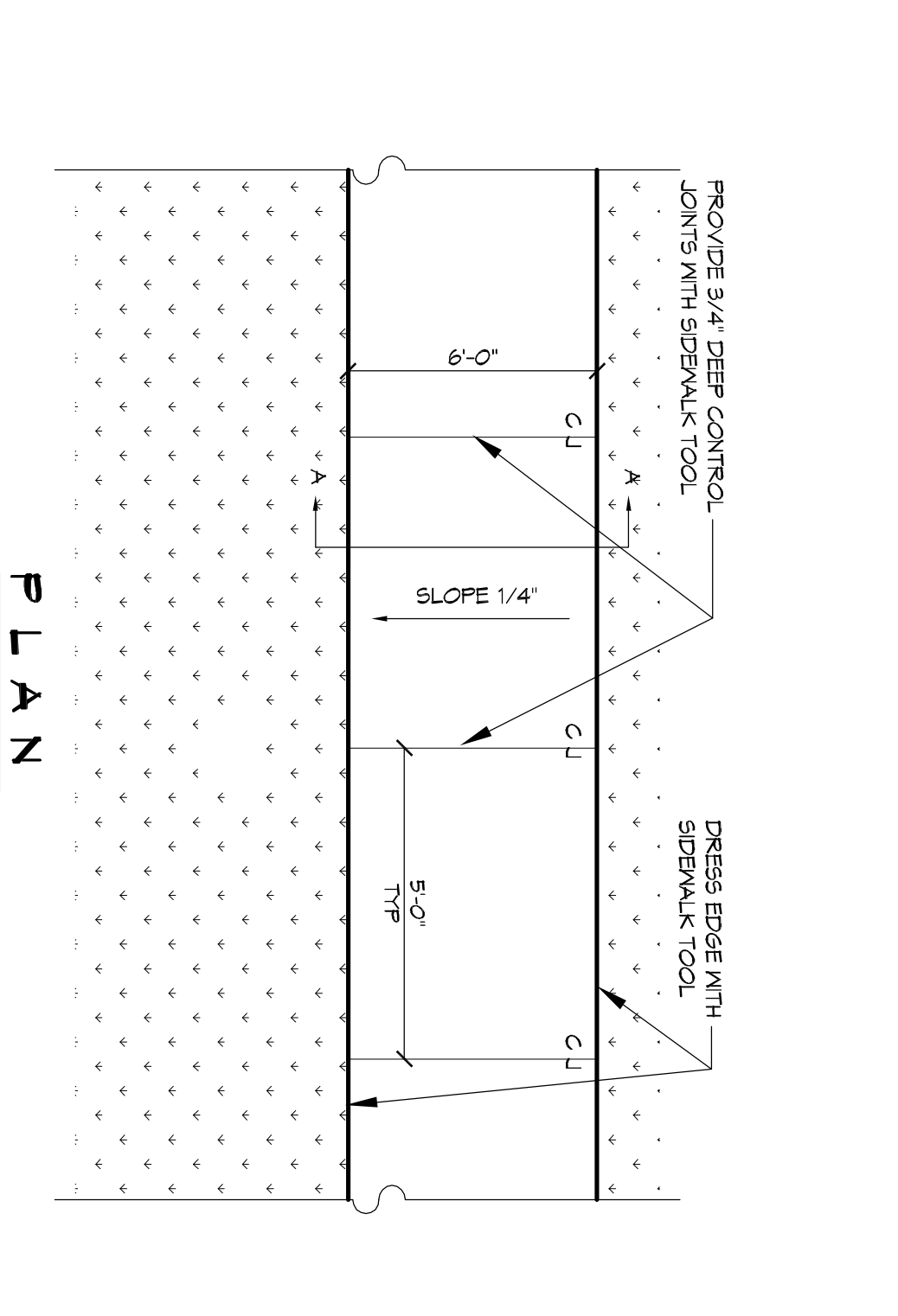
FIBER REINFORCEMENT FOR ALL CONCRETE SIDEWALKS AND DRIVEWAYS SHALL BE MATRIX MONOLITHMENT MICROFIBER AS MANUFACTURED BY FRC INDUSTRIES OR APPROVED EQUAL, APPLIED THROUGHOUT THE CONCRETE MIXTURE. ALTERNATE PRODUCTS MUST BE PRE-APPROVED BY THE CITY ENGINEER IN WRITING. CELLULOSE TREATED OR UN-TREATED, AS GLASS FIBER AND POLYESTER FIBERS ARE SPECIFICALLY PROHIBITED FROM USE.

CONTRACTOR SHALL FINISH ALL MATERIALS, LABOR, AND EQUIPMENT NEEDED TO CONSTRUCT HANDICAP RAMPS, AT INTERSECTIONS, MEDIANS, OR AS DIRECTED BY THE CITY ENGINEER. THE CONCRETE USED TO CONSTRUCT THE RAMPS SHALL BE 6" (6") THICK 4000-PSI AT 28 DAYS WHERE NECESSARY OR AS DIRECTED BY THE CITY ENGINEER. EXISTING SIDEWALK SHALL BE REMOVED AND REPLACED WITH NEW PORTLAND CEMENT CONCRETE. SIDEWALK AND TRUNCATED DOME TILE AS STIPULATED ACCORDING TO AMERICAN DISABILITY ACT REQUIREMENT. TRUNCATED DOME TILE SHALL BE MINIMUM 1/4" THICK WITH BEBEDDED TRUNCATED DOME SANDS ON CENTER. TRUNCATED DOME TILE SHALL BE MINIMUM 1/4" THICK WITH BEBEDDED TRUNCATED DOME SANDS ON CENTER. HANDICAP RAMP SHALL CONSIST OF ONLY ONE TILE WHICH SHALL BE ANCHORED INTO THE CONCRETE. THESE ARE A NO DIRECT PAY ITEM.

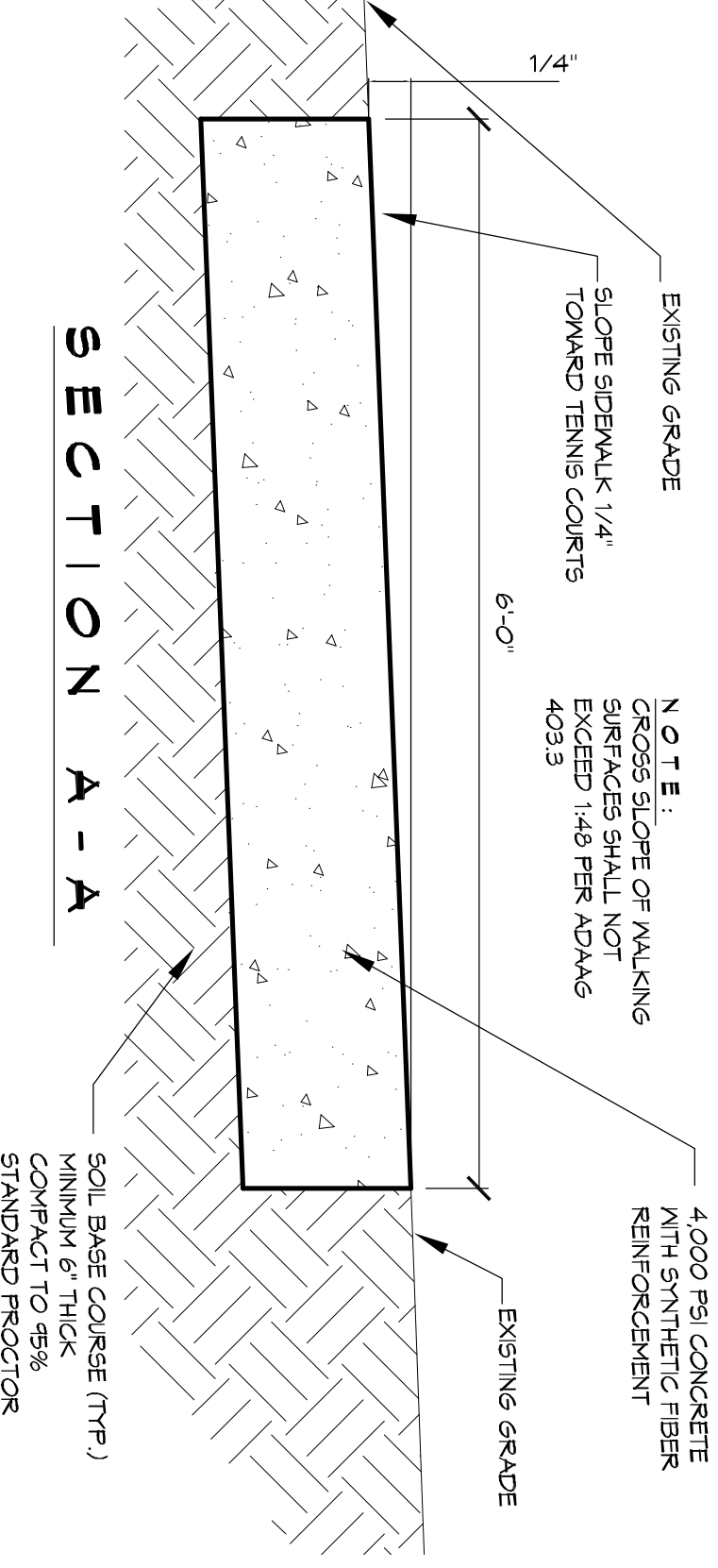
**SIDEWALK NOTES**

1. SIDEWALKS SHALL BE LOCATED AS NOTED. FIELD VERIFY WITH CITY ENGINEERING AND DAMMON ENGINEERING PRIOR TO FORMING. SCALING DIMENSION TO PRELIMINARY LOCATE SIDEWALKS IS PERMITTED.
2. ALL SIDEWALKS SHALL BE CONSTRUCTED OF PORTLAND CEMENT CONCRETE AND HAVE A MIN. THICKNESS OF 4".
3. SAND BASE COURSE (TYP) SHALL HAVE A MINIMUM OF 6" THICK COMPACT TO 95% STANDARD PROCTOR.
4. PROVIDE SYNTHETIC FIBER REINFORCING IN ACCORDANCE WITH ASTM C 1118 IN ALL CONCRETE SIDEWALKS.
5. ALL SIDEWALKS SHALL BE SLOPED TO A DEPTH OF 3/4" AT ACTIVE FOOT INTERSECTIONS.
6. PROVIDE DETECTABLE MARKING SYSTEM (ASTM F 1052) WHERE NEW SIDEWALKS TERMINATE INTO EXISTING STREETS AS NOTED.
7. ELEVATIONS SHOWN ARE V.S.L.
8. FIELD VERIFY ALL ELEVATIONS AND DRAINAGE SYSTEM PLACEMENT PRIOR TO START OF WORK.

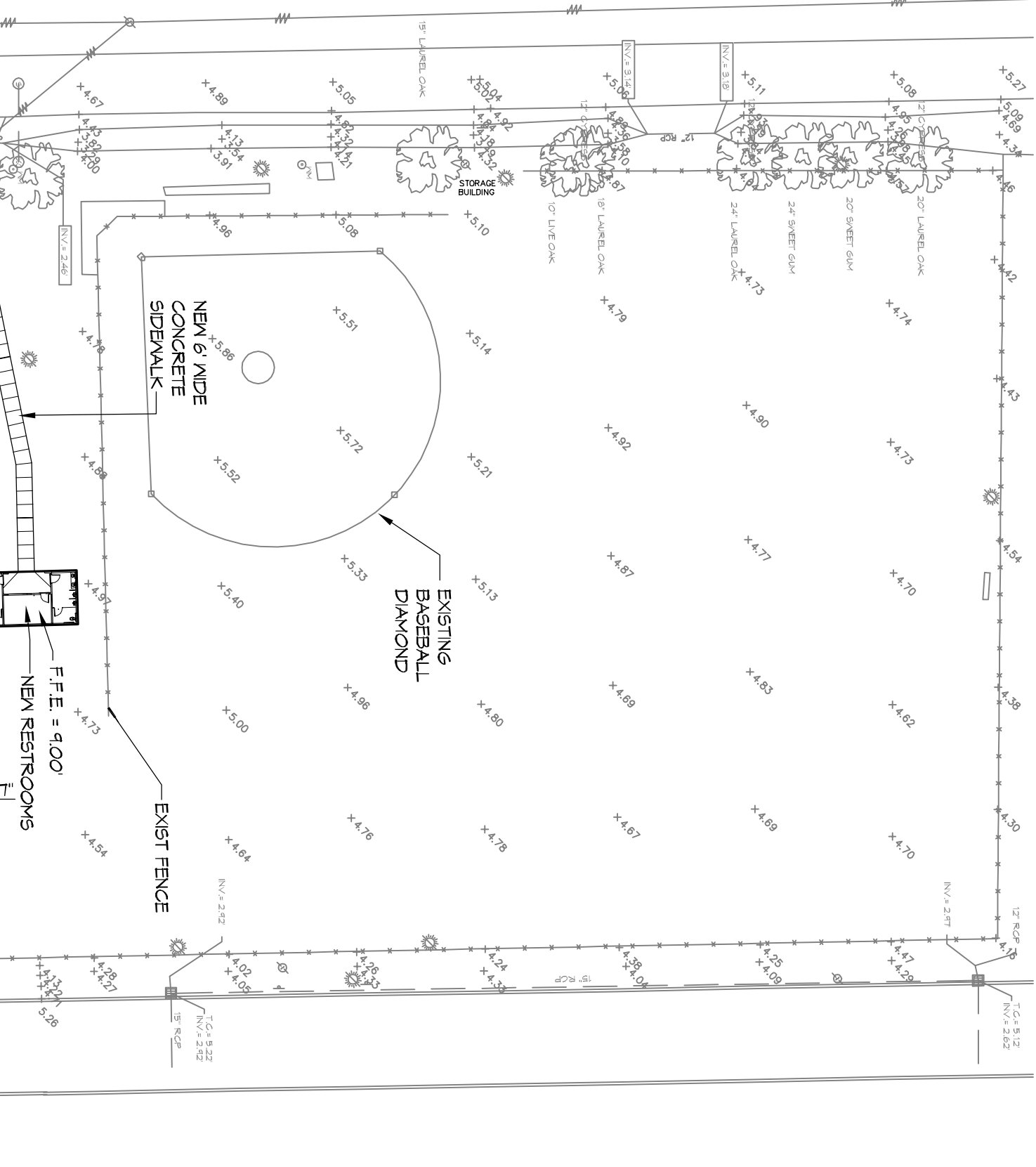
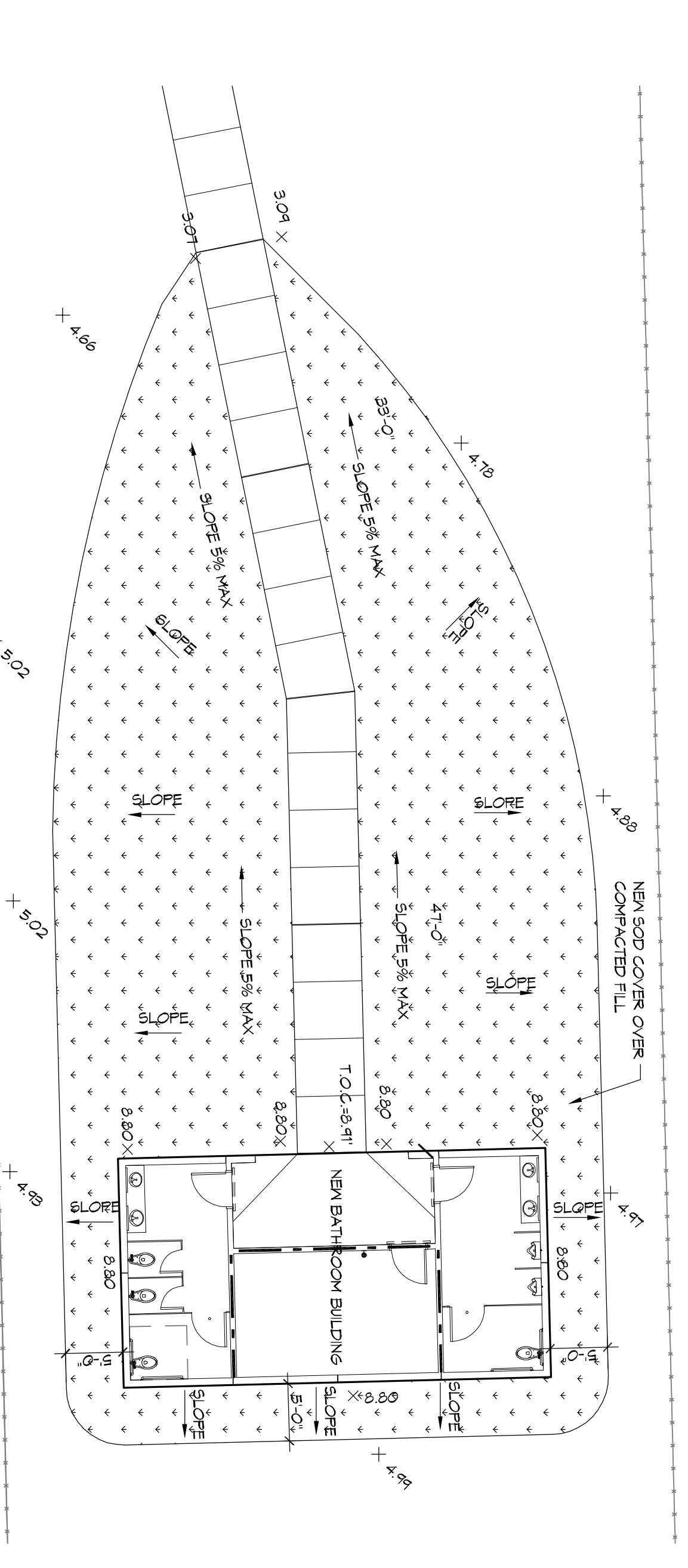
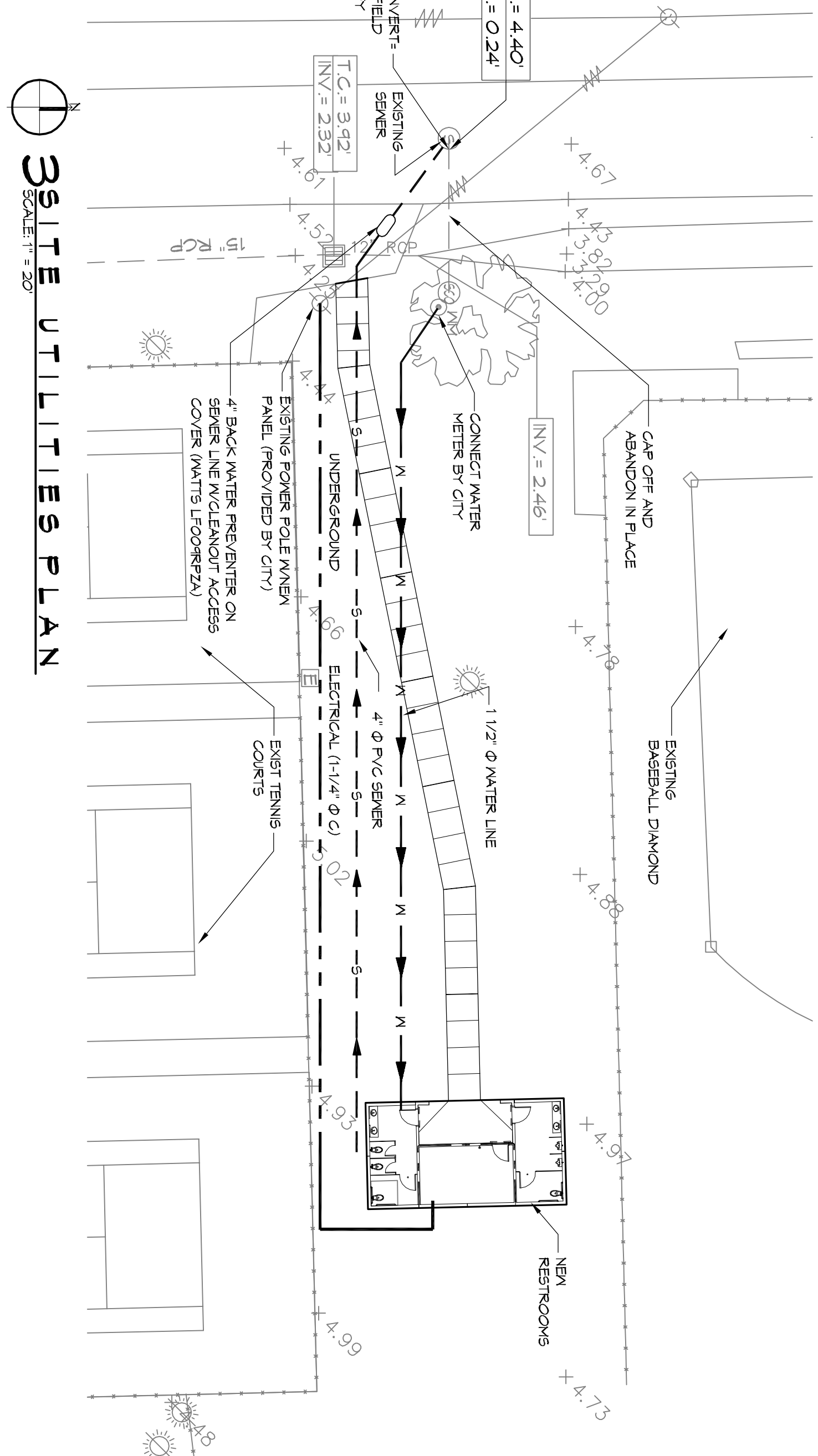
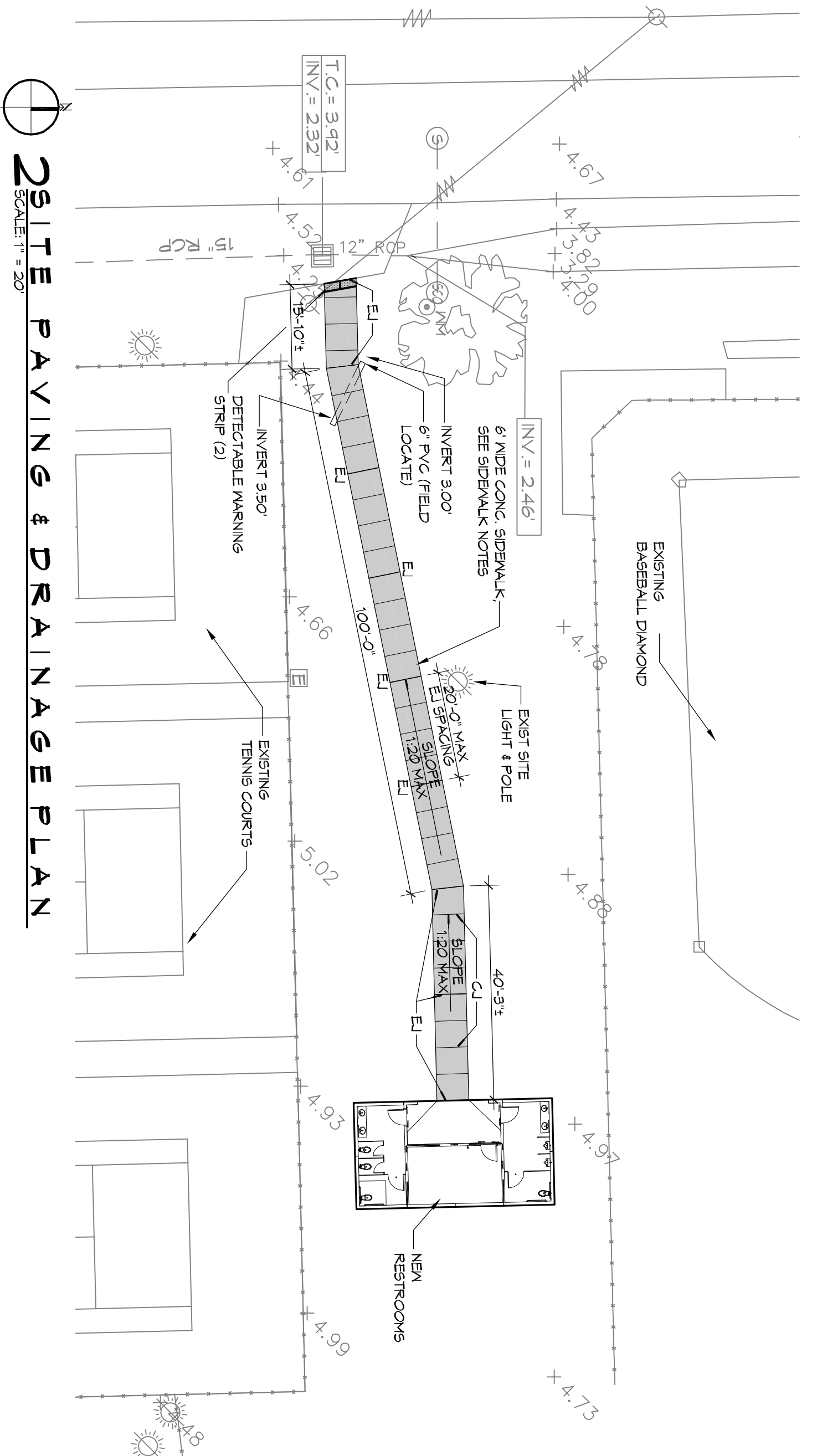
**PLAN**



**SECTION A-A**



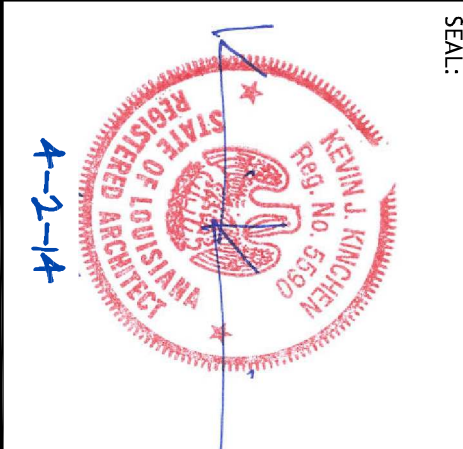
**DETAIL**  
SCALES: TYPICAL CONCRETE SIDEWALK



**SITE LEGEND**

---	- BUILDING OUTLINE
---	- NEW WATER LINE
---	- NEW SEWER LINE
---	- NEW POWER LINE
---	- DETECTABLE MARKING SYSTEM (CAST IN PLACE)

- DRAINAGE NOTES:**
1. DRAIN PIPE & FITTINGS WITH PROPERTY LINE SHALL BE POLYVINTL
  2. CHOOSE PLASTIC PIPE VERTING CLASS 100 C-900 PVC.
  3. ELEVATIONS SHOWN ARE V.S.L.
  4. FIELD VERIFY ALL ELEVATIONS AND DRAINAGE SYSTEM PLACEMENT PRIOR TO START OF WORK.



#	DESCRIPTION	DATE

**DAMMON ENGINEERING, INC.**  
Architects & Engineers

Chief Architect: Kevin J. Kinchen, NCARB  
Chief Engineer: Brian Mistich, PE  
554 Old Spanish Trail  
Slidell, LA 70458

www.dammonengineering.com  
info@dammonengineering.com  
PH: 985.649.5832  
F: 985.641.5930

CITY OF SLIDELL  
2602 2nd STREET  
SLIDELL, LOUISIANA, 70458

JOB NO: 2170 DATE: 4/2/2014  
DRAWN BY: KJK/JTL CHECKED BY: CKD

SHEET TITLE: SITE UTILITIES, SITE PAVING & DRAINAGE PLAN, AND LANDSCAPING PLAN  
DRAWING NUMBER: 61

SHEET NO: 4 OF 8