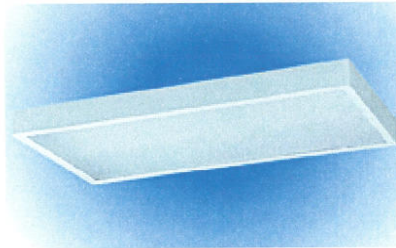


LaMar Lighting
 485 Smith Street
 Farmingdale, NY 11735
 Tel: 631.777.7700 • Fax: 631.777.7705
 Email: sales@lamarlighting.com

All Categories > Lighting by Application > Office Lighting > SB Series Fluorescent Lights > Item # SB.3.32.24.E8.U

Item # SB.3.32.24.E8.U, SB Series Fluorescent Lights



[larger image](#)

Low profile surface or stem mounted luminaire available with a variety of lens or louver options. 1x4, 2x2 and 2x4 sizes in up to four lamps T8, T5 or Biax. Optional high frequency motion sensor (completely enclosed) available on some models - consult factory.

Downloads:

[SPEC SHEET \(PDF\)](#)



PHOTOMETRIC REPORTS:

PDF File	Lamp	Lumens/Lamp	EFF.	S/MH	IES File
SB23222E81PA	F32T8/U6	2750	66.6	1.2/1.3	SB23222E8PA
SB23222E81S1	F32T8/U6	2750	38.9	1.2/1.4	SB23222E8S1
SB23222E81S2	F32T8/U6	2750	85.0	1.2/1.4	SB23222E8S2
SB23222E8109	F32T8/U6	2750	51.4	1.2/1.3	SB23222E809
SB23222E8116	F32T8/U6	2750	58.4	1.2/1.3	SB23222E816
SB33224E81S1	F32T8	2850	42.2	1.2/1.4	SB33224E8S1
SB33224E81S2	F32T8	2850	48.1	1.2/1.4	SB33224E8S2
SB33224E8112	F32T8	2850	67.7	1.2/1.4	SB33224E812
SB33224E8118	F32T8	2850	62.3	1.2/1.4	SB33224E818
SB33224E8124	F32T8	2850	59.8	1.2/1.4	SB33224E824
SB33224E8132	F32T8	2850	63.8	1.2/1.4	SB33224E832

Handwritten notes:
 SB33224E8112
 SB33224E8118
 SB33224E8124
 SB33224E8132
 + CUVV E8112
 Cooper W 432

Specifications

No. Lamps	3
Wattage	32 W
Size	24
Ballast Type	Electronic T8
Voltage	Universal 120 - 277 V

Lens	PA - Prismatic Acrylic A1 - .125" Prismatic Acrylic DD - Drop Dish S1 - Silver .75 x.75" Louver S2 - Silver 1.5 x 1.5" Louver 12 - 1.5" Deep 12 Cell Louver 18 - 1.5" Deep 18 Cell Louver 24 - 1.5" Deep 24 Cell Louver 32 - 1.5" Deep 32 Cell Louver 78 - 1.5" Deep 78 Cell Louver
Lamp Type	F32T8
General Options	HF - High Frequency Motion Sensor EM - Emergency pack, 1 lamp 90 min. up to 500 lumens 2C - 2 Circuit R95 - 95% Reflectance Specular Aluminum Reflector R - 87% Reflectance Specular Aluminum Reflector
Lamp Options	10 - T8 730K 11 - T8 830K 12 - T8 741K 13 - T8 841K 15 - T8 735K 16 - T8 835K
Note	SPECIFICATIONS AND DIMENSIONAL DATA ARE SUBJECT TO CHANGE WITHOUT NOTICE.

[Print](#) [Back](#)

S B
SERIES
PREMIUM
SURFACE
MOUNT
LUMINAIRE

Job Name	
Catalog Number	
Notes	Type



application

- Clean, architecturally appealing unit with superior detailing and finish
- Ideal for commercial and institutional surface mount applications
- Able to be surface or pendant mounted individually or in continuous rows
- Available in numerous sizes and lengths, and various lamp/ballast combinations

finish

- Prior to painting, all metal parts are treated with a multi stage phosphate bonding process to ensure adhesion and inhibit rusting
- Painted with a lighting grade baked white enamel, having a reflectance factor exceeding 87% for premium quality and durability

construction

- The SB series is a premium, low profile, surface mount unit with heavy duty construction for stylish long-term use
- Features durable steel bodies, quality paint finishes and superior electrical components
- Die formed from code gauge cold rolled steel for strength and uniformity.
- Corners are internally overlapped and welded for crisp appearance, no light leakage and rigidity
- Ballast covers easily removed without tools
- Knockouts provided on top of housing for individual surface mounting and convenient wiring; optional stem or continuous row mounting available
- All fixtures are U.L. listed and IBEW union made

electrical

- All electrical components are U.L. listed
- Electronic Class P, thermally protected ballasts standard
- Numerous options are available: see ordering information on back

door & diffuser

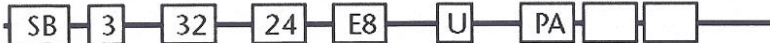
- Latching and hinging is reversible; the doorframe can also be removed without tools
- Low brightness, 100% virgin acrylic clear prismatic lens is standard, consult ordering guide for optional diffusers and louvers
- Standard door is flush white steel
- Standard prismatic lens provides high efficiency with maximum visual comfort and uniform light diffusion.

ordering guide

NOTE: SOME ORDERING OPTIONS APPEAR ON PRODUCT LINE. FOR OTHER OPTIONS, SEE LIST AT RIGHT.

SB SERIES PREMIUM SURFACE MOUNT LUMINAIRE

SAMPLE ORDER NUMBER



SERIES NO. LAMPS WATTAGE SIZE BALLAST TYPE VOLTAGE LENS OPTIONS DIMENSIONS LAMP TYPE

T-12 ORDERING GUIDE										
SB	2	40	14	M2	1, 7	PA			12 3/8" x 48"	F40T12
SB	4	40	14	M2	1, 7	PA			12 3/8" x 48"	F40T12
SB	2	40	22	M2	1, 7	PA			24 3/8" x 24"	FB40T12/6
SB	2	20	22	M2, MP	1, 7	PA			24 3/8" x 24"	F20T12
SB	4	20	22	M2, MP	1, 7	PA			24 3/8" x 24"	F20T12
SB	2	40	24	M2	1, 7	PA			24 3/8" x 48"	F40T12
SB	3	40	24	M2	1, 7	PA			24 3/8" x 48"	F40T12
SB	4	40	24	M2	1, 7	PA			24 3/8" x 48"	F40T12

T-8 ORDERING GUIDE										
SB	2	32	14	E8	1, 7, U	PA			12 3/8" x 48"	F32T8
SB	4	32	14	E8	1, 7, U	PA			12 3/8" x 48"	F32T8
SB	2	32	22	E8	1, 7, U	PA			24 3/8" x 24"	FB32T8/6
SB	2	17	22	E8	1, 7, U	PA			24 3/8" x 24"	F17T8
SB	4	17	22	E8	1, 7, U	PA			24 3/8" x 24"	F17T8
SB	2	32	24	E8	1, 7, U	PA			24 3/8" x 48"	F32T8
SB	3	32	24	E8	1, 7, U	PA			24 3/8" x 48"	F32T8
SB	4	32	24	E8	1, 7, U	PA			24 3/8" x 48"	F32T8

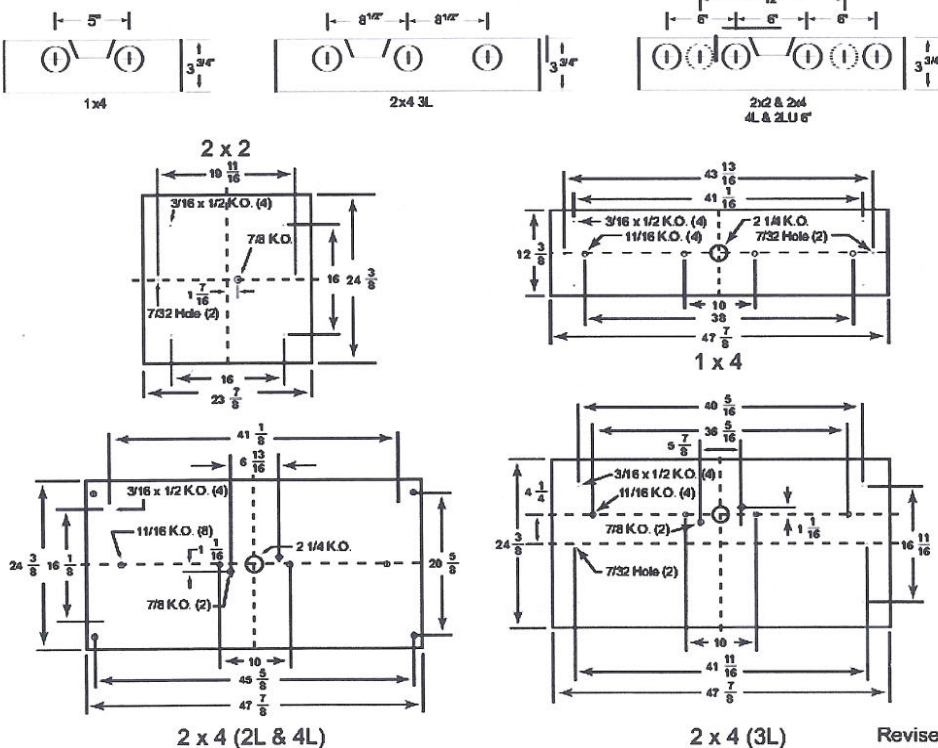
BIAX ORDERING GUIDE										
SB	3	40	22	EB	1, 7, U	PA			24 1/8" x 24"	F40TT

CONSULT FACTORY FOR T5 LAMP OPTIONS

dimensional data

NOTE: SPECIFICATIONS AND DIMENSIONAL DATA ARE SUBJECT TO CHANGE WITHOUT NOTICE.

cross sections and back plans



Revised 10/08

LAMAR LIGHTING 485 Smith Street, Farmingdale, NY 11735 • Tel (631) 777-7700 Fax (631) 777-7705 • Outside NY (800) 724-7743 • www.lamarlighting.com

options

OPTIONS: INSERT APPROPRIATE CODE FOR CUSTOMIZED ORDERING

BALLAST

- E5 Electronic T5
- H5 Electronic T5 HO
- E8 Electronic T8
- EB Electronic bias
- ED Electronic dimming (Consult Factory)

NOTE: In order to achieve rated lamp life, fixtures controlled by motion sensors should be ordered with programmed start ballasts when available and minimum time delay should be set to 15 minutes - Consult Factory

VOLTAGE

- I 120V
- U Universal 120-277V

GENERAL OPTIONS

- EM Emergency pack, 1 lamp 90 min. up to 500 lu.
- 2C 2 Circuit
- R 87% Reflector
- R95 95% Reflector
- HF High frequency occupancy sensor

lens options

- PA Prismatic acrylic
- A1 125" Acrylic Pattern 12
- PC Polycarbonate
- DD Drop dish
- S1 Silver .75 x .75 louver
- S2 Silver 1.5" x 1.5" louver
- 08 1.5" deep 1X4
- 16 8 cell aluminum louver 1.5" deep 1X4
- 09 16 cell aluminum louver 1.5" deep 2X2
- 12 9 cell aluminum louver 1.5" deep 2x2 or 2x4
- 16 12 cell aluminum louver 1.5" deep 2x2
- 18 16 cell aluminum louver 1.5" deep 2x4
- 24 18 cell aluminum louver 1.5" deep 2x4
- 32 24 cell aluminum louver 1.5" deep 2x4
- 78 32 cell aluminum louver 1.5" deep 2x4
- 78 78 cell aluminum louver

accessories

- WG Wireguard

LAMP OPTIONS

- 12 T8 741K
- 15 T8 735K
- 10 T8 730K
- 13 T5/T8 841K
- 16 T5/T8 835K
- 11 T5/T8 830K

