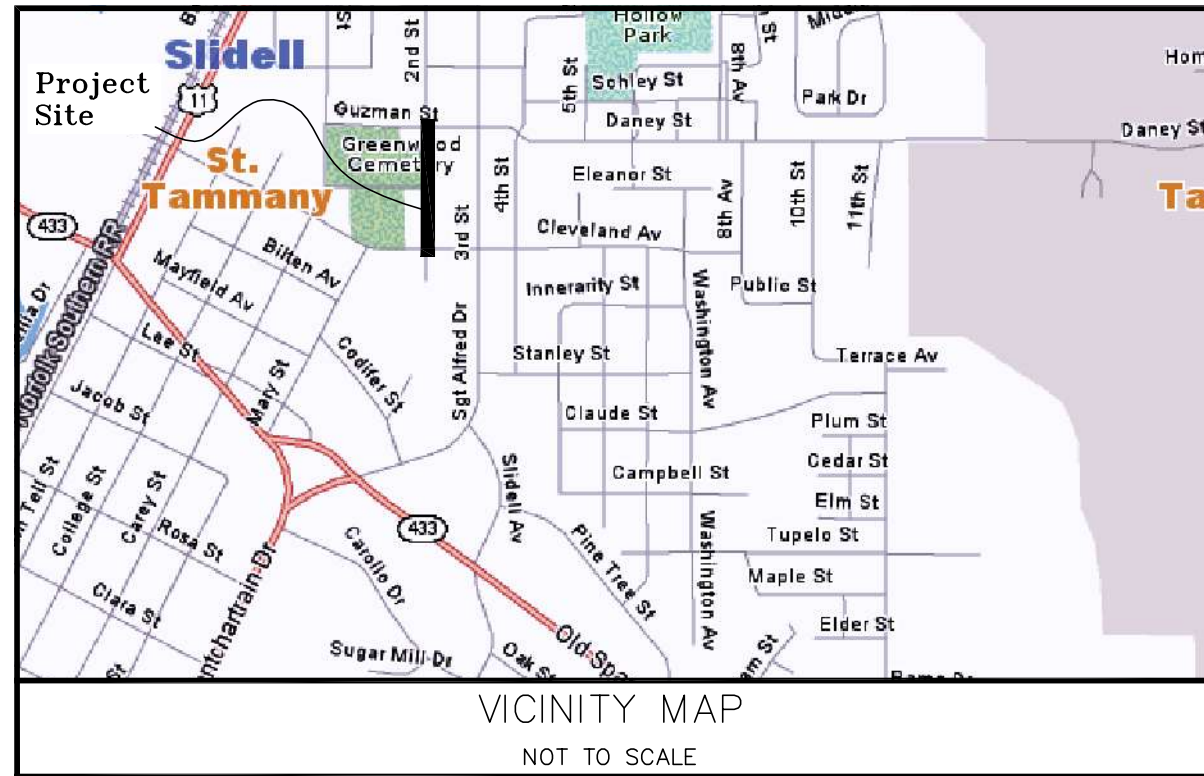
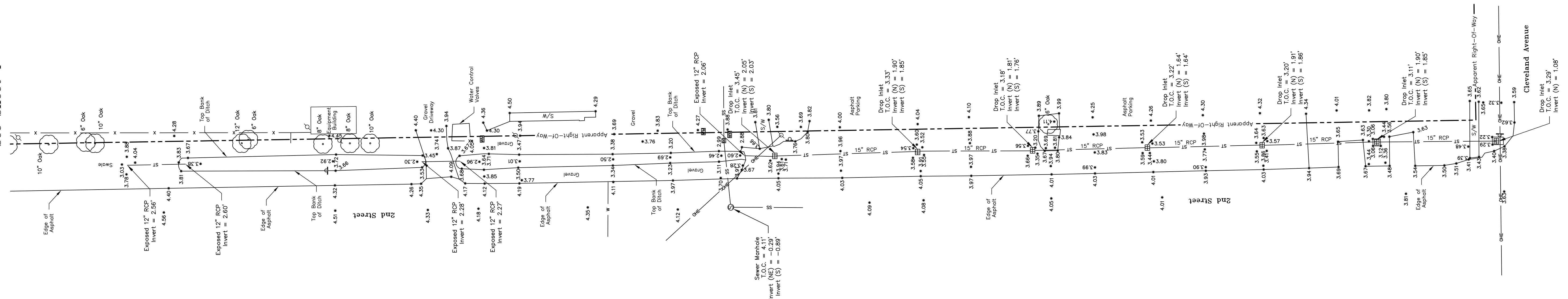


TOPOGRAPHIC SURVEY



See Sheet 4



The Henry J. Guzman Tennis Center

GENERAL NOTES

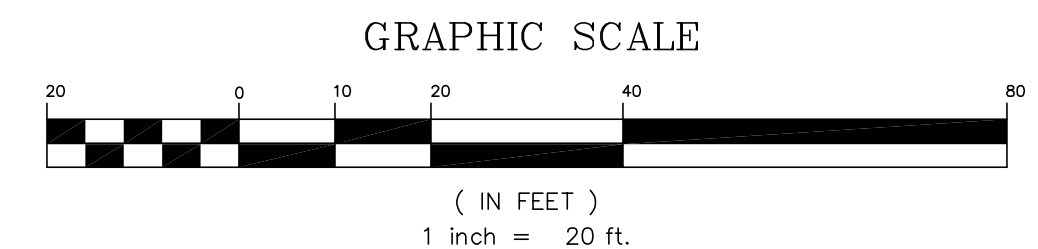
1. THE LOCATION OF EXISTING UTILITIES ARE SHOWN IN AN APPROXIMATE WAY ONLY. THEY WERE NOT EXCAVATED TO BE ACCURATELY LOCATED. CALL LOUISIANA ONE CALL 811 BEFORE DIGGING.
2. SERVITUDES SHOWN HEREON ARE NOT NECESSARILY EXCLUSIVE. SERVITUDES OF RECORD AS SHOWN ON TITLE OPINION OR TITLE POLICY WILL BE ADDED HERETO UPON REQUEST, AS SURVEYOR HAS NOT PERFORMED ANY TITLE SEARCH OR ABSTRACT.
3. THE PROPERTY IS LOCATED WITHIN FLOOD ZONE "AB" WITH A BASE OF 9' ACCORDING TO THE FEDERAL EMERGENCY MANAGEMENT AGENCY (FEMA) FLOOD INSURANCE RATE MAP (FIRM) COMMUNITY PANEL NO. 220204 0010 C MAP DATED/REVISED: APRIL 21, 1999 .
4. SETBACK LINES SHALL BE VERIFIED BY OWNER OR CONTRACTOR PRIOR TO ANY CONSTRUCTION, AS AN ABSTRACT HAS NOT BEEN PERFORMED BY THE UNDERSIGNED.
5. THIS SURVEY WAS DONE ON THE GROUND UNDER MY DIRECT SUPERVISION AND CONTROL AND FOUND NO ENCROACHMENTS ON THE SUBJECT PROPERTY UNLESS OTHERWISE SHOWN.
6. POSITIONAL ACCURACY OF FOUND MONUMENTS ARE WITHIN DIMENSIONAL TOLERANCES IN ACCORDANCE WITH THE MINIMUM STANDARDS OF A CLASS C SURVEY UNLESS OTHERWISE NOTED.
7. ELEVATIONS SHOWN ON THIS SURVEY ARE BASED ON THE NORTH AMERICAN VERTICAL DATUM OF 1988 (NAVD88) UTILIZING GEOID (2012A). THEY ARE DERIVED FROM GPS OBSERVATIONS REFERENCED TO THE LOUISIANA STATE UNIVERSITY CONTINUOUSLY OPERATING REFERENCE STATIONS NETWORK IN ACCORDANCE WITH LOUISIANA R.S. 50:173.1 COVERING VERTICAL CONTROL STANDARDS.
8. NORTH SHOWN ON THIS SURVEY WAS DERIVED FROM GPS OBSERVATIONS REFERENCED TO THE LSU CONTINUOUSLY OPERATING REFERENCE STATIONS NETWORK USING LA SOUTH ZONE 1702 NAD 83.

LEGEND

- ⊙ = WATER VALVE
- W— = WATER LINE
- WM = WATER METER
- WM = WATER MANHOLE
- ⊙ = FIRE HYDRANT
- ⊙ = GAS VALVE
- GM = GAS METER
- G— = GAS LINE
- GM = GAS MANHOLE
- ⊙ = GAS SIGN
- ⊙ = POWER POLE
- OHE— = OVERHEAD ELECTRIC LINE
- ← = GUY ANCHOR
- ⊙ = LIGHT POLE
- UGE— = UNDERGROUND ELECTRIC LINE
- E = ELECTRIC BOX
- SB = LIGHT SIGNAL BOX
- UT— = UNDERGROUND TELEPHONE
- ⊙ = TELEPHONE MANHOLE
- T = TELEPHONE PEDESTAL
- TP = TELEPHONE PEDISTAL
- FI = FIBER OPTIC MARKER
- ST— = DRAINAGE LINE
- |||| = GRATE INLET
- ⊙ = DRAIN MANHOLE
- ⊙ = SEWER MANHOLE
- SS— = SEWER LINE
- SC = SEWER CLEAN OUT
- X— = FENCE LINE
- * 0.00 = SPOT ELEVATION
- ⊙ = TREE
- ⊙ = SIGN
- MB = MAIL BOX
- = RIGHT-OF-WAY LINE



FRANCIS FORTIER, P.L.S. 4769
 I CERTIFY THAT THIS PLAT REPRESENTS AN ACTUAL GROUND SURVEY MADE BY ME OR UNDER MY DIRECT SUPERVISION, AND IT DOES CONFORM TO THE REQUIREMENTS FOR THE MINIMUM STANDARDS FOR PROPERTY BOUNDARY SURVEYS AS FOUND IN LOUISIANA ADMINISTRATIVE CODE TITLE 46: LXI, CHAPTER 25 FOR A CLASS "C" SURVEY AND IS IN ACCORDANCE WITH THE PROVISION OF LRX 22 et seq.
 SURVEY MADE AT THE REQUEST OF AND CERTIFIED TO:
City of Slidell



MARK	DESCRIPTION	REVISION RECORD	DATE	BY	CHKD

SCALE:	1" = 20'
DATE:	03-02-16
DRAWN BY:	JBM
CHECKED BY:	JBM
PROJECT NO.	16-006
DRAWING NO.	16-006
SHEET	OF
3	4

