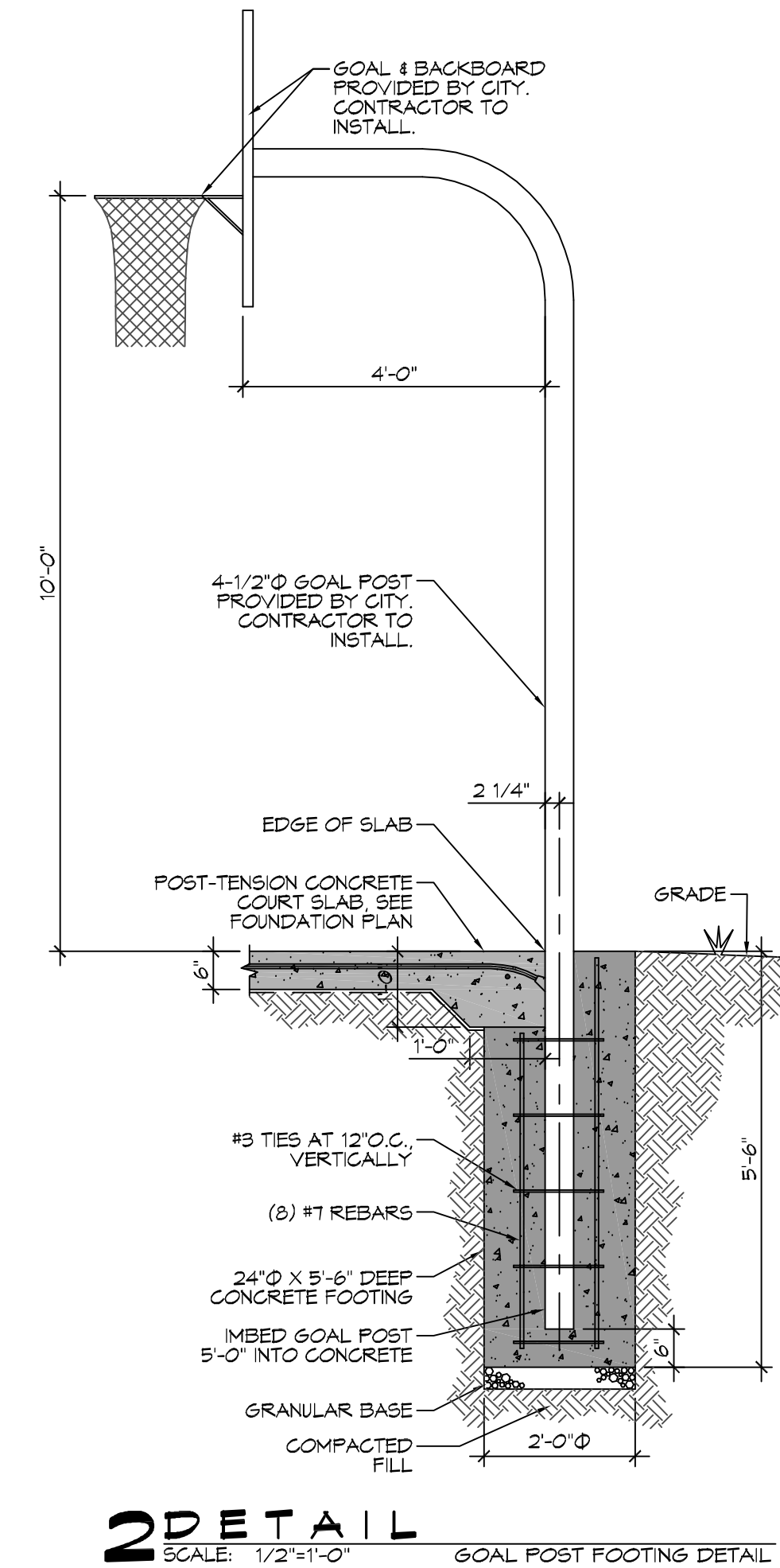
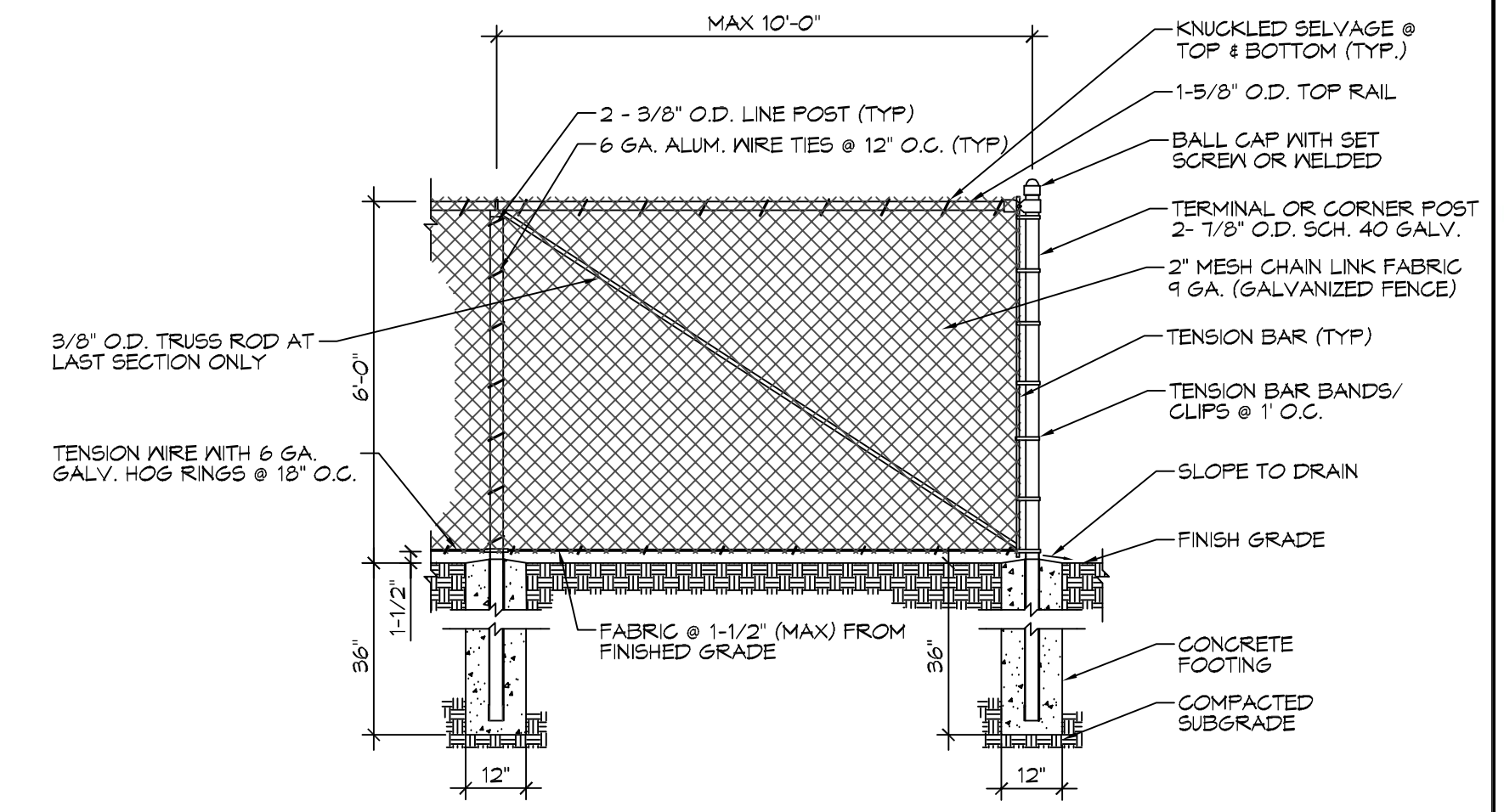
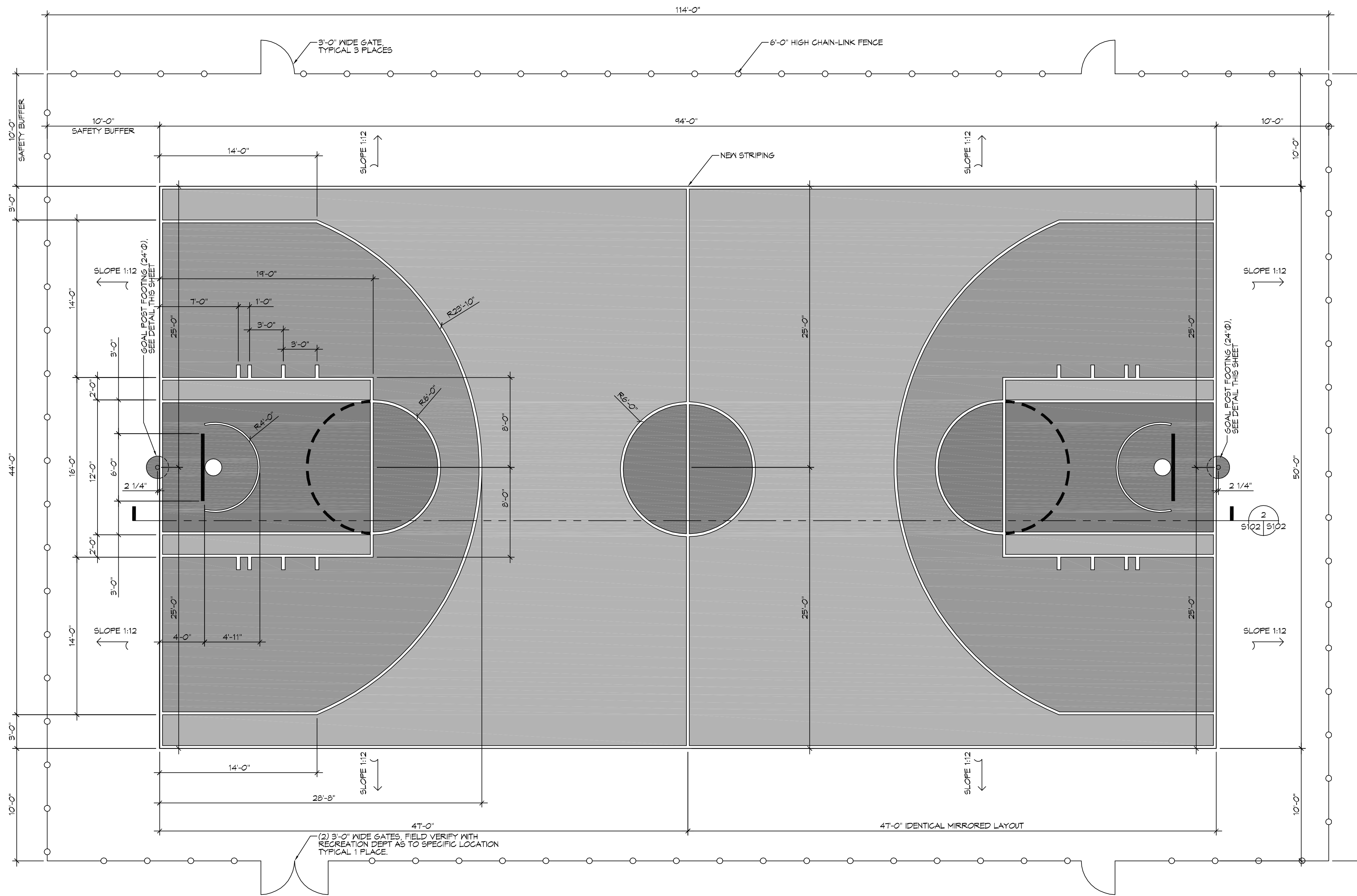


FILE NAME: J:_Government\City of Slidell\101 - POSSUM HOLLOW PARK BASKETBALL COURT\101 - Basketball Court Plan.dwg, DATE: 08/20/16, 10:23:24 AM



DAMMON ENGINEERING, INC.
LOUISIANA & MISSISSIPPI

Chief Engineer: Brian March, PE
554 Old Spanish Trail
Slidell, LA 70458
PH: 985.649.5832 F: 985.641.5950
www.dammonengineering.com
info@dammonengineering.com

#	DESCRIPTION	DATE

PRELIMINARY NOT FOR CONSTRUCTION

BASKETBALL COURT
POSSUM HOLLOW
PARK

SHEET TITLE:
BASKETBALL COURT PLAN

DRAWING NUMBER:

S101

SHEET No: 2 of 3

DATE: 12/06/2016
DRAWN BY: CJK/JTL
CHECKED BY: BAM
JOB No: 2271
501 COUSIN STREET
SLIDELL, LA 70458

