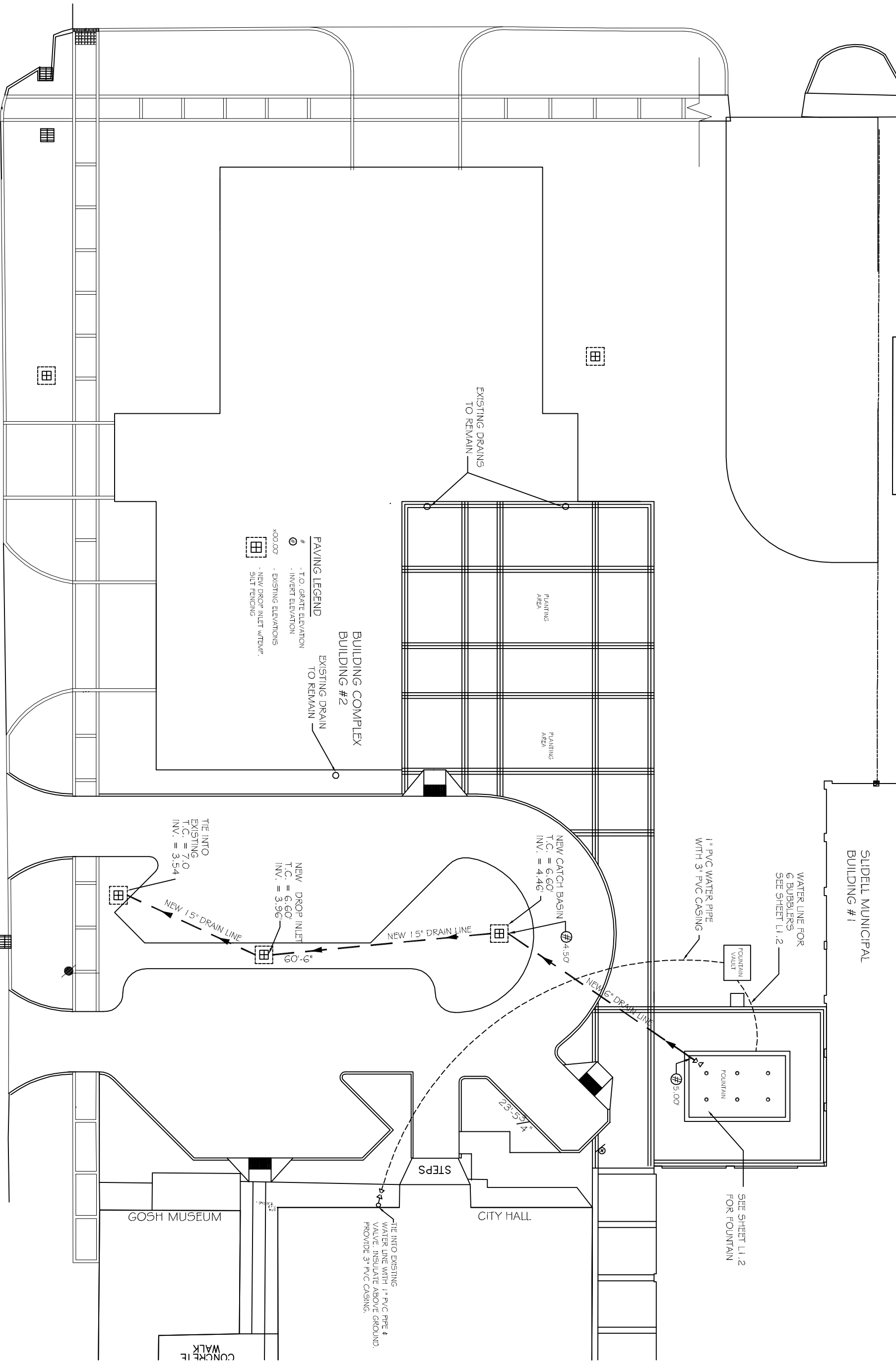


1ST STREET



**PAVING LEGEND**  
 # - T.O. GRATE ELEVATION  
 ○ - INVERT ELEVATION  
 x00.00' - EXISTING ELEVATIONS  
 □ - NEW DROP INLET W/TEMP. SILT FENCING

**BUILDING COMPLEX BUILDING #2**  
 EXISTING DRAIN TO REMAIN

EXISTING DRAINS TO REMAIN

PLANTING AREA

PLANTING AREA

WATER LINE FOR 6 BUBBLERS SEE SHEET L1.2  
 1" PVC WATER PIPE WITH 3" PVC CASING

FOUNTAIN VAULT

SEE SHEET L1.2 FOR FOUNTAIN

SLIDELL MUNICIPAL BUILDING #1

TIE INTO EXISTING T.C. = 7.0 INV. = 3.54

NEW DROP INLET T.C. = 6.60 INV. = 3.96

NEW CATCH BASIN T.C. = 6.60 INV. = 4.46

T.C. = 5.44 INV. = 4.94  
 BOUS CAREN STREET

TIE INTO EXISTING WATER LINE WITH 1" PVC PIPE & VALVE. INSULATE ABOVE GROUND. PROVIDE 3" PVC CASING.

CITY HALL

GOSH MUSEUM

CONCRETE WALK

STEPS

23'-5 3/4"

DRAINAGE & WATER PLAN

SCALE: 1" = 10'



REVISIONS		DATE
#	DESCRIPTION	

**CITY HALL PARKING LOT & COURTYARD**  
 BOUS CAREN STREET  
 SLIDELL, LA

JOB No: 2172    DATE: 05-30-13  
 DRAWN BY: CKD    CHECKED BY: CKD



**DAMMON ENGINEERING, INC.**  
 Architects & Engineers

CHIEF ENGINEER: EMMETT DAMMON, P.E.  
 CHIEF ARCHITECT: KEVIN KINCHEM  
 554 OLD SPANISH TRAIL  
 SLIDELL, LA 70458

dammoneng@att.net  
 dammoneng@slidell.la.net  
 PHONE: 905-649-5832  
 FAX: 905-641-5950

C2

SHEET No: 3 OF 11

DRAINAGE & WATER PLAN