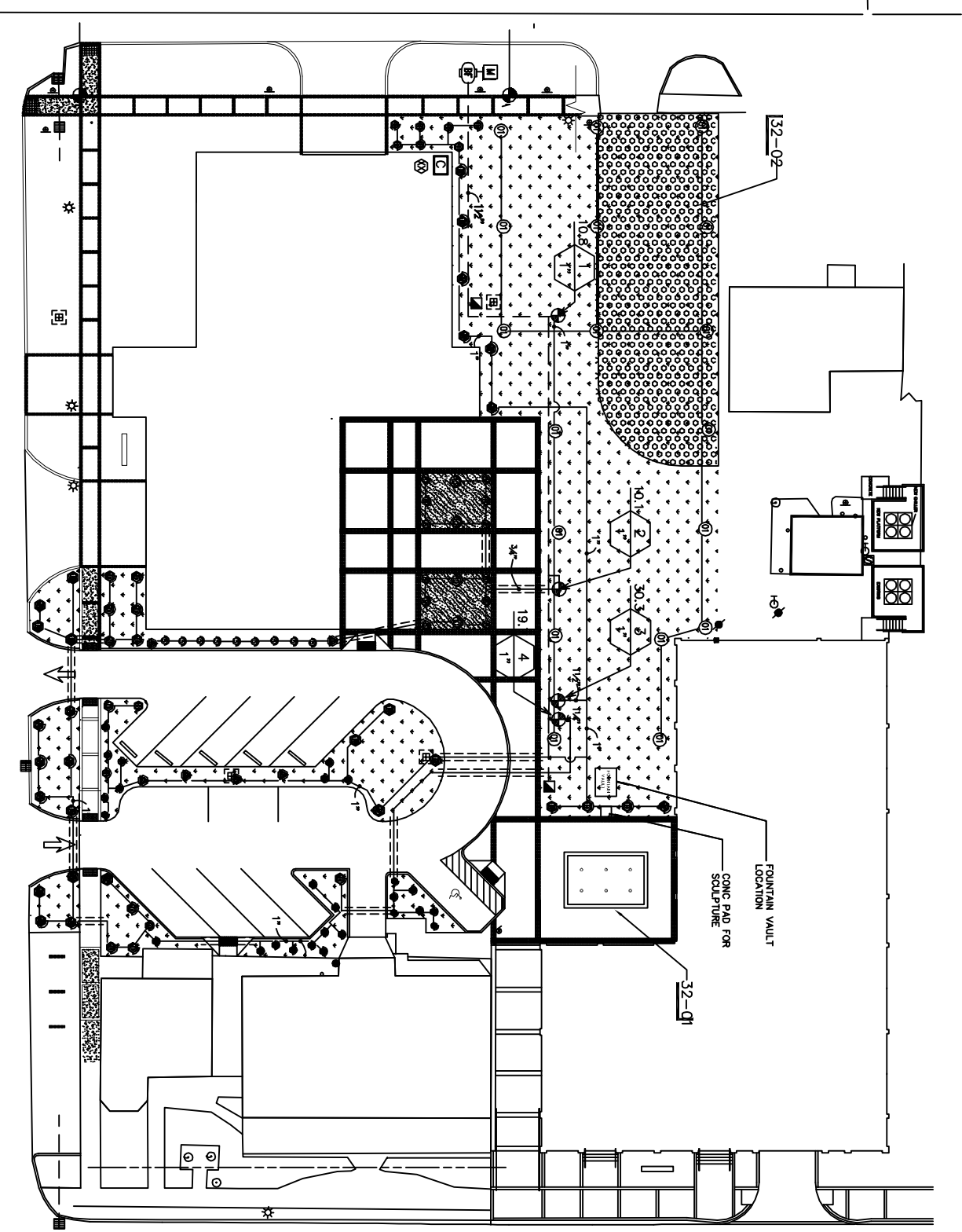


IRRIGATION SCHEDULE

SYMBOL	MANUFACTURER/MODEL/DESCRIPTION	QTY	PSI	DETAIL
⊙	Turf Spray 6.0" Pop-Up Sprinkler with Co-Molded Wiper Seal, Side and Bottom Inlet, 1/2" NPT Female Threaded Inlet.	Rain Bird 1806 15 Strip Series	6	30
⊙	Turf Spray 6.0" Pop-Up Sprinkler with Co-Molded Wiper Seal, Side and Bottom Inlet, 1/2" NPT Female Threaded Inlet.	Rain Bird 1806 5 Series MPR	26	30
⊙	Turf Spray 6.0" Pop-Up Sprinkler with Co-Molded Wiper Seal, Side and Bottom Inlet, 1/2" NPT Female Threaded Inlet.	Rain Bird 1806 8 Series MPR	8	30
⊙	Turf Spray 6.0" Pop-Up Sprinkler with Co-Molded Wiper Seal, Side and Bottom Inlet, 1/2" NPT Female Threaded Inlet.	Rain Bird 1806 10 Series MPR	13	30
⊙	Turf Spray 6.0" Pop-Up Sprinkler with Co-Molded Wiper Seal, Side and Bottom Inlet, 1/2" NPT Female Threaded Inlet.	Rain Bird 1806 12 Series MPR	8	30
⊙	Turf Spray 6.0" Pop-Up Sprinkler with Co-Molded Wiper Seal, Side and Bottom Inlet, 1/2" NPT Female Threaded Inlet.	Rain Bird 1806 15 Series MPR	8	30
⊙	Turf Spray 6.0" Pop-Up Sprinkler with Co-Molded Wiper Seal, Side and Bottom Inlet, 1/2" NPT Female Threaded Inlet.	Rain Bird 1806 ADJ	11	30
⊙	Turf Spray 6.0" Pop-Up Sprinkler with Co-Molded Wiper Seal, Side and Bottom Inlet, 1/2" NPT Female Threaded Inlet.	Rain Bird 1806 ADJ	2	30
⊙	Turf Spray 6.0" Pop-Up Sprinkler with Co-Molded Wiper Seal, Side and Bottom Inlet, 1/2" NPT Female Threaded Inlet.	Rain Bird 1806 5 Series MPR	9	30
⊙	Shrub Spray 6.0" Pop-Up Sprinkler with Co-Molded Wiper Seal, Side and Bottom Inlet, 1/2" NPT Female Threaded Inlet.	Rain Bird 1806 8 Series MPR	12	30
⊙	Shrub Spray 6.0" Pop-Up Sprinkler with Co-Molded Wiper Seal, Side and Bottom Inlet, 1/2" NPT Female Threaded Inlet.	Rain Bird 1806 10 Series MPR	4	30
⊙	Turf Rotor, 4.0" Pop-Up, Adjustable and Full Circle, Standard Angle Red Nozzle, Lower Precipitation Rate.	Hunter PGP-ADJ 18	40	0.60 29'
⊙	1" - 1-1/2" 2" Electric Remote Control Valve, Angle.	Rain Bird PGA Angle	4	DETAIL
⊙	3/4" Brass Quick-Coupling Valve, with Corrosion-Resistant Stainless Steel Spring Thermoplastic Rubber Cover, and 1-Piece Body.	Rain Bird 3-RC	2	
⊙	Pressure Vacuum Breaker, brass with ball valve SOV, install 12" (305MM) above highest downstream outlet and the highest point in the downstream piping.	Fabco 765 1-1/2"	1	
⊙	4. Station, Hybrid Modular, Outdoor Controller, For Residential or Light Commercial Applications.	Rain Bird ESPAME 1		
⊙	Valve Callout	Rain Bird RSD-BEX	1	
⊙	Valve Number	Water Meter 1-1/2"	1	
⊙	1,839 L.F.	Irrigation Lateral Line: PVC Class 200 SDR 21		
⊙	PVC Class 200 Irrigation pipe, Only lateral transition pipe sizes 1" and above are indicated on the plan, with all others being 3/4" in size.	Irrigation Mainline: PVC Schedule 40 252.0 L.F.		
⊙	PVC Schedule 40 Irrigation pipe.			



PLANTING PLAN
SCALE: 1"=20'-0"

VALVE SCHEDULE

NUMBER	MODEL	SIZE	TYPE	WIRE	PSI	PSI @ POC	GMW	PRECIP
1	Rain Bird PGA Angle	1"	Turf Rotor	107.0	46.58	49.62	10.80	0.17 in/h
2	Rain Bird PGA Angle	1"	Shrub Spray	185.4	36.95	40.16	10.10	1.09 in/h
3	Rain Bird PGA Angle	1"	Turf Spray	217.2	40.94	50.81	30.26	0.96 in/h
4	Common Wire	1"	Turf Spray	222.8	41.91	47.70	19.72	1.12 in/h

REFERENCE NOTES SCHEDULE

- 32-01 3/2 EXTERIOR IMPROVEMENTS QTY DETAIL
- 32-02 Fountain shall be design build by contractor and dimensioned as shown with 24" high seatwall surround. Seatwall / surround shall have concrete cap. Fountain shall feature six (6) bubbler type. Final design shall be submitted to landscape architect for approval. nozzles to create a min. 3h jet.
- 32-03 Grasspaw2 by manufacturer. See detail 3/11.1

CRITICAL ANALYSIS

Generated: 2013-04-08 15:25
 P.O.C. NUMBER: 01 Mike Noto - 985-290-7388
 WATER SOURCE INFORMATION: Mike Noto - 985-290-7388
 FLOW AVAILABLE: 1-1/2" 75.00 gpm
 WATER METER SIZE: 1-1/2" 75.00 gpm
 FLOW AVAILABLE: 75.00 gpm
 PRESSURE AVAILABLE: 65.00 psi
 STATIC PRESSURE AT POC: 5.00 ft
 ELEVATION CHANGE: 2'
 SERVICE LINE SIZE: 2.000 ft
 LENGTH OF SERVICE LINE: 62.00 ft
 PRESSURE AVAILABLE: 30.26 psi
 DESIGN ANALYSIS: 30.26 psi
 MAXIMUM STATION FLOW: 75.00 gpm
 FLOW AVAILABLE AT POC: 44.74 gpm
 RESIDUAL FLOW AVAILABLE: 30.00 psi
 DESIGN PRESSURE: 30.00 psi
 LOSS THROUGH VALVE: 4.90 psi
 LOSS THROUGH FITTING: 0.49 psi
 LOSS THROUGH PIPE: 5.55 psi
 PRESSURE REQ. AT CRITICAL STATION: 40.94 psi
 LOSS FOR MAIN LINE: 0.49 psi
 LOSS FOR POC TO VALVE ELEVATION: 4.93 psi
 LOSS FOR BACKFLOW: 2.81 psi
 CRITICAL STATION PRESSURE: 50.41 psi
 PRESSURE AVAILABLE AT POC: 62.00 psi
 RESIDUAL PRESSURE AVAILABLE: 11.19 psi

Eric R. McQuiston L.L.C.
 Landscape Architecture

DAMMON
 ENGINEERING, INC.
 Architects & Engineers

CHIEF ENGINEER: EMMETT DAMMON, P.E.
 CHIEF ARCHITECT: KEVIN KINCHEN
 554 OLD SPANISH TRAIL
 SUDELL, LA 70450

dammoneng@eng.com
 dammoneng@bellsouth.net
 PHONE: 905-649-5032
 FAX: 905-641-9930

CITY HALL PARKING LOT & COURTYARD
 BROUCAREN STREET
 SUDELL, LA

JOB No:	2172	DATE:	05-30-13
DRAWN BY:	ERM	CHECKED BY:	

REVISIONS

#	DESCRIPTION	DATE

LANDSCAPE IRRIGATION PLAN
 SHEET No: 9 OF 11
L1.2