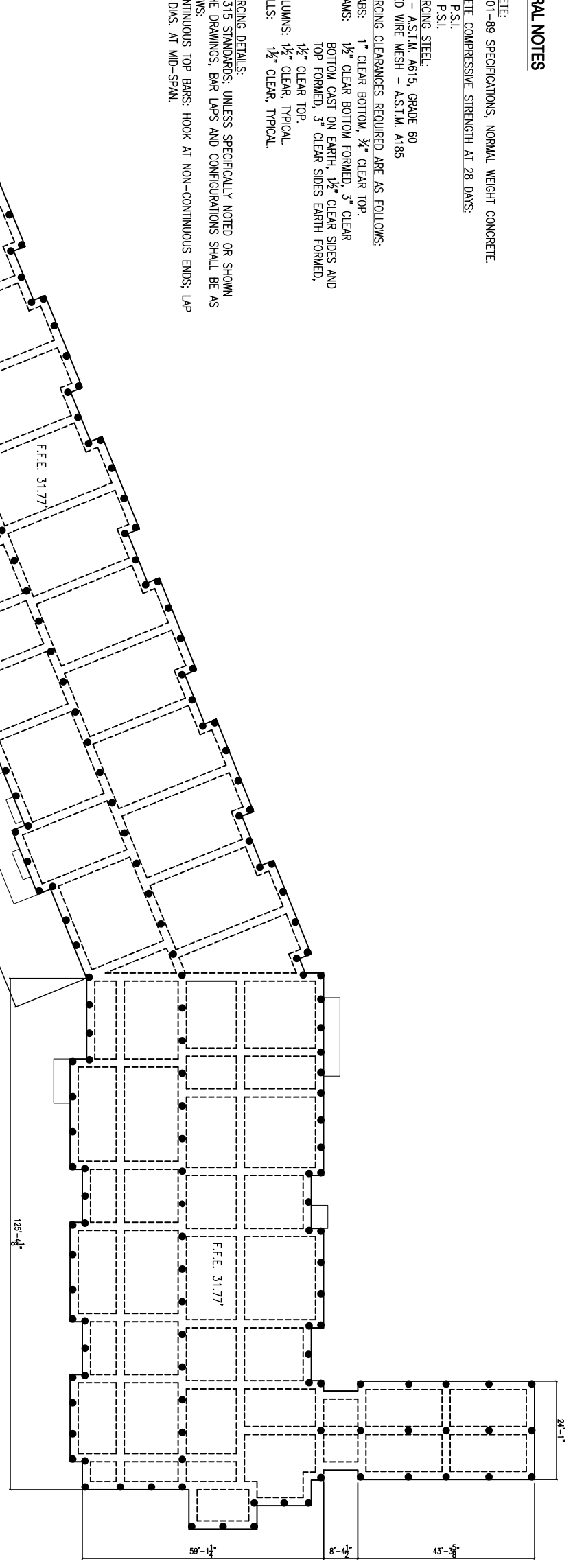
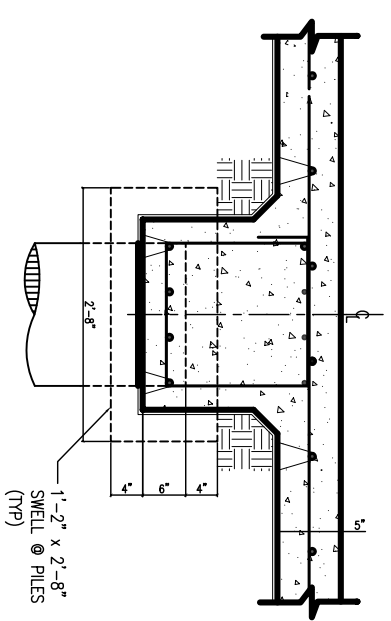


GENERAL NOTES

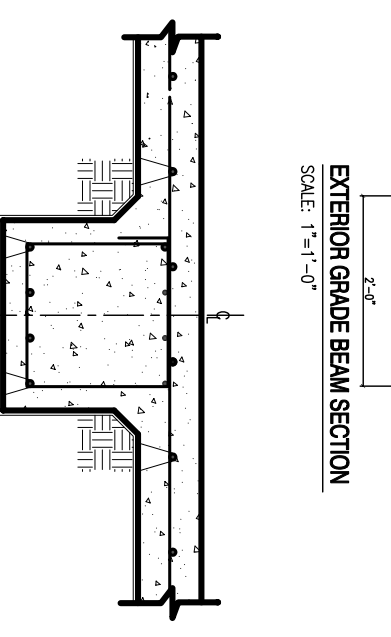
1. CONCRETE:
A.C.I. 301-89 SPECIFICATIONS, NORMAL WEIGHT CONCRETE.
2. CONCRETE COMPRESSIVE STRENGTH AT 28 DAYS:
4,000 P.S.I.
3. REINFORCING STEEL:
BARS - A.S.T.M. A615, GRADE 60
WELDED WIRE MESH - A.S.T.M. A185
4. REINFORCING CLEARANCES REQUIRED ARE AS FOLLOWS:
A. SLABS: 1" CLEAR BOTTOM, 3/4" CLEAR TOP.
B. BEAMS: 1/2" CLEAR BOTTOM FORMED, 3" CLEAR BOTTOM CAST ON EARTH, 1/2" CLEAR SIDES AND TOP FORMED, 3" CLEAR SIDES EARTH FORMED, 1/2" CLEAR TOP.
C. COLUMNS: 1/2" CLEAR, TYPICAL.
D. WALLS: 1/2" CLEAR, TYPICAL.
5. REINFORCING DETAILS:
A.C.I. 315 STANDARDS: UNLESS SPECIFICALLY NOTED OR SHOWN ON THE DRAWINGS, BAR LAPS AND CONFIGURATIONS SHALL BE AS FOLLOWS:
A. CONTINUOUS TOP BARS: HOOK AT NON-CONTINUOUS ENDS; LAP 30 DIAS. AT MID-SPAN.



FOUNDATION PLAN
SCALE: 1/16"=1'-0"



PILE CAP SECTION
SCALE: 1"=1'-0"



EXTERIOR GRADE BEAM SECTION
SCALE: 1"=1'-0"

ALL INTERIOR GRADE BEAM MATERIALS AND DIMENSIONS ARE SIMILAR TO SECTION A
INTERIOR GRADE BEAM
SCALE: 1"=1'-0"

LEGEND
● PILING, TOTAL 210

SYMBOL	DESCRIPTION	DATE	APPROVED

NAVFLAC

DAMMON ENGINEERING, INC.
ENGINEER - CIVIL/ARCHITECT
DAMMON P.E.
1095 FLORIDA AVENUE
SUITE LL, LA 70438
(985) 848-5832
www.de.az.us

DES: F. DAMMON
ENGINEER: S.M. B. NIMMO/KOCHI
REVIEWED BY: R. WITZEL
PAI/DIR: F. DAMMON
CHIEF ENG./ARCH: F. DAMMON

DEPARTMENT OF THE NAVY
NAVAL FACILITIES ENGINEERING COMMAND
NAVAL FACILITIES ENGINEERING COMMAND SOUTHEAST
IPT GULF COAST
GULFPORT, MISSISSIPPI

NAVY LODGE, NCBC GULFPORT
FOUNDATION PLAN

CODE ID. NO. SIZE: D
SCALE: AS SHOWN
DRAWING NO. #####
STA. PROJ. NO. #####
WORK ORDER NO. #####
CONSTR. CONTR. NO. #####
NAVFAC DRAWING NO. #####
SHEET OF

S1.1

DRAWING REVISION: 01 JAN 2009