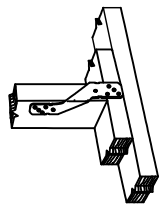
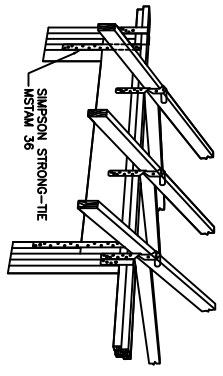


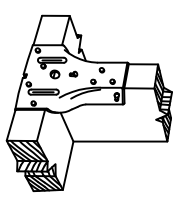
TOP PLATE TO RAFTER DETAIL



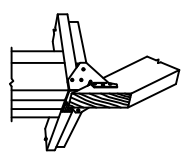
STUD TO TOP PLATE DETAIL



HEADER TO TOP PLATE DETAIL



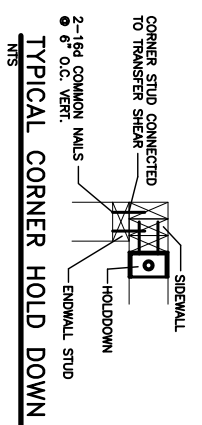
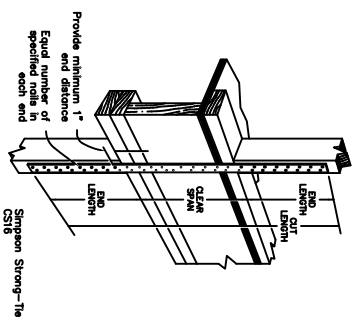
STUD TO SOLE PLATE DETAIL



HIP CORNER PLATE DETAIL



STUD TO STUD



SHEARWALL HOLD DOWNS

HEADER NAILING SCHEDULE			
DESCRIPTION	NUM. OF COM. NAILS	NUM. OF BOX NAILS	SPACING
HEAD TO HEAD (FACE-NAILED)	8d	10d	6" O.C. EDGES/ 12" O.C. FIELD
SOLID BLOCKING REQ'D FOR ALL HEADERS			

WALL SHEATH. OR CLAD. REQ. FOR WIND LOAD-EXP. B

SHEATHING LOCATION	STUD SPAC.	MAX. NAIL SPAC. FOR 8d COM. NAILS OR 10d BOX NAILS (INCHES, O.C.)	E	F
INTERIOR ZONE	12" O.C.	6	6	12
PERIMETER EDGE ZONE	12" O.C.	6	6	12
	16" O.C.	6	6	12
	24" O.C.	6	6	12

ROOF SHEATH. OR CLAD. REQ. FOR WIND LOAD-EXP. B

ROOF SHEATHING LOCATION	RAFTER/TRUSS SPAC.	MAX. NAIL SPAC. FOR 8d COM. NAILS OR 10d BOX NAILS (INCHES, O.C.)	E	F
INTERIOR ZONE	12" O.C.	6	6	12
PERIMETER EDGE ZONE	12" O.C.	6	6	12
	16" O.C.	6	6	12
	24" O.C.	6	6	12

HEADER SPANS-EXPOSURE B FOR EXTERIOR LOADBEARING WALLS

HEADER SIZE	SPAN	NO. FULL HGT. STUDS REQ. AT EA. END
(2)2x4'S	4'-7"	2
(2)2x6'S	5'-6"	3
(2)2x8'S	6'-1"	3
(2)2x10'S	7'-1"	3
(2)2x12'S	8'-3"	3
(3)2x10'S	8'-3"	3
(3)2x12'S	8'-8"	3
(4)2x8'S	8'-7"	3
(4)2x10'S	9'-6"	4
(4)2x12'S	10'-0"	4

WINDBORNE DEBRIS PROTECTION FASTENING SCHEDULE FOR WOOD STRUCTURAL PANELS				
FASTENER TYPE	FASTENER SPACING			
	2-1/2" #8 WOOD SCREWS	PANEL SPAN ≤ 4 FOOT	PANEL SPAN ≤ 6 FOOT	PANEL SPAN ≤ 8 FOOT
2-1/2" #8 WOOD SCREWS	16"	16"	12"	9"

THERMAL COMPONENT CRITERIA (U-FACTOR AND R-VALUE)						
MAX. GLAZING U-FACTOR	MINIMUM INSULATION R-VALUE					
	.75	CEILING	WALLS	FLOORS	BASEMENT WALLS	BASEMENT WALLS
	R-26	R-13	R-11	R-5	R-5	R-5

SILL or BOTTOM PLATE TO FND. CONNECTIONS RESISTING UPLIFT LOADS-130MPH WINDS EXP. "B"			
BOTTOM PLATE TO FND. ANCHOR BOLT CONNECTION RESISTING	FOUNDATION SUPPORTING	MAX. ANCHOR BOLT SPACING (in.)	
UPLIFT LOADS	1-3 STORES	28	33

SILL or BOTTOM PLATE TO FND. CONNECTIONS RESISTING SHEAR LOADS-130MPH WINDS EXP. "B"			
BOTTOM PLATE TO FND. ANCHOR BOLT CONNECTION RESISTING	FOUNDATION SUPPORTING	MAX. ANCHOR BOLT SPACING (in.)	
SHEAR LOADS	1-3 STORES	30	45

UPLIFT CONNECTIONS-130MPH WINDS EXP. "B"				
CONNECTION TO WALL ASSEMBLY TO WALL ASSEMBLY TO FOUNDATION	FRAMING SPACING (in.)	ROOF SPAN (ft.)	NUM. OF 8d COM. NAILS OR 10d BOX NAILS IN EA. END OF STRAP	
ROOF ASSEMBLY TO WALL ASSEMBLY TO FOUNDATION	16" O.C.	28	499	1096
ROOF ASSEMBLY TO WALL ASSEMBLY TO FOUNDATION	16" O.C.	28	499	1096
WALL ASSEMBLY TO FOUNDATION	16" O.C.	28	194	436

JACK STUD REQUIREMENTS-FOR INTERIOR LOADBEARING WALLS						
HEADER SUPPORTING	ROOF SPAN (ft.)					
	12 FEET	24 FEET	36 FEET	48 FEET	60 FEET	72 FEET
3" 4.5" 5" 6.5"	3" 4.5" 5" 6.5"	3" 4.5" 5" 6.5"	3" 4.5" 5" 6.5"	3" 4.5" 5" 6.5"	3" 4.5" 5" 6.5"	3" 4.5" 5" 6.5"

TYPICAL UPLIFT CONNECTIONS

DESIGN CRITERIA:
THE CONSTRUCTION FOR SAID RESIDENCE, WHERE BASIC WIND SPEED IS 130 MILES PER HOUR, IS DESIGNED IN ACCORDANCE WITH: AND PAPER ASSOCIATION (AF&PA) AMERICAN WOOD PRESERVATION ASSOCIATION (AWPA) WOOD FRAME CONSTRUCTION MANUAL FOR ONE AND TWO FAMILY DWELLINGS (WFCM) 2001 EDITION AS WELL AS THE INTERNATIONAL RESIDENTIAL CODE (IRC) 2003 EDITION

UPLIFT CONNECTIONS

ROOF ASSEMBLY TO WALL ASSEMBLY:
UPLIFT CONNECTIONS SHALL BE FROM RAFTER OR TRUSS TO WALL STUD. WHEN RAFTERS OR TRUSSES ARE NOT LOCATED DIRECTLY ABOVE STUDS, RAFTERS SHALL BE ATTACHED TO THE WALL PLATE AND THE WALL FOR PLATE SHALL BE ATTACHED TO THE WALL STUD WITH NAILS. UPLIFT CONNECTIONS SHALL BE IN ACCORDANCE WITH TABLE BELOW.

WALL ASSEMBLY TO WALL ASSEMBLY:

STORY TO STORY UPLIFT CONNECTIONS FROM UPPER STORY WALL STUD TO LOWER STORY WALL STUD. WHEN UPPER STORY WALL STUDS ARE NOT LOCATED DIRECTLY ABOVE LOWER WALL STUDS, THE STUDS SHALL BE ATTACHED TO A COMMON MEMBER IN THE LOWER STORY WALL ASSEMBLY WITH NAILS. UPLIFT CONNECTIONS SHALL BE IN ACCORDANCE WITH TABLE BELOW.

WALL ASSEMBLY TO FOUNDATION:

FIRST FLOOR WALL STUDS SHALL BE CONNECTED TO THE FOUNDATION. SHEET PILING OR BENTONITE WALLS SHALL BE Nailed TO THE FOUNDATION. STUDS AND HAVE A MINIMUM EMBEDMENT OF 7 INCHES IN CONCRETE FOUNDATIONS AND SLABS-ON-GRADE. 15 INCHES IN MASONRY BLOCK FOUNDATIONS. OR BE LAPPED OVER THE BOTTOM LAYER. 3 INCH BOLTS SHALL BE USED TO ATTACH STUDS TO FOUNDATION. STEEL BOLT SPACINGS SHALL NOT EXCEED THE REQUIREMENTS. STEEL STRAPS EMBEDDED IN OR IN CONTACT WITH SLAB-ON-GRADE OR MASONRY BLOCK FOUNDATIONS SHALL BE HOT-DIPPED GALV. AFTER FABRICATION, OR MANUF. FROM G185 OR 2450 GALV. CONNECTIONS SHALL BE IN ACCORDANCE WITH TABLE BELOW.

HOLD-DOWNS

HOLD-DOWNS ARE REQUIRED AT THE END OF EACH SEGMENTED SHEARWALL SEGMENT OR AT THE END OF A PERFORATED SHEARWALL. WHEN FULL END OF A PERFORATED SHEARWALL IS USED, A SINGLE HOLD-DOWN SHALL BE PERMITTED TO BE USED TO RESIST THE OVERTURNING FORCES IN BOTH DIRECTIONS WHEN THE CORNER FRAMING IN THE ADJOINING WALLS IS FASTENED TOGETHER TO TRANSFER THE UPLIFT LOADS.

FIRESTOPPING NOTES:

- FIRESTOPPING SHALL BE PROVIDED TO CUT OFF ALL CONCEALED DRAFT OPENINGS THROUGH WALLS AND PARTITIONS BETWEEN STORIES AND BETWEEN A TOP STORY AND THE ROOF SPACE.
- PROVIDE FIRESTOPPING IN ALL CONCEALED SPACES OF STUD WALLS AND PARTITIONS, INCLUDING FURRED SPACES, AT THE CEILING AND FLOOR LEVEL.
- PROVIDE FIRESTOPPING AT ALL INTERCONNECTIONS BETWEEN CONCEALED VERTICAL AND HORIZONTAL SPACE SUCH AS SORTIES, DROP CEILING, COVE CEILING, ETC. TOP AND BOTTOM OF THE RUN.
- PROVIDE FIRESTOPPING IN CONCEALED SPACES BETWEEN STAIR SPINDERS AT THE TOP AND BOTTOM OF THE RUN.
- PROVIDE FIRESTOPPING AT OPENINGS AROUND VENTS, PIPES, DUCTS, CHIMNEYS AND REPLACES AT CEILING AND FLOOR LEVEL, WITH NON-COMBUSTIBLE MATERIALS.
- DEMOLITION UNIT SEPARATION.

UPLIFT CONNECTIONS
ST. TAMMANY PARISH ADMIN. COMPLEX
520 OLD SPANISH TRAIL
SLIDELL, LOUISIANA

RENOVATE OFFICE BUILDING
DAMMON ENGINEERING, INC.
ARCHITECTS - ENGINEERS
1096 FLORIDA AVENUE 986-649-6832 SLIDELL, LA. 70458
DAMMONENGINEERING.COM

A.19
SHEET
JOB NO. 1729
DATE: 1-8-07
SCALE: AS NOTED
FILE:
OF