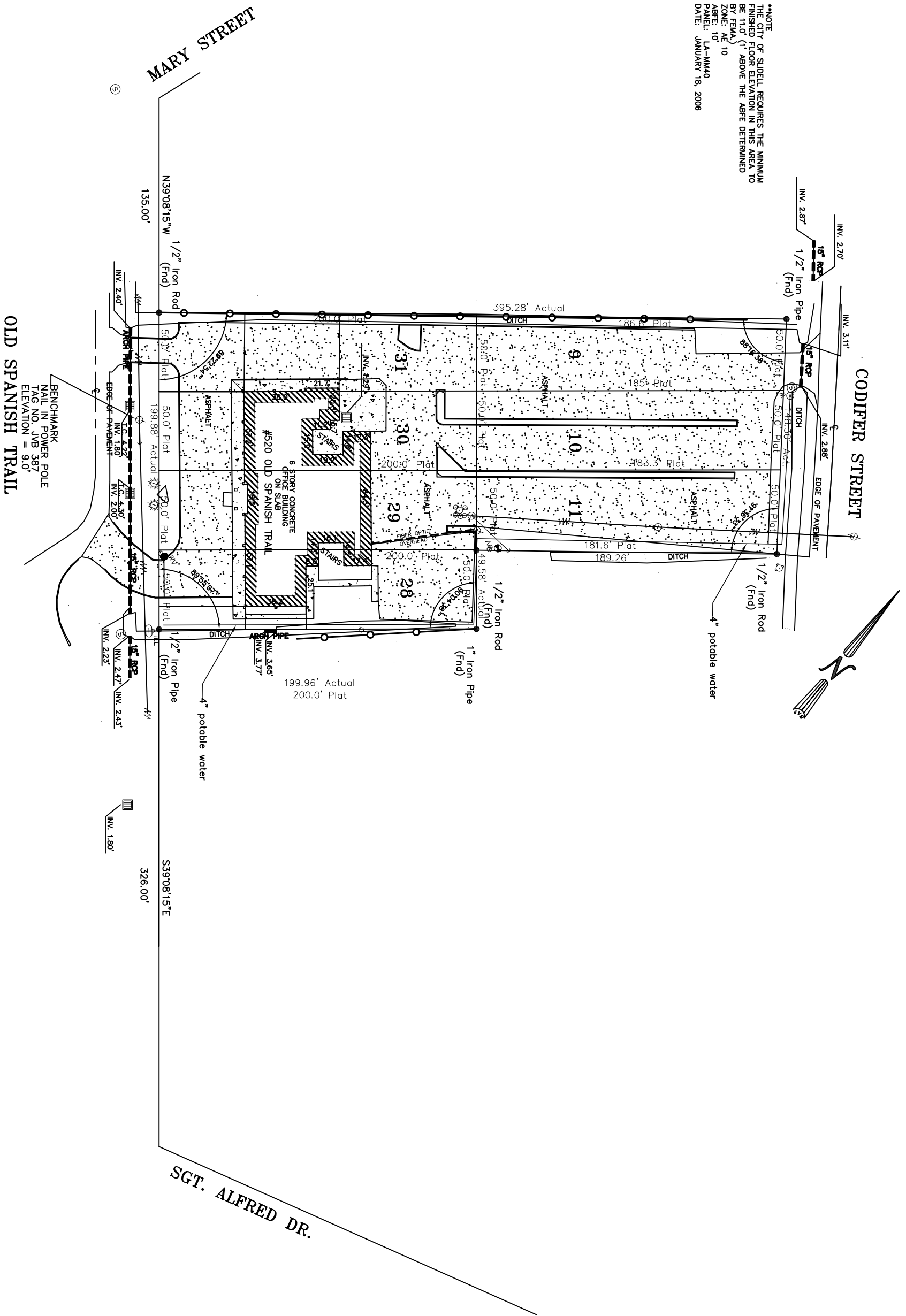


**NOTE:
 THE CITY OF SLIDELL REQUIRES THE MINIMUM
 FINISHED FLOOR ELEVATION IN THIS AREA TO
 BE 11.0' (1' ABOVE THE ABFE DETERMINED
 BY FEMA.)
 ZONE: AE 10
 ABFE: 10'
 PANEL: LA-MM40
 DATE: JANUARY 18, 2006



BENCHMARK
 NAIL IN POWER POLE
 TAG NO. JVB 387
 ELEVATION = 9.0'
 OLD SPANISH TRAIL

COPY OF SURVEY
 SCALE: 1" = 30'-0"

RENOVATE OFFICE BUILDING
DAMMON ENGINEERING. INC.
 1095 FLORIDA AVENUE 985-649-5832 SLIDELL, LA. 70458
 DAMMONENGINEERING.COM

COPY OF SURVEY
 ST. TAMMANY PARISH ADMIN. COMPLEX
 520 OLD SPANISH TRAIL
 SLIDELL, LOUISIANA

SCALE: 1" = 30'
 FILE:
 JOB NO. 1729
 DATE: 1-8-07
 SHEET
C-1
 OF