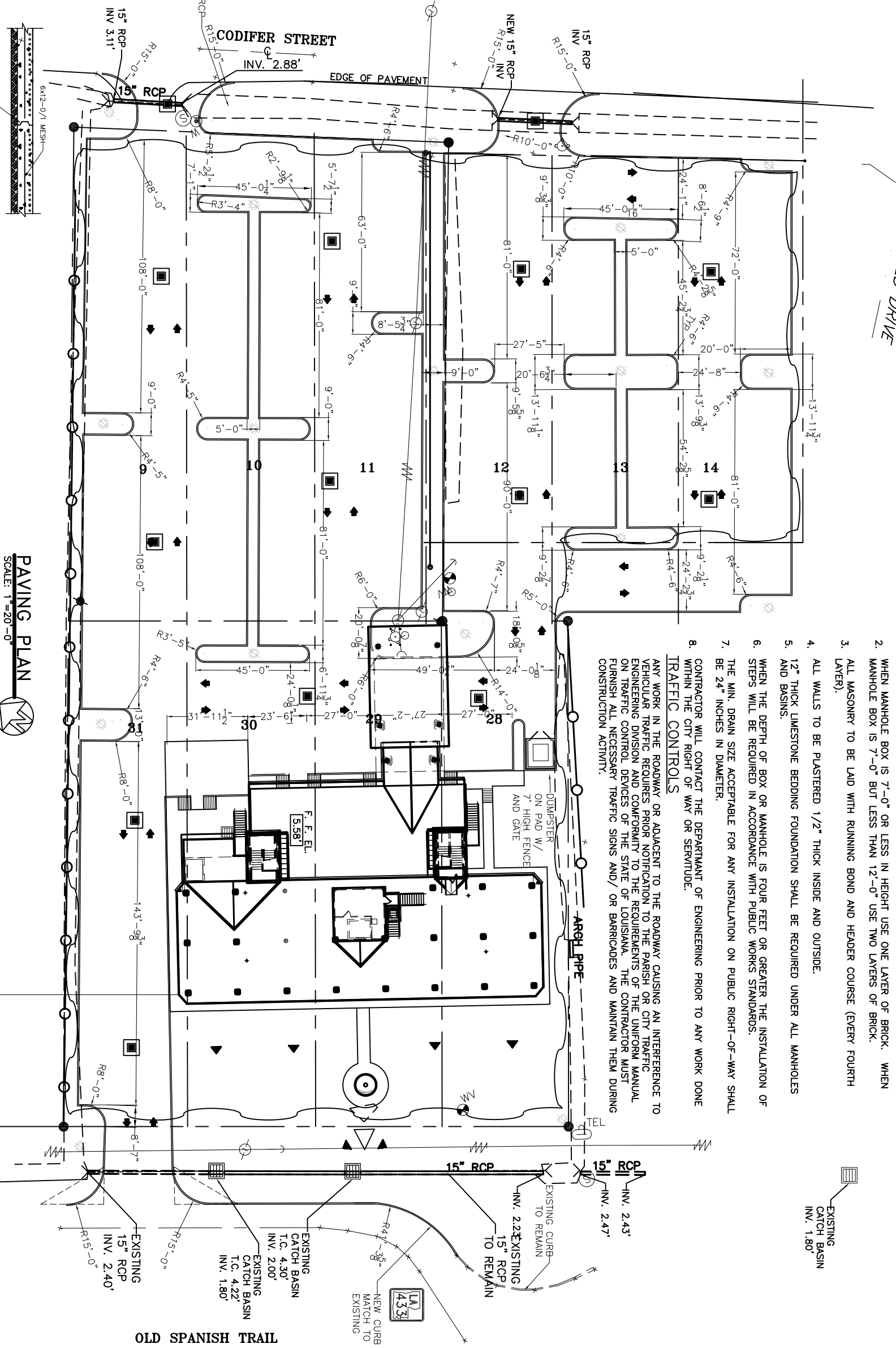


PROJECT:		1095 FLORIDA AVENUE, SLIDELL	
DRAINAGE RUN-OFF CALCULATIONS - RATIONAL METHOD			
POND DEVELOPMENT			
10 Year Frequency			
1) = CA	Waterflow Surface (cft/s)	0	sqft = 0.000 Acres
	Street Surface (cft/s)	0.21	sqft = 0.000 Acres
	Green Space (cft/s)	26524	sqft = 0.810 Acres
	Summary	26524	sqft = 0.810 Acres
	C =	0.35	
	L =	2.26	
	S =	0.1563	
	TC =	2.82	
	TC - D =	4.50	
	TC - D +	1.760	
	Q ₁ =	6.880 cfs	RUNOFF LIMIT 90%
			0.884 cfs
			10 Year Frequency
2) = CA	Waterflow Surface (cft/s)	22198	sqft = 0.696 Acres
	Street Surface (cft/s)	0	sqft = 0.000 Acres
	Green Space (cft/s)	4418	sqft = 0.101 Acres
	Summary	26524	sqft = 0.810 Acres
	C =	0.31	
	L =	1.831	
	S =	0.1563	
	TC =	8.82	
	TC - D =	7.60	
	TC - D +	1.760	
	Q ₁ =	3.746 cfs	
			10 Year Frequency

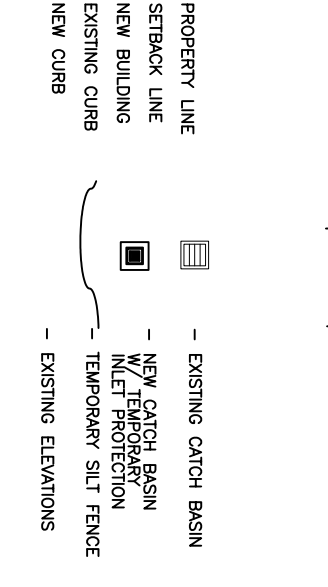
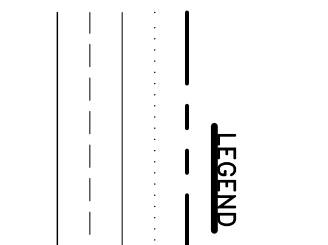
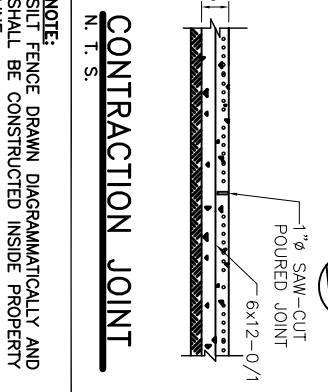
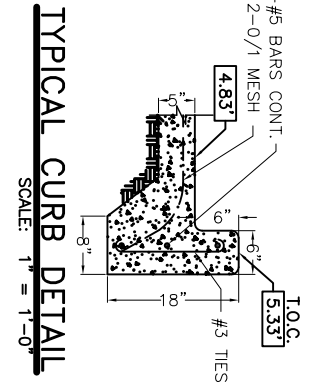
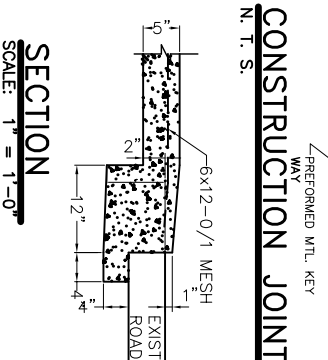
REQUIRED CONDUIT =		3.48 inch diameter	
Q ₁	0.864 cfs	0.08	coefficient
Q ₂	0.08	0.08	coefficient
Q ₃	0.08	0.08	coefficient
Q ₄	0.08	0.08	coefficient
Q ₅	0.08	0.08	coefficient
Q ₆	0.08	0.08	coefficient
Q ₇	0.08	0.08	coefficient
Q ₈	0.08	0.08	coefficient
Q ₉	0.08	0.08	coefficient
Q ₁₀	0.08	0.08	coefficient
Q ₁₁	0.08	0.08	coefficient
Q ₁₂	0.08	0.08	coefficient
Q ₁₃	0.08	0.08	coefficient
Q ₁₄	0.08	0.08	coefficient
Q ₁₅	0.08	0.08	coefficient
Q ₁₆	0.08	0.08	coefficient
Q ₁₇	0.08	0.08	coefficient
Q ₁₈	0.08	0.08	coefficient
Q ₁₉	0.08	0.08	coefficient
Q ₂₀	0.08	0.08	coefficient

- NOTES:**
- 1) FIELD VERIFY ALL ELEVATIONS PRIOR TO CONSTRUCTION.
 - 2) DRAIN PIPE & FITTINGS SHALL BE POLYVINYL CHLORIDE PLASTIC PIPE MEETING CLASS A-2000 PVC. ELEVATIONS SHOWN ARE M.S.L.
 - 3) MUCK OUT 24" DEEP FOR FOUNDATION PAD MINIMUM, OR TO UNDISTURBED SOIL CAPABLE OF 1500 PSF BEARING.



SGT. ALFRED DRIVE

- DRAINAGE**
1. CONCRETE STRENGTH TO BE 4,000 P.S.I. (MIN.) @ 28 DAYS.
 2. WHEN MANHOLE BOX IS 7'-0" OR LESS IN HEIGHT USE ONE LAYER OF BRICK. WHEN MANHOLE BOX IS 7'-0" BUT LESS THAN 12'-0" USE TWO LAYERS OF BRICK.
 3. ALL MASONRY TO BE LAID WITH RUNNING BOND AND HEADER COURSE (EVERY FOURTH LAYER).
 4. ALL WALLS TO BE PLASTERED 1/2" THICK INSIDE AND OUTSIDE.
 5. AND BASINS.
 6. WHEN THE DEPTH OF BOX OR MANHOLE IS FOUR FEET OR GREATER THE INSTALLATION OF STEPS WILL BE REQUIRED IN ACCORDANCE WITH PUBLIC WORKS STANDARDS.
 7. THE MIN. DRAIN SIZE ACCEPTABLE FOR ANY INSTALLATION ON PUBLIC RIGHT-OF-WAY SHALL BE 24" INCHES IN DIAMETER.
 8. CONTRACTOR WILL CONTACT THE DEPARTMENT OF ENGINEERING PRIOR TO ANY WORK DONE WITHIN THE CITY RIGHT OF WAY OR SERVITUDE.
- TRAFFIC CONTROLS**
- ANY WORK IN THE ROADWAY OR ADJACENT TO THE ROADWAY CAUSING AN INTERFERENCE TO VEHICULAR TRAFFIC REQUIRES PRIOR NOTIFICATION TO THE PARISH OR CITY TRAFFIC ENGINEERING DIVISION AND CONFORMITY TO THE REQUIREMENTS OF THE UNIFORM MANUAL ON TRAFFIC CONTROL DEVICES OF THE STATE OF LOUISIANA. THE CONTRACTOR MUST FURNISH ALL NECESSARY TRAFFIC SIGNS AND/ OR BARRICADES AND MAINTAIN THEM DURING CONSTRUCTION ACTIVITY.



<p>RENOVATE OFFICE BUILDING</p> <p>DAMMON ENGINEERING, INC.</p> <p>1095 FLORIDA AVENUE 985-649-5832 SLIDELL, LA. 70458</p> <p>DAMMONENGINEERING.COM</p>	<p>PAVING DETAILS</p> <p>ST. TAMMANY PARISH ADMIN. COMPLEX</p> <p>520 OLD SPANISH TRAIL</p> <p>SLIDELL, LOUISIANA</p>
<p>SCALE: 1"=20'</p> <p>FILE:</p> <p>JOB NO. 1729</p> <p>DATE: 1-8-07</p> <p>SHEET</p> <p>C-5</p> <p>OF</p>	