

NOTE:

ALL UTILITIES SHALL BE INSTALLED UNDERGROUND.

SITE LIGHTING

EXTERIOR LIGHTING SHALL BE SHADED OR INWARDLY DIRECTED IN SUCH A MANNER SO THAT NO DIRECT LIGHTING OR GLARE IS CAST BEYOND THE PROPERTY LINE. THE INTENSITY OF SUCH LIGHTING SHALL NOT EXCEED ONE FOOT CANDLE AS MEASURED AT THE ABUTTING PROPERTY LINE.

LUMINAIRE TYPE SUMMARY

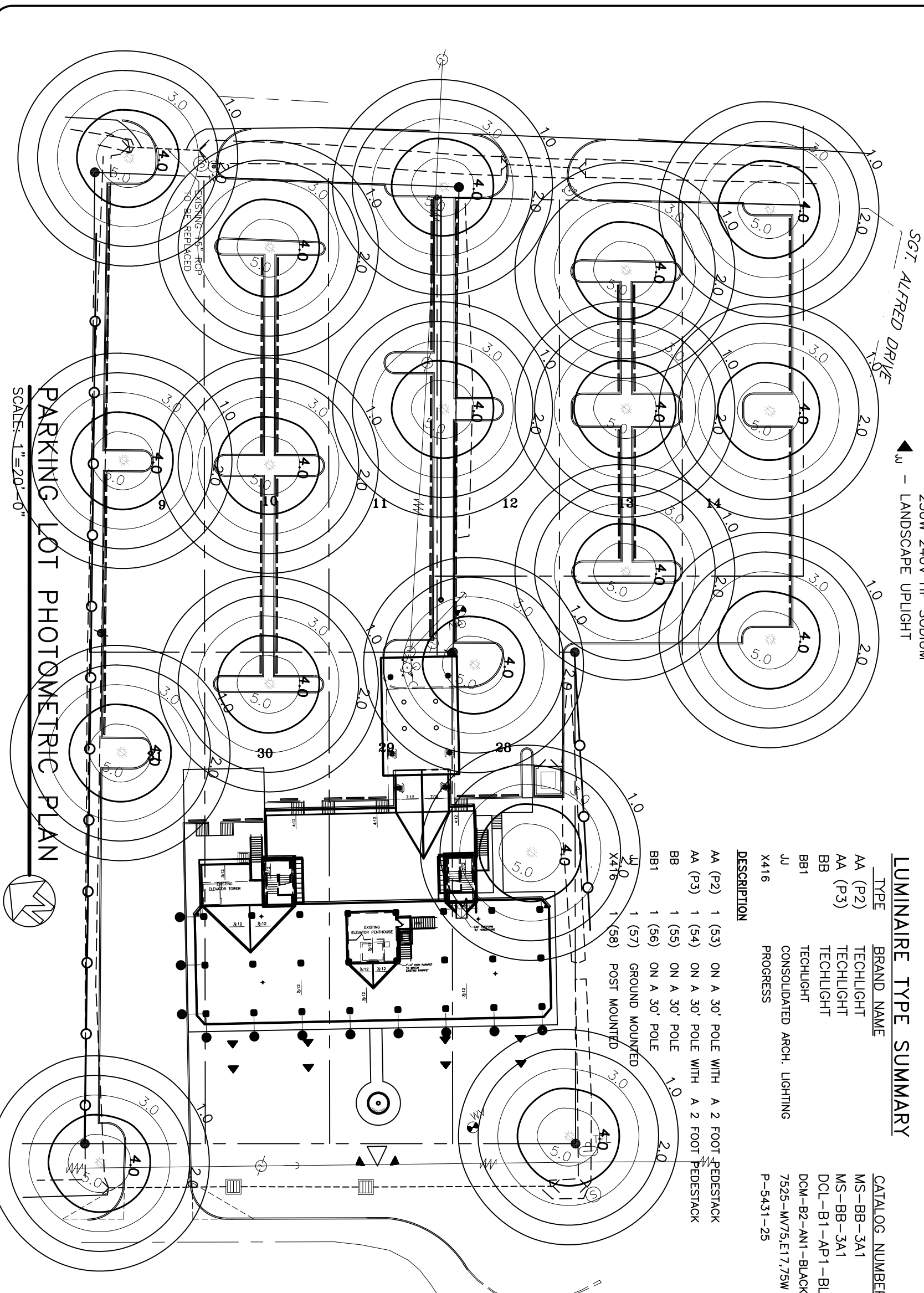
TYPE	BRAND NAME	CATALOG NUMBER	QUANTITY
AA (P2)	TECHLIGHT	MS-BB-3A1	3
AA (P3)	TECHLIGHT	MS-BB-3A1	5
BB	TECHLIGHT	DCL-B1-AP1-BLACK	1
BB1	TECHLIGHT	DCM-B2-AN1-BLACK	3
JJ	CONSOLIDATED ARCH. LIGHTING	7525-MW75,E17,75W	7
X416	PROGRESS	P-5431-25	9

DESCRIPTION

- AA (P2) 1 (53) ON A 30' POLE WITH A 2 FOOT PEDESTACK
- AA (P3) 1 (54) ON A 30' POLE WITH A 2 FOOT PEDESTACK
- BB 1 (55) ON A 30' POLE
- BB1 1 (56) ON A 30' POLE
- 1 (57) GROUND MOUNTED
- 1 (58) POST MOUNTED

LEGEND

- — — — — PROPERTY LINE
- — — — — FENCE LINE
- · — · — WIRING
- AA * — 2 @ 90° LUMINAIRE 250W 240V HP SODIUM
- ▲ — LANDSCAPE UPLIGHT



PARKING LOT PHOTOMETRIC PLAN

SCALE: 1"=20'-0"

LEGEND

- — — — — PROPERTY LINE
- — — — — FENCE LINE
- · — · — WIRING
- AA * — 2 @ 90° LUMINAIRE 250W 208V HP SODIUM
- ▲ — LANDSCAPE UPLIGHT

RENOVATE OFFICE BUILDING

DAMMON ENGINEERING. INC.

1095 FLORIDA AVENUE 985-649-5832 SLIDELL, LA. 70458
DAMMONENGINEERING.COM

PARKING LOT PHOTOMETRIC PLAN

ST. TAMMANY PARISH OFFICE BUILDING
520 OLD SPANISH TRAIL
SLIDELL, LOUISIANA

SCALE: 1"=20'
FILE:
JOB NO. 1729
DATE: 1-8-07
SHEET
E14P
OF