

**LEGEND**

- PROPERTY LINE
- - - FENCE LINE
- - - WIRING
- AA ☼ - 2 @ 90° LUMINAIRE  
250W 277V HP SODIUM
- ▲ - LANDSCAPE UPLIGHT

**NOTE:**  
ALL UTILITIES SHALL BE INSTALLED UNDERGROUND.

**SITE LIGHTING**

EXTERIOR LIGHTING SHALL BE SHADED OR INWARDLY DIRECTED IN SUCH A MANNER SO THAT NO DIRECT LIGHTING OR GLARE IS CAST BEYOND THE PROPERTY LINE. THE INTENSITY OF SUCH LIGHTING SHALL NOT EXCEED ONE FOOT CANDLE AS MEASURED AT THE ABUTTING PROPERTY LINE.

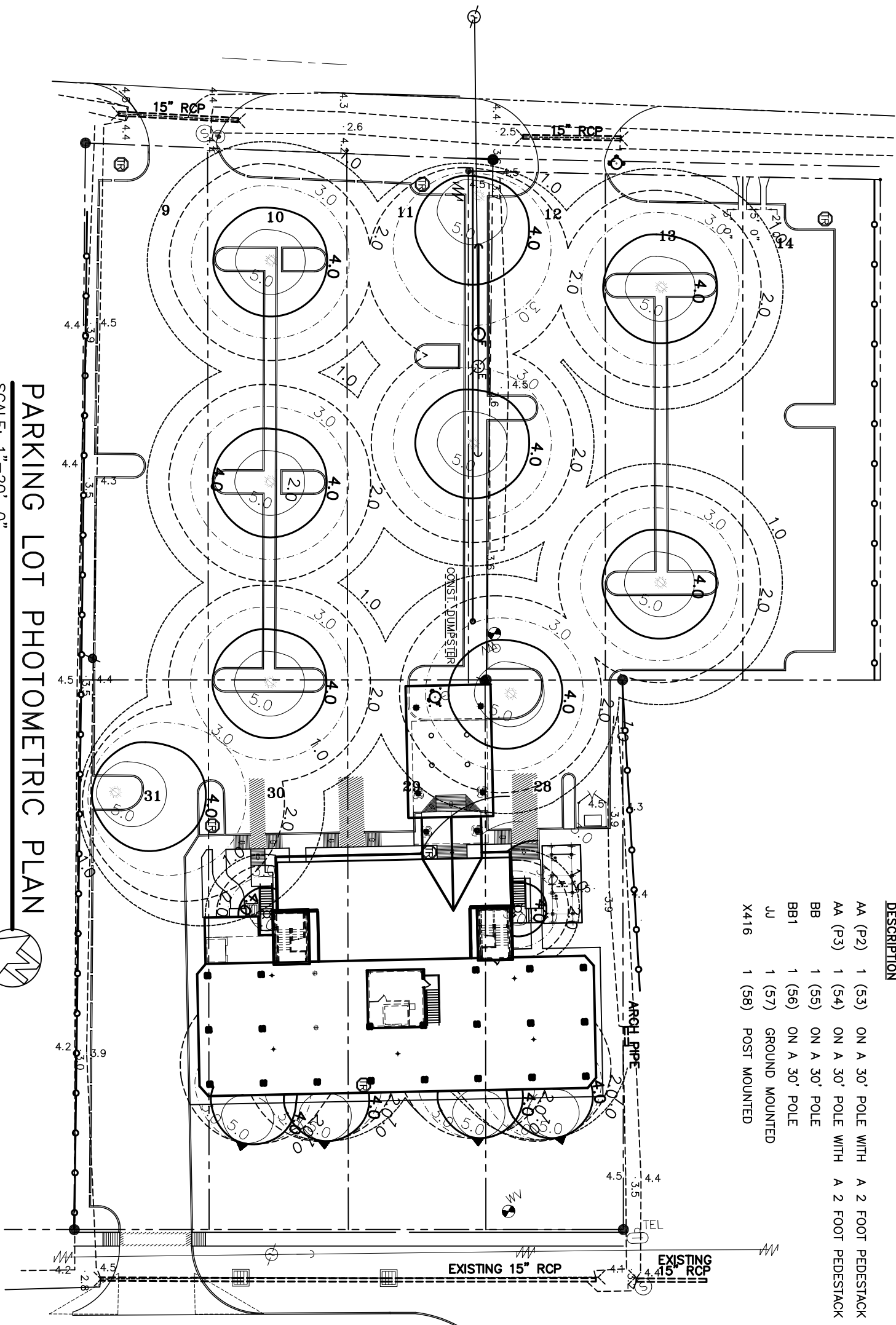
**LUMINAIRE TYPE SUMMARY**

TYPE BRAND NAME CATALOG NUMBER

**QUANTITY**

DESCRIPTION	TYPE	BRAND NAME	CATALOG NUMBER	QUANTITY
AA (P2)	1 (53)	ON A 30' POLE WITH A 2 FOOT PEDESTACK		1 (53)
AA (P3)	1 (54)	ON A 30' POLE WITH A 2 FOOT PEDESTACK		1 (54)
BB	1 (55)	ON A 30' POLE		1 (55)
BB1	1 (56)	ON A 30' POLE		1 (56)
JJ	1 (57)	GROUND MOUNTED		1 (57)
X416	1 (58)	POST MOUNTED		1 (58)

SGT. ALFRED DRIVE



**LEGEND**

- PROPERTY LINE
- - - FENCE LINE
- - - WIRING
- ☼ - 2 @ 90° LUMINAIRE  
250W 277V HP SODIUM
- ▲ - LANDSCAPE UPLIGHT

**PARKING LOT PHOTOMETRIC PLAN**

SCALE: 1"=20'-0"

REVISED: 03-07-07db

<p>RENOVATE OFFICE BUILDING</p> <p><b>DAMMON ENGINEERING. INC.</b></p> <p>1095 FLORIDA AVENUE 985-649-5832 SLIDELL, LA. 70458 DAMMONENGINEERING.COM</p>	<p><b>PARKING LOT PHOTOMETRIC PLAN</b></p> <p>ST. TAMMANY PARISH OFFICE BUILDING 520 OLD SPANISH TRAIL SLIDELL, LOUISIANA</p>	<p>SCALE: 1"=20'</p> <p>FILE:</p> <p>JOB NO. 1729</p> <p>DATE: 1-8-07</p> <p>SHEET</p> <p><b>E15</b></p> <p>OF</p>
---	---	--