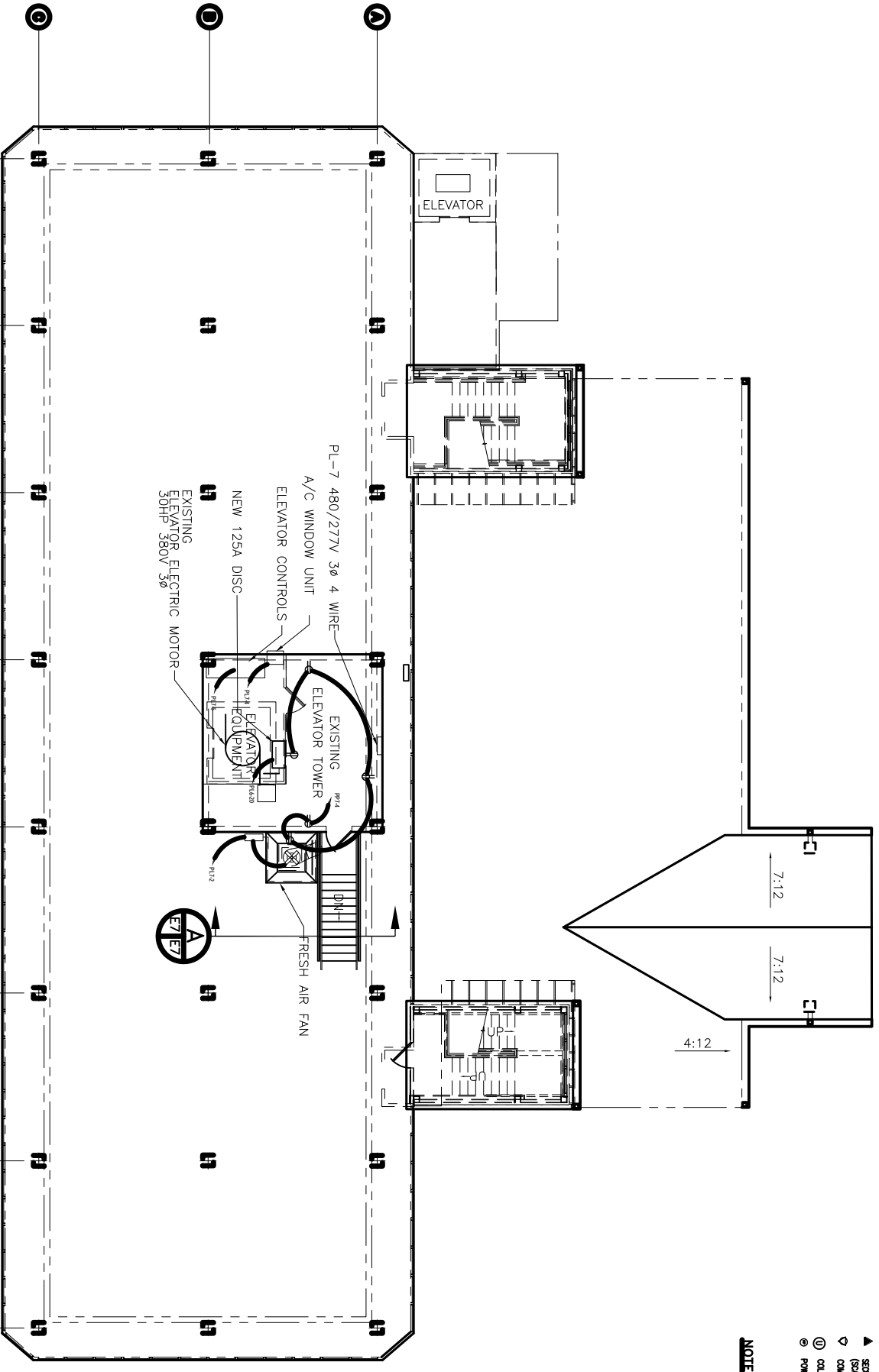


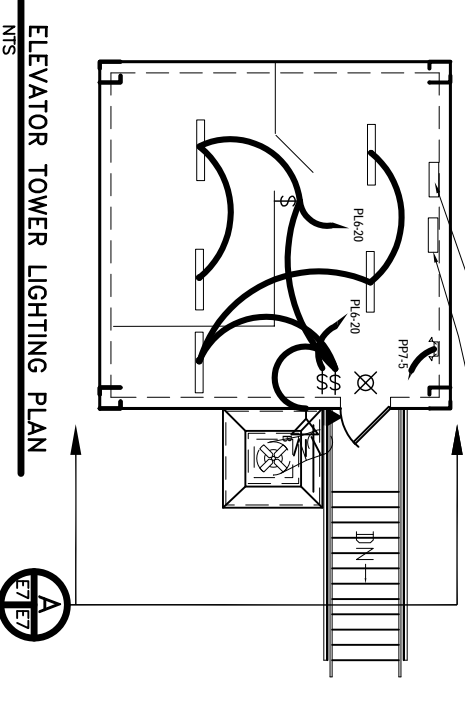
- LEGEND**
- Ⓛ NEW DUPLEX RECEPTACLE
  - Ⓜ EXHAUST FAN
  - Ⓝ SECURITY ACCESS DOOR (SCANNED BY OTHERS)
  - Ⓞ COMM & DATA
  - Ⓟ COLUMN MOUNTED UTILITY POWER AND COMM POLE
  - Ⓠ SINGLE POLE SWITCH
  - Ⓡ THREE-WAY SWITCH
  - Ⓢ EXIT LIGHT ROUTING (BATTERY BACK UP) (SCANNED BY OTHERS)
  - Ⓣ TWO TUBE 4' FLUORESCENT (120/240 V 250W HPS W/ BATTERY BACKUP)
  - Ⓤ NEW POWER RANGES ARE TO BE INSTALLED ON THE NORTH WALL OF THE RECOMMEND ROOMS

**NOTES**  
NEW POWER RANGES ARE TO BE INSTALLED ON THE NORTH WALL OF THE RECOMMEND ROOMS

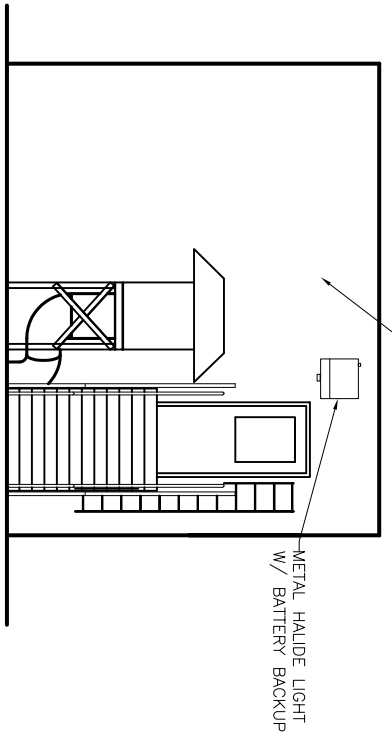


PP-7 120/240V 1Ø 3 WIRE  
PL-7 480/277V 3Ø 4 WIRE

**ROOF ELECTRICAL PLAN**  
SCALE: 1/8" = 1'-0"



**ELEVATOR TOWER LIGHTING PLAN**



**SECTION**  
SCALE: 1/4" = 1'-0"

REVISED: 05/21/07db  
REVISED: 03/07/07db

RENOVATE OFFICE BUILDING

# DAMMON ENGINEERING, INC.

1095 FLORIDA AVENUE 985-649-5832 SLIDELL, LA. 70458  
DAMMONENGINEERING.COM

**ROOF ELECTRICAL PLAN**

ST. TAMMANY PARISH ADMIN. COMPLEX  
520 OLD SPANISH TRAIL  
SLIDELL, LOUISIANA

SCALE: AS NOTED

FILE:

JOB NO. 1729

DATE: 1-8-07

SHEET

OF