

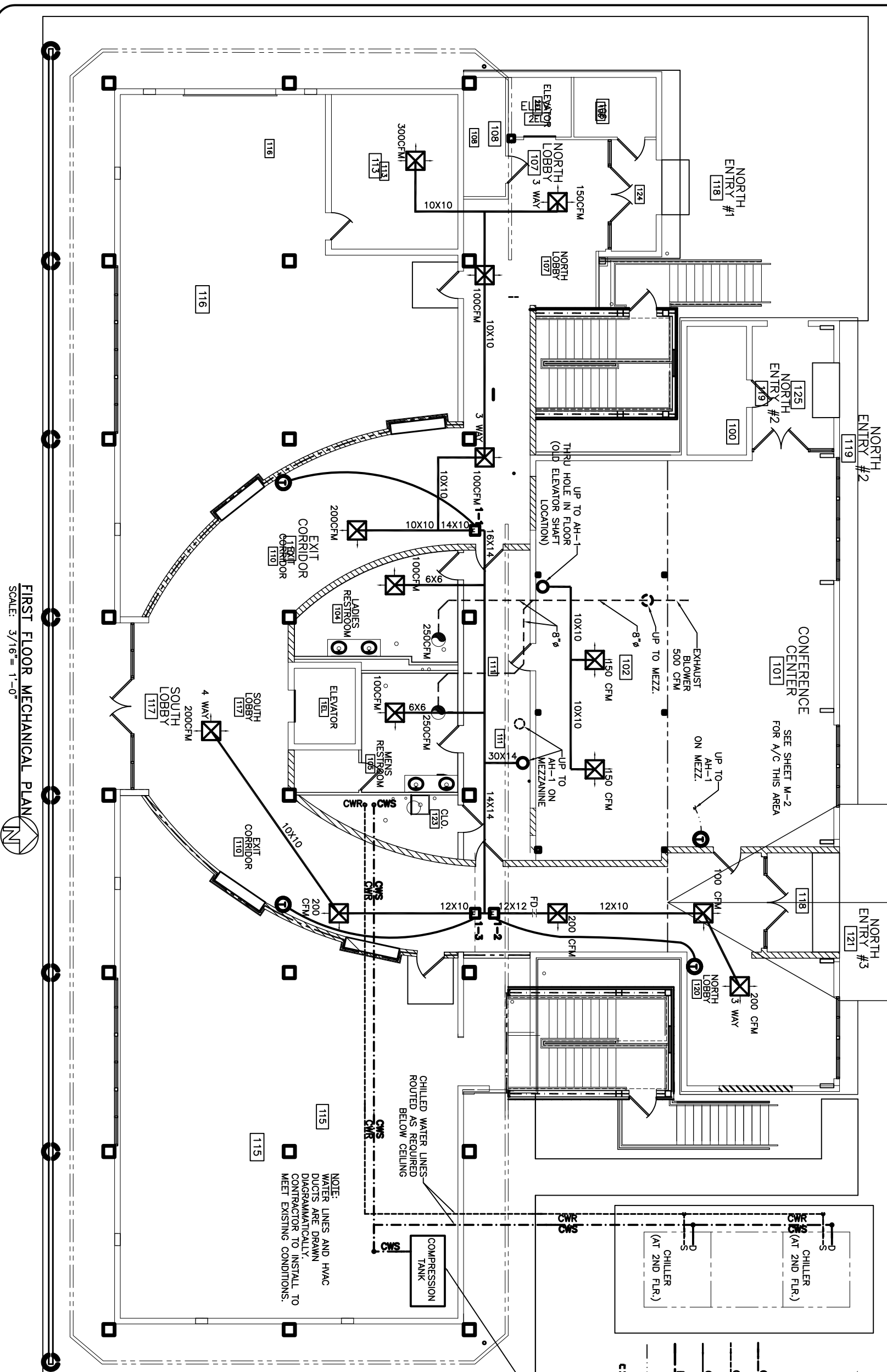
1ST FLOOR HVAC EQUIPMENT - HEATERS							
ROOM	HEATER NO.	SEN	LAT	TOTAL CFM	HEATING BTU KW	CARRIER BYPASS VALV	
110 NW	1-1	-	-	-	17,250	5.0	N/A
110 NE	1-2	-	-	-	17,250	5.0	N/A
110 NE	1-3	-	-	-	17,250	5.0	N/A

SEE DRAWING M-1
IN ALTERNATE BID PACKAGE
FOR ALTERNATE HVAC SYSTEM
(ALTERNATE BID #2)

NOTES
SEE DWG. M-9 "CHILLED WATER RISER DIAGRAM" FOR PIPE SIZES. SEE DWG. M-11 "OUTSIDE AIR RISER DIAGRAM" FOR DUCT SIZES. CONDENSATE LINES MAY BE RUN DIRECTLY TO DRAIN ON SAME FLOOR WHERE SUFFICIENT DROP IS AVAILABLE. INSULATE ALL PIPING. 5 FT. LONG HVAC FLEX HOSE MAY BE SUBSTITUTED AT DUCT RUN ENDS.

LEGEND

- ELECTRIC DUCT HEATER
- VARIABLE AIR VOLUME DAMPER
- HVAC AIR REGISTER
- RETURN AIR GRILLE TO BE TITUS #50 W/14" X 14" CORE 500 FPM MECH. VEL., TOT. PRESS. .032" H2O (W/ DAMPER) 24" X 24
- EXHAUST BLOWER
- THERMOSTAT
- HVAC FLEX HOSE. NOT TO EXCEED 5' IN LENGTH.
- WALL AIR RETURN
- AUTO SHUT-OFF DAMPER
- FIRE DAMPER
- CHILLED WATER SUPPLY
- CHILLED WATER RETURN
- CONDENSATE DRAIN
- FRESH AIR
- THERMOSTAT WIRE
- RETURN AIR CASIED OPENING IN WALL 32" X 12" (ROOM TO HALL CEILING)



NOTE:
WATER LINES AND HVAC DUCTS ARE DRAWN DIAGRAMMATICALLY. CONTRACTOR TO INSTALL TO MEET EXISTING CONDITIONS.

CHILLED WATER LINES ROUTED AS REQUIRED BELOW CEILING

COMPRESSION TANK - MOUNTED UNDER 1ST FLOOR CEILING SEE DETAIL

FIRST FLOOR MECHANICAL PLAN
SCALE: 3/16" = 1'-0"

REVISED: 05/10/07 db
REVISED: 05/02/07 db
REVISED: 04/26/07 db
REVISED: 03/07/07 db
REVISED: 02/23/07 dd

<p>RENOVATE OFFICE BUILDING</p> <h1 style="margin: 0;">DAMMON ENGINEERING. INC.</h1> <p style="font-size: small;">1095 FLORIDA AVENUE 985-649-5832 SLIDELL, LA. 70458 DAMMONENGINEERING.COM</p>	<p>1ST FLOOR MECHANICAL PLAN</p> <p>ST. TAMMANY PARISH ADMIN. COMPLEX 520 OLD SPANISH TRAIL SLIDELL, LOUISIANA</p>	<p>SCALE: AS NOTED</p> <p>FILE:</p> <p>JOB NO. 1729</p> <p>DATE: 1-8-07</p> <p>SHEET</p> <p style="font-size: large; font-weight: bold;">M-1</p> <p>OF</p>
---	---	--