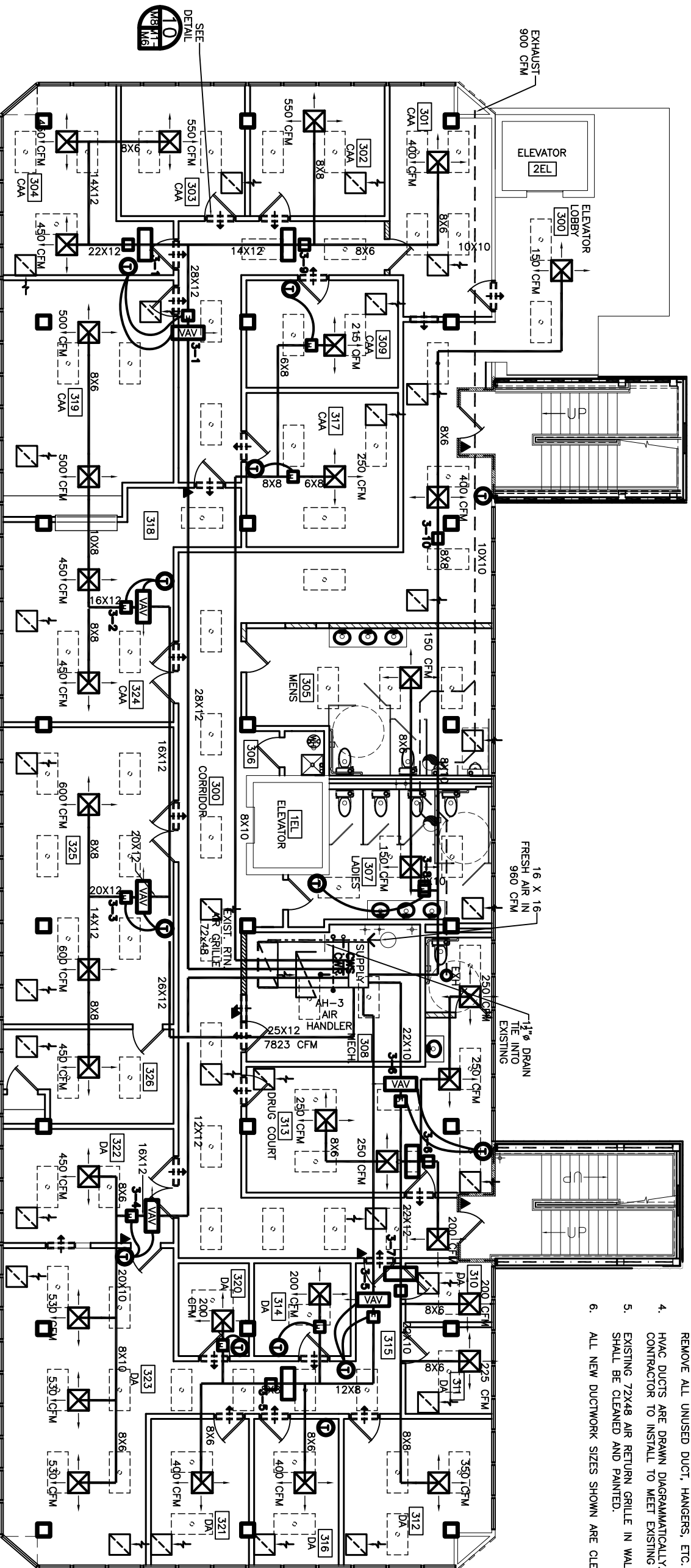


- NOTES:
1. EACH ROOM TO HAVE AN OPENING BETWEEN ROOM CEILING SPACE AND HALL CEILING FOR RETURN AIR (32X12, TYP).
 2. EXISTING DUCTWORK TO BE REUSED SHALL BE CLEANED PRIOR TO USAGE. SEE SPECIFICATIONS.
 3. PORTIONS OF DUCTWORK NOT SHOWN AS BEING REUSED SHALL BE REMOVED, CLEANED AND REUSED IN OTHER LOCATIONS CALLING FOR THAT DUCT SIZE OR SMALLER. INSTALL CLOSURE PLATES AT ALL UNUSED OPENINGS IN DUCT NOT BEING REUSED.
 4. REMOVE ALL UNUSED DUCT, HANGERS, ETC. WHEN COMPLETE.
 5. HVAC DUCTS ARE DRAWN DIAGRAMMATICALLY. CONTRACTOR TO INSTALL TO MEET EXISTING CONDITIONS.
 6. EXISTING 72X48 AIR RETURN GRILLE IN WALL OF MECHANICAL ROOM SHALL BE CLEANED AND PAINTED.
 7. ALL NEW DUCTWORK SIZES SHOWN ARE CLEAR INSIDE DIMENSIONS.



THIRD FLOOR MECHANICAL PLAN
SCALE: 3/16" = 1'-0"



LEGEND

- NEW HVAC SUPPLY DUCT
- - - NEW EXHAUST DUCT
- HVAC AIR REGISTER 24 X 24, TITUS #TMSA-AA
- RETURN AIR GRILLE TO BE TITUS #50 W/1/2 X 1/4 CORE (W/ DAMPER) 24 X 24
- RETURN AIR CASED OPENING IN WALL 32 X 12 (ROOM TO HALL CEILING)
- THERMOSTAT
- ELECTRIC DUCT HEATER
- VARIABLE AIR VOLUME DAMPER
- EXHAUST BLOWER

SEE DRAWING M-2
IN ALTERNATE BID PACKAGE
FOR ALTERNATE HVAC SYSTEM
(ALTERNATE BID #2)

3RD FLOOR HVAC EQUIPMENT - VAV & HEATERS								
ROOM	VAV NO.	COOLING BTUH			HEATING			
		SEN	LAT	TOTAL	CFM	BTU	KW	CARRIER BYPASS VAV
CORR.	3-1	62,808	9,824	72,632	2,400	14,220	4.2	35K-12
	3-2	52,723	9,824	62,547	1,900	8,810	2.6	35K-8
	3-3	43,929	6,140	50,069	1,650	3,240	1.0	35K-6
	3-4	53,904	7,368	61,272	2,050	10,095	3.0	35K-8
	3-5	31,114	4,912	36,026	1,200	7,110	2.0	35K-8
	3-6	33,923	8,604	42,527	1,575	12,825	3.7	35K-10
	3-7	-	-	-	-	-	-	N/A
	3-8	-	-	-	-	-	-	N/A
	3-9	-	-	-	-	-	-	N/A
	3-10	-	-	-	-	-	-	N/A

REVISED: 05-10-07/ab
REVISED: 05-02-07/ab
REVISED: 04-09-07/ab
REVISED: 03-30-07/ab
REVISED: 03-22-07

<p>DAMMON ENGINEERING, INC. 1095 FLORIDA AVENUE 985-649-5832 SLIDELL, LA. 70458 DAMMONENGINEERING.COM</p>	<p>RENOVATE OFFICE BUILDING</p> <p>3RD FLOOR MECHANICAL PLAN</p> <p>ST. TAMMANY PARISH ADMIN. COMPLEX 520 OLD SPANISH TRAIL SLIDELL, LOUISIANA</p>	<p>SCALE: AS NOTED</p> <p>FILE: _____</p> <p>JOB NO. 1729</p> <p>DATE: 12-07-06</p> <p>SHEET</p> <p style="font-size: 2em; font-weight: bold;">M-3</p> <p>OF _____</p>
--	---	--