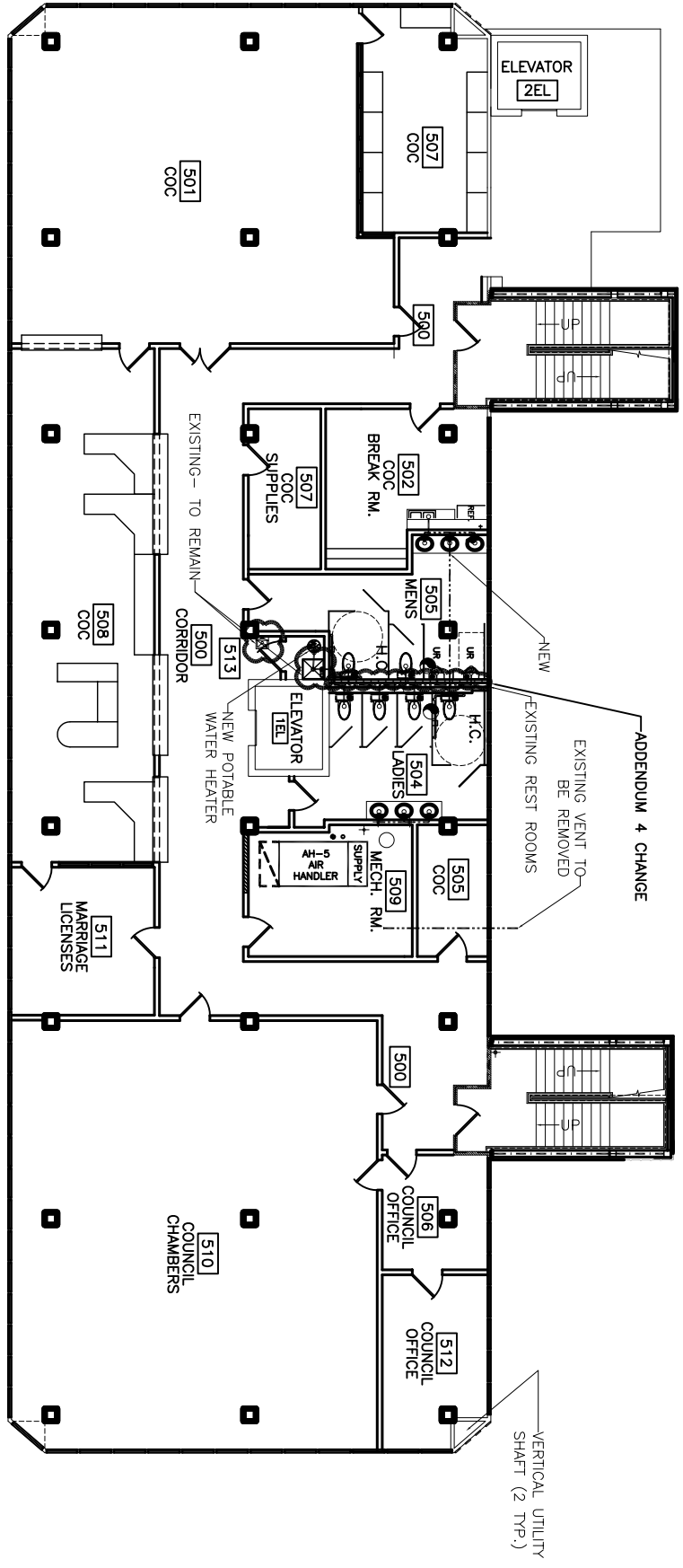


- NOTES:
1. NEW VENT LINES SHELL RUN TO N.E. CORNER VERTICAL OPENING TO ROOF.
 2. SEE DRAWING P-1 FOR GENERAL NOTES.
 3. MENS ROOM WATER CLOSETS, PIPE, AND URINALS CAN BE CLEANED AND RE-USED. REPLACE ALL OTHER FIXTURES.
 4. LADIES ROOM WATER CLOSETS AND PIPE CAN BE CLEANED AND REUSED. REPLACE ALL OTHER FIXTURES.
 5. REPLACE ALL TOILET SEATS AND SANITARY NAPKIN DISPOSAL BINS.
 6. INSTALL OWNER PROVIDED SOAP DISPENSERS AND TOILET PAPER & PAPER TOWEL HOLDERS.
 7. INTEGRAL LAVATORY/VANITY: CULTURED MARBLE, SIZE AS SHOWN ON DRAWING A-21.
 8. URINALS: TOTO UT447 (OR EQUAL) WITH TOTO TMU11NCC 1GPF FLUSH VALVE (OR EQUAL).
 9. WATER CLOSETS: TOTO CT705 (CT705L FOR HANDICAP) WITH TOTO TM11NCC-32 1.6 GPF FLUSH VALVE AMERICAN STANDARD 2234 WITH SLOAN 111 ROYAL 1.6 GPF FLUSHMETER VALVE (OR EQUAL).
 10. TOILET SEATS: KOHLER K-4710-T (MENS), K-4752 (LADIES) (OR EQUALS).
 11. PARTITIONS: BOBRICK 1080 SERIES PHENOLIC (OR EQUAL).
 12. MIRRORS: SHEET MIRROR 3'-0" HIGH X LENGTH OF VANITY, MOUNTED 3'-4" ABOVE FLOOR.
 13. SANITARY NAPKIN DISPOSAL: BOBRICK B354 (LADIES PARTITIONS) (OR EQUAL).



FIFTH FLOOR PLUMBING PLAN
SCALE: 1/8" = 1'-0"

- LEGEND
- ☒ - MOP SINK & STAND
 - ⊙ - 6 GALLON, 120 VAC, 1 PH. COMPACT WATER HEATER
 - - SANITARY SEWER LINE

☒ = ADDENDUM CHANGE

ADDENDUM 4 REVISED: 8/20/07/ab
REVISED: 2/19/07
REVISED: 1/24/07

<p>RENOVATE OFFICE BUILDING</p> <p>DAMMON ENGINEERING, INC.</p> <p>1095 FLORIDA AVENUE 985-649-5832 SLIDELL, LA. 70458 DAMMONENGINEERING.COM</p>	<p>5TH FLOOR PLUMBING PLAN</p> <p>ST. TAMMANY PARISH ADMIN. COMPLEX 520 OLD SPANISH TRAIL SLIDELL, LOUISIANA</p>	<p>SCALE: AS NOTED</p> <p>FILE:</p> <p>JOB NO. 1729</p> <p>DATE: 1-8-07</p> <p>SHEET</p> <p>P-5</p> <p>OF</p>
---	---	---