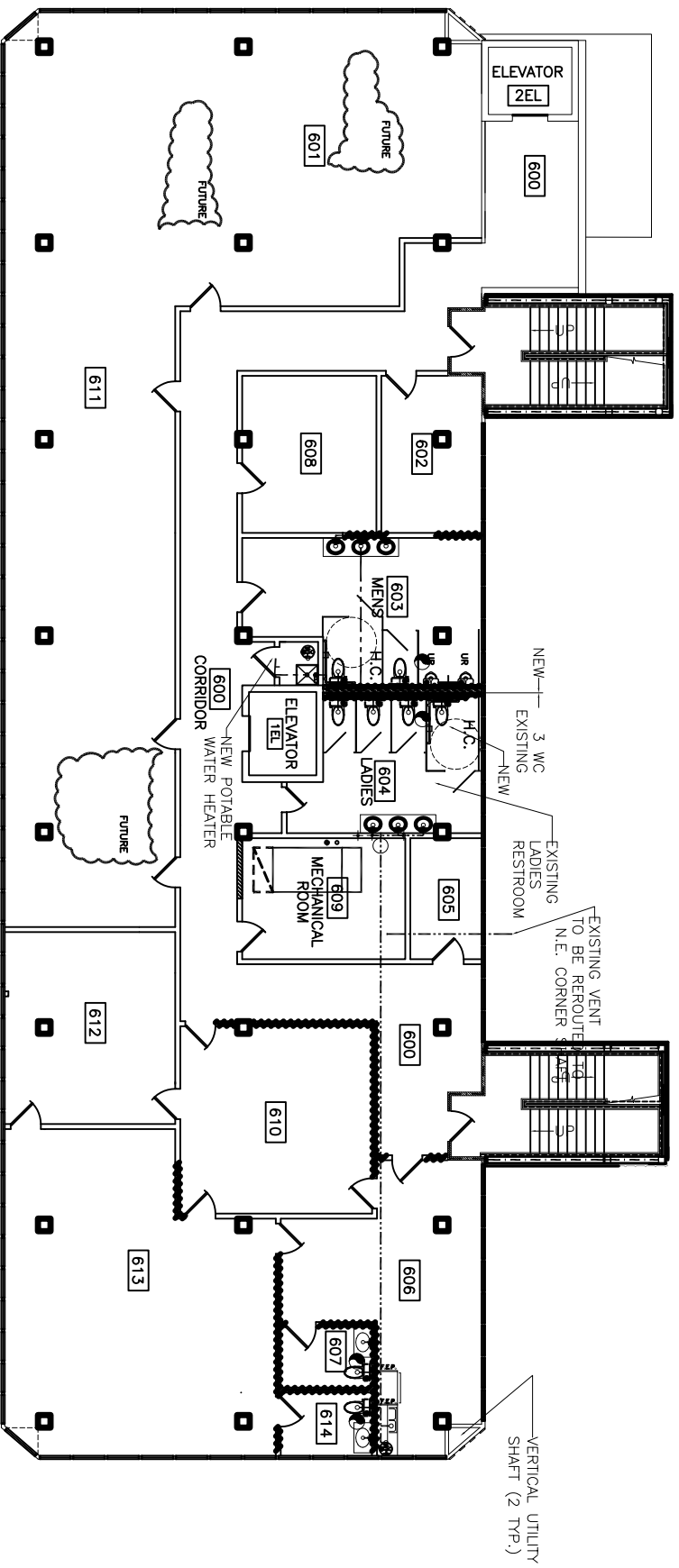


- NOTES:
1. THIS IS A NEW RESTROOM AND WILL REQUIRE EXTENDING SERVICES THRU THE WALL, NEW WALL SUPPORTS FOR WALL HUNG FIXTURES, ETC. DRAIN FROM LAVATORIES MUST BE NEW THRU FLOOR AND EXTENDED TO EXISTING SERVICE.
  2. NEW VENT LINES SHELL RUN TO N.E. CORNER VERTICAL OPENING TO ROOF.
  3. SEE DRAWING P-1 FOR GENERAL NOTES.
  4. REPLACE ALL MENS ROOM WATER CLOSETS AND URINALS, PIPING AND PIPING FIXTURES.
  5. REPLACE ALL LADIES ROOM WATER CLOSETS, PIPING, AND PIPING FIXTURES.
  6. REPLACE ALL TOILET SEATS AND SANITARY NAPKIN DISPOSAL BINS.
  7. INSTALL OWNER PROVIDED SOAP DISPENSERS AND TOILET PAPER & PAPER TOWEL HOLDERS.

8. INTEGRAL LAVATORY/VANITY: CULTURED MARBLE, SIZE AS SHOWN ON DRAWING A-21.
9. URINALS: TOTO UT447 (OR EQUAL) WITH TOTO TMU11NC 1Gpf FLUSH VALVE (OR EQUAL).
10. WATER CLOSETS: TOTO C705 (C705L FOR HANDICAP) WITH TOTO TMU11NC-32 1.6 Gpf FLUSH VALVE AMERICAN STANDARD 2234 WITH SLOAN 111 ROYAL 1.6 Gpf FLUSHMETER VALVE (OR EQUAL).
11. TOILET SEATS: KOHLER K-4710-T (MENS), K-4752 (LADIES) (OR EQUALS).
12. PARTITIONS: BOBRICK 1080 SERIES PHENOLIC (OR EQUAL).
13. MIRRORS: SHEET MIRROR 3'-0" HIGH X LENGTH OF VANITY, MOUNTED 3'-4" ABOVE FLOOR.
14. SANITARY NAPKIN DISPOSAL: BOBRICK B354 (LADIES PARTITIONS) (OR EQUAL).



SIXTH FLOOR PLUMBING PLAN  
SCALE: 1/8" = 1'-0"

LEGEND

- ☒ - MOP SINK & STAND
- ⊗ - 6 GALLON, 120 VAC, 1 PH. COMPACT WATER HEATER
- - SANITARY SEWER LINE

REVISED: 2/19/07  
REVISED: 1/24/07

P-6 OF	SHEET	DATE: 1-8-07	JOB NO. 1729	SCALE: AS NOTED	FILE:	RENOVATE OFFICE BUILDING <b>DAMMON ENGINEERING, INC.</b> 1095 FLORIDA AVENUE 985-649-5832 SLIDELL, LA. 70458 DAMMONENGINEERING.COM	<b>6TH FLOOR PLUMBING PLAN</b>  ST. TAMMANY PARISH ADMIN. COMPLEX 520 OLD SPANISH TRAIL SLIDELL, LOUISIANA
-----------	-------	--------------	--------------	-----------------	-------	---	--