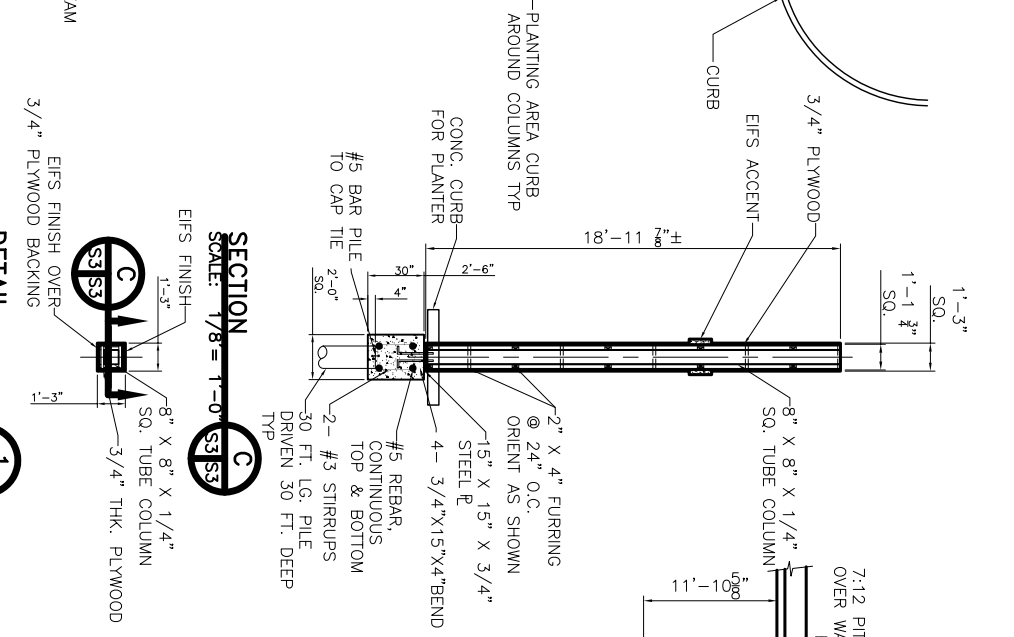
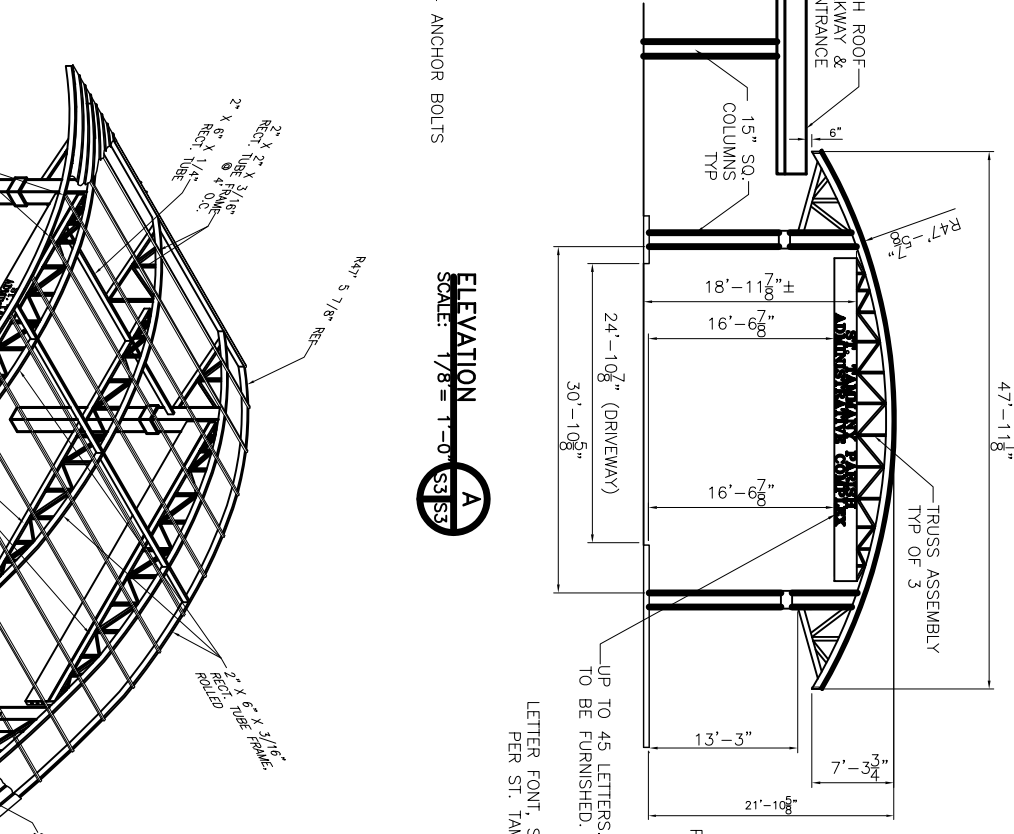


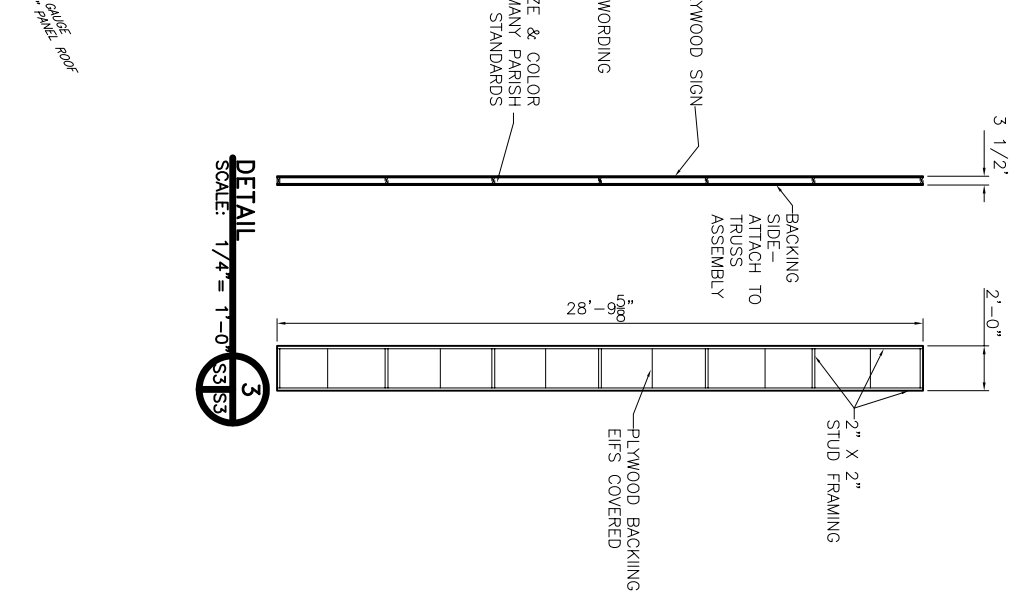
**PORTE COCHERE PLAN**  
SCALE: 1/8" = 1'-0"



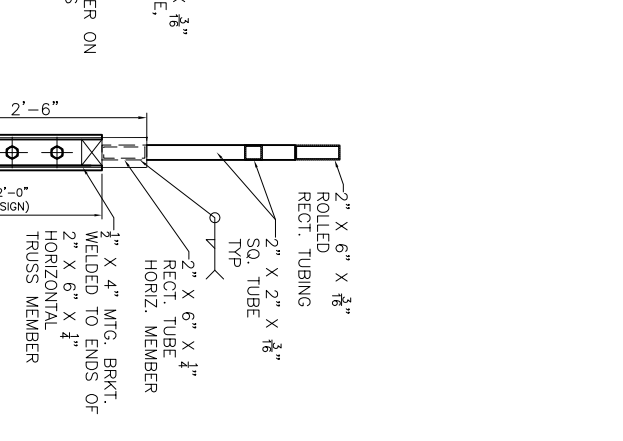
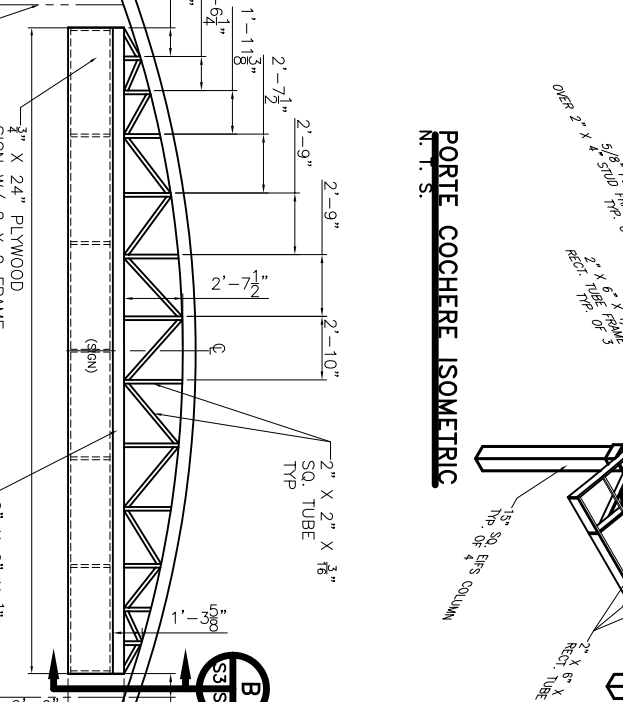
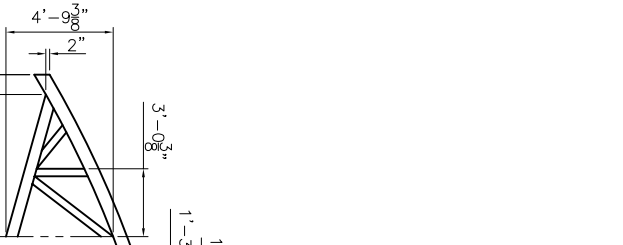
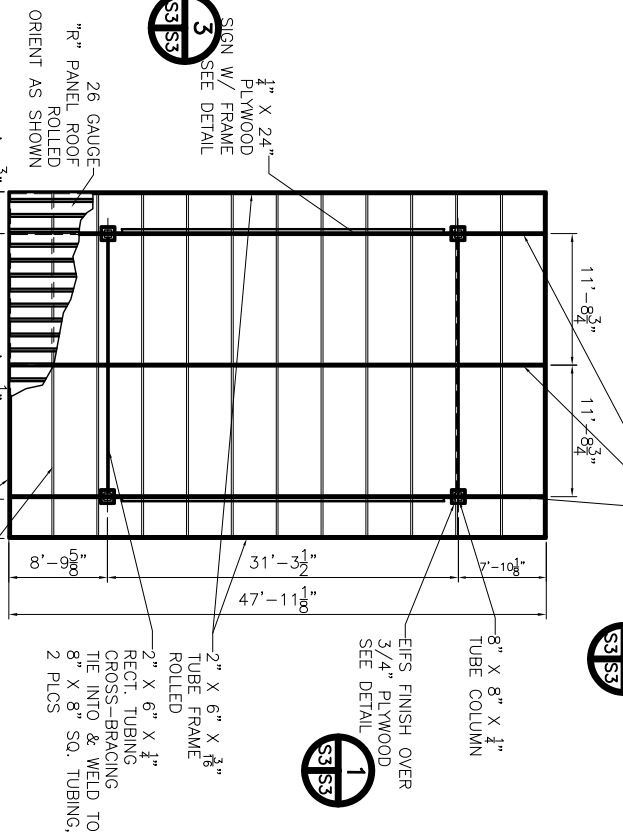
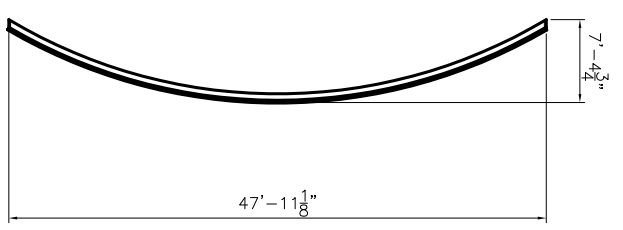
**SECTION C**  
SCALE: 1/8" = 1'-0"



**ELEVATION A**  
SCALE: 1/8" = 1'-0"

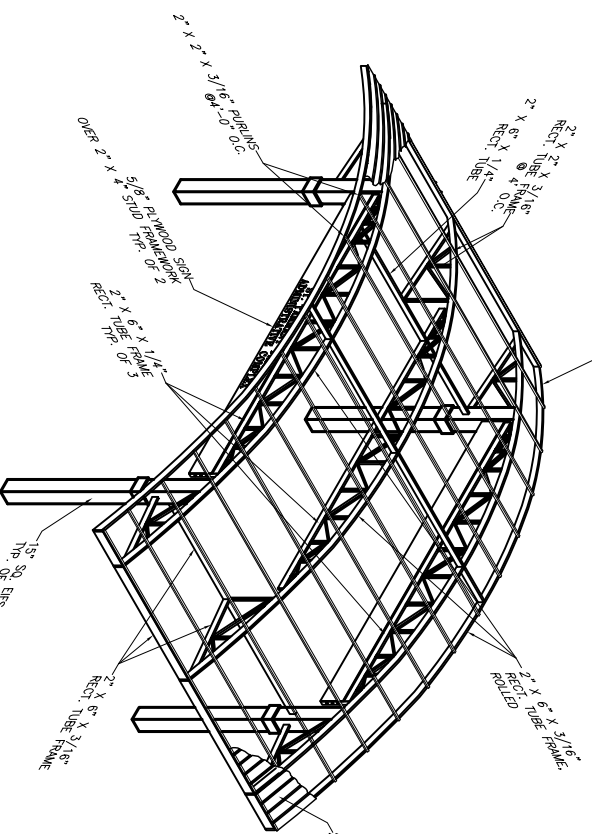


**DETAIL 3**  
SCALE: 1/4" = 1'-0"



**PORTE COCHERE FRAMING PLAN**  
SCALE: 1/8" = 1'-0"

**PORTE COCHERE ISOMETRIC**



**TRUSS ASSEMBLY**  
SCALE: 1/4" = 1'-0"

**SECTION B**  
SCALE: 1" = 1'-0"

REVISED: 02/19/07

<p>RENOVATE OFFICE BUILDING</p> <p><b>DAMMON ENGINEERING, INC.</b></p> <p>1095 FLORIDA AVENUE 985-649-5832 SLIDELL, LA. 70458 DAMMONENGINEERING.COM</p>		<p><b>PORTE COCHERE PLAN &amp; DETAILS</b></p> <p>ST. TAMMANY PARISH ADMIN COMPLEX 520 OLD SPANISH TRAIL SLIDELL, LOUISIANA</p>
<p>FILE: SCALE: AS NOTED</p>	<p>JOB NO. DATE: 1-8-07</p>	<p>SHEET 3 OF 3</p>