

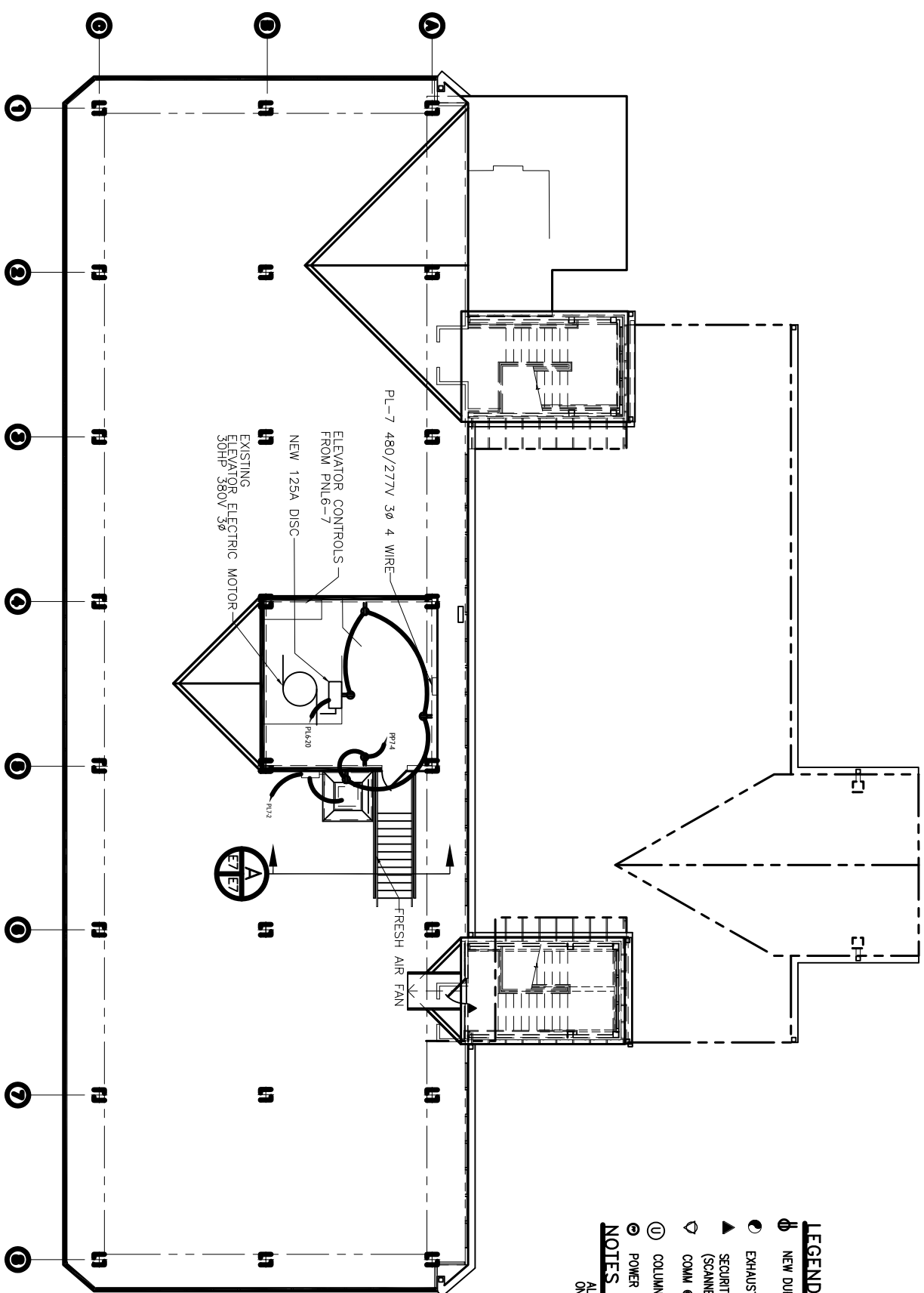
ALTERNATE BID #2

HVAC FAN COIL UNITS
IN LIEU OF VAV SYSTEM

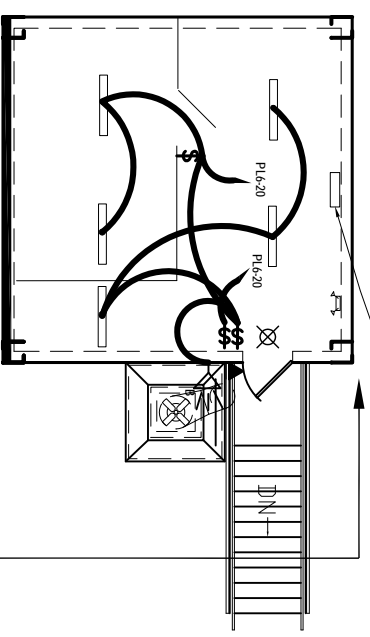
- NOTES:
1. ONLY WORK PERTAINING TO HVAC SYSTEM IS PART OF ALTERNATE #2. ALL OTHER WORK IS PART OF BASE BID.

- LEGEND**
- Ⓢ NEW DUPLEX RECEPTACLE
 - Ⓢ SINGLE POLE SWITCH
 - Ⓢ EXHAUST FAN
 - Ⓢ THREE-WAY SWITCH
 - Ⓢ SECURITY ACCESS DOOR (SCANNER BY OTHERS)
 - Ⓢ EXIT LIGHT FIXTURE (BATTERY BACK UP), (SCANNER BY OTHERS)
 - Ⓢ COMM @ DATA
 - Ⓢ COLUMN MOUNTED UTILITY
 - Ⓢ POWER AND COMM POLE
 - Ⓢ TWO TUBE 4' FLUORESCENT
 - Ⓢ OUTSIDE FLOOD WORK LIGHTS 120/240 V 250W HPS W/ BATTERY BACKUP

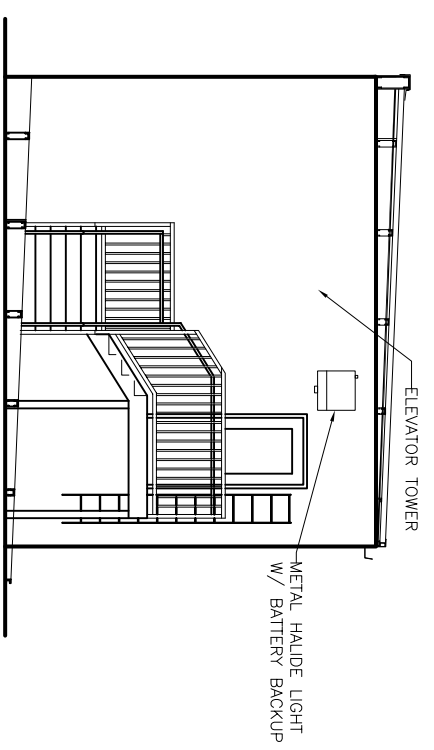
- NOTES**
- ALL NEW POWER PANELS ARE TO BE MOUNTED ON THE NORTH WALL OF THE MECHANICAL ROOMS



ROOF ELECTRICAL PLAN
SCALE: 1/8" = 1'-0"



ELEVATOR TOWER LIGHTING PLAN



SECTION
SCALE: 1/4" = 1'-0"

REVISED: 05/17/07dab
REVISED: 03/07/07ab
REVISED: 03/07/07ab

<p>RENOVATE OFFICE BUILDING</p> <p>DAMMON ENGINEERING. INC.</p> <p>1095 FLORIDA AVENUE 985-649-5832 SLIDELL, LA. 70458 DAMMONENGINEERING.COM</p>	<p>ROOF ELECTRICAL PLAN</p> <p>ST. TAMMANY PARISH ADMIN. COMPLEX 520 OLD SPANISH TRAIL SLIDELL, LOUISIANA</p>	<p>SCALE: AS NOTED</p> <p>FILE:</p> <p>JOB NO. 1729</p> <p>DATE: 1-8-07</p> <p>SHEET</p>	<p>OF</p> <p style="font-size: 2em;">E7</p>
---	--	--	---