

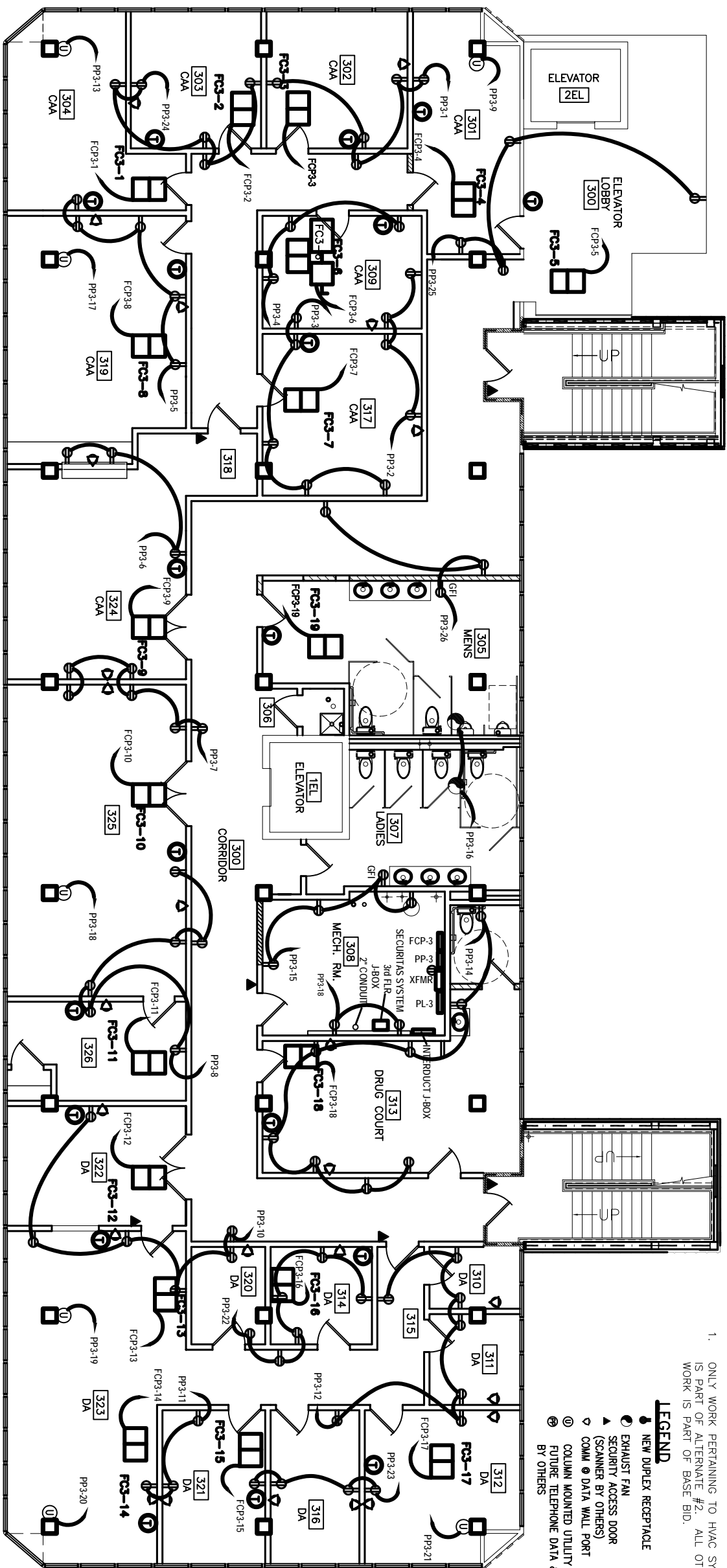
NOTES
 ALL NEW POWER PANELS ARE TO BE MOUNTED ON THE NORTH WALL OF THE MECHANICAL ROOMS IN LIEU OF VAV SYSTEM

ALTERNATE BID #2

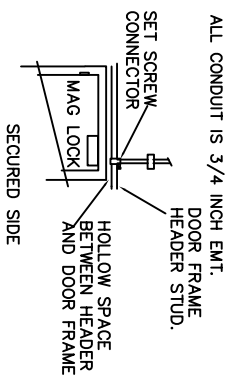
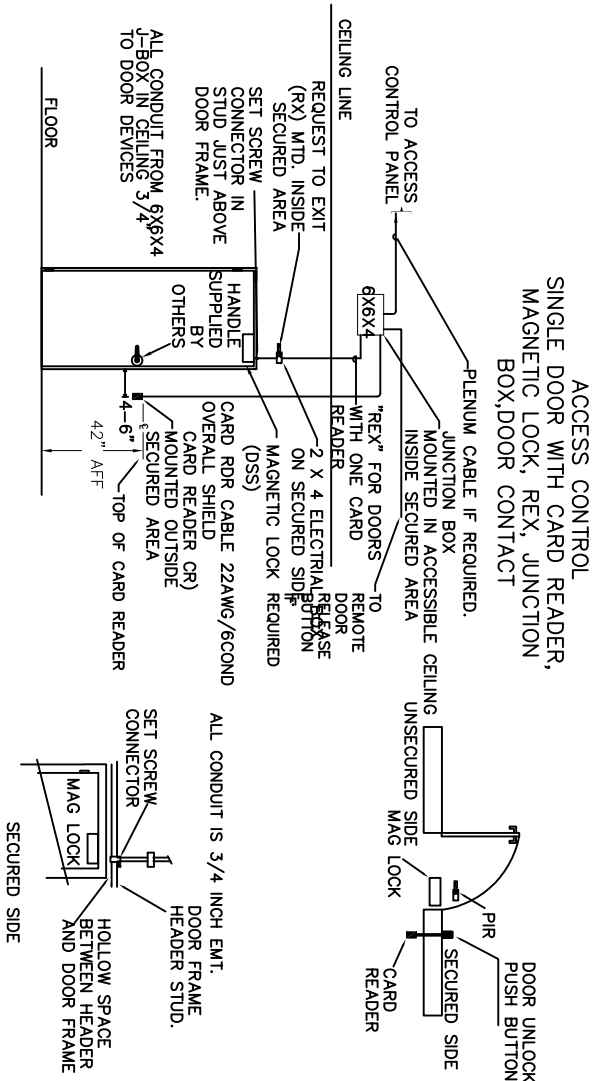
1. ONLY WORK PERTAINING TO HVAC SYSTEM IS PART OF ALTERNATE #2. ALL OTHER WORK IS PART OF BASE BID.

NOTES:

- LEGEND**
- NEW DUPLEX RECEPTACLE
 - EXHAUST FAN
 - ▲ SECURITY ACCESS DOOR (SCANNER BY OTHERS)
 - ◊ COMM @ DATA WALL PORT
 - ⊙ COLUMN MOUNTED UTILITY DATA AND POWER FUTURE TELEPHONE DATA & POWER POLES BY OTHERS

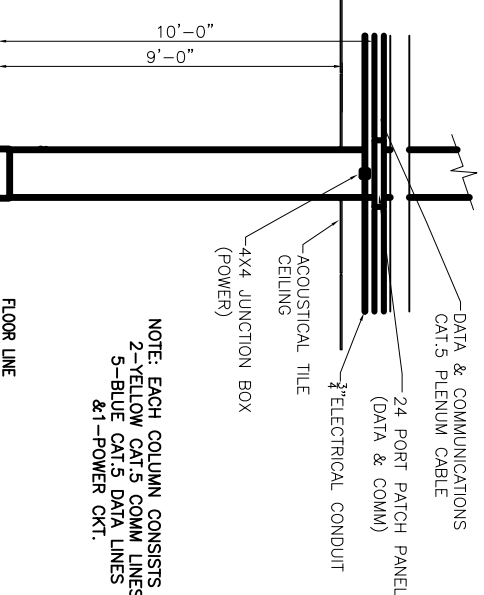


THIRD FLOOR POWER PLAN
 SCALE: 3/16" = 1'-0"



COLUMN MOUNTED UTILITY DETAIL

SCALE: NTS



NOTE: EACH COLUMN CONSISTS OF 2-YELLOW CAT.5 COMM LINES 5-BLUE CAT.5 DATA LINES & 1-POWER CKT.

REVISED: 05/17/07ab
 REVISED: 05/07/07ab
 REVISED: 01/23/07

RENOVATE OFFICE BUILDING

DAMMON ENGINEERING, INC.

1095 FLORIDA AVENUE 985-649-5832 SLIDELL, LA. 70458
 DAMMONENGINEERING.COM

3RD FLOOR POWER PLAN
 ST. TAMMANY PARISH ADMIN. COMPLEX
 OLD SPANISH TRAIL
 SLIDELL, LOUISIANA

SCALE: AS NOTED
FILE:
JOB NO. 1729
DATE: 1-8-07
SHEET
E3P
OF