

1ST FLOOR HVAC EQUIPMENT SCHEDULE - FAN COILS

1ST FLOOR RM #	FAN COIL NUMBER	COOLING LOAD (BTUH) SENS	LOAD LATENT TOTAL	GPM WATER (BASED ON TOTAL LOAD)	CFM SPECIFIED	HEAT LOAD BTUH	HEATER STRIP/OUT/AIR WATTS	FAN COIL TYPE (BASED ON CARRIER) 40" EWT 75" HX 3" SPACE
113	FC-1-1	10,547	2,888	13,415	2.7	13,590	3,982	60 42CE04-4 ROW COIL
107	FC-1-2	3,597	1,632	5,229	1.0	5,469	1,602	40 42CE03-3 ROW COIL
MEZZ	FC-1-3	18,097	6,373	24,470	7.5	19,800	5,801	400 42CE09-4 ROW COIL
MEZZ	FC-1-4	18,097	6,373	24,470	7.5	19,800	5,801	400 42CE09-4 ROW COIL
MEZZ	FC-1-5	18,097	6,373	24,470	7.5	19,800	5,801	400 42CE09-4 ROW COIL
110	FC-1-6	25,813	0	25,813	5.2	24,750	7,252	0 42CE10-4 ROW COIL
120	FC-1-7	14,371	1,912	16,283	6.6	6,660	1,951	0 42CE12-4 ROW COIL
110	FC-1-8	25,813	0	25,813	5.2	24,750	7,252	0 42CE10-4 ROW COIL
110	FC-1-9	25,813	0	25,813	5.2	24,750	7,252	0 42CE10-4 ROW COIL
104	FC-1-10	8,177	1,912	10,089	2.0	10,260	3,006	0 42CE03-4 ROW COIL
TOTALS		168,422	27,443	195,865	50.4	8,300	169,629	49,700
			TONS= 9.9					277 V / 120 / 60 Hz

ALTERNATE BID #2

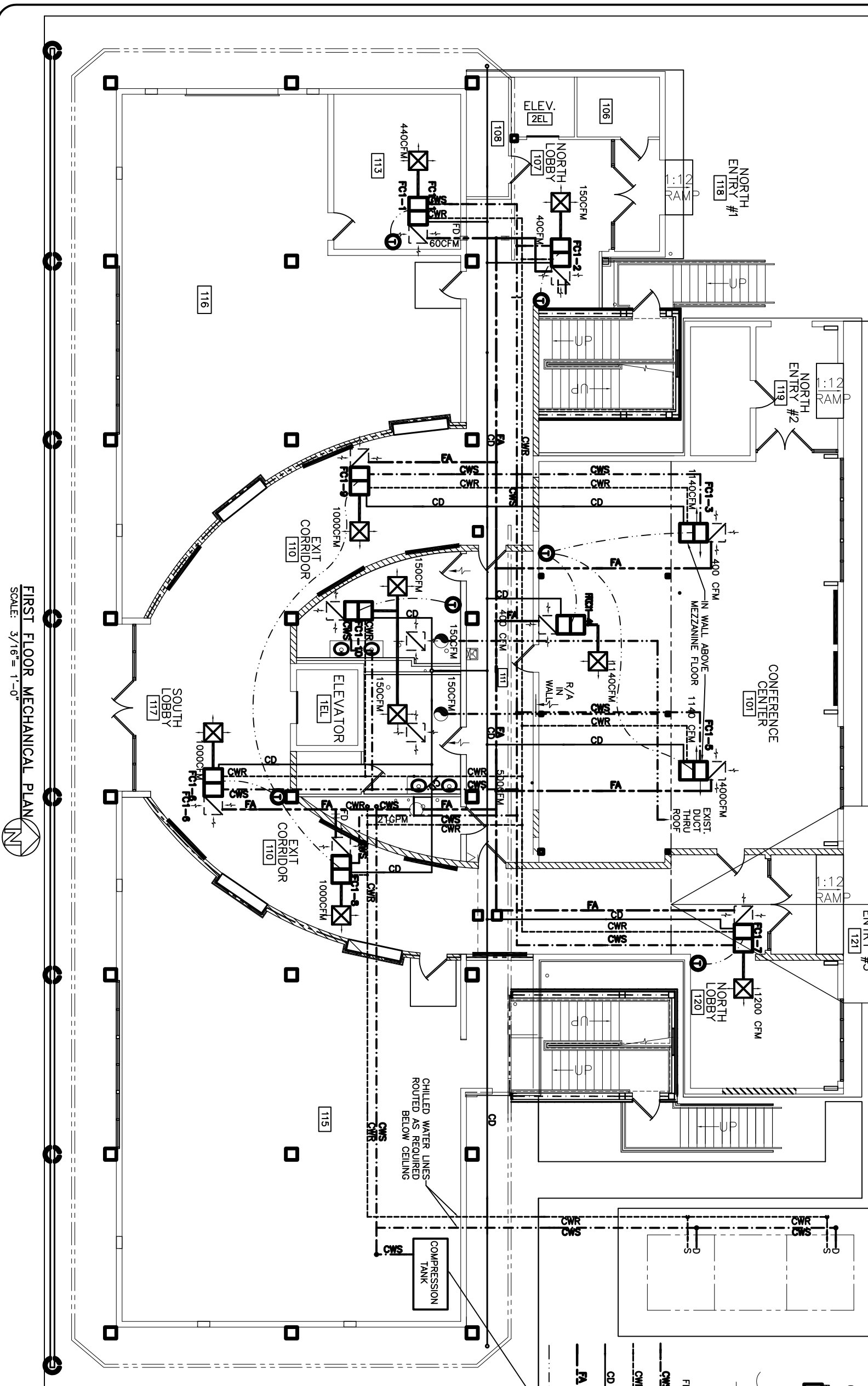
NOTES
SEE DWG. M-9 "CHILLED WATER RISER DIAGRAM" FOR PIPE SIZES.
SEE DWG. M-11 "OUTSIDE AIR RISER DIAGRAM" FOR DUCT SIZES.
CONDENSATE LINES MAY BE RUN DIRECTLY TO DRAIN ON SAME FLOOR WHERE SUFFICIENT DROP IS AVAILABLE.
INSULATE ALL PIPING.
5 FT. LONG HVAC FLEX HOSE MAY BE SUBSTITUTED AT DUCT RUN ENDS.

NOTES:
1. ONLY WORK PERTAINING TO HVAC SYSTEM IS PART OF ALTERNATE #2. ALL OTHER WORK IS PART OF BASE BID.

LEGEND

- ⊠ - HVAC REGISTER 24X24
- ⊠ - AIR RETURN REGISTER
- ⊠ - EXHAUST FAN
- ⊠ - HVAC FAN COIL UNIT
- ⊠ - THERMOSTAT NEAR FAN COIL RETURN
- ⊠ - HVAC FLEX HOSE. NOT TO EXCEED 5' IN LENGTH.
- ⊠ - WALL AIR RETURN
- ⊠ - AUTO SHUT-OFF DAMPER
- ⊠ - FIRE DAMPER
- ⊠ - CHILLED WATER SUPPLY
- ⊠ - CHILLED WATER RETURN
- ⊠ - CONDENSATE DRAIN
- ⊠ - FRESH AIR
- ⊠ - THERMOSTAT WIRE
- ⊠ - COMPRESSOR TANK - MOUNTED UNDER 1ST FLOOR CEILING. SEE DETAIL.

NOTE:
SIZE F. A. DUCT TO ALLOW FOR 1200 FT/ MIN. VELOCITY.



FIRST FLOOR MECHANICAL PLAN

SCALE: 3/16" = 1'-0"

REVISED: 05/17/07
REVISED: 04/26/07
REVISED: 03/07/07
REVISED: 02/23/07

1ST FLOOR MECHANICAL PLAN
ST. TAMMANY PARISH ADMIN. COMPLEX
520 OLD SPANISH TRAIL
SLIDELL, LOUISIANA

RENOVATE OFFICE BUILDING
DAMMON ENGINEERING. INC.
1095 FLORIDA AVENUE 985-649-5832 SLIDELL, LA. 70458
DAMMONENGINEERING.COM

SCALE: AS NOTED
FILE:
JOB NO. 1729
DATE: 1-8-07
SHEET
M-1
OF