

5th FLOOR HVAC EQUIPMENT SCHEDULE - FAN COILS

5th FLOOR	FAN COIL NUMBER	SENS	COOLING LOAD (BTU/H)	HEATING LOAD (BTU/H)	WATTS	HEATER STRIP KW	OUTAIR CFM	FAN COIL TYPE	
RM #	NUMBER	SENS	LATENT TOTAL	(BASED ON TOTAL)	BTU/H	WATTS	CFM	(BASED ON CARRIER)	
501	FC 5-1	22,382	3,186	25,568	8,600	2,520	3,0KW	70 42CE10-4 ROW COIL	
501	FC 5-2	22,382	3,186	25,568	8,600	2,520	3,0KW	70 42CE10-4 ROW COIL	
501	FC 5-3	22,382	3,186	25,568	8,600	2,520	3,0KW	70 42CE10-4 ROW COIL	
507	FC 5-4	15,118	2,868	17,986	4,890	1,433	1.5KW	60 42CE08-4 ROW COIL	
500	FC 5-5	7,083	0	7,083	300	11,823	3,464	40 42CE03-3 ROW COIL	
502	FC 5-6	16,127	2,448	18,575	675	5,315	1,557	60 42CE06-4 ROW COIL	
508	FC 5-7	23,827	3,059	26,886	5,940	1,740	2.0KW	60 42CE10-4 ROW COIL	
508	FC 5-8	23,827	3,059	26,886	5,940	1,740	2.0KW	60 42CE10-4 ROW COIL	
508	FC 5-9	22,627	2,485	25,112	950	6,525	1,912	2.0KW	60 42CE10-4 ROW COIL
510	FC 5-10	21,146	3,824	24,970	1,200	6,950	2,036	2.0KW	80 42CE12-3 ROW COIL
510	FC 5-11	21,146	3,824	24,970	1,200	6,950	2,036	2.0KW	80 42CE12-3 ROW COIL
510	FC 5-12	21,146	3,824	24,970	1,200	6,950	2,036	2.0KW	80 42CE12-3 ROW COIL
510	FC 5-13	21,146	3,824	24,970	1,200	6,950	2,036	2.0KW	80 42CE12-3 ROW COIL
506	FC 5-14	20,980	2,868	23,728	900	13,065	3,828	4.0KW	60 42CE10-3 ROW COIL
506	FC 5-15	7,293	1,388	8,681	300	4,308	1,262	1.5KW	20 42CE03-3 ROW COIL
503	FC 5-16	8,177	1,912	10,089	300	10,260	3,006	3.0KW	0 42CE03-4 ROW COIL
TOTALS	296,669	44,941	343,610	68.2	13,889	121,666	35,646	950 277 V / 110 / 60 Hz	
			TONS= 27.6						

ALTERNATE BID #2

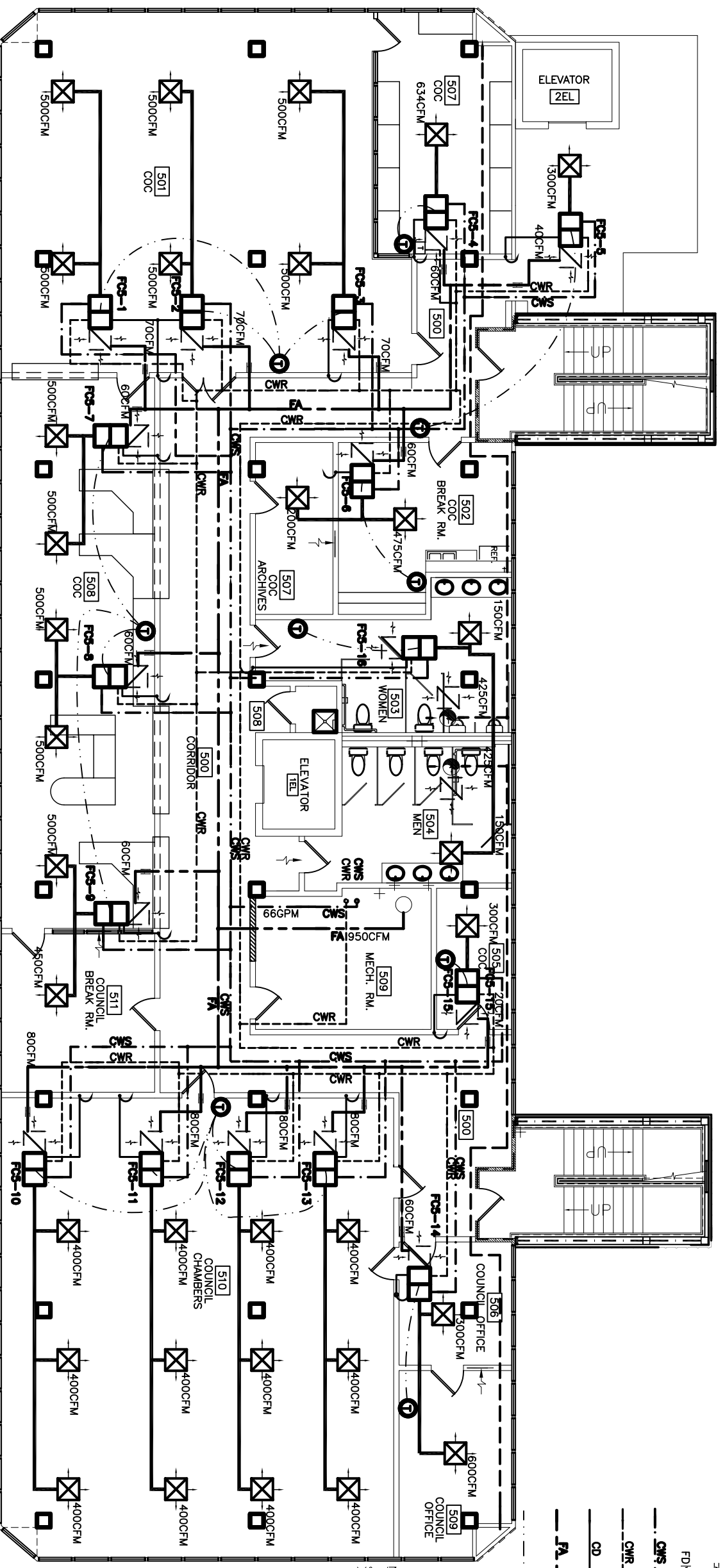
- HVAC FAN COIL UNITS
IN LIEU OF VAV SYSTEM
- NOTES:
- ONLY WORK PERTAINING TO HVAC SYSTEM IS PART OF ALTERNATE #2. ALL OTHER WORK IS PART OF BASE BID.

- NOTES
- SEE DWG. M-9 "CHILLED WATER RISER DIAGRAM" FOR PIPE SIZES.
 - SEE DWG. M-11 "OUTSIDE AIR RISER DIAGRAM" FOR DUCT SIZES.
 - CONDENSATE LINES MAY BE RUN DIRECTLY TO DRAIN ON SAME FLOOR WHERE SUFFICIENT DROP IS AVAILABLE.
 - INSULATE ALL PIPING.
 - 5 FT. LONG HVAC FLEX HOSE MAY BE SUBSTITUTED AT DUCT RUN ENDS.

LEGEND

- HVAC REGISTER 24X24
- AIR RETURN REGISTER
- EXHAUST FAN
- HVAC FAN COIL UNIT
- THERMOSTAT NEAR FAN COIL RETURN
- HVAC FLEX HOSE. NOT TO EXCEED 5' IN LENGTH.
- WALL AIR RETURN
- AUTO SHUT-OFF DAMPER
- FIRE DAMPER
- CHILLED WATER SUPPLY
- CHILLED WATER RETURN
- CONDENSATE DRAIN
- FRESH AIR
- THERMOSTAT WIRE

NOTE:
SIZE F. A. DUCT TO ALLOW FOR 1200 FT/ MIN. VELOCITY.



FIFTH FLOOR MECHANICAL PLAN

SCALE: 3/16" = 1'-0"



REVISED: 05/17/07ab
REVISED: 04/26/07ab
REVISED: 04/26/07ab
REVISED: 01/22/07
REVISED: 02/23/07 dd

<p>RENOVATE OFFICE BUILDING</p> <p>DAMMON ENGINEERING, INC.</p> <p>1095 FLORIDA AVENUE 986-649-5832 SLIDELL, LA. 70458 DAMMONENGINEERING.COM</p>	<p>5TH FLOOR MECHANICAL PLAN</p> <p>ST. TAMMANY PARISH ADMIN. COMPLEX 520 OLD SPANISH TRAIL SLIDELL, LOUISIANA</p>
<p>SCALE: AS NOTED</p> <p>FILE:</p> <p>JOB NO.</p> <p>DATE: 1-9-07</p> <p>SHEET</p> <p>M-5</p> <p>OF</p>	