

6th FLOOR HVAC EQUIPMENT SCHEDULE - FAN COILS

6th FLOOR RM #	FAN COIL NUMBER	COOLING LOAD (BTU/H)	HEATING LOAD (BTU/H)	FAN COIL TYPE						
		SENS	LATENT TOTAL	(BASED ON TOTAL)	CFM SPECIFIED	HEAT LOAD BTU/H	HEATER STRIP/OUTAIR WATTS	FAN COIL TYPE (BASED ON CARRIER)		
611	FC 6-1	29,191	3,585	32,776	6.6	1,200	17,716	5,191	6.0KW	80 42CE12-4 ROW COIL *
611	FC 6-2	29,191	3,585	32,776	6.6	1,200	17,716	5,191	6.0KW	80 42CE12-4 ROW COIL *
611	FC 6-3	29,191	3,585	32,776	6.6	1,200	17,716	5,191	6.0KW	80 42CE12-4 ROW COIL *
601	FC 6-4	24,431	4,302	28,733	5.7	1,000	17,716	5,191	6.0KW	80 42CE12-4 ROW COIL *
601	FC 6-5	24,431	4,302	28,733	5.7	1,000	17,716	5,191	6.0KW	80 42CE12-4 ROW COIL *
601	FC 6-6	24,431	4,302	28,733	5.7	1,000	17,716	5,191	6.0KW	80 42CE12-4 ROW COIL *
602	FC 6-7	4,081	1,632	5,713	1.1	300	6,735	1,973	2.0KW	40 42CE03-3 ROW COIL
602	FC 6-8	8,487	1,912	10,399	2.1	300	6,735	1,973	2.0KW	40 42CE03-3 ROW COIL
608	FC 6-9	7,366	1,912	9,278	1.9	300	2,720	797	1.0KW	40 42CE03-4 ROW COIL
612	FC 6-10	23,596	2,888	26,484	5.3	1,000	9,040	2,649	3.0KW	80 42CE10-4 ROW COIL
613	FC 6-11	23,239	9,560	32,799	6.6	990	18,792	5,506	6.0KW	200 42CE10-4 ROW COIL
613	FC 6-12	23,239	9,560	32,799	6.6	1,000	18,792	5,506	6.0KW	200 42CE10-4 ROW COIL
606	FC 6-13	2,984	2,984	5,968	4.9	920	15,485	4,537	5.0KW	80 42CE10-3 ROW COIL
610	FC 6-14	9,016	1,912	10,928	2.2	400	3,080	887	1.0KW	40 42CE04-3 ROW COIL
609	FC 6-15	7,349	856	8,205	1.7	300	4,590	1,345	1.5KW	20 42CE03-3 ROW COIL
STARWELL	FC 6-16	21,600	40,800	62,400	12.5	900	20,325	5,955	6.0KW	0 42CE12-4 ROW COIL
STARWELL	FC 6-17	21,600	40,800	62,400	12.5	900	20,325	5,955	6.0KW	0 42CE12-4 ROW COIL
603	FC 6-18	8,177	1,912	10,089	2.0	300	10,260	3,006	3.0KW	0 42CE03-4 ROW COIL
TOTALS	345,348	139,152	484,500	97.2	14,460	214,993	65,922	1,220,277 V./107,60 Hz		* FUTURE UNITS

ALTERNATE BID #2

HVAC FAN COIL UNITS IN LIEU OF VAV SYSTEM

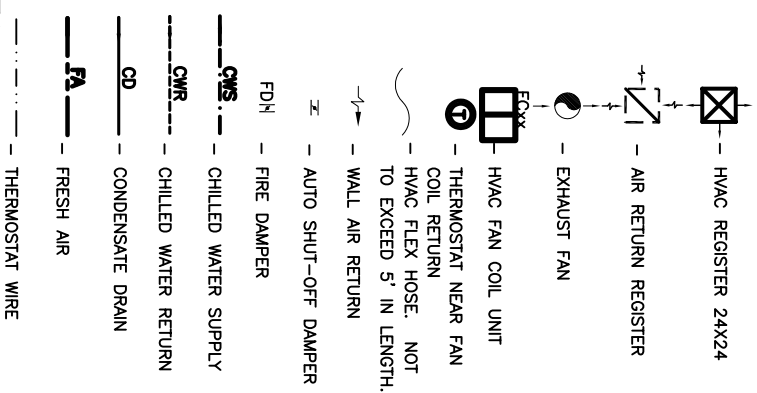
NOTES:

- ONLY WORK PERTAINING TO HVAC SYSTEM IS PART OF ALTERNATE #2. ALL OTHER WORK IS PART OF BASE BID.

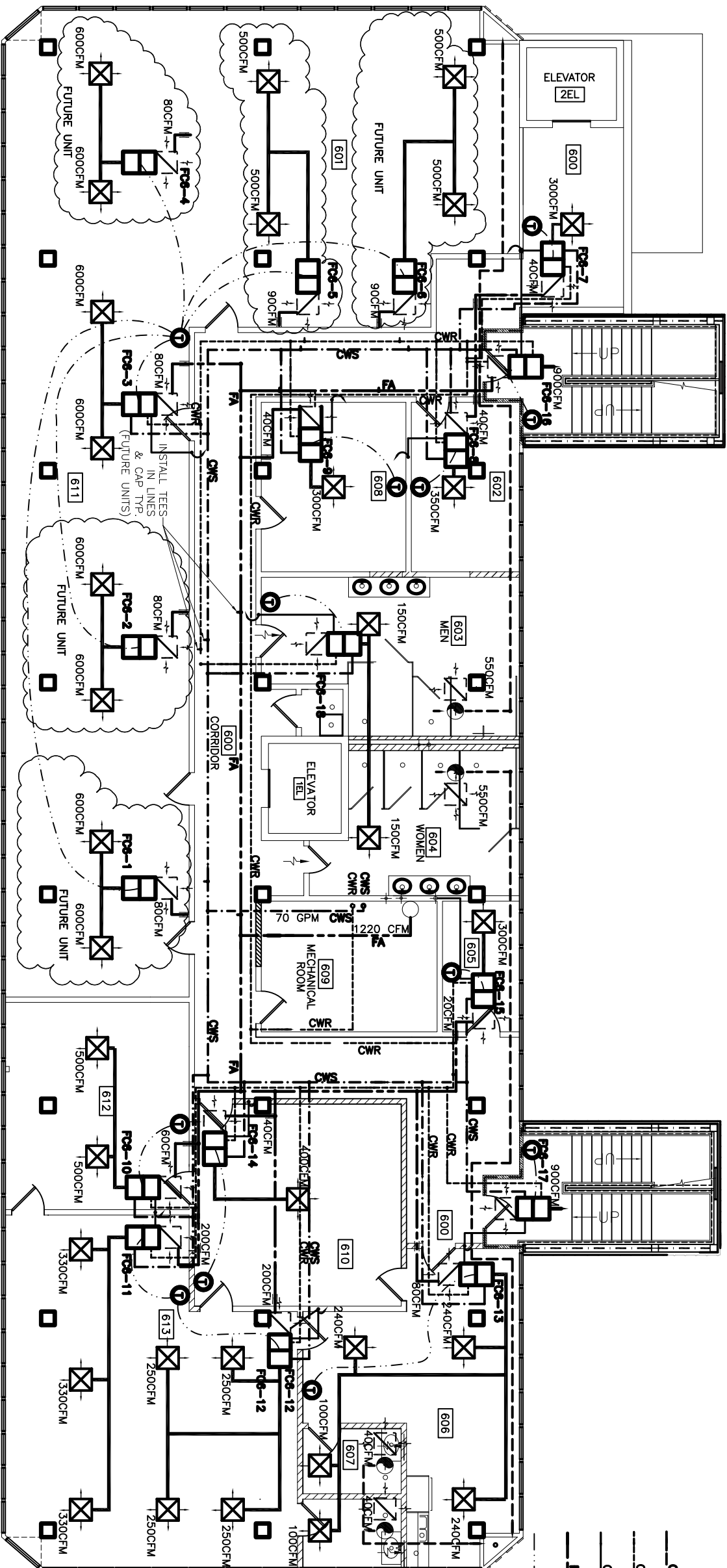
NOTES

- ONLY WORK PERTAINING TO HVAC SYSTEM IS PART OF ALTERNATE #2. ALL OTHER WORK IS PART OF BASE BID.
- SEE DWG. M-9 "CHILLED WATER RISER DIAGRAM" FOR PIPE SIZES.  
SEE DWG. M-11 "OUTSIDE AIR RISER DIAGRAM" FOR DUCT SIZES.  
CONDENSATE LINES MAY BE RUN DIRECTLY TO DRAIN ON SAME FLOOR WHERE SUFFICIENT DROP IS AVAILABLE.  
INSULATE ALL PIPING.  
5 FT. LONG HVAC FLEX HOSE MAY BE SUBSTITUTED AT DUCT RUN ENDS.

LEGEND



NOTE:  
SIZE F.A. DUCT TO ALLOW FOR 1200 FT/ MIN. VELOCITY.



SIXTH FLOOR MECHANICAL PLAN



SCALE: 3/16" = 1'-0"

REVISED: 05/17/07ab  
REVISED: 05/07/07ab  
REVISED: 04/26/07ab  
REVISED: 01/22/07

6TH FLOOR MECHANICAL PLAN

ST. TAMMANY PARISH ADMIN. COMPLEX  
520 OLD SPANISH TRAIL  
SLIDEELL, LOUISIANA

RENOVATE OFFICE BUILDING

**DAMMON ENGINEERING. INC.**

1095 FLORIDA AVENUE 985-649-5832 SLIDEELL, LA. 70468  
DAMMONENGINEERING.COM

SCALE: AS NOTED

FILE:

JOB NO. 1729

DATE: 1-8-07

SHEET

M-6

OF