

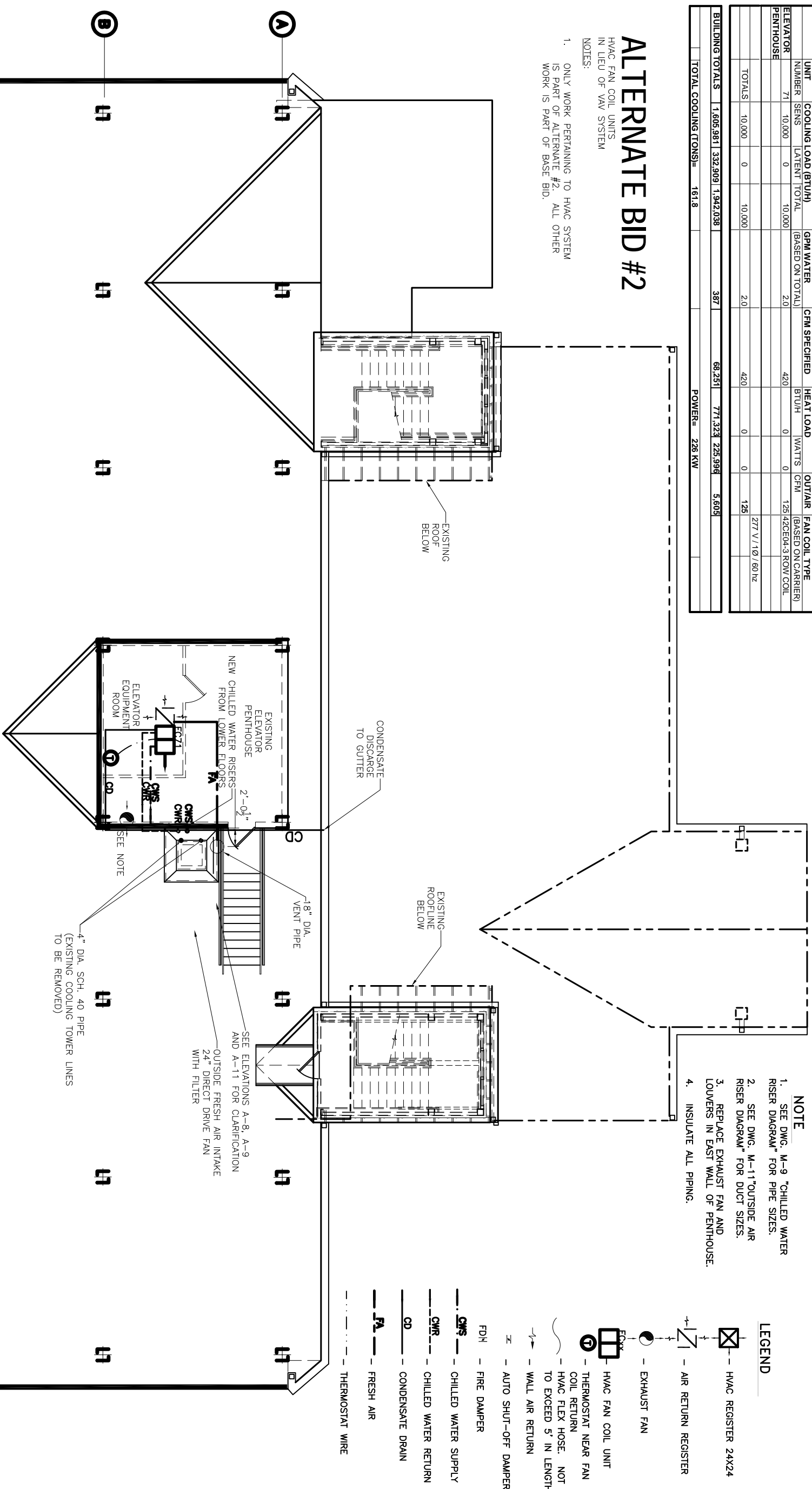
PENTHOUSE HVAC EQUIPMENT SCHEDULE - FAN COILS

UNIT NUMBER	COOLING LOAD (BTU/H)	GPM WATER (BASED ON TOTAL)	CFM SPECIFIED	HEAT LOAD (BTU/H)	WATTS	OUT/AIR CFM	FAN COIL TYPE (BASED ON CARRIER)
ELEVATOR	71	10,000	0	10,000	2.0	420	125 (42CE04-3 ROW COIL)
PENTHOUSE							277 V / 10 / 60 Hz
TOTALS	10,000	0	10,000	420	0	0	125
<b>BUILDING TOTALS</b>	<b>1,605,981</b>	<b>332,909</b>	<b>1,942,038</b>	<b>387</b>	<b>68,251</b>	<b>771,323</b>	<b>228,996</b>
<b>TOTAL COOLING (TONS)</b>	<b>161.8</b>					<b>POWER = 226 KW</b>	

## ALTERNATE BID #2

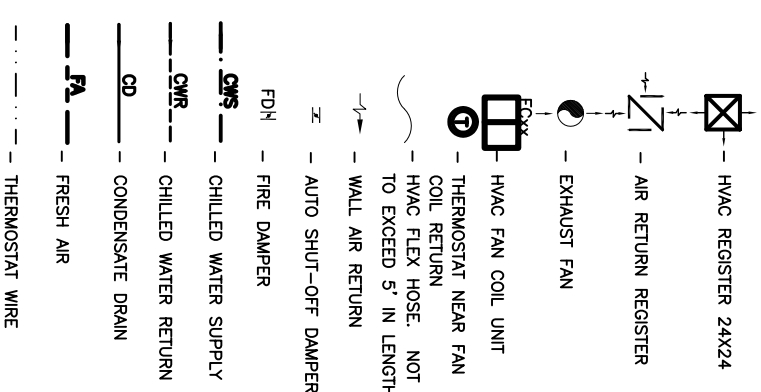
HVAC FAN COIL UNITS  
IN LIEU OF VAV SYSTEM

- NOTES:
- ONLY WORK PERTAINING TO HVAC SYSTEM IS PART OF ALTERNATE #2. ALL OTHER WORK IS PART OF BASE BID.



- NOTE
- SEE DWG. M-9 "CHILLED WATER RISER DIAGRAM" FOR PIPE SIZES.
  - SEE DWG. M-11 "OUTSIDE AIR RISER DIAGRAM" FOR DUCT SIZES.
  - REPLACE EXHAUST FAN AND LOUVERS IN EAST WALL OF PENTHOUSE.
  - INSULATE ALL PIPING.

LEGEND



### ROOF MECHANICAL PLAN

SCALE: 3/16" = 1'-0"



NOTE:  
SIZE F, A, DUCT TO ALLOW FOR  
1200 FT/ MIN. VELOCITY.

REVISED: 05/17/07/ab  
REVISED: 05/07/07/ab  
REVISED: 04/26/07/ab  
REVISED: 03/07/07/ab  
REVISED: 1/29/07

<p>SCALE: AS NOTED</p> <p>FILE: _____</p> <p>JOB NO. 1729</p> <p>DATE: 1-8-07</p> <p>SHEET</p> <p>M-7</p> <p>OF</p>	<p>RENOVATE OFFICE BUILDING</p> <h1>DAMMON ENGINEERING, INC.</h1> <p>1095 FLORIDA AVENUE 985-649-5832 SLIDELL, LA. 70458 DAMMONENGINEERING.COM</p>	<p>ROOF MECHANICAL PLAN</p> <p>ST. TAMMANY PARISH ADMIN. COMPLEX 520 OLD SPANISH TRAIL SLIDELL, LOUISIANA</p>
---	--	---