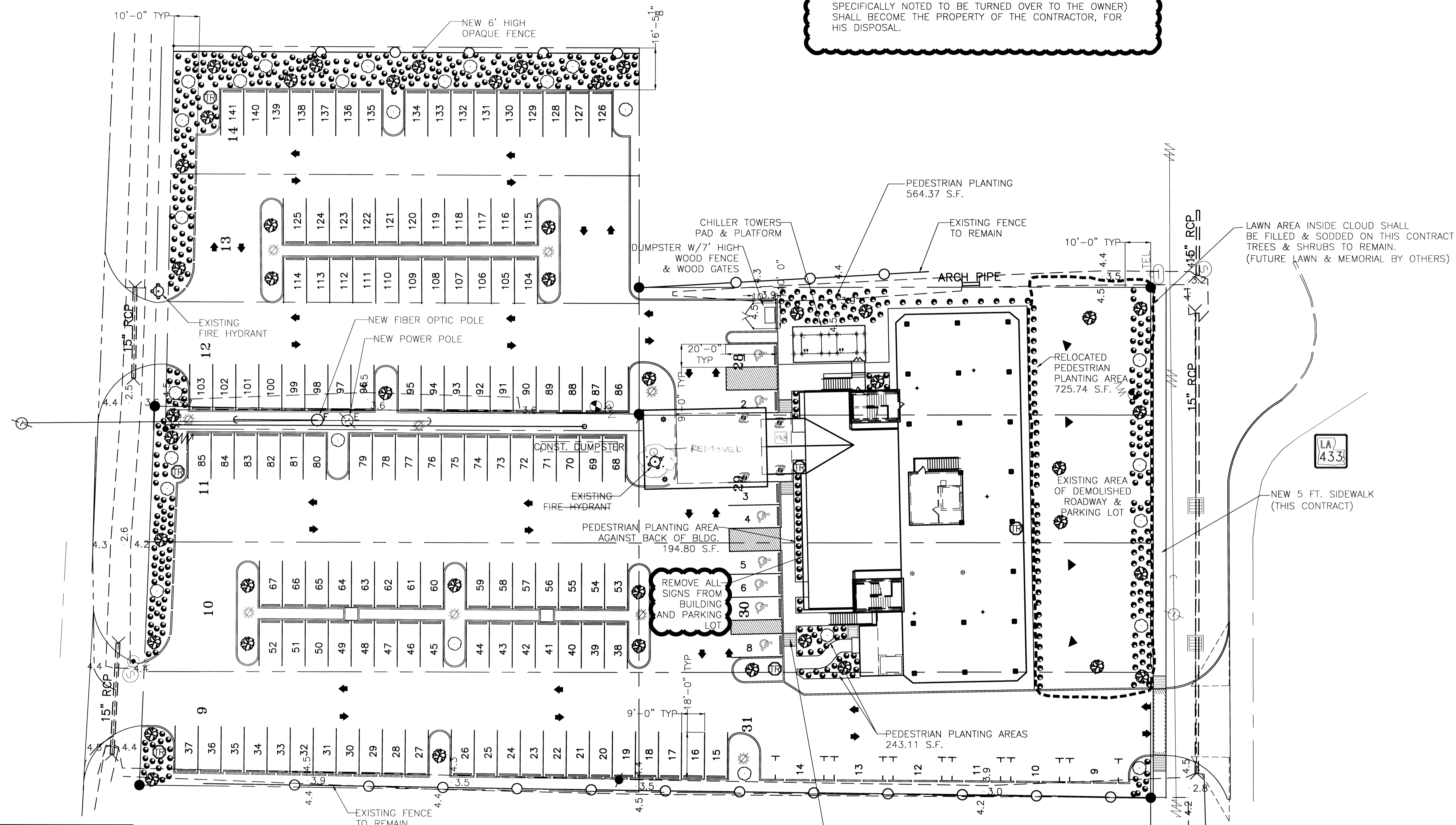


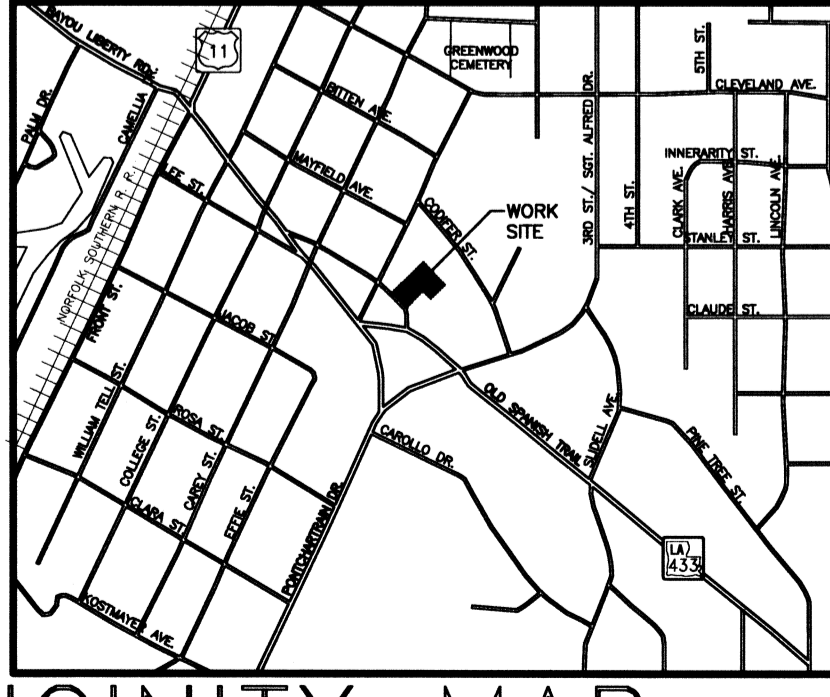
SGT. ALFRED DRIVE

NOTE:
ALL EXISTING TRASH, FURNITURE, COMPUTERS, STORED ITEMS IN THE BUILDING AND ON GROUNDS (EXCEPT FOR ITEMS SPECIFICALLY NOTED TO BE TURNED OVER TO THE OWNER) SHALL BECOME THE PROPERTY OF THE CONTRACTOR, FOR HIS DISPOSAL.



LAWN AREA INSIDE CLOUD SHALL BE FILLED & SODDED ON THIS CONTRACT TREES & SHRUBS TO REMAIN. (FUTURE LAWN & MEMORIAL BY OTHERS)

REMOVE ALL SIGNS FROM BUILDING AND PARKING LOT



VICINITY MAP
N. T. S.

NOTE:
TREES ALONG THE WEST SIDE OF THE PROPERTY, IN THE DITCH AND INSIDE OR ON THE PROPERTY LINE SHALL BE REMOVED. TREES THAT OVERHANG THE PARKING AREAS SHALL BE TRIMMED TO THE PROPERTY LINE. STORM BLOWN TRASH WEST OF PROPERTY LINE AND WITHIN 5 FEET OF PROPERTY LINE SHALL BE REMOVED.

REQUIRED PEDESTRIAN PLANTING: 1103.84 S.F.
SUPPLIED PEDESTRIAN PLANTING: 1728.02 S.F.

SITE PLAN
SCALE: 1"=20'-0"

-PARKING REQUIREMENT-
TOTAL AREA= 42,928 SQ. FT.
TOTAL USABLE AREA= 34,246 SQ. FT.
171 PARKING SPACES REQUIRED, 1 PER 200 SQ. FT.
9 ACCESSIBLE, 3 VAN SPACES

PREVIOUSLY AVAILABLE-90 SPACES

-FURNISHED-
141 PARKING SPACES FURNISHED
7 ACCESSIBLE, 4 VAN SPACES

"DETECTABLE WARNING" ON RAMP SURFACES CUT 1/4" DEEP GROOVES THAT ARE SPACED 1" TO 3" ON CENTER AND SCORED INTO CONCRETE. PAINT CONTRASTING COLOR. INSTALL HDCP SIGNS TYP

- LEGEND**
- CENTERLINE OF ROAD
 - - - PROPERTY LINE
 - - - NEW BUILDING
 - - - EXISTING FENCE LINE
 - SETBACK LINE
 - ☉ CREPE MYRTLE
 - SHUMARD OAK
 - ⊙ LARGE CAMELLIA
 - ⊙ HORN BEAM
 - SHRUB
 - NEW DROP INLET
 - ▲ LANDSCAPE UPLIGHT
 - ☼ LIGHT POLE
 - TRASH RECEPTACLE
- ☁ = ADDENDUM 2 CHANGE

ADDENDUM 2 REVISED: 08-20-07ab
REVISED: 03-01-07ab
REVISED: 02-27-07

PROPOSED SITE PLAN
ST. TAMMANY PARISH OFFICE BUILDING
520 OLD SPANISH TRAIL
SLIDELL, LOUISIANA

RENOVATE OFFICE BUILDING
DAMMON ENGINEERING, INC.
1095 FLORIDA AVENUE 985-649-5832 SLIDELL, LA. 70458
DAMMONENGINEERING.COM

SCALE: 1"=20'
FILE:
JOB NO. 1729
DATE: 1-8-07
SHEET
C-3
OF