

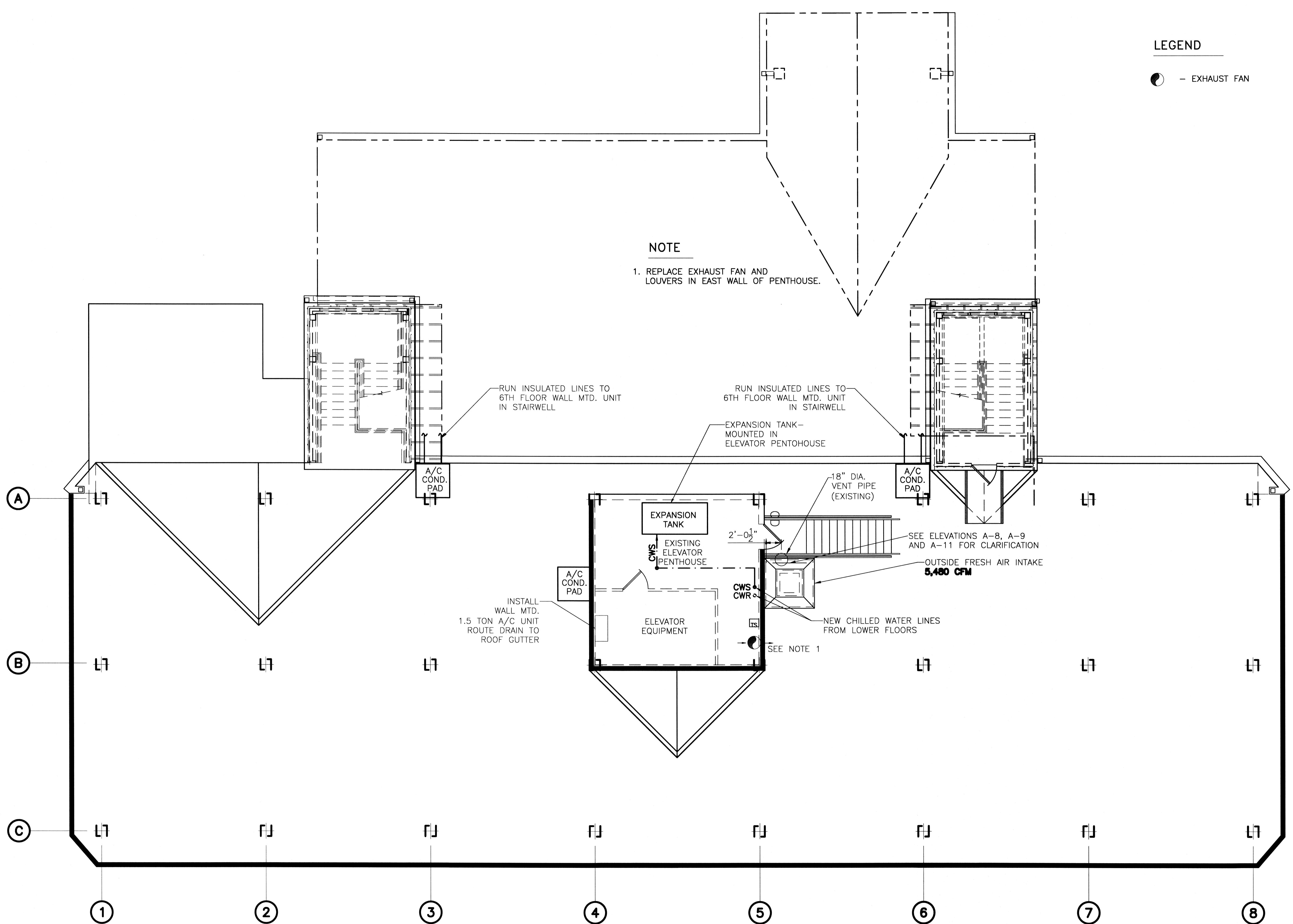
- SEE MECHANICAL SUBMITTALS FOR AS BUILTS -

LEGEND

☉ - EXHAUST FAN

NOTE

1. REPLACE EXHAUST FAN AND LOUVERS IN EAST WALL OF PENTHOUSE.



RUN INSULATED LINES TO 6TH FLOOR WALL MTD. UNIT IN STAIRWELL

RUN INSULATED LINES TO 6TH FLOOR WALL MTD. UNIT IN STAIRWELL

EXPANSION TANK - MOUNTED IN ELEVATOR PENTHOUSE

18" DIA. VENT PIPE (EXISTING)

SEE ELEVATIONS A-8, A-9 AND A-11 FOR CLARIFICATION

OUTSIDE FRESH AIR INTAKE 5,480 CFM

NEW CHILLED WATER LINES FROM LOWER FLOORS

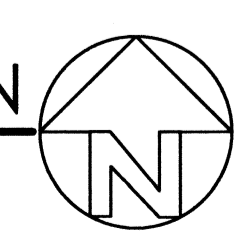
SEE NOTE 1

INSTALL WALL MTD. 1.5 TON A/C UNIT ROUTE DRAIN TO ROOF GUTTER

12X9 INDICATES ITEMS CHANGED - 02/26/08

ROOF MECHANICAL PLAN

SCALE: 3/16" = 1'-0"



HVAC REVISED: 02/26/08ab
HVAC REVISED: 11/05/07ab
REVISED: 06/04/07ab
REVISED: 05/10/07ab
REVISED: 05/02/07ab
REVISED: 04/09/07ab
REVISED: 03/07/07ab
REVISED: 1/29/07

ROOF MECHANICAL PLAN
ST. TAMMANY PARISH ADMIN. COMPLEX
520 OLD SPANISH TRAIL
SLIDELL, LOUISIANA

RENOVATE OFFICE BUILDING
DAMMON ENGINEERING, INC.
1095 FLORIDA AVENUE 985-649-5832 SLIDELL, LA. 70458
DAMMONENGINEERING.COM

SCALE: AS NOTED

FILE:

JOB NO. 1729

DATE: 1-8-07

SHEET

M-7

OF

RFP #2 11-13-07