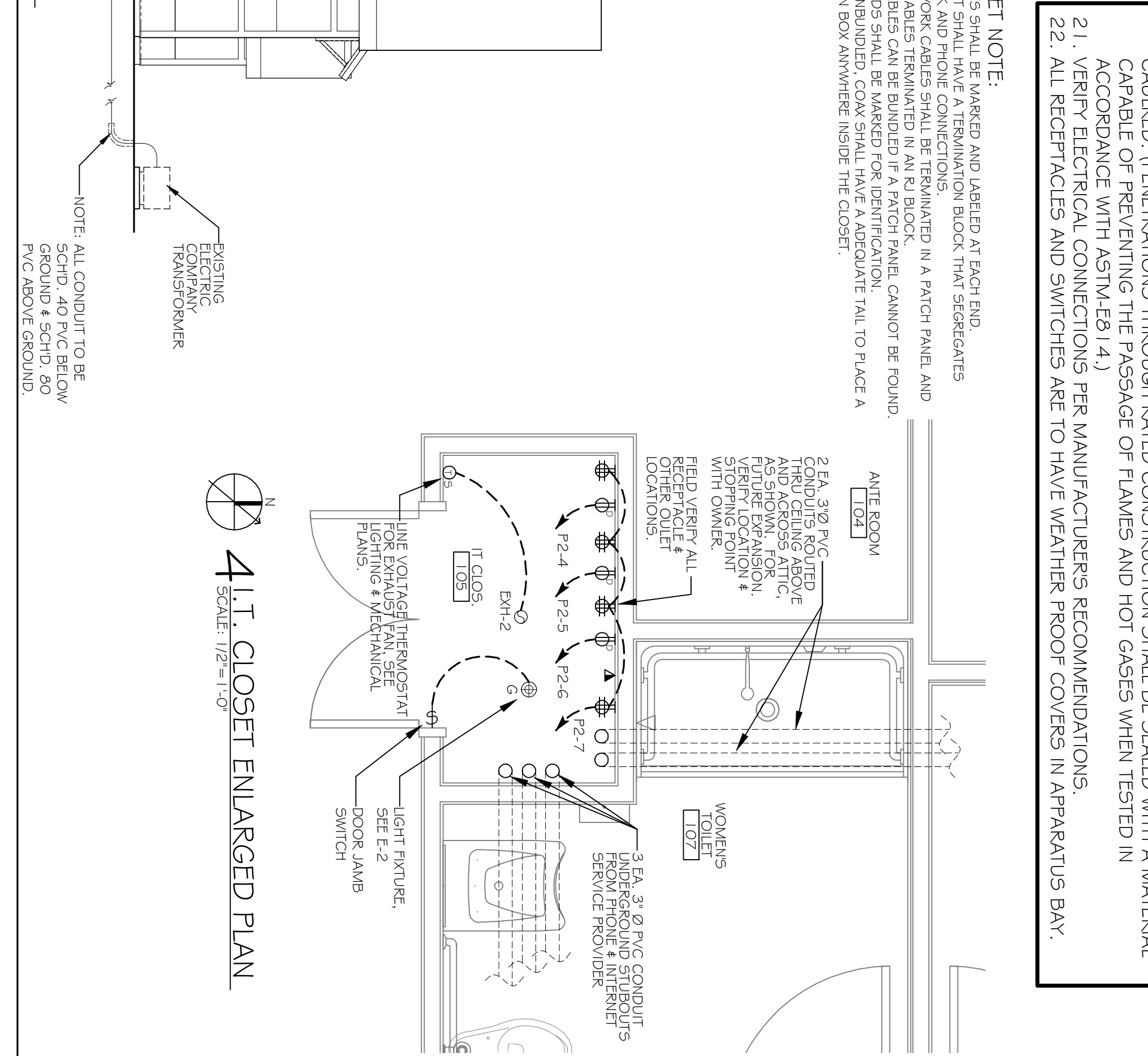
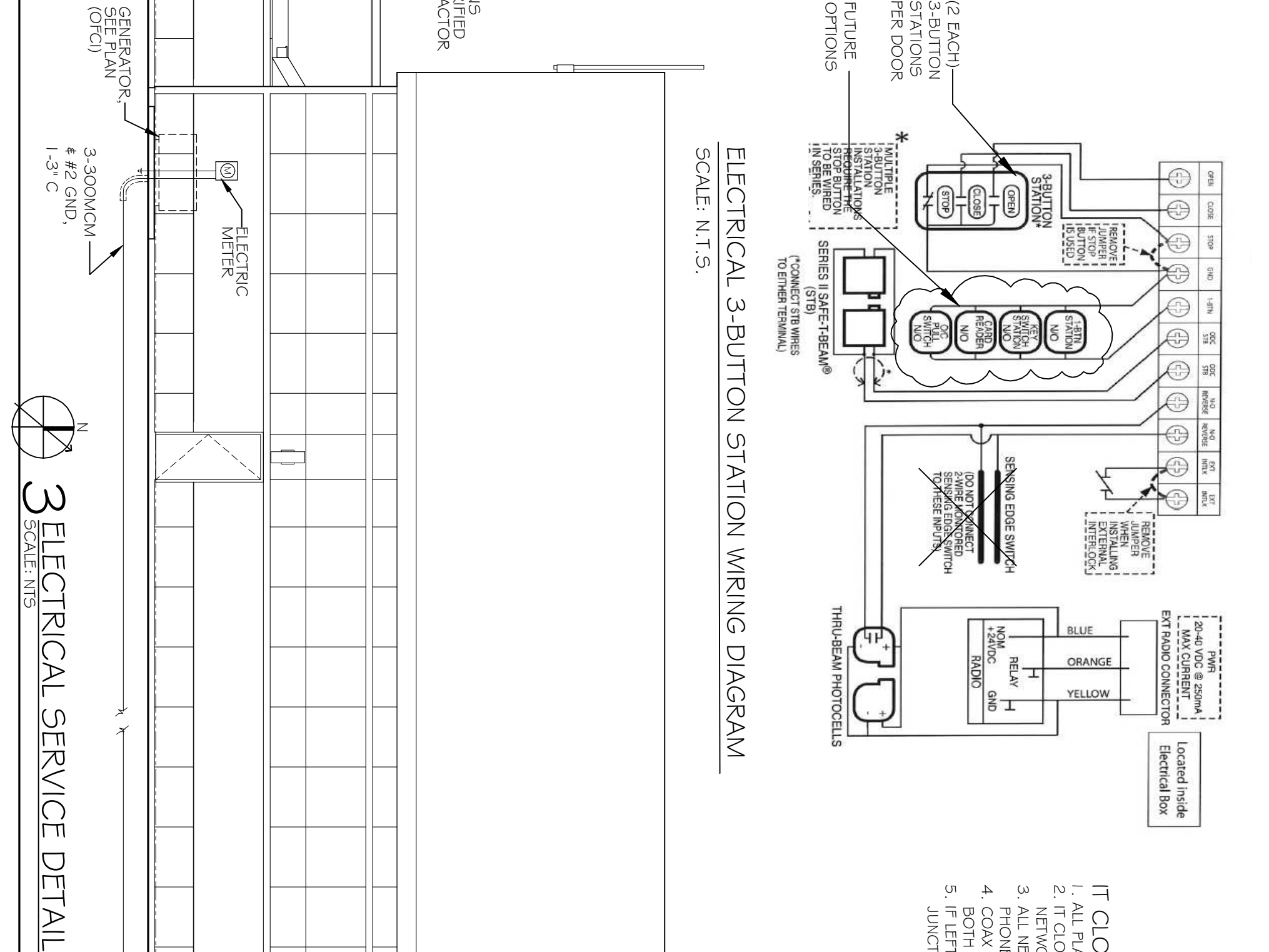
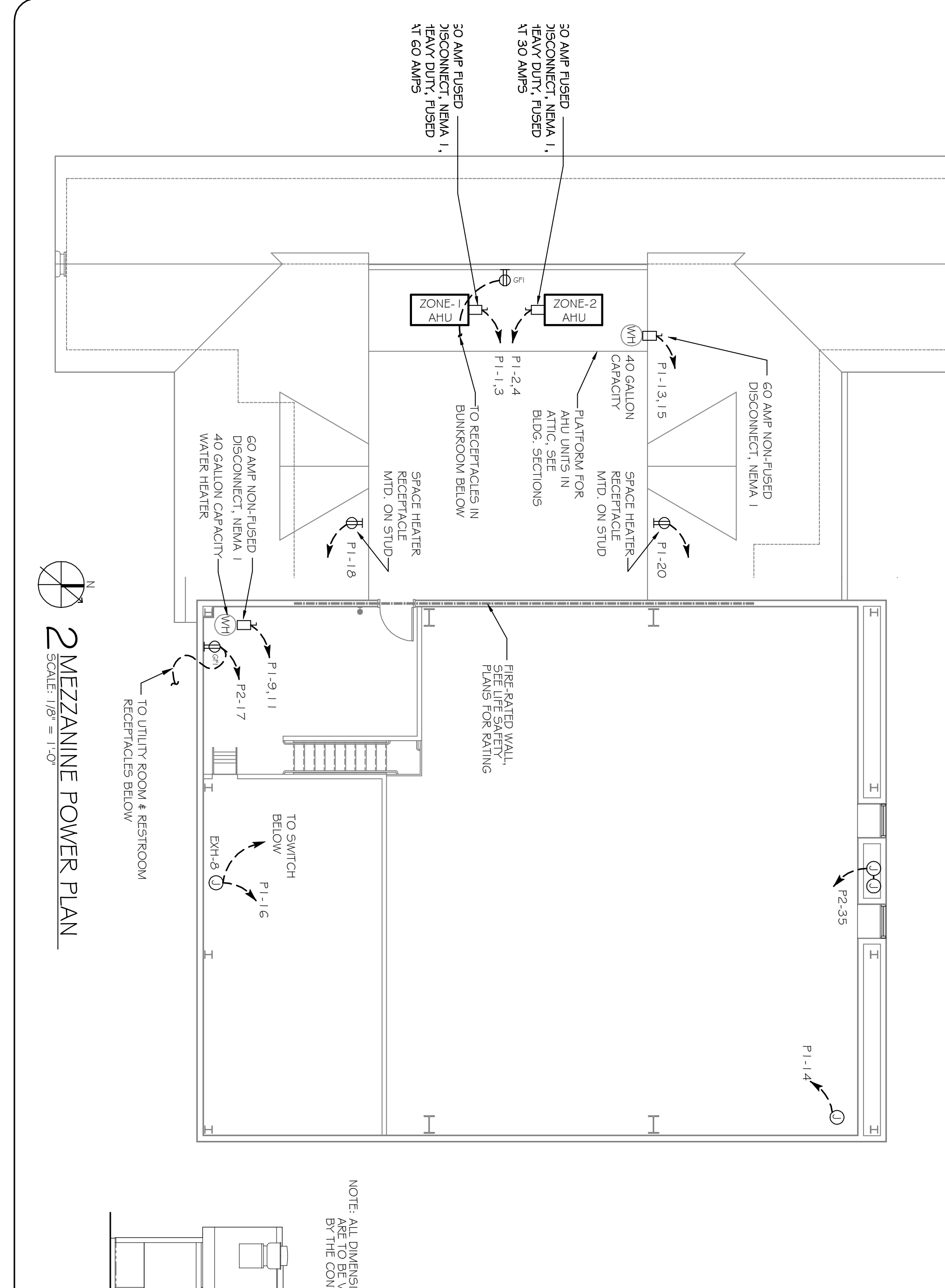
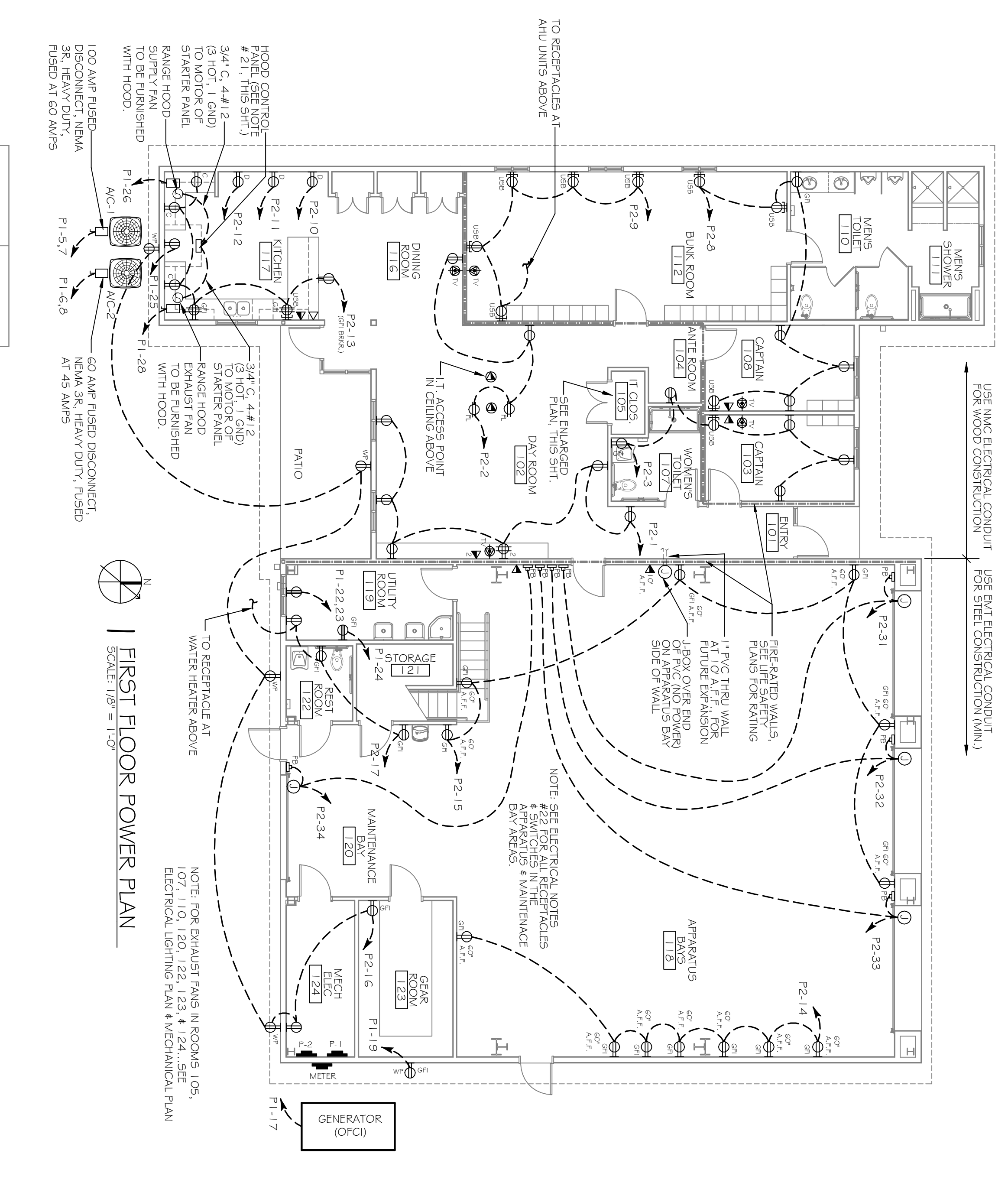


SYM.	DESCRIPTION	COMMENTS
⊖	STANDARD 120V DUPLEX RECEPTACLE, NEMA 5-2 OR 1Ø/1H (UNLESS OTHERWISE NOTED)	
⊖	DEDICATED RECEPTACLE	
⊖	SEE PANEL SCHEDULE FOR CIRCUIT SIZE	
⊖	GFI RECEPTACLE	ALL OUTLETS WITHIN 4Ø' OF A WATER SOURCE SHALL BE GFI
⊖	220V DRYER RECEPTACLE	
⊖	220V GFI RECEPTACLE (ICE MACHINES)	
⊖	WEATHER PROOF 120V DUPLEX RECEPT. @ 3Ø' WAF (UNLESS NOTED)	
⊖	RECEPTACLE @ 6' ABOVE COUNTER	
⊖	DUPLEX FLOOR RECEPTACLE, 120V	
⊖	QUAD RECEPTACLE	ALL OUTLETS WITHIN 4Ø' OF A WATER SOURCE SHALL BE GFI
⊖	QUAD GFI RECEPTACLE	
⊖	125V 1/5 AMP DUPLEX/USB SVDC 3 AMP HUBBELL USB CHARGER RECEPTACLE	VERIFY LOCATION WITH OWNER PRIOR TO INSTALLATION
⊖	125V 1/5 AMP QUAD/USB SVDC 3 AMP HUBBELL USB CHARGER RECEPTACLE	VERIFY LOCATION WITH OWNER PRIOR TO INSTALLATION
⊖	FLOOR DATA	
⊖	WALL DATA	
⊖	TELEPHONE	
⊖	CABLE/TELEVISION	
⊖	JUNCTION BOX	
⊖	SWITCH	
⊖	3-WAY SWITCH	
⊖	3-BUTTON (PUSH-BUTTON) STATION	
⊖	POWER DISCONNECT	
⊖	ELECTRIC WATER HEATER	
⊖	AIR CONDITIONING COND. UNIT SEE MECH SHEETS FOR UNIT DETAILS	

- ### ELECTRICAL NOTES
- ALL WORK SHALL CONFORM TO THE LATEST EDITION OF THE NATIONAL ELECTRICAL CODE, THE GOVERNING ELECTRICAL CODE AND ALL OTHER INSPECTION DEPARTMENTS HAVING JURISDICTION. OBTAIN CERTIFICATES OR APPROVAL WHERE REQUIRED. ELECTRICAL CONTRACTOR SHALL VERIFY ALL WIRE AND CONDUIT SIZES FOR MECHANICAL EQUIPMENT TO BE INSTALLED TO CONFORM TO THE LATEST EDITION OF THE N.E.C.
 - ALL MATERIALS FURNISHED SHALL BE NEW AND SHALL BE U.L. LISTED. SCALE DIMENSIONS SHALL NOT BE USED. THE EXACT LOCATION AND LOCATION OF ALL LIGHTING FIXTURES, RECEPTACLES AND TELEPHONE OUTLETS, ETC. SHALL BE DETERMINED BY ACTUAL CONDITIONS IN THE FIELD.
 - CONTRACTOR SHALL VISIT THE JOB SITE AND FAMILIARIZE THEMSELVES WITH THE EXISTING CONDITIONS.
 - ELECTRICAL CONTRACTOR SHALL COORDINATE HIS WORK WITH OTHER TRADES AND WITH OTHER CONTRACTORS WHOSE WORK MAY AFFECT THIS INSTALLATION.
 - ELECTRICAL CONTRACTOR SHALL COORDINATE INCOMING ELECTRICAL SERVICE WITH UTILITY COMPANY AND INCLUDE IN HIS BID ALL CHARGES AND FEES INCURRED IN MODIFICATIONS WHERE MORE THAN ONE SWITCH OCCURS IN THE SAME LOCATION. THEY SHALL BE INSTALLED IN A GANG TYPE BOX UNDER ONE COVER PLATE.
 - ELECTRICAL CONTRACTOR SHALL COORDINATE THE TELEPHONE INSTALLATION WITH THE TELEPHONE COMPANY AND THE GENERAL CONTRACTOR.
 - NOT INTERFERE WITH CLEARANCES REQUIRED FOR FINISHED COLUMNS, HUNG CEILING, PLASTER PARTITIONS, WALLS, ETC. AS SHOWN IN THE ARCHITECTURAL DRAWINGS AND DETAILS. IF ANY WORK IS INSTALLED AND IT LATER DEVELOPS THAT SUCH DETAILS OR DESIGN CANNOT BE FOLLOWED, THE CONTRACTOR, AT HIS OWN EXPENSE, SHALL MAKE SUCH CHANGES IN THE ARCHITECTURAL WORK AS SHOWN ON THE PLANS AND DETAILS.
 - PERFORM TEST REQUIRED BY THE OWNER OR THE ENGINEER IN CONNECTION WITH THE OPERATION OF THE ELECTRICAL SYSTEM IN THE BUILDING.
 - ALL TESTS SHALL BE MADE IN ACCORDANCE WITH THE LATEST STANDARD OF THE IEEE AND THE NATIONAL ELECTRICAL CODE.
 - MINIMUM CONDUCTOR SIZE SHALL BE #12. 600V INSULATION. MINIMUM SIZE CONDUIT SHALL BE 3/4" ELECTRICAL METALLIC TUBING (EMT) FOR INTERIOR USE, AND 3/4" RIGID ALUMINUM FOR EXTERIOR USE. USE NON-METALLIC CABLE (NM-C) CABLE COPPER. FOR LIGHTS AND RECEPTACLE CIRCUITS IN WOOD FRAME CONSTRUCTION AREAS ONLY, IN STEEL FRAMING AREAS THE USE OF EMT (MINIMUM) IS REQUIRED. EXTERIOR FITTINGS SHALL BE CAST BOXES AND COVERS. INTERIOR FITTINGS SHALL BE STAMPED BOXES WITH WEATHERPROOF BOXES WHERE EXPOSED ON WALLS IN THE APPARATUS BAY. STAMPED BOXES MAY BE USED ABOVE CEILINGS IN AIR CONDITIONED SPACES.
 - CONTRACTOR SHALL INSTALL WIRING AND OTHER CIRCUIT COMPONENTS TO MATCH EQUIPMENT ACTUALLY INSTALLED.
 - INSTALL GROUND FAULT RECEPTACLES AT RECEPTACLE LOCATIONS WITHIN 5' OF SINKS OR LAVATORIES, AND AT EXTERIOR LOCATIONS. EXTERIOR RECEPTACLES SHALL ALSO BE WATERPROOF.
 - BONDING AND GROUNDING SHALL BE IN ACCORDANCE WITH NFPA 70:230-63, NFPA 250-23, 250-71 & 250-72.
 - GROUND NEUTRAL IN ACCORDANCE WITH NFPA 70:250-23b.
 - FUSERS SHALL BE ITT CLASS KS, 250 VOLT, 200.00 AMP INTERRUPTING CAP.
 - PROVIDE SERVICES OF A FIRE/ALARM DETECTION AND ALARM COMPANY TO DESIGN AND INSTALL ALARM SYSTEM TO MEET REQUIREMENTS OF THE STATE FIRE MARSHALL.
 - EXTERIOR LIGHTING SHALL BE SHADDED OR INWARDLY DIRECTED IN SUCH A MANNER SO THAT NO DIRECT LIGHTING OR GLARE IS CAST BEYOND THE PROPERTY LINE. THE INTENSITY OF SUCH LIGHTING SHALL NOT EXCEED ONE FOOT CANDLE AS MEASURED AT THE ABUTTING PROPERTY LINE.
 - ALL ELECTRICAL, MECHANICAL AND PLUMBING PENETRATING FIRE PARTITIONS SHALL BE FIRE CAULKED. PENETRATIONS THROUGH RATED CONSTRUCTION SHALL BE SEALED WITH A MATERIAL CAPABLE OF PREVENTING THE PASSAGE OF FLAMES AND HOT GASES WHEN TESTED IN ACCORDANCE WITH ASTM E814.
 - VERIFY ELECTRICAL CONNECTIONS PER MANUFACTURERS RECOMMENDATIONS.
 - ALL RECEPTACLES AND SWITCHES ARE TO HAVE WEATHER PROOF COVERS IN APPARATUS BAY.

POWER PLAN LEGEND

SYM.	DESCRIPTION	COMMENTS
⊖	STANDARD 120V DUPLEX RECEPTACLE, NEMA 5-2 OR 1Ø/1H (UNLESS OTHERWISE NOTED)	
⊖	DEDICATED RECEPTACLE	
⊖	SEE PANEL SCHEDULE FOR CIRCUIT SIZE	
⊖	GFI RECEPTACLE	ALL OUTLETS WITHIN 4Ø' OF A WATER SOURCE SHALL BE GFI
⊖	220V DRYER RECEPTACLE	
⊖	220V GFI RECEPTACLE (ICE MACHINES)	
⊖	WEATHER PROOF 120V DUPLEX RECEPT. @ 3Ø' WAF (UNLESS NOTED)	
⊖	RECEPTACLE @ 6' ABOVE COUNTER	
⊖	DUPLEX FLOOR RECEPTACLE, 120V	
⊖	QUAD RECEPTACLE	ALL OUTLETS WITHIN 4Ø' OF A WATER SOURCE SHALL BE GFI
⊖	QUAD GFI RECEPTACLE	
⊖	125V 1/5 AMP DUPLEX/USB SVDC 3 AMP HUBBELL USB CHARGER RECEPTACLE	VERIFY LOCATION WITH OWNER PRIOR TO INSTALLATION
⊖	125V 1/5 AMP QUAD/USB SVDC 3 AMP HUBBELL USB CHARGER RECEPTACLE	VERIFY LOCATION WITH OWNER PRIOR TO INSTALLATION
⊖	FLOOR DATA	
⊖	WALL DATA	
⊖	TELEPHONE	
⊖	CABLE/TELEVISION	
⊖	JUNCTION BOX	
⊖	SWITCH	
⊖	3-WAY SWITCH	
⊖	3-BUTTON (PUSH-BUTTON) STATION	
⊖	POWER DISCONNECT	
⊖	ELECTRIC WATER HEATER	
⊖	AIR CONDITIONING COND. UNIT SEE MECH SHEETS FOR UNIT DETAILS	



ST. TAMMANY FIRE PROTECTION DISTRICT No 1
FIRE STATION # 4
297 STEELE ROAD
SLIDELL, LA

JOB No: 2161 DATE: 2/8/2013
DRAWN BY: JL CHECKED BY: CKD

DAMMON ENGINEERING, INC.
Architects & Engineers

CHIEF ENGINEER: EMMETT DAMMON, P.E.
CHIEF ARCHITECT: KEVIN KINCHEN
554 OLD SPANISH TRAIL
SLIDELL, LA 70458

dammonengineering.com
dammoneng@slidell.oh.net
PHONE: 985-649-5832
FAX: 985-641-5950

1ST & 2ND FLOOR POWER PLANS

SHEET No: 29 OF 32

E 1