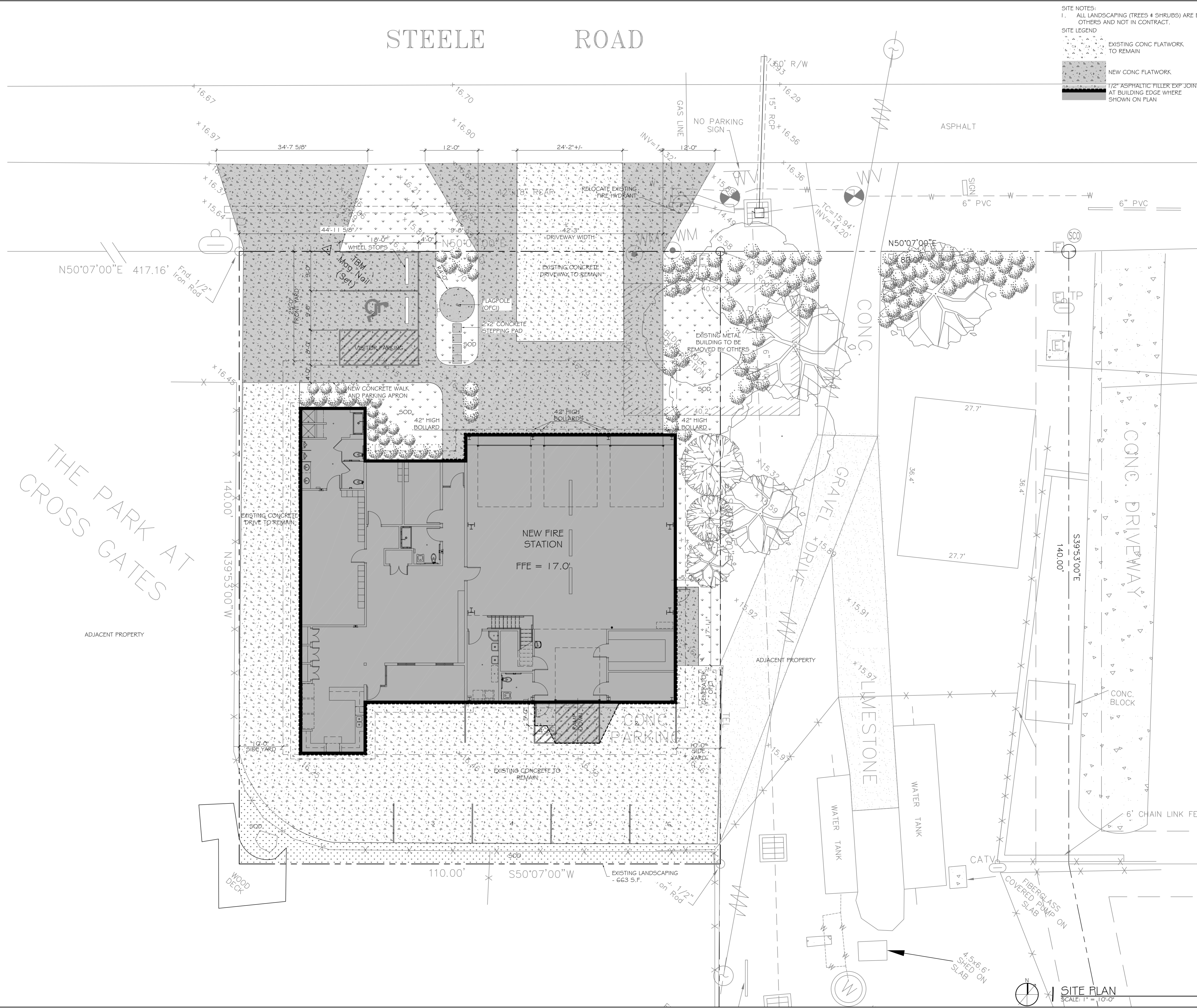


STEELE ROAD



SITE NOTES:
 1. ALL LANDSCAPING (TREES & SHRUBS) ARE BY OTHERS AND NOT IN CONTRACT.

SITE LEGEND

- EXISTING CONC FLATWORK TO REMAIN
- NEW CONC FLATWORK
- 1/2" ASPHALTIC FILLER EXP JOINT AT BUILDING EDGE WHERE SHOWN ON PLAN

THE PARK AT CROSS GATES

DAMMON ENGINEERING, INC.
Architects & Engineers

ADMINISTRATIVE: dammonengineering.com
 dammoneng@bellsouth.net
 PHONE: 985-649-5932
 554 OLD SPANISH TRAIL
 SUITE 100
 SLIDELL, LA 70458
 FAX: 985-641-5950

ST. TAMMANY FIRE PROTECTION DISTRICT No 1
 FIRE STATION # 14
 297 STEELE ROAD
 SLIDELL, LA

JOB No: 2161 DATE: 4/30/2013
 DRAWN BY: KJK CHECKED BY: KJK

#	DESCRIPTION	REVISIONS	DATE

ARCHITECTURAL SITE PLAN

SHEET No: 5 OF 32

C I

SITE PLAN
 SCALE: 1" = 10'-0"