

BUILDING CODE INFORMATION

BUILDING CODE
IBC (INTERNATIONAL BUILDING CODE) 2009

OCCUPANCY TYPE OF GROUP(S) (IBC 2009 CHAPTER 3):
RESIDENTIAL (R-2) BUSINESS STORAGE - LOW HAZARD (S-2)

CONSTRUCTION TYPE(S):
IIB 3,713 S.F.
VB 2,293 S.F.

MAXIMUM AREA (S.F.):
RESIDENTIAL (R-2) 7,000 S.F.
BUSINESS 9,000 S.F.
STORAGE (S-2) 26,000 S.F.

REQUIRED SEPARATION OF OCCUPANCIES (TABLE 508.2.5):
R-2 & B - 1 HOUR
S-2 & B - 1 HOUR

MAXIMUM AREA OF EXTERIOR WALL OPENINGS:
45%

OCCUPANT LOAD CALCULATIONS BY OCCUPANCY:
R-2 120 S.F./OCCUPANT = 9
BUSINESS 100 S.F./OCCUPANT = 13
STORAGE 200 S.F./OCCUPANT = 6
MEZZANINE 200 S.F./OCCUPANT = 4
STORAGE MEZZANINE 200 S.F./OCCUPANT = 5
TOTAL = 37

EXIT REQUIREMENTS:
FIRST FLOOR - 2 EXITS
MEZZANINE - 1 EXIT

MAXIMUM EXIT ACCESS TRAVEL DISTANCE (TABLE 1016.1):
B - 300' R-2 - 250' S-2 - 250'

MINIMUM CORRIDOR WIDTH (SECTION 1018.1 & SECTION 1005.1):
44"

MAXIMUM DEAD END CORRIDOR (SECTION 1018.4):
50'

MAXIMUM COMMON PATH OF TRAVEL (1014.3):
B & S-2 - 100' R-2 - 125'

FIRE RESISTANCE RATING REQUIREMENTS FOR BLDG. ELEMENTS: (TBL 601)
STRUCTURAL FRAME = 0 HRS.
BEARING WALLS (INTERIOR AND EXTERIOR) = 0 HRS.
NON-BEARING WALLS = 0 HRS.
FLOOR CONSTRUCTION = 0 HRS.
ROOF CONSTRUCTION = 0 HRS.

FIRE ALARM SYSTEM REQUIREMENTS: (SEC 907)
THIS BLDG. DOES NOT REQUIRE A FIRE ALARM SYSTEM

FIRE PROTECTION SYSTEM REQUIREMENTS: (SEC 903)
THIS BLDG. DOES REQUIRE A FIRE PROTECTION SYSTEM IN ACCORDANCE WITH SEC 903.2.9

CONSTRUCTION DOCUMENTS: (IBC SEC 1603)
THE METAL BLDG. SHALL BE DESIGNED IN ACCORDANCE WITH ASCE 7-10 AS A FULLY ENCLOSED BLDG. USING THE FOLLOWING INFORMATION:
RISK CATEGORY = CAT IV ESSENTIAL FACILITY
BASIC WIND SPEED (3 SECOND GUSTS) = 155 MPH
SURFACE ROUGHNESS = B
EXPOSURE CATEGORY = C
TOPOGRAPHIC FACTOR $K_{zt}=1$
MINIMUM LIVE AND DEAD LOADS SHALL BE DETERMINED IN ACCORDANCE WITH IBC
GROUND SNOW LOADS = 5 PSF (IBC)

THE CONSTRUCTION FOR SAID RESIDENCE, WHERE BASIC WIND SPEED IS 155 MILES PER HOUR, IS DESIGNED IN ACCORDANCE WITH AMERICAN FOREST AND PAPER ASSOCIATION (AF&PA) WOOD FRAME CONSTRUCTION MANUAL FOR ONE AND TWO FAMILY DWELLINGS (WFCM) 2001 EDITION AS WELL AS THE INTERNATIONAL RESIDENTIAL CODE (IRC) 2009 EDITION.

BASED ON THE SURVEY OF THIS PROPERTY BY J.V. BURKE & ASSOC., INC. REG. # 4443.
THIS PROPERTY IS NOT IN A SPECIAL FLOOD HAZARD AREA.
F.I.R.M. COMMUNITY MAP NO. 225205 0440D; DATE 4-21-99
FLOOD ZONE: C; BASE FLOOD ELEVATION N/A.

DETAILED BUILDING REQUIREMENTS (MAIN WIND FORCE RESISTING COMPONENTS)
- THE DESIGN, FABRICATION AND ERECTION OF STRUCTURAL STEEL FOR BUILDINGS AND STRUCTURES SHALL BE IN ACCORDANCE WITH EITHER THE AISC LOAD AND RESISTANCE FACTOR DESIGN SPECIFICATION FOR STRUCTURAL STEEL BUILDINGS (AISC-LRFD), AISC SPECIFICATION FOR STRUCTURAL STEEL BUILDINGS-ALLOWABLE STRESS DESIGN (AISC-ASD) OR AISC SPECIFICATION FOR THE DESIGN OF STEEL HOLLOW STRUCTURAL SECTIONS (AISC-HSS). WIND LOAD DESIGN OF 155 MPH.
- ROOF COVERING HAS BEEN DESIGNED IN ACCORDANCE WITH THE REQUIREMENTS SET FORTH IN IBC SECTION 1507.
- GLAZING FOR THIS BUILDING HAS BEEN DESIGNED TO MEET THE IMPACT RESISTANT STANDARD ASTM E 1996 AND ASTM E 1886 (IBC 1609.1.2)

CONTRACTOR NOTE!
EACH CONTRACTOR RESPONSIBLE FOR THE CONSTRUCTION OF A MAIN WIND-FORCE-RESISTING COMPONENT OF THIS BUILDING SHALL SUBMIT A WRITTEN CONTRACTOR'S STATEMENT OF RESPONSIBILITY TO THE BUILDING OFFICIAL AND OWNER PRIOR TO COMMENCEMENT OF THE WORK ON THAT COMPONENT. (IBC 1706.3)

LIFE-SAFETY INFORMATION

LIFE SAFETY CODE:
NFPA 101 LIFE SAFETY CODE 2009

OCCUPANCY:
RESIDENTIAL (ROOMING & LODGING) CHAPTER 26 S.F.
BUSINESS CHAPTER 38 S.F.
STORAGE (S-2) CHAPTER 42 S.F.

REQUIRED SEPARATION:
R/B - 1 HOUR S/B - 1 HOUR

CLASSIFICATION OF HAZARD OF CONTENTS:
ORDINARY

CONSTRUCTION TYPE(S) - (CHAPTER 8, TABLE A.8.2.1.2)
I(000)
SPRINKLERED

AREA CALCULATIONS BY OCCUPANCY:
FIRST FLOOR
RESIDENTIAL (ROOMING & LODGING) 1,026 S.F.
BUSINESS 1,251 S.F.
STORAGE 2,888 S.F.

MEZZANINE
MEZZANINE 670 S.F.
STORAGE MEZZANINE 837 S.F.

OCCUPANT LOAD CALCULATIONS BY OCCUPANCY:
RESIDENTIAL (ROOMING & LODGING) 200 S.F./OCCUPANT = 6
BUSINESS 100 S.F./OCCUPANT = 13
STORAGE 500 S.F./OCCUPANT = 6
MEZZANINE 500 S.F./OCCUPANT = 2
STORAGE MEZZANINE 500 S.F./OCCUPANT = 2
TOTAL = 29

MEANS OF EGRESS:
NUMBER OF EXITS - R-1 B-2 S-1
MINIMUM EXIT SEPARATION DISTANCE FOR REMOTELY LOCATED EXITS
1/3 DIAGONAL 25'7" (S) 21'6" (B & R)
MAXIMUM DEAD-END CORRIDOR TRAVEL DISTANCE: 50'-0"
MAXIMUM COMMON PATH OF TRAVEL DISTANCE: R - 100', B - 100', S - 100'
MAXIMUM TRAVEL DISTANCE TO EXITS: R - 75', B - 300', S - 400'
STAIR WIDTH REQUIREMENTS: 36"

HORIZONTAL EXIT:
TWO-HOUR

EXTINGUISHMENT REQUIREMENTS:
SPRINKLERED (REQUIRED)

SUBDIVISION OF BUILDING SPACE:
NONE

DETECTION/ALARM:
NONE

EXIT REQUIREMENTS:
FIRST FLOOR - 2 EXITS
MEZZANINE - 1 EXIT

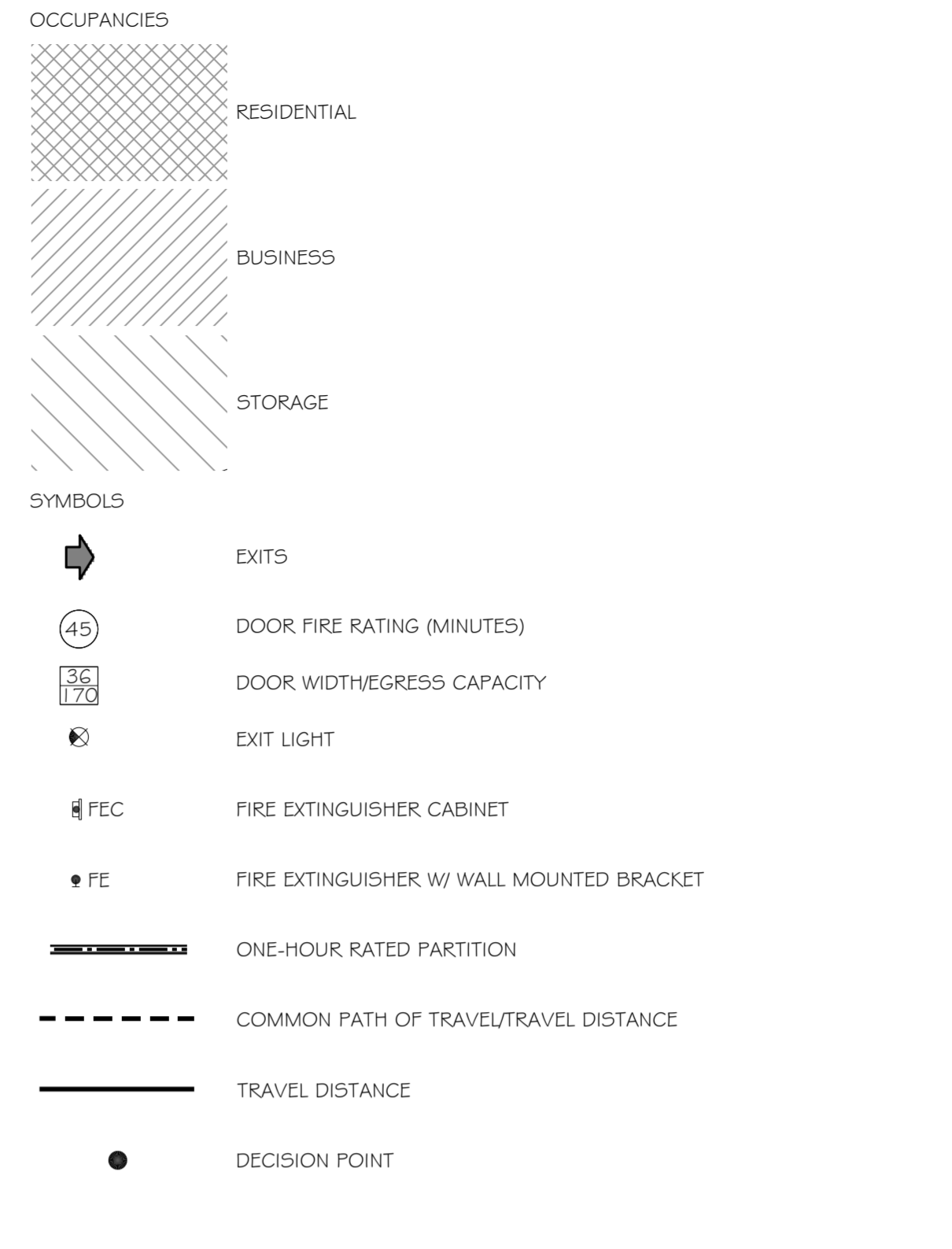
MAXIMUM EXIT ACCESS TRAVEL DISTANCE (TABLE 1016.1):
B - 300' R-2 - 250' S-2 - 250'

MINIMUM CORRIDOR WIDTH (SECTION 1018.1 & SECTION 1005.1):
44"

MAXIMUM DEAD END CORRIDOR (SECTION 1018.4):
50'

MAXIMUM COMMON PATH OF TRAVEL (1014.3):
B & S-2 - 100' R-2 - 125'

LEGEND



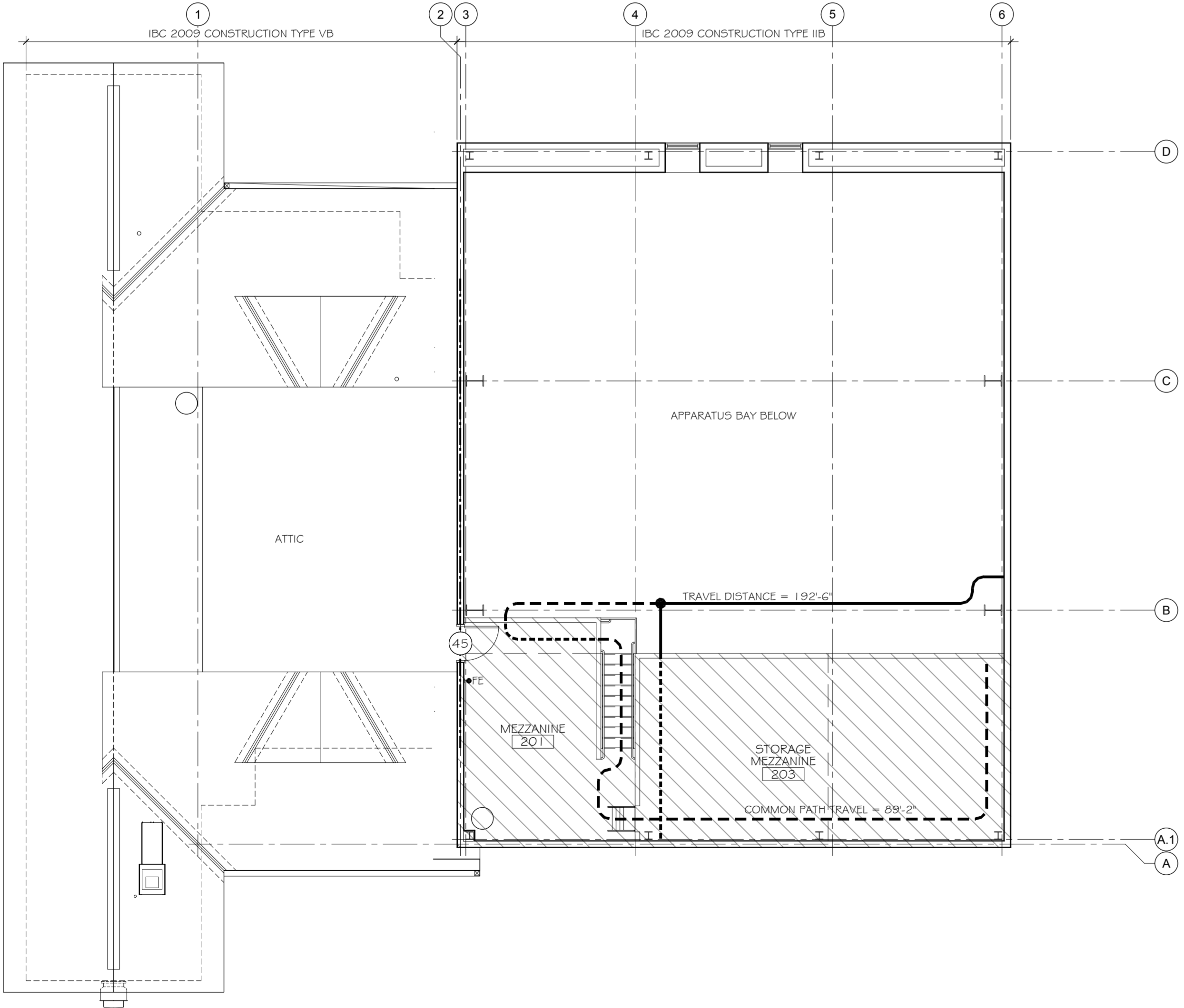
DAMMON ENGINEERING, INC.
Architects & Engineers

dammonengineering.com
dammon@bellouth.net
PHONE: 985-649-5432
FAX: 985-641-5950

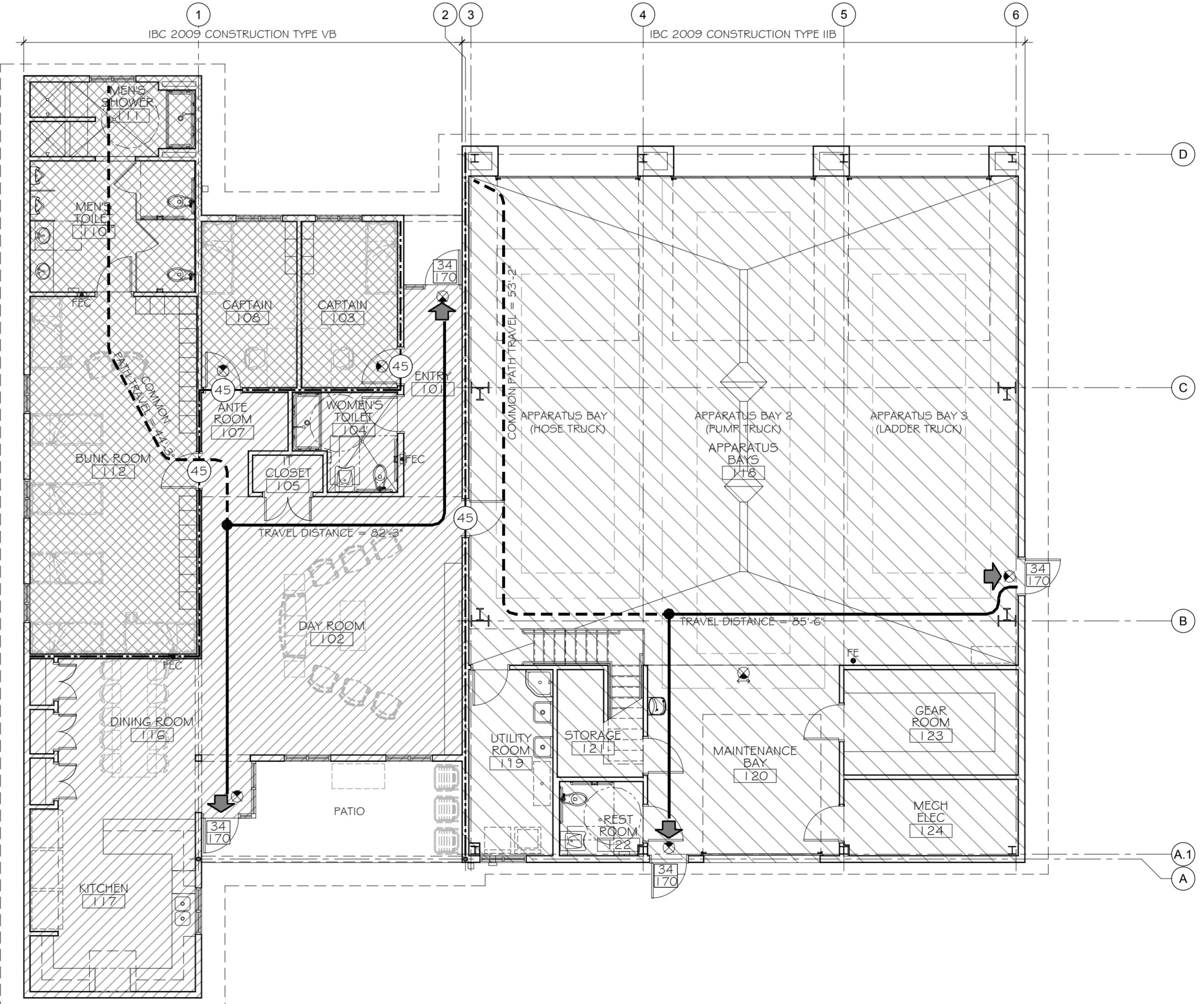
CHIEF ENGINEER: LAWRETT DAMMON, P.E.
CHIEF ARCHITECT: KEVIN KIRCHEN
554 OLD SPANISH TRAIL
SLIDELL, LA 70458

ST. TAMMANY FIRE PROTECTION DISTRICT No 1
FIRE STATION # 14
297 STEELE ROAD
SLIDELL, LA

JOB No: 2161 DATE: 2/6/2013 CHECKED BY: KJK
DRAWN BY: KJK



2 MEZZANINE LEVEL LIFE-SAFETY PLAN
SCALE: 1/8" = 1'-0"



1 FIRST FLOOR LIFE-SAFETY PLAN
SCALE: 1/8" = 1'-0"