



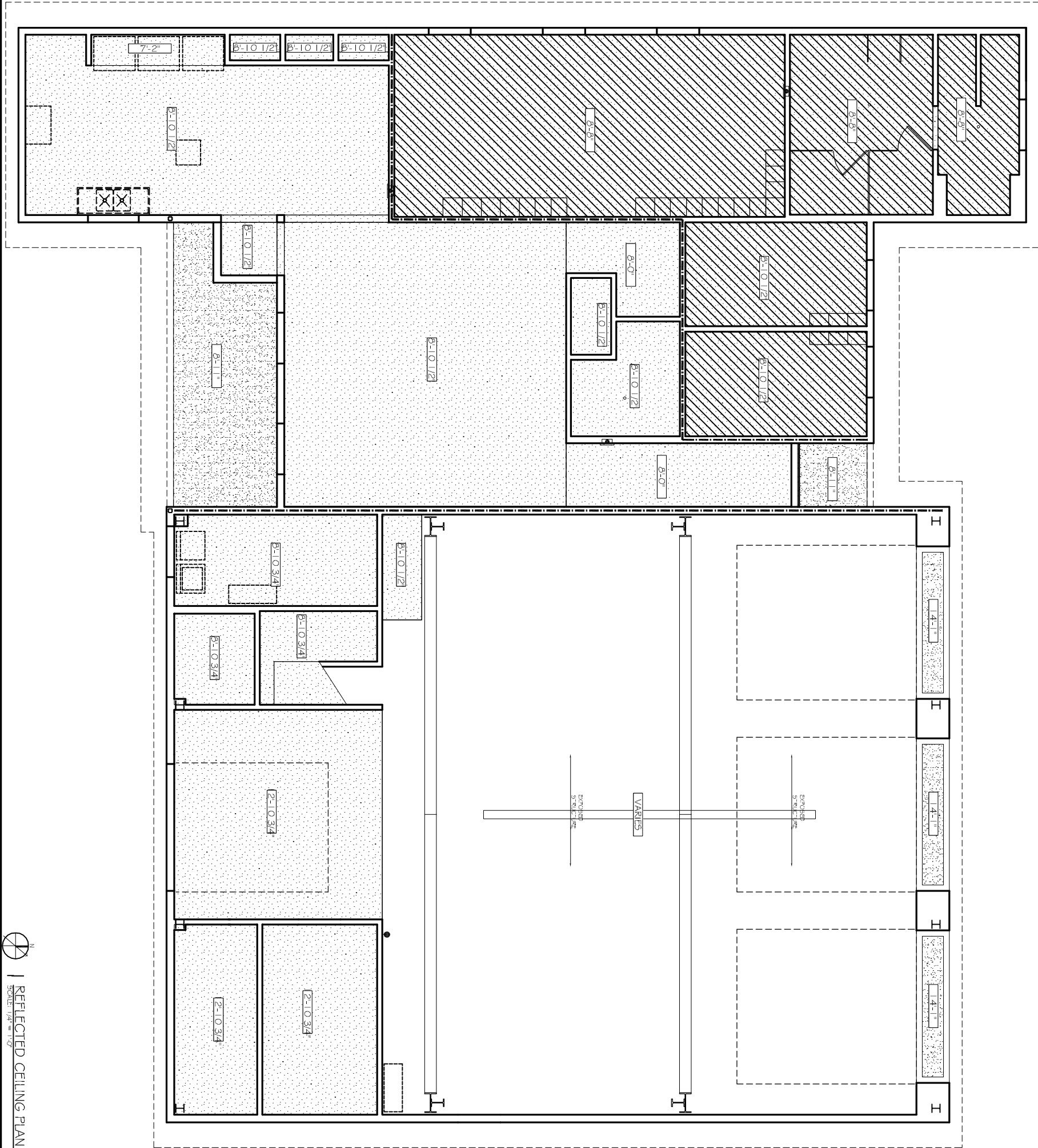


CEILING LEGEND	
	5/8" GYPSUM WALL BOARD
	ONE-FOUR RATED HORIZONTAL SHEAR WALL ASSEMBLY
	PRE-FINISHED CEMENTIOUS PANEL
	CEILING HEIGHT SYMBOL



REFLECTED CEILING PLAN
SCALE: 1/4" = 1'-0"

A-2
SHEET No: 01 OF 1


REFLECTED CEILING PLAN

REVISIONS		
#	DESCRIPTION	DATE

**DISTRICT 1
FIRE STATION 4**
297 STEELE ROAD
SUDELL, LA

JOB No: 2161 DATE: 2/8/2013

DRAWN BY: KJK CHECKED BY: KJK



DAMMON
ENGINEERING, INC.
Architects & Engineers

CHIEF ENGINEER: EMMETT DAMMON, P.E.
CHIEF ARCHITECT: KEVIN KINCHEN
554 OLD SPANISH TRAIL
SUDELL, LA 70458

dammonengneering.com
dammoneng@bellsouth.net
PHONE: 985-648-5933
FAX: 985-641-5950