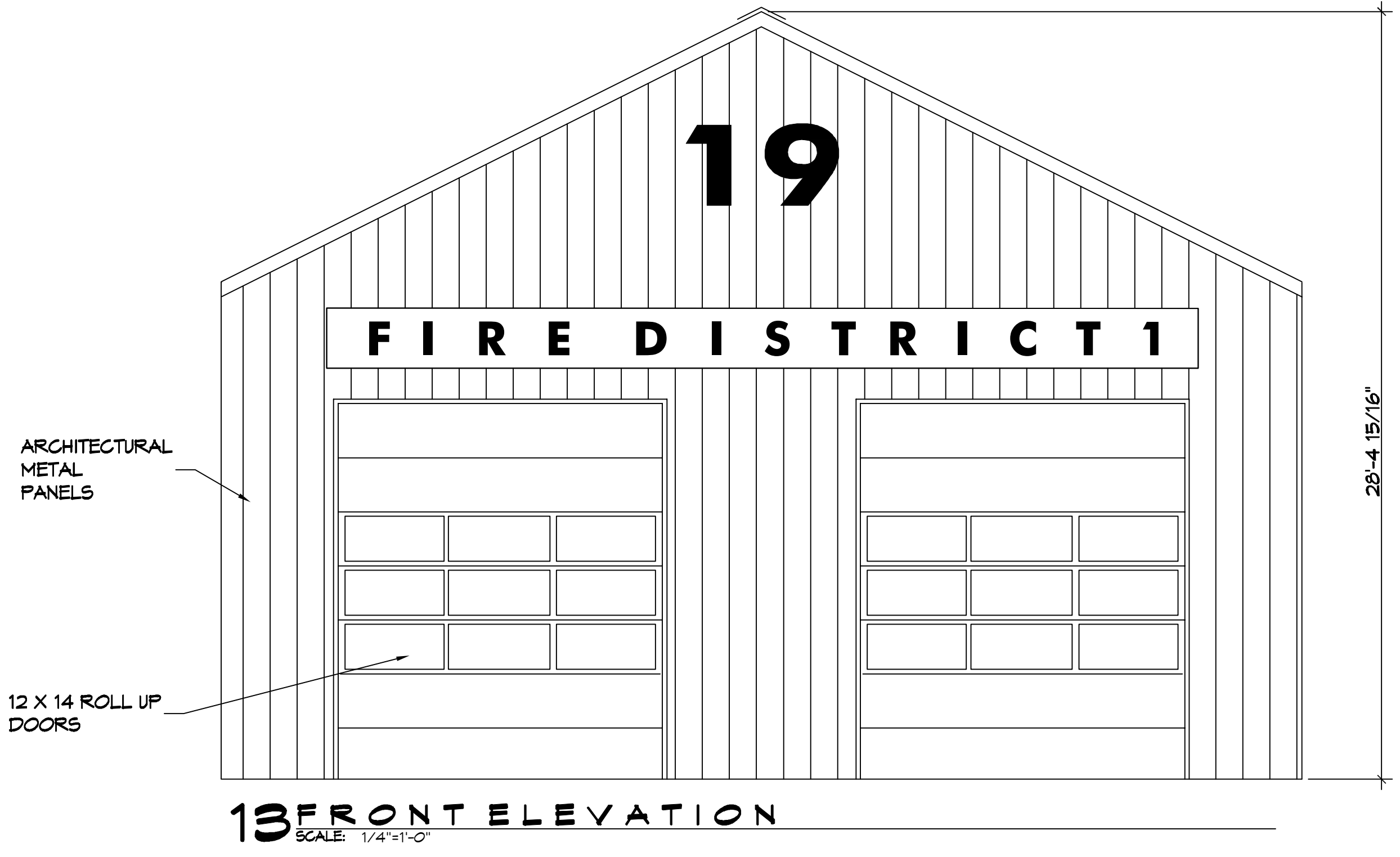
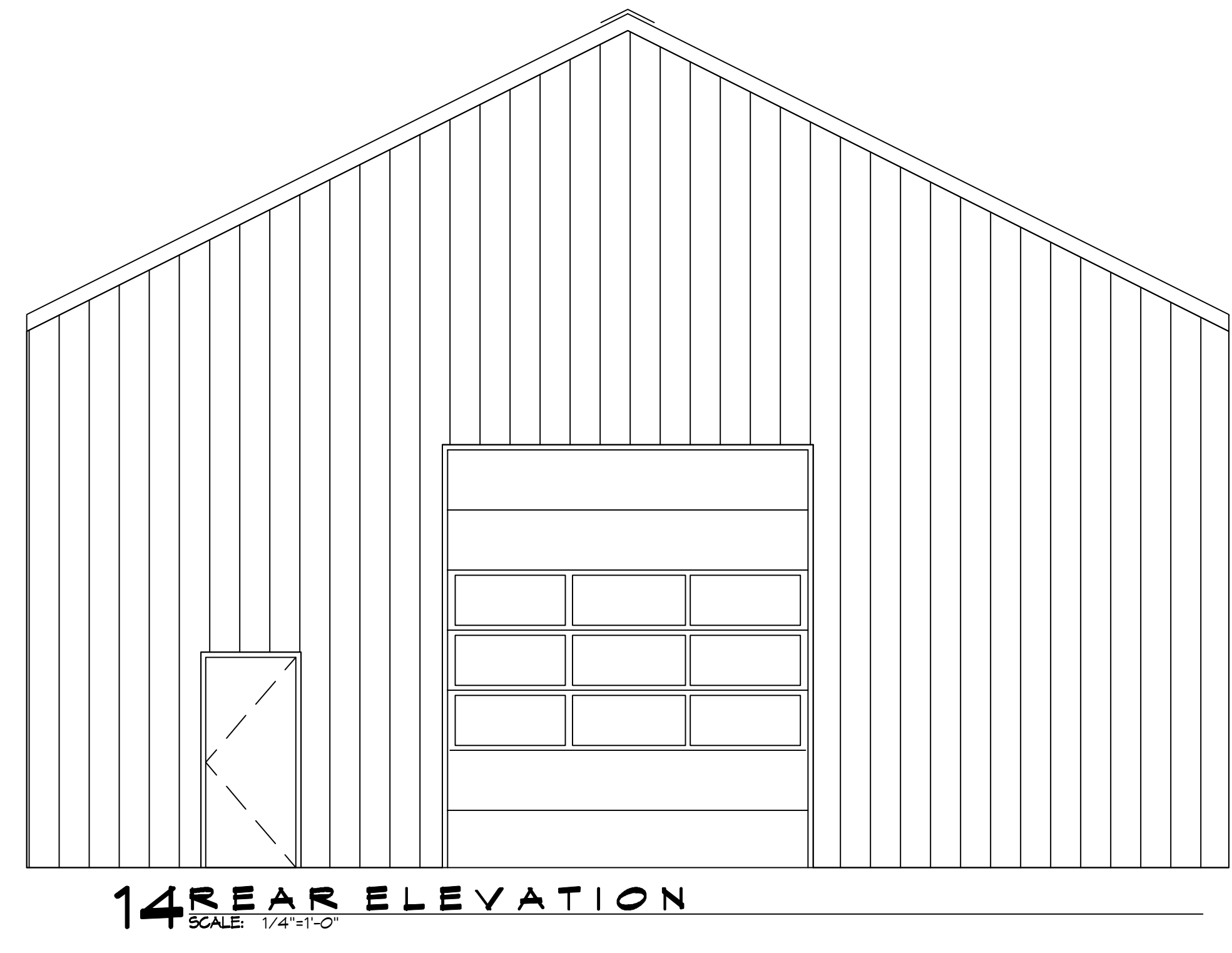


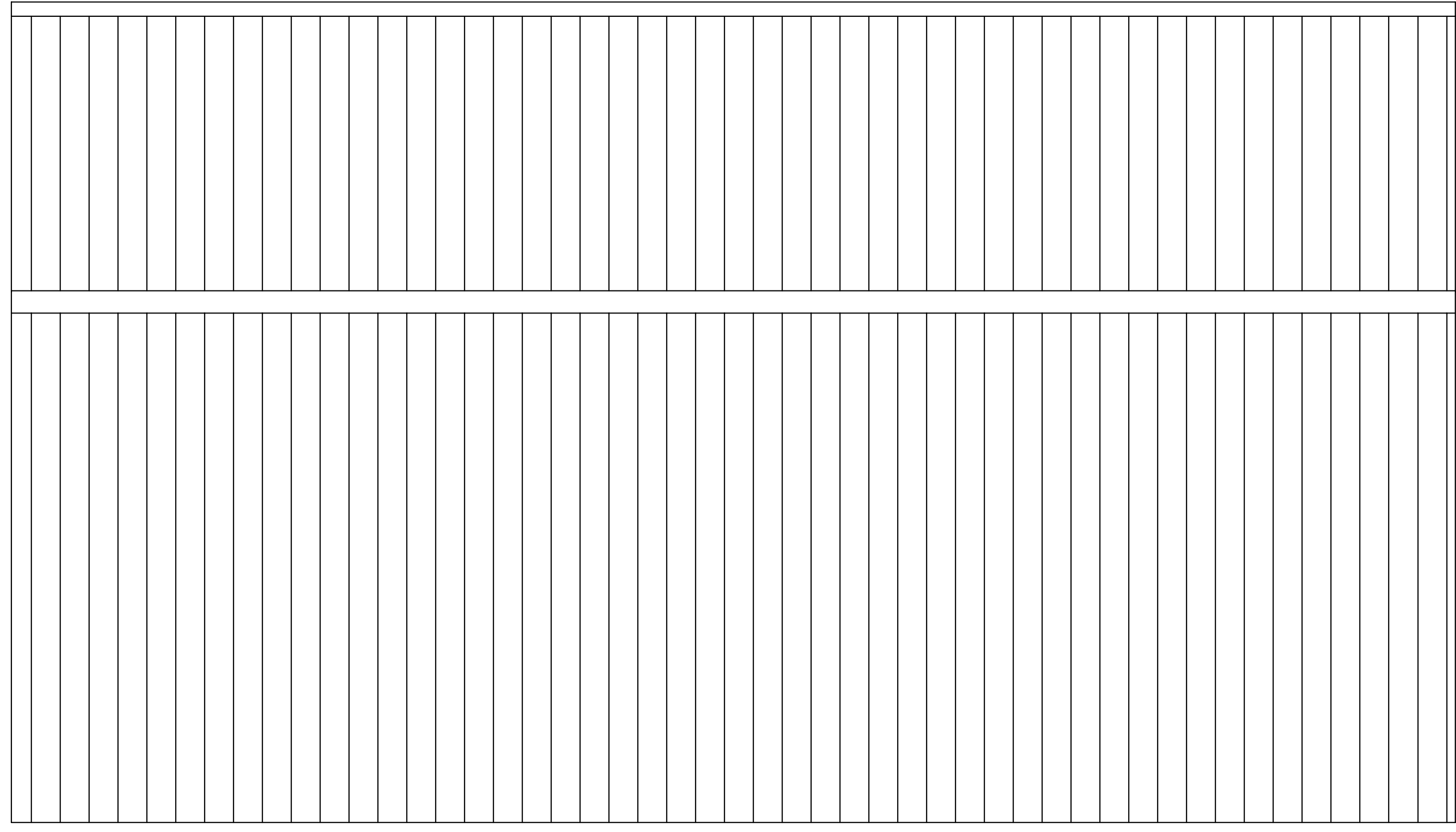
FILE NAME: J:\A - Government\3103 - Allen Road Fire Station 11\Drawings\General\Exterior\13 - Exterior Elevations.dwg - DATE: 02-10-2022 - TIME: 10:22:15 AM - PROJECT: 3103



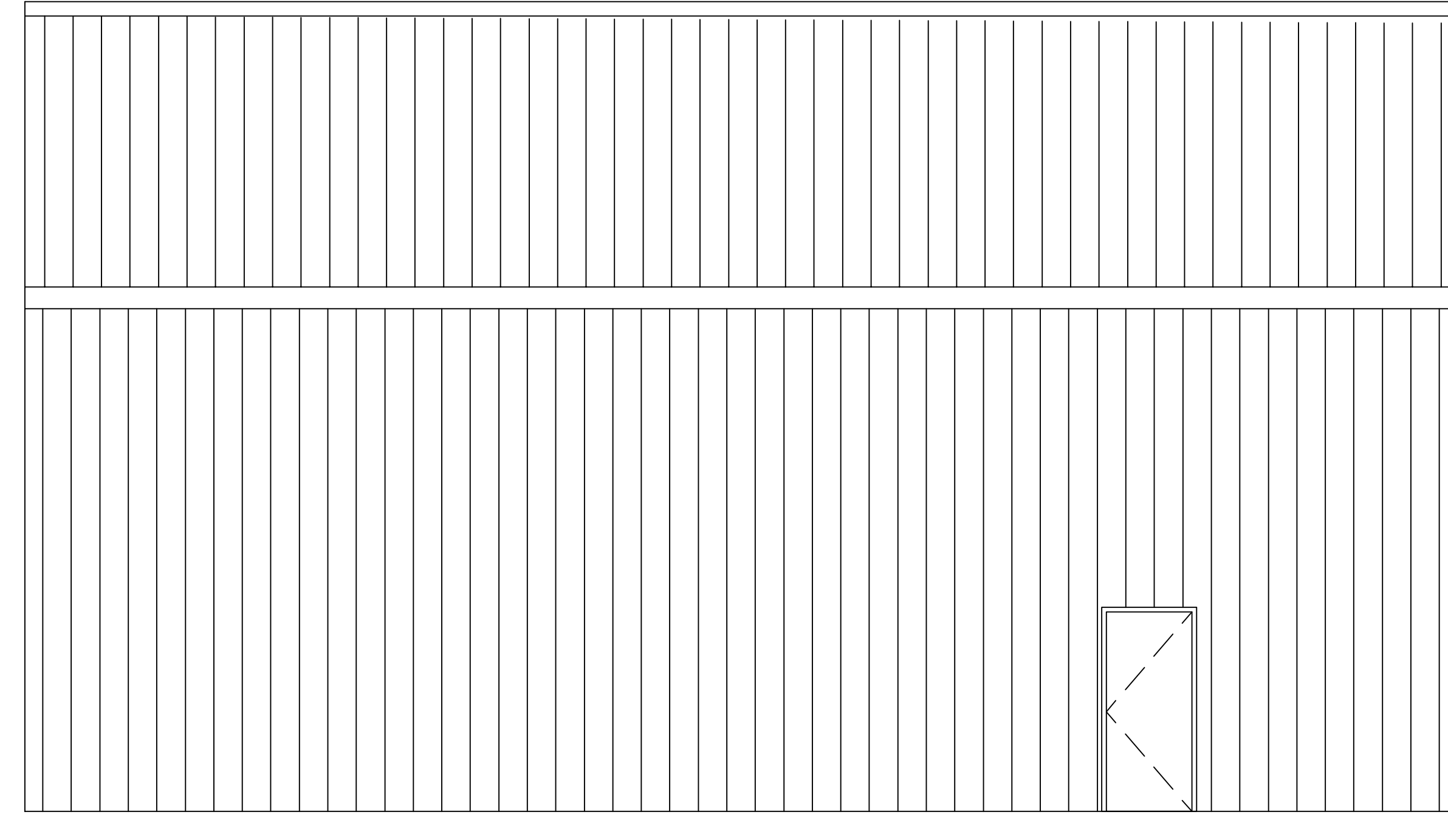
13 FRONT ELEVATION
SCALE: 1/4"=1'-0"



14 REAR ELEVATION
SCALE: 1/4"=1'-0"



11 RIGHT ELEVATION
SCALE: 1/4"=1'-0"



12 LEFT ELEVATION
SCALE: 1/4"=1'-0"

DAMMON
ENGINEERING, INC.
LOUISIANA & MISSISSIPPI

Chief Engineer: Brian Misch, PE
554 Old Spanish Trail
Stielit, LA 70458
www.dammonengineering.com
info@dammonengineering.com
PH: 985.649.5832

#	DESCRIPTION	REVISIONS	DATE

SEAL:

NEW FIRE STATION
ALLEN ROAD FIRE STATION #19

ALLEN ROAD
JOB No: DATE: 02-10-2022
DRAWN BY: CKD CHECKED BY: JAS

This drawing is the property of Dammon Engineering, Inc. and is not to be used, copied, or reproduced in any form without the written consent of Dammon Engineering, Inc. The user assumes all liability for any errors or omissions in this drawing. The user also assumes all liability for any damage or injury resulting from the use of this drawing.

SHEET TITLE:
EXTERIOR ELEVATIONS

DRAWING NUMBER:
A103

