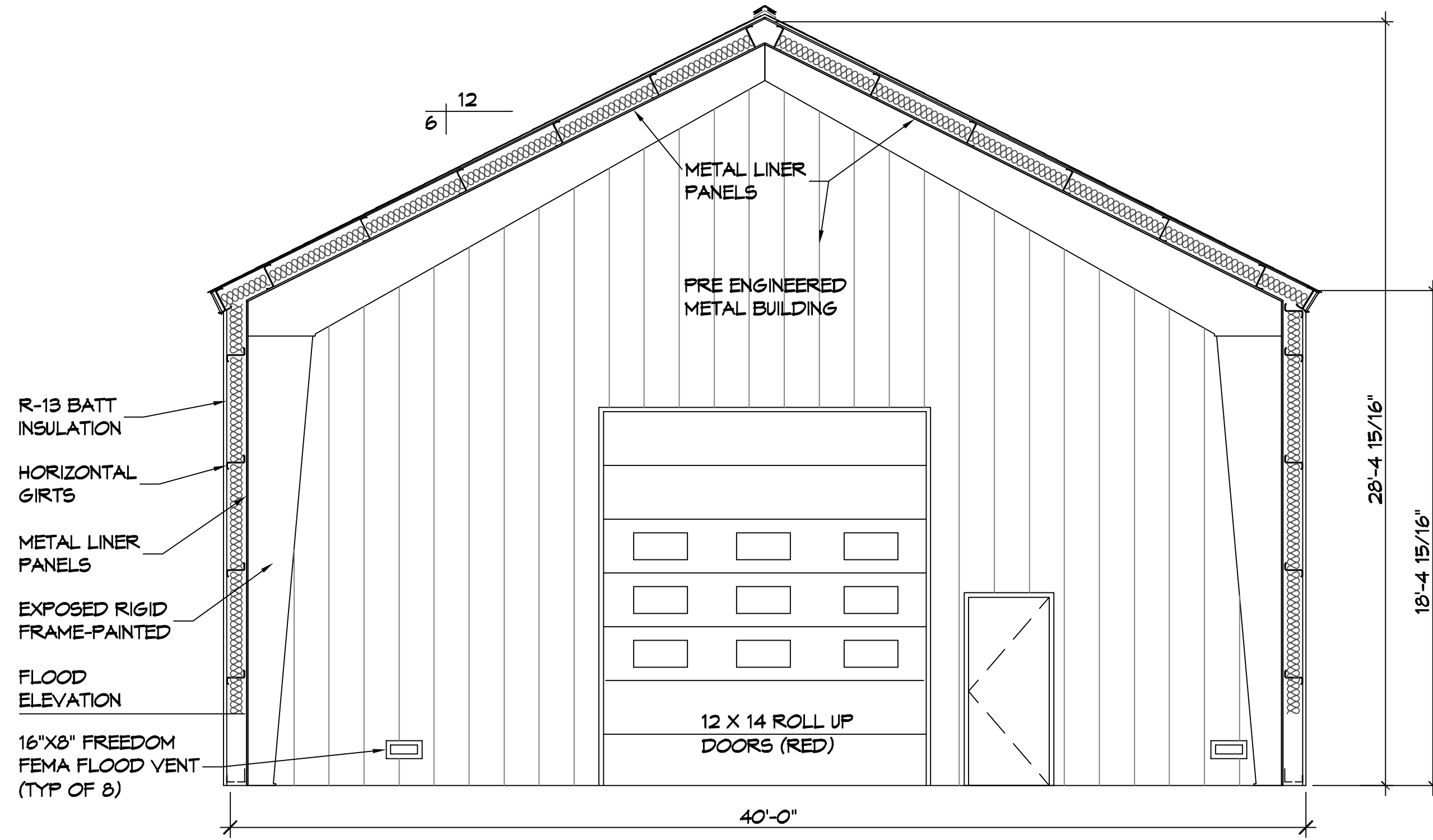


P:\2022\11 - Dammon\1104 - Allen Road Fire Station 19\Drawing\1104-Engine Bay Building.dwg
 PLOT DATE: 09/22/2022 10:54:24 AM



1 ENGINE BAY BLDG SECTION
 SCALE: 1/4" = 1'-0" ENGINE BAY

DAMMON
ENGINEERING, INC.
 LOUISIANA & MISSISSIPPI
 www.dammonengineering.com
 info@dammon.com
 Phone: 985.449.5832

#	DESCRIPTION	REVISIONS	DATE

SEAL:

ST. TAMMANY FIRE PROTECTION DISTRICT NO. 1
FIRE STATION 19
 ALLEN ROAD
 SLIDELL, LOUISIANA 70461
 JOB No: _____ DATE: 09-22-2022
 DRAWN BY: _____ CHECKED BY: CJD

 I hereby certify that I am a duly Licensed Professional Engineer in the State of Louisiana and that I am the author of the design and calculations shown on this drawing. I also certify that the design and calculations shown on this drawing were prepared by me or under my direct supervision and that I am a duly Licensed Professional Engineer in the State of Louisiana.

SHEET TITLE:
 ENGINE BAY SECTION
 DRAWING NUMBER:
S105
 SHEET No: 1 of X