

LIFE-SAFETY INFORMATION

APPLICABLE CODES	
NFPA 101 LIFE-SAFETY CODE 2015	
STORAGE S-2 (CHAPTER 42) & LODGING & ROOMING (CHAPTER 26); CONSTRUCTION TYPE V B	
MIXED OCCUPANCIES (REFERENCE CHAPTER 6)	
OCCUPANT LOAD FACTOR (REFERENCE TABLE 7.3.1.2)	
LODGING & ROOMING 2561 S.F.	13 OCCUPANTS
STORAGE S-2 2,000 S.F.	4 OCCUPANTS
TOTAL OCCUPANTS = 104 OCCUPANTS	
CLASSIFICATION OF HAZARD OF CONTENTS	
(REFERENCE: OCCUPANCY CHAPTER AND 6.2.2; SPECIFY LOW, ORDINARY, OR HIGH) LOW HAZARD	
CONSTRUCTION TYPE(S) (REFERENCE: CHAPTERS, TABLE A.9.2.1.2 AND COMMENTARY TABLE 8.1 IN HANDBOOK)	
3 (200)	
FIRE SEPARATION BETWEEN ASSEMBLY AND STORAGE : 2 HRS (TABLE 6.1.14.4.1(a))	
MINIMUM EXIT SEPARATION DISTANCE FOR REMOTELY LOCATED EXITS	
(REFERENCE: SECTION 7.5; SPECIFY 1/2 OR 1/3 DIAGONAL DISTANCE OF AREA SERVED)	
1/2 DIAGONAL ASSEMBLY- 64 FT / 2 = 32.0 FT	SECTION 42.2.4.1 LOW AND ORDINARY HAZARD STORAGE OCCUPANCIES & SECTION 38.2.4.2 FOR BUSINESS ALLOWING FOR SINGLE MEANS OF EGRESS
MAXIMUM DEAD-END CORRIDORS	(REFERENCE: OCCUPANCY CHAPTER AND TABLE A.7.6) 20 (ASSEM.) & 50 (STOR.)
MAXIMUM COMMON PATH OF TRAVEL DISTANCE	(REFERENCE: OCCUPANCY CHAPTER AND TABLE A.7.6) 75 (ASSEM.) & 50 (STOR.)
MAXIMUM TRAVEL DISTANCE TO EXITS	(REFERENCE: OCCUPANCY CHAPTER AND TABLE A.7.6) 200 (ASSEM.) & 200 (STOR.)
EXTINGUISHMENT REQUIREMENTS	
SPRINKLER (NOT REQUIRED)	
DETECTION, ALARM, AND COMMUNICATION SYSTEMS	
REQUIRED (12.9.4.4 - 42.9.4.4)	
ALLOWABLE HEIGHT AND BUILDING AREA	
PER IBC EQUIVALENT CONSTRUCTION TYPE	

BUILDING CODE

APPLICABLE CODES	
IBC 2015	
OCCUPANCY : STORAGE S-2 - RESIDENTIAL R-2 ; MIXED OCCUPANCIES (IBC 2015 CHAPTER 10)	
OCCUPANT CALCULATIONS (TABLE 1004.1.2)	
RESIDENTIAL GROUP R-2 2561 S.F.	200 GROSS 13 OCCUPANTS
STORAGE GROUP S-2 2,000 S.F.	500 GROSS 4 OCCUPANTS
TOTAL OCCUPANTS 17 OCCUPANTS	
CONSTRUCTION TYPE(S) CHAPTER 6	
V B (TABLE 601)	
FIRE SEPARATION BETWEEN ASSEMBLY AND STORAGE (S2) = 3 HOUR (IBC 2015 TABLE 508.4)	
ALLOWABLE HEIGHT AND BUILDING AREA LIMITED BY TYPE OF CONSTRUCTION	
MAXIMUM HEIGHT IN FEET (SECTION 503 & 504, TABLE 504.3)	NON-SPRINKLED 40
MAXIMUM NUMBER OF STORIES (SECTION 503 & 504, TABLE 504.4)	NON-SPRINKLED 2
MAXIMUM AREA IN SQUARE FEET (SECTION 503, 506 & 507, TABLE 506.2)	NON-SPRINKLED 7,000 S.F.

WIND SPEED DESIGN REQUIREMENTS

THIS BUILDING SHALL BE DESIGNED WITH IBC SEC 1604 AS A FULLY ENCLOSED BLDG USING THE FOLLOWING INFORMATION:

WIND DESIGN DATA:

DETERMINATION OF WIND LOADS SHALL BE IN ACCORDANCE WITH IBC SEC 1609.3 (1), (2), OR (3) DEPENDING ON THE RISK CATEGORY

WIND SPEED V_{ult} = 143 MPH (IBC FIG 1609.3(1))

NOMINAL DESIGN WIND SPEED V_{asd} = 111 MPH ($V_{ult} \times (0.8)^{1/2}$)

RISK CATEGORY:	CATEGORY II BLDG	SURFACE ROUGHNESS =	B
TOPOGRAPHIC FACTOR =	1	EXPOSURE =	C
INTERNAL PRESSURE COEFFICIENT (ASCE 7-10 TABLE 26.11-1):	± 0.18		

LIVE LOADS (IBC SEC 1607)

STORAGE WAREHOUSE, LIGHT DUTY (IBC TABLE 1607.1):	125 PSF
OFFICE LOBBIES & CORRIDORS 1ST FLOOR	100 PSF
OFFICES (IBC TABLE 1607.1):	50 PSF
ROOF LIVE LOADS (IBC TABLE 1607.1):	20 PSF UNIFORM, 300 LB CONCENTRATED

SNOW LOADS (IBC SEC 1608):

GROUND SNOW LOAD (IBC FIG 1609.2):	5 PSF
------------------------------------	-------

FLOOD ZONE INFORMATION

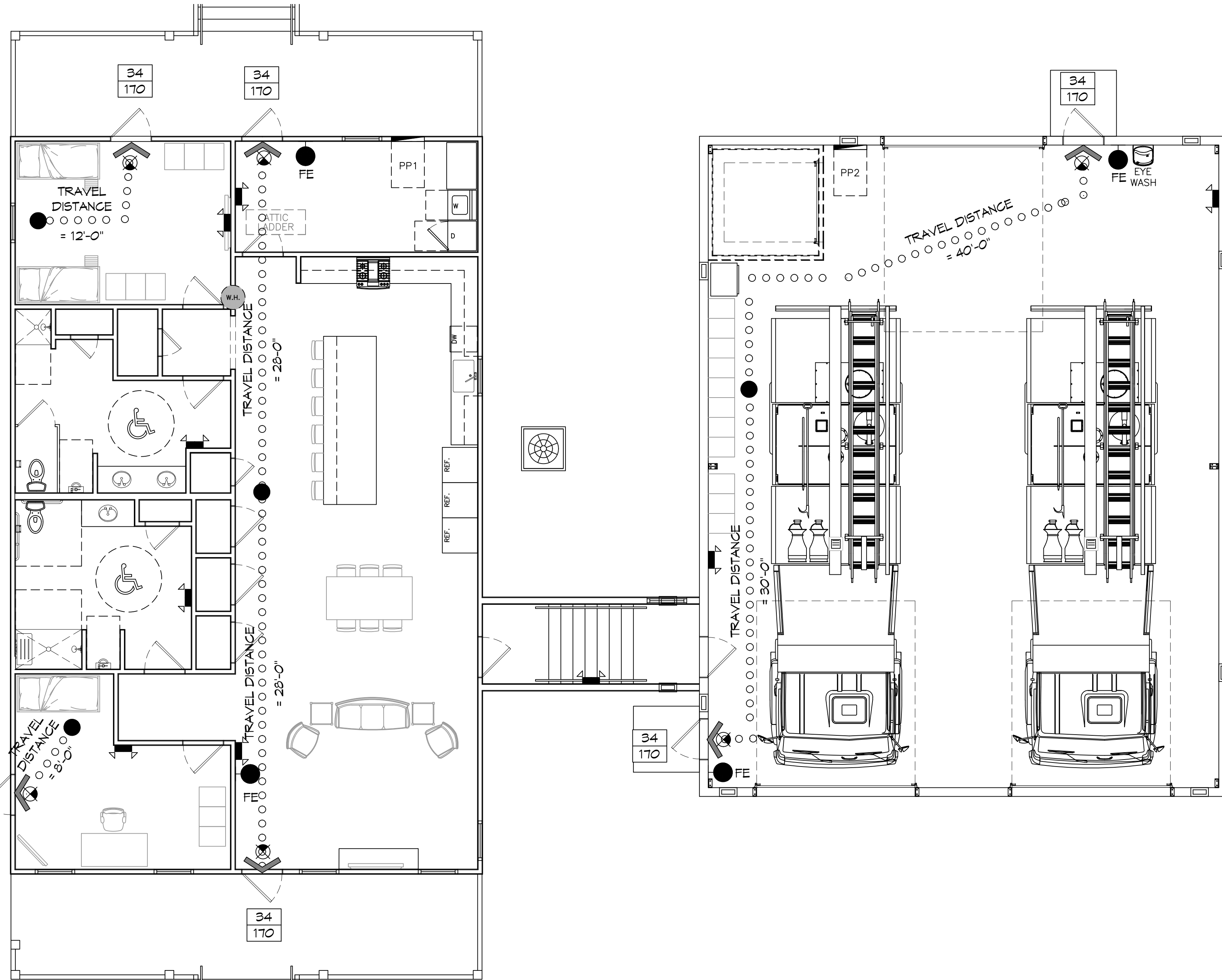
BASED ON THE SURVEY OF THIS PROPERTY BY J.V. BURKES AND ASSOCIATES. THIS PROPERTY IS IN FLOOD ZONE AE

FIRM, COMMUNITY NO. 225205 0440 D DATE: 04/21/1999

FLOOD ZONE:	AE	BASE FLOOD ELEVATION	13 FT
-------------	----	----------------------	-------

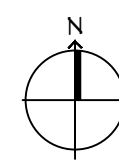
LIFE-SAFETY LEGEND

SYMBOL	DESCRIPTION
	EXITS
	DOOR FIRE RATINGS (MINUTES)
	DOOR WIDTH/EGRESS CAPACITY
	EXIT LIGHT
	FIRE EXTINGUISHER IV/ WALL MTD BRACKET
	COMMON PATH OF TRAVEL
	TRAVEL DISTANCE
	DECISION POINT

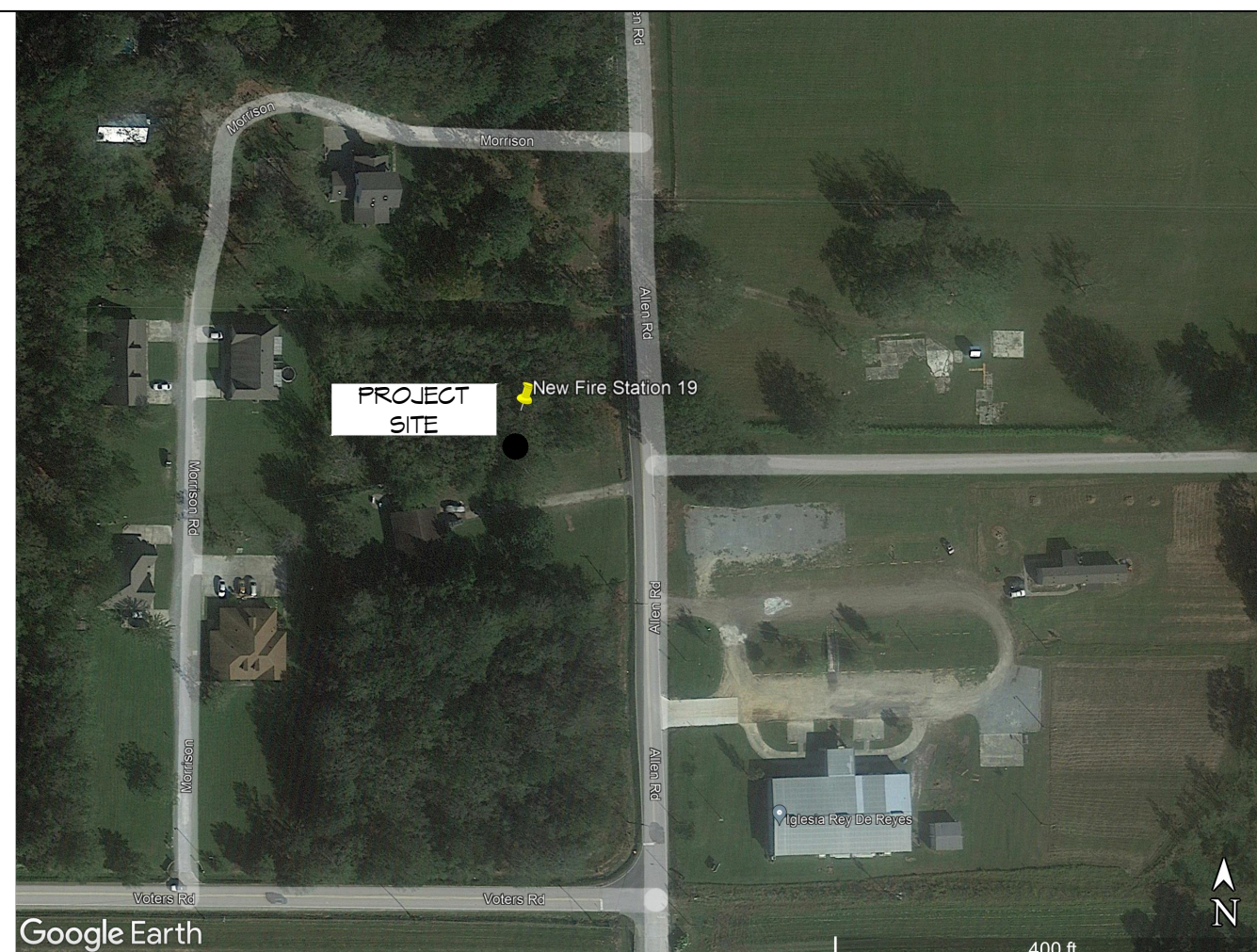


LIFE-SAFETY PLAN

SCALE: 3/16" = 1'-0"



VICINITY MAP



GENERAL NOTES

- ALL MATERIALS AND WORK INCIDENTAL TO THE CONSTRUCTION OF THIS PROJECT, SHALL CONFORM TO ALL GOVERNING CODES, AND REGULATIONS OF AGENCIES IN AUTHORITY.
- CONTRACTOR SHALL PROVIDE ALL PUBLIC PROTECTIONS NECESSARY AS REQUIRED BY LAW.
- THE DRAWINGS AND ANY SUBSEQUENTLY ISSUED ADDENDA, AMENDMENTS OR SUCH CHANGE ORDERS APPROVED BY THE OWNER AND THE CONTRACTOR ARE PART OF THESE CONTRACT DOCUMENTS.
- DO NOT SCALE DRAWINGS.** CONSULT WITH THE ENGINEER REGARDING ANY ITEMS IN THE CONTRACT DOCUMENTS THAT REQUIRE CLARIFICATION.
- TRASH SHALL BE REMOVED FROM THE SITE NOT LESS THAN TWICE MONTHLY.
- THE GENERAL CONTRACTOR SHALL VERIFY EXISTING CONDITIONS PRIOR TO COMMENCING WORK AND REPORT ANY AND ALL DISCREPANCIES TO THE ARCHITECT.
- CONTRACTOR VEHICLES AND EQUIPMENT NECESSARY FOR CONSTRUCTION MAY BE PARKED ON THE SITE. OTHER VEHICLES PARKED ON THE SITE REQUIRE THE OWNER'S PERMISSION.
- ALL MATERIALS/EQUIPMENT SHALL BE INSTALLED PER MANUFACTURER'S RECOMMENDATIONS. WORK NOT CONSISTENT WITH MANUFACTURER'S RECOMMENDATIONS WILL BE REJECTED BY OWNER/ARCHITECT.

SHEET INDEX

SHEET #	SHEET TITLE
G101	GENERAL INFORMATION SHEET
G102	ACCESSIBILITY INFORMATION
G101	SITE PLAN
G102	EROSION CONTROL PLAN
G103	SITE PAVING PLAN
S101	LIVING QUARTERS FOUNDATION PLAN
S102	LIVING QUARTERS FRAMING PLAN
S103	CEILING JOIST FRAMING PLAN
S104	LIVING QUARTERS ROOF FRAMING PLAN
S105	ENGINE ROOM FOUNDATION PLAN
S106	ENGINE BAY SECTION
S107	ADA RAMP
S108	ADA STAIR PLAN
S109	TYPICAL CONNECTION DETAILS, SCHEDULES & NOTES
A101	FLOOR PLAN
A102	LIVING QUARTERS EXTERIOR ELEVATIONS
A103	ENGINE BAY EXTERIOR ELEVATIONS
A104	COMBINED STATION EXTERIOR ELEVATIONS
A105	FINISH FLOOR PLAN
A106	REFLECTED CEILING PLAN
A107	INTERIOR ELEVATIONS PLAN
A108	INTERIOR ELEVATIONS DETAILS
P101	PLUMBING PLAN
P102	PLUMBING DETAILS AND NOTES
M101	MECHANICAL PLAN
M102	MECHANICAL DETAILS & SCHEDULES
E101	POWER PLAN
E102	LIGHTING PLAN
E103	SPECIAL SYSTEMS
E104	PANEL SCHEDULE AND ONE LINE DIAGRAM

DAMMON

ENGINEERING, INC.

LOUISIANA & MISSISSIPPI

www.dammonengineering.com
info@dammonengineering.com
554 Old Spanish Trail
Slidell, LA 70688
PH: 985.649.5832

#	DESCRIPTION	DATE

SEAL:

ST. TAMMANY FIRE PROTECTION DISTRICT NO. 1

FIRE STATION 19

57041 ALLEN ROAD
SLIDELL, LOUISIANA 70461

JOB NO: 05-15-2022
DATE: 2486
DRAWN BY: CKD
CHECKED BY: JMS

SHEET TITLE:
GENERAL INFORMATION SHEET

DRAWING NUMBER:

G101

SHEET No: 1 of 32