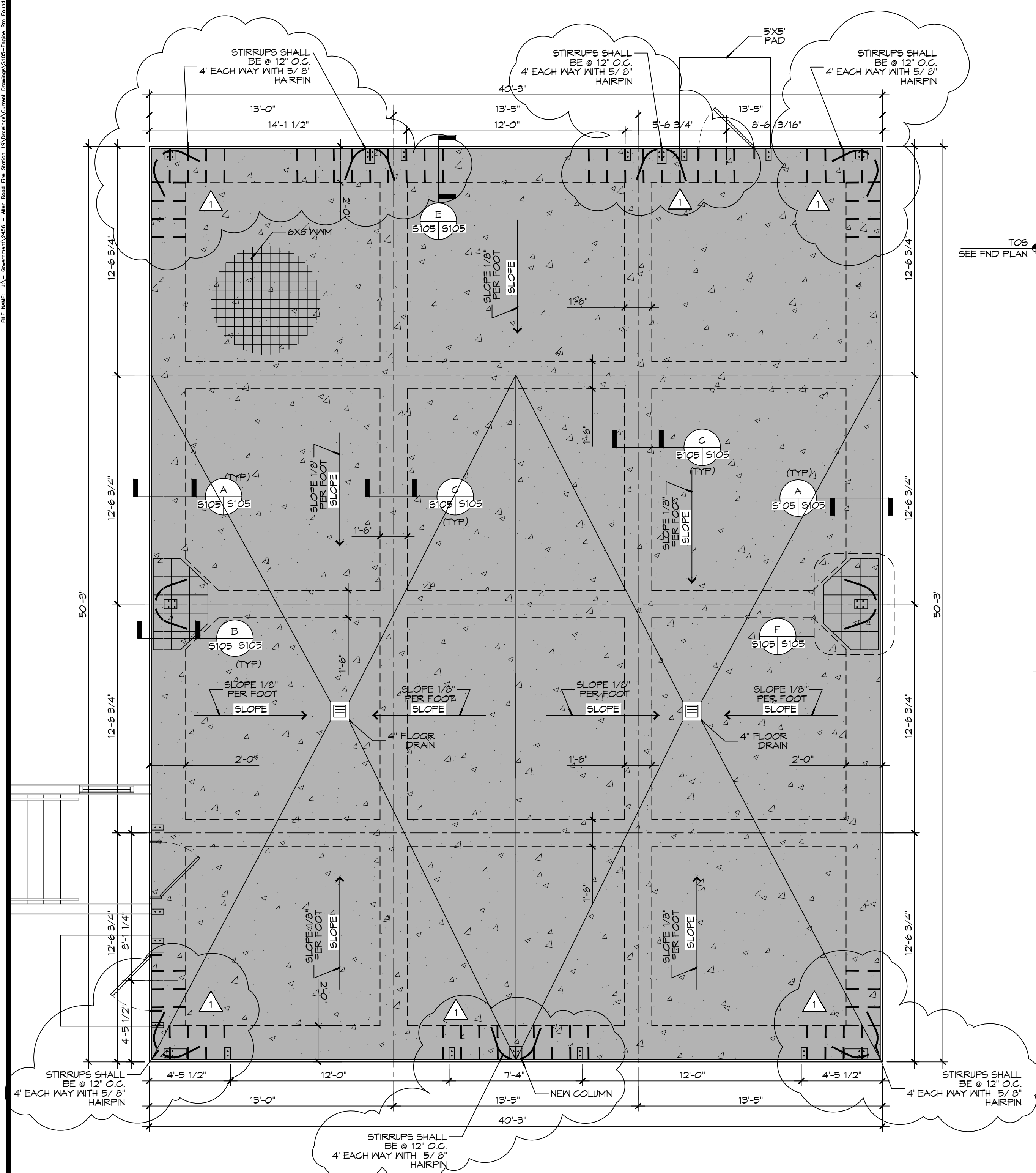


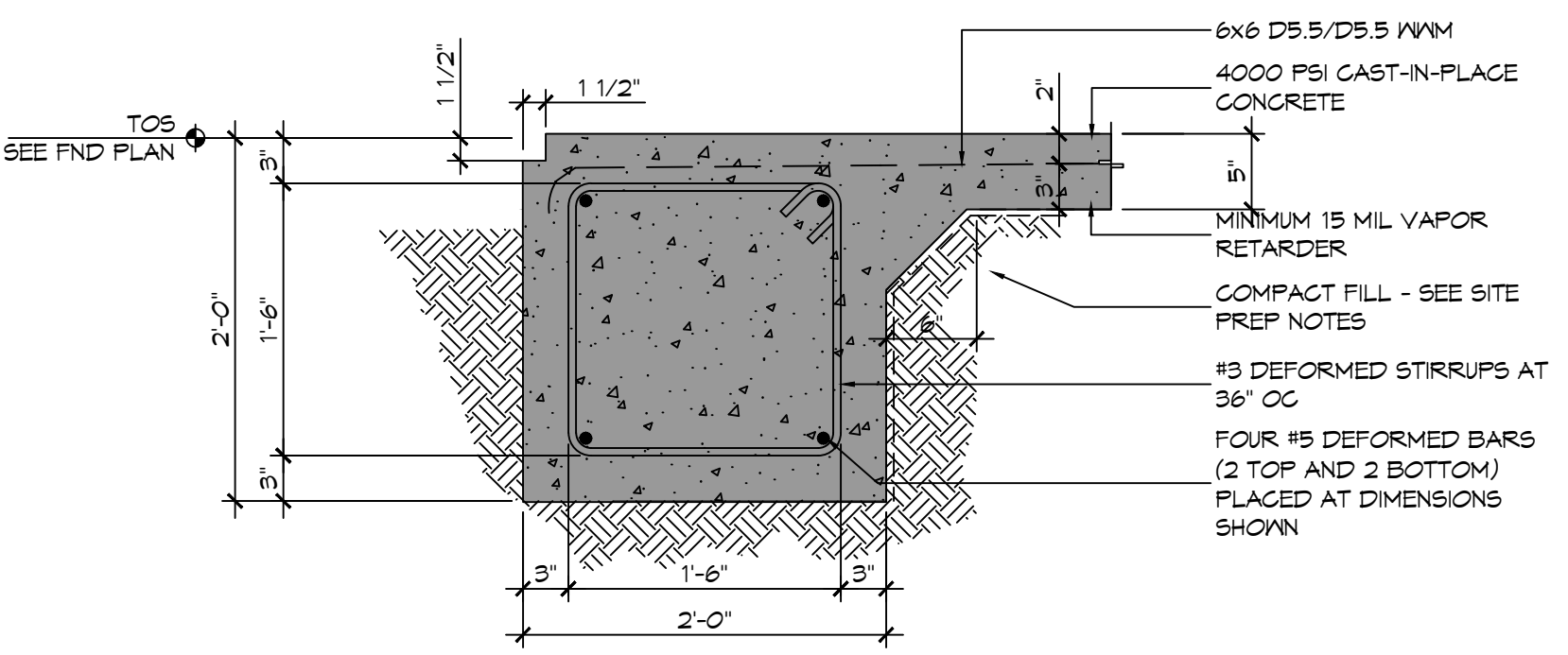
20 ENGINE BAY FOUNDATION PLAN
 SCALE: 1/4" = 1'-0"
 ENGINE BAY



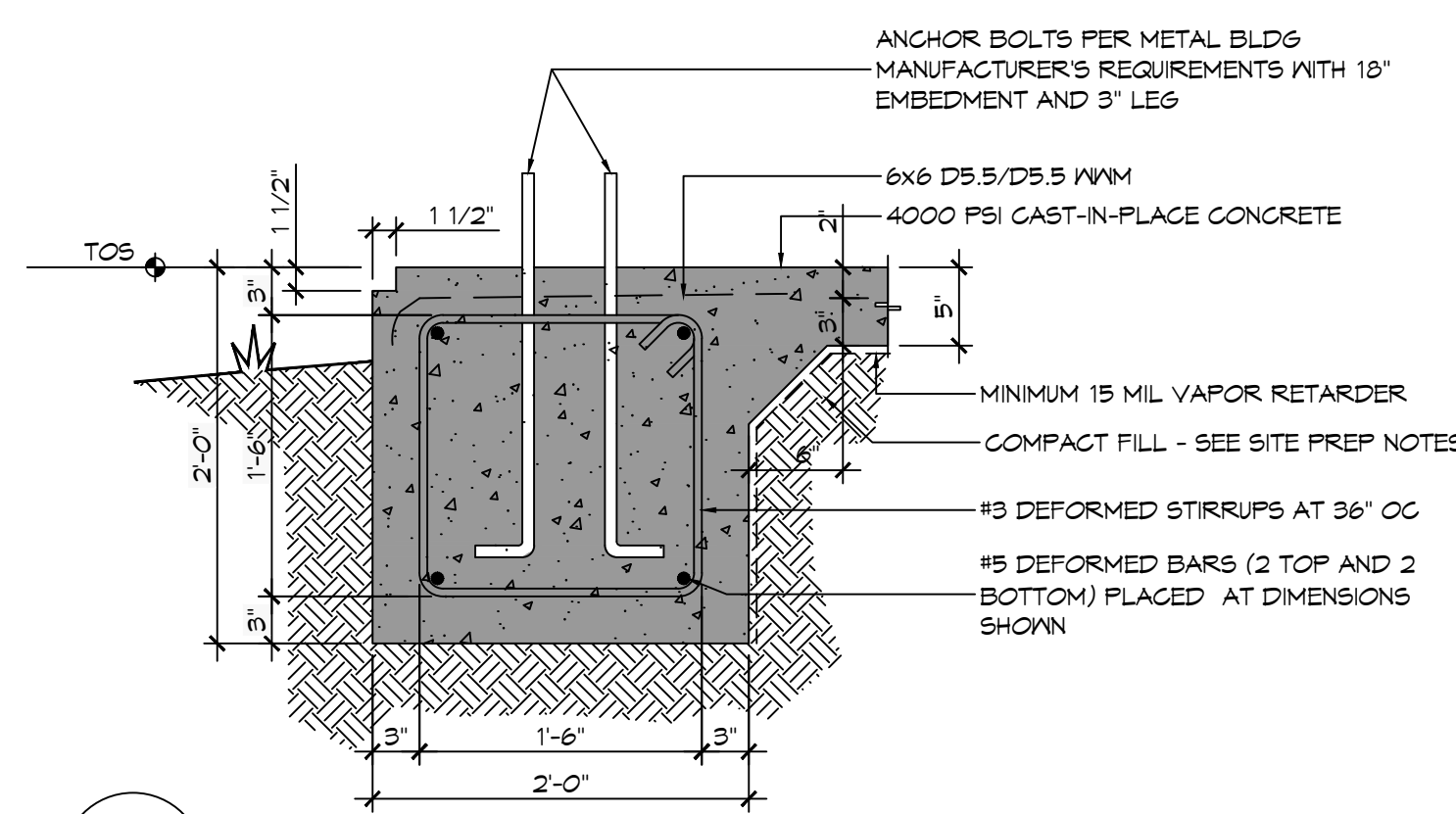
20 ENGINE BAY FOUNDATION PLAN
SCALE: 1/4" = 1'-0" ENGINE BAY

GENERAL FOUNDATION NOTES

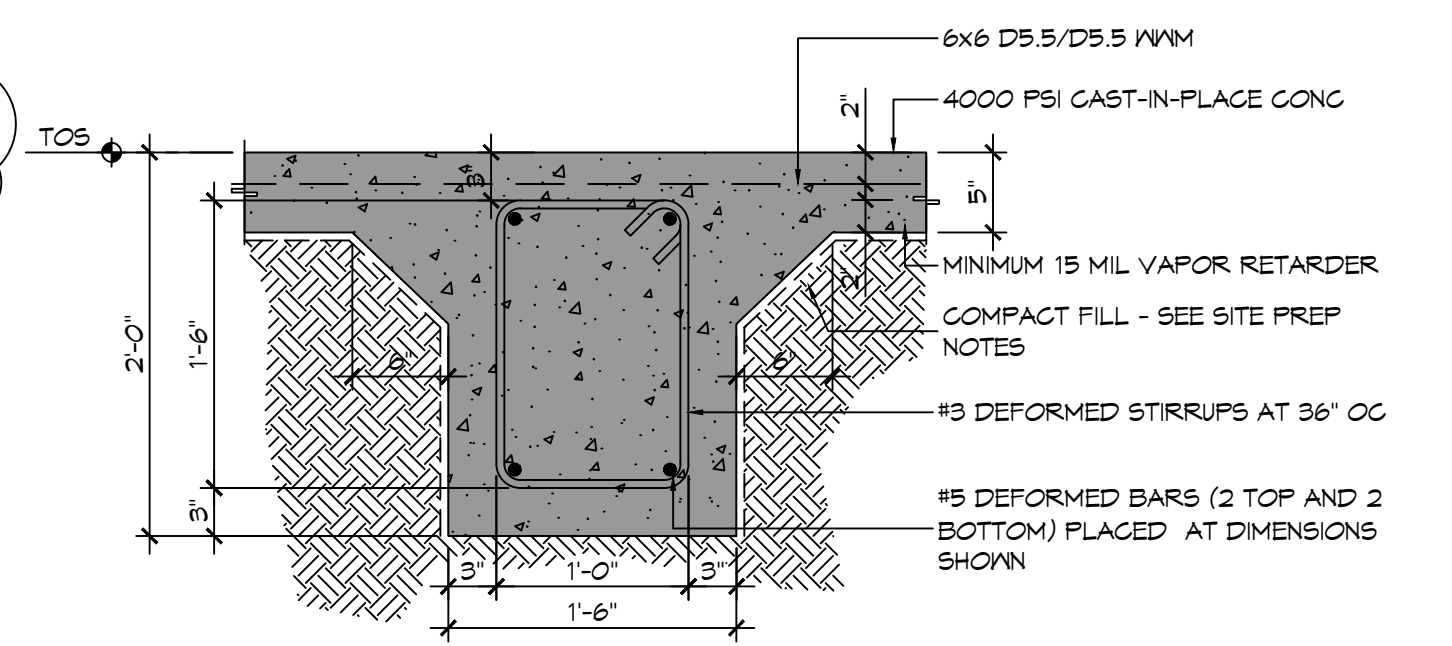
1. ALL DIMENSIONS ARE EDGE OF CONCRETE (EOC) UNLESS NOTED OTHERWISE.
2. VERIFY ALL PLUMBING ROUGH-IN LOCATIONS AND DOUBLE UP ON FLOOR JOIST IN THOSE AREAS.
3. CONCRETE MIX SHALL HAVE A MINIMUM COMPRESSIVE STRENGTH OF 4000 PSI AT 28 DAYS. CONCRETE MIX SHALL BE IN ACCORDANCE WITH ACI-318.
4. ALL CONVENTIONAL REINFORCING STEEL SHALL MEET ASTM-A615 (GRADE 60).
5. ONE LAYER OF POLYETHYLENE VAPOR BARRIER SHALL BE PLACED UNDER ALL CONCRETE. VAPOR RETARDER TO BE MINIMUM 10 MIL THICKNESS; ASTM E 1745 CLASS A, PERMEANCE LESS THAN 0.01 PERMS, EQUAL TO STEGO INDUSTRIES STEGO WRAP, ECOSHIELD-E 15 MIL BY EPRO, OR IRONBAR 15 BY FLATIRON FILMS. PROVIDE APPROPRIATE ACCESSORIES FOR A COMPLETE SYSTEM.
6. ALL REINFORCING STEEL AND MESH SHALL BE SECURELY SUPPORTED TO PREVENT BOTH VERTICAL AND HORIZONTAL MOVEMENT DURING CONCRETE PLACEMENT.
7. THE CONTRACTOR SHALL VERIFY ALL DROPS, OFFSETS, BRICK LEDGES, DIMENSIONS AND CONFIGURATIONS.
8. GRADE BEAM DIMENSIONS MAY VARY BY -5%, +20%.
9. FILL AND MUCK OUT 24" MINIMUM. SEE THE GEOTECHNICAL ENGINEERING REPORT BY STRATUM ENGINEERING DATED APRIL 21, 2022.
10. ALL SOIL BELOW SLAB SHALL RECEIVE TERMITE TREATMENT.



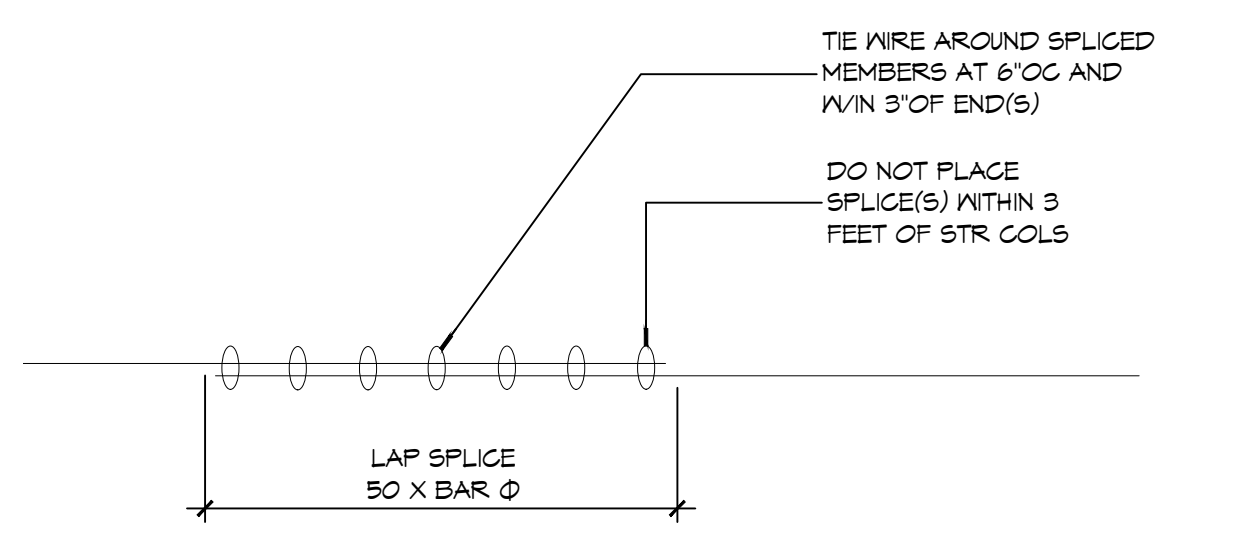
A SECTION
SCALE: 1" = 1'-0"



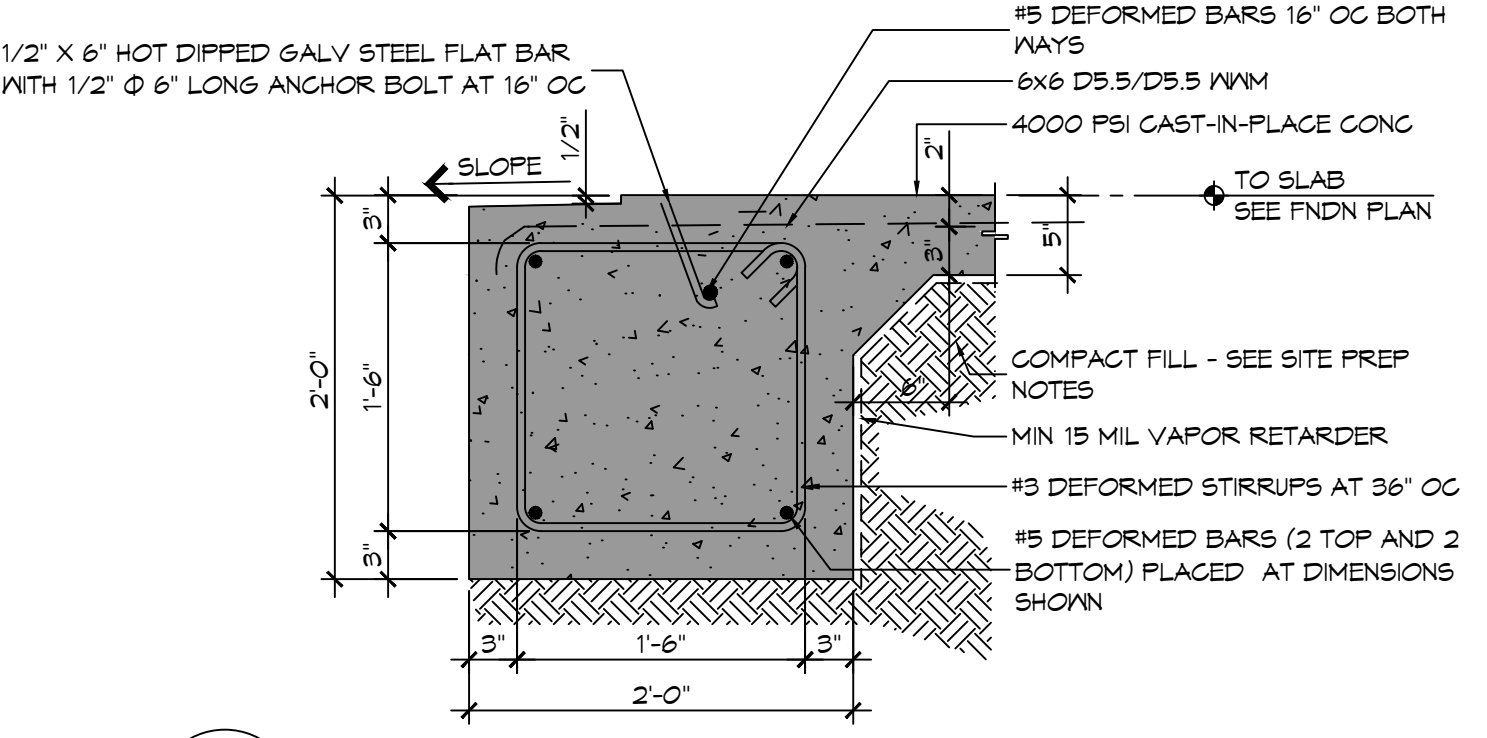
B SECTION
SCALE: 1" = 1'-0"



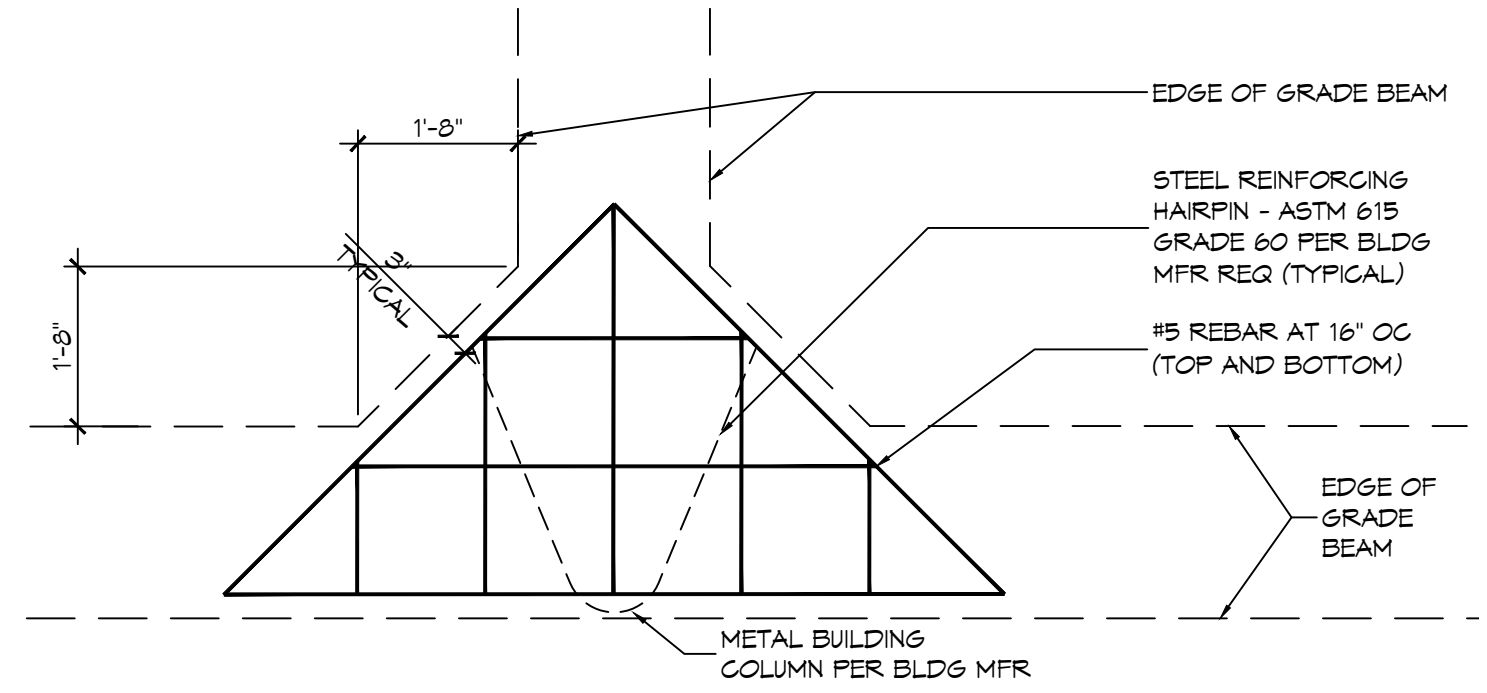
C SECTION
SCALE: 1" = 1'-0"



D SECTION
SCALE: 1" = 1'-0"



E SECTION
SCALE: 1" = 1'-0"



F DETAIL
SCALE: 1" = 1'-0"

DAMMON ENGINEERING, INC.
LOUISIANA & MISSISSIPPI
www.dammonengineering.com
info@dammon.com
PH: 985.649.5832

NO.	DESCRIPTION	DATE
1	STIRRUPS @ 12" O.C. AND HAIR P.N.	09-09-23



ST. TAMMANY FIRE PROTECTION DISTRICT NO. 1
FIRE STATION 19
87047 ALLEN ROAD
SULZELL, LOUISIANA 70461
JOB No: 2456 DATE: 09-16-2022
DRAWN BY: BAY CHECKED BY: CKD

SHEET TITLE:
ENGINE BAY FOUNDATION PLAN
DRAWING NUMBER:
S105
SHEET No: 10 of 30