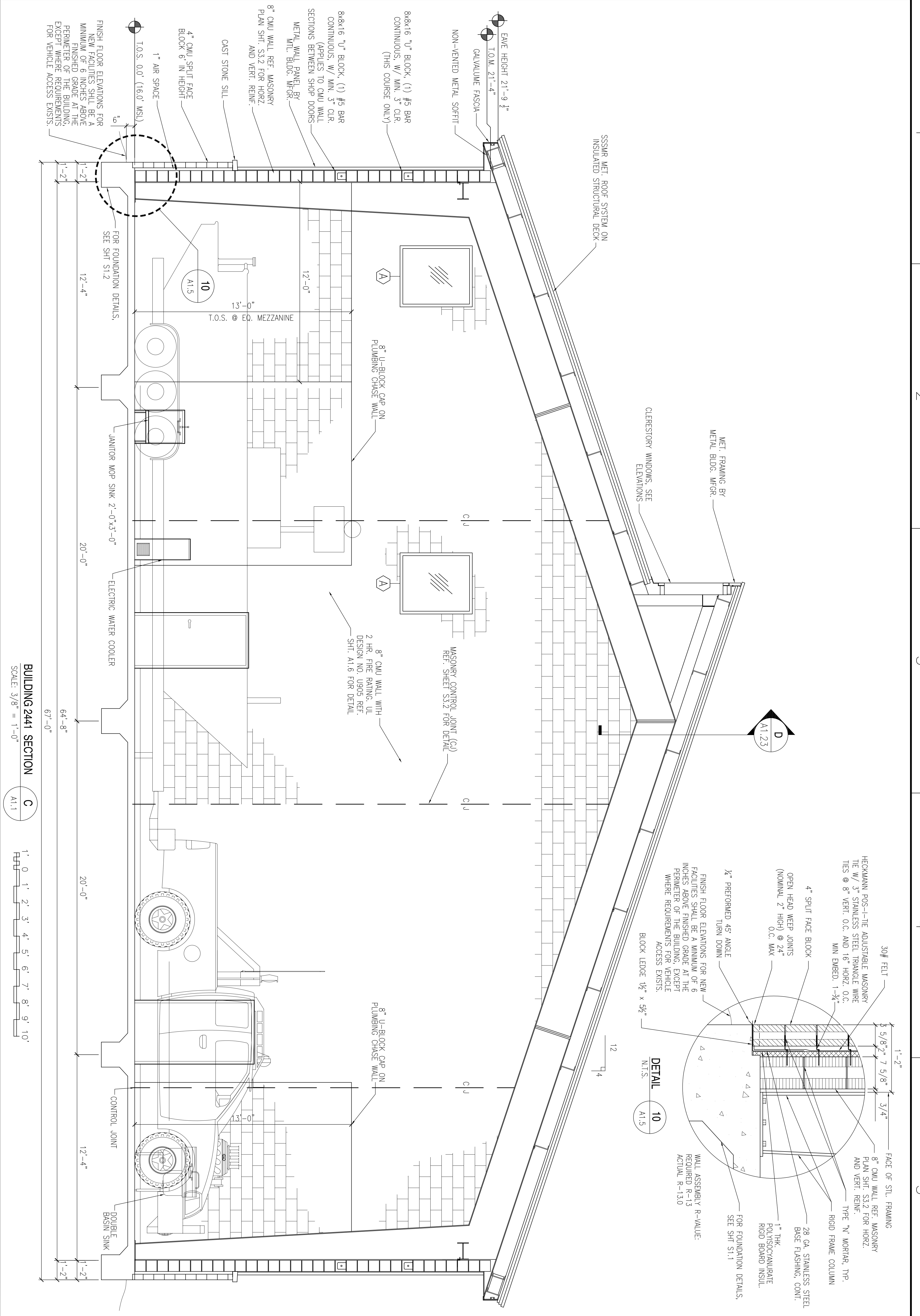
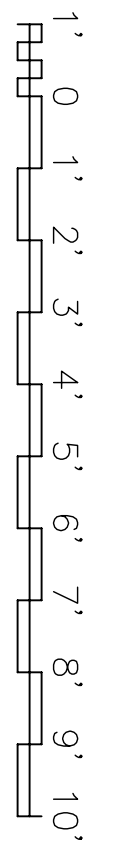


REVDATE:



BUILDING 2441 SECTION
SCALE: 3/8" = 1'-0"

A1.1



DEPARTMENT OF THE NAVY NAVAL FACILITIES ENGINEERING COMMAND SOUTHEAST NAVAL AIR STATION JACKSONVILLE MISSISSIPPI SOF RIVERINE AND COMBATANT CRAFT OPERATIONS FACILITY - PRE-FINAL MAINTENANCE BLDG. 2441 SECTION		DAMMON ENGINEERING, INC. ENGINEER 1000 W. GULF BLVD. SUITE 100 SLIDELL, LA 70458 (985) 649-8832 WWW.DAMMON.COM			
DESIGNED BY: R. WITBE REVIEWED BY: R. WITBE DRAWN BY: T. JARPER CHECKED BY: P. DAMMON DATE: 10/20/2023			SHEET NO. 35 OF 113 A15		DATE APPR
CODE ID NO. N4412 SIZE D SCALE AS SHOWN SHEET NO. P-210 WORK ORDER NO. 510247 CONTR. CONTROL NO. N62467-05-0-0096 DRAWING NUMBER			SYM DESCRIPTION DATE		