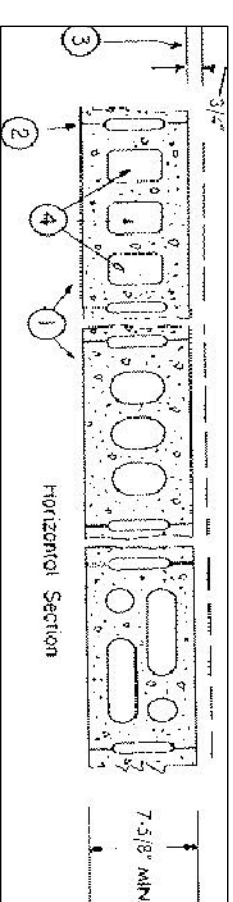


1. Normal-Weight Concrete --- Carbonate or siliceous aggregate, 145 + or - 3 pcf unit weight, 3000 psi compressive strength.
2. Welded Wire Fabric --- 6X6, 10/10 SWG.
3. Metal Lath --- 3/8 in. rib, 3.4 lb/sq yd expanded metal lath, wire-tied to each joist at every other rib, and midway between joists at side lap with 18 SWG galv steel wire. As an alternate, the form material for the concrete may be corrugated steel deck 9/16 in. deep of 28 MSG (minimum) galv steel welded to supports 15 in. O.C. with washers. The concrete thickness shall be measured to the top plane of the steel deck.
4. Steel Joists --- Type 12 $\frac{1}{4}$  minimum size, spaced 24 in. O.C. and welded to end supports.
5. Bridging --- 1-1/4 by 1-1/4 by 3/16-in. angles; welded to top and bottom chords of each joist.
6. Furring Channel --- No. 25 MSG galv steel, 2-5/8 in. wide by 7/8 in. deep, spaced 12 in. O.C., secured to joists with a double strand of 18 SWG galv steel wire, spaced 48 in. O.C. Channels overlapped at splice 5-1/2 in. and secured with two double strand ties. Minimum end clearance of channels to walls 3/8 in. As an alternate, furring channels may be secured to 1-1/2 in. cold-rolled channels at every intersection with double strand of 18 SWG galv wire. Cold-rolled channels spaced 48 in. O.C. and suspended perpendicular from lower chords of joists with 8 SWG galv wire spaced 48 in. O.C. along channels.
- 6A. Steel Framing Members\* --- (optional, not shown) --- alternate method to attach furring channels (Item 6) to joists (Item 4). Clips spaced 48 in. O.C., and secured to alternating joists with cup washer installation kit provided by manufacturer. On underside of bottom chord, 1-1/2 in. dia x 3/8 in. deep #16 galv steel cup washer is placed to surround the rubber insert. Clip attached to the bottom chord with a 1/4 in. dia, zinc plated bolt inserted through the center grommet and between the chord members; depth of bolt determined as 1-1/2 in. plus the depth of the bottom chord of the joist. Fastened on the top side of the bottom chord with a second cup washer placed open side up, and a 1/4 in. zinc plated "Nyloc" nut. Furring channels are friction fitted into clips. Ends of adjoining channels are overlapped 6 in. and tied together with double strand of No. 18 SWG galv steel wire near each end of overlap. As an alternate, ends of adjoining channels may be overlapped 6 in. and secured together with two self-tapping #6 framing screws, min. 7/16 in. long at the midpoint of the overlap, with one screw on each flange of the channel. Additional clips required to hold furring channel that supports the wallboard but joints, as described in Item 7.
7. Gypsum Board\* --- 5/8 in. thick. Sheets of wallboard attached with long dimension at right angles to furring channels and secured to channels with 1 in. long gypsum wallboard screws on 8-in. centers, except at edge as noted. Care should be taken to drive the screw no farther than flush with the face of the wallboard.  
 When Steel Framing Members (Item 6A) are used, wallboard butt joints shall be staggered min. 2 ft. within the assembly, and occur between the main furring channels. Edge joints may occur beneath the joists. At the wallboard butt joints, each end of the gypsum board shall be supported by a single length of furring channel equal to the width of the wallboard plus 6 in. on each end. The furring channels shall be spaced approximately 3-1/2 in. O.C. and be attached to underside of the joist with one RSC-1 clip at each end of the channel. Gypsum board attached to the furring channels using 1 in. long Type S bugle-head steel screws spaced 8 in. OC along butted end joints and 12 in. OC in the field of the board. Wallboard joints covered with fiber tape and joint compound.
8. Finishing System --- (Not Shown) --- Wallboard joints exposed or covered with fiber tape and joint compound. As an alternate, nom 3/32 in. thick gypsum veneer plaster may be applied to the entire surface of Classified veneer baseboard. Joints reinforced.  
 \*Bearing the UL Classification Mark

Design No. U905

March 17, 2004

STC 48



- Bearing Wall Rating --- 2 HR.  
 Nonbearing Wall Rating --- 2 HR  
 Load Restricted for Canadian Applications --- See Guide BXUV7
1. Concrete Blocks\* --- Various designs, Classification D-2 (2 hr). See Concrete Blocks category for list of eligible manufacturers.
  2. Mortar --- Blocks laid in full bed of mortar, nom. 3/8 in. thick, of not less than 2-1/4 and not more than 3-1/2 joints of clean sharp sand to 1 part Portland cement (proportioned by volume) and not more than 50 percent hydrated lime (by cement volume). Vertical joints staggered.
  3. Portland Cement Stucco or Gypsum Plaster --- Add 1/2 hr to classification if used. Where combustible members are framed in wall, plaster or stucco must be applied on the face opposite framing to achieve a max. Classification of 1-1/2 hr. Attached to concrete blocks (Item 1).
  4. Loose Masonry Fill --- If all core spaces are filled with loose dry expanded slag, expanded clay or shale (Rotary Kin Process), water repellent vermiculite masonry fill insulation, or silicone treated perlite loose fill insulation add 2 hr to classification.
  5. Formed Plastic\* --- (Optional-Not Shown) --- 1-1/2 in. thick max., 4 ft wide sheathing attached to concrete blocks (Item 1). THE DOW CHEMICAL CO --- Type Thermax
- \*Bearing the UL Classification Mark

REVDATE:

1

2

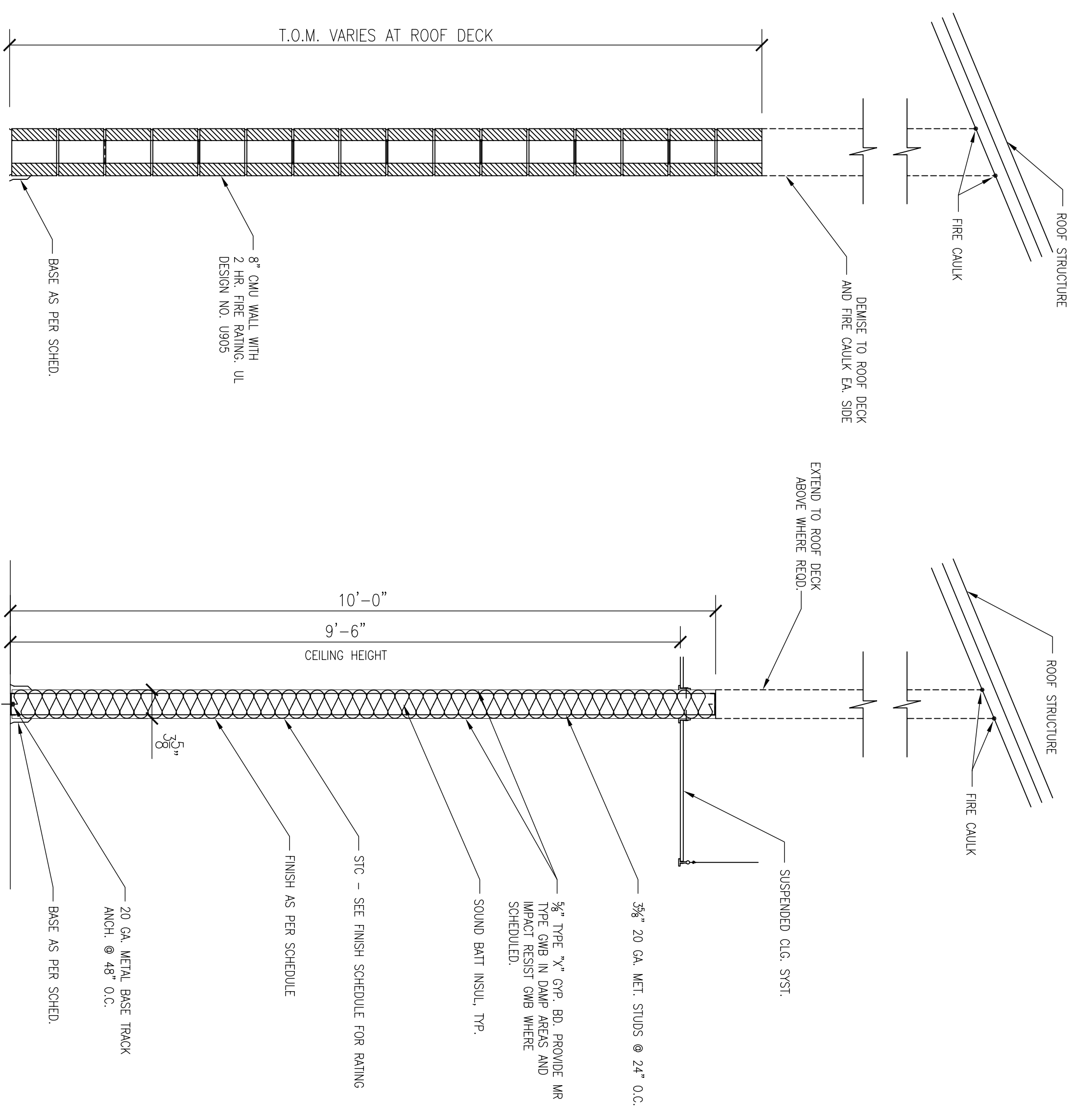
1

2

3

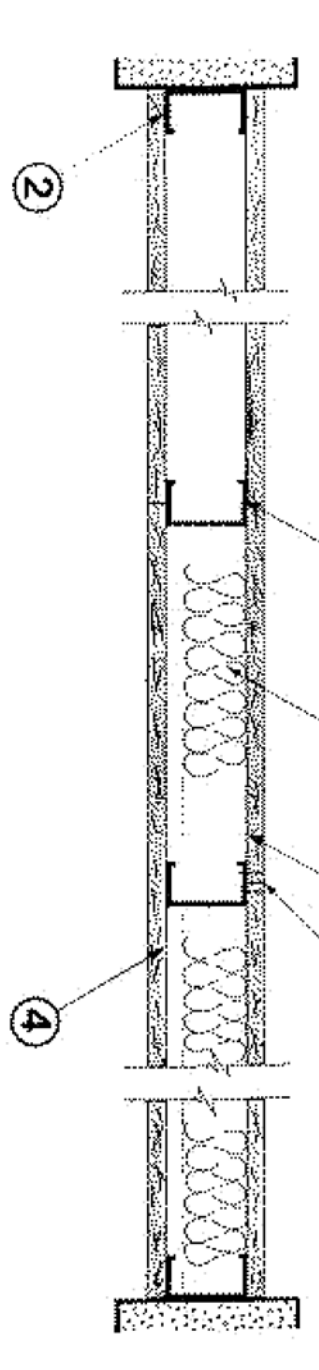
4

5



Design No. U465

April 22, 2009



- Nonbearing Wall Rating 1 HR.
1. Floor and Ceiling Runners - (not shown) - Channel shaped runners, 3-5/8 in. wide (min.), 1-1/4 in. legs, formed from min. No. 25 MSG galv steel, attached to floor and ceiling with fasteners spaced 24 in. O.C. max.
  2. Steel Studs - Channel shaped, 3-5/8 in. wide (min.), 1-1/4 in. legs, 3/8 in. folded back returns, formed from min. No. 25 MSG galv steel spaced 24 in. O.C. max. Studs to be cut 3/4 in. less than assembly height.
  3. Batts and Blankets\* - (Optional) - Mineral wool or glass fiber batts partially or completely filling stud cavity.
  4. Gypsum Board\* - 5/8 in. thick, 4 ft wide, attached to steel studs and floor and ceiling track with 1 in. long, Type S steel screws spaced 8 in. O.C. along edges of board and 12 in. O.C. in the field of the board. Joints oriented vertically and staggered on opposite sides of the assembly. When attached to item 6 (resilient channels) or 6A (furring channels), gypsum board is screw attached to furring channels with 1 in. long, Type S steel screws spaced 12 in. O.C.
  5. Joint Tape and Compound - Vinyl, dry or premixed joint compound, applied in two coats to joints and screw heads; paper tape, 2 in. wide, embedded in first layer of compound over all joints. As an alternate, nominal 3/32 in. thick gypsum veneer plaster may be applied to the entire surface of Classified veneer baseboard. Joints reinforced. Paper tape and joint compound may be omitted when gypsum boards are supplied with square edges.

3

4

5

DEPARTMENT OF THE NAVY NAVAL FACILITIES ENGINEERING COMMAND NAVAL FACILITIES ENGINEERING COMMAND SOUTHEAST IPT SOUTH ATLANTIC NAVAL AIR STATION JACKSONVILLE MISSISSIPPI		JOHN C. STENNIS SPACE CENTER SOF RIVERINE AND COMBATANT CRAFT OPERATIONS FACILITY - PRE-FINAL		DAMMON ENGINEERING, INC. CHIEF ENGINEER DAMMON ENGINEERING, INC. 5000 N. W. 10TH AVE. SUITE 100 MIAMI, FL 33150 (305) 649-8312 FAX: (305) 649-8312	
DESIGNER: J. WATSON CHECKED BY: S. WATSON DATE: 10/2008		REGISTERED PROFESSIONAL ENGINEER EMMETT B. DAMMON JR. NO. 10,2008		CHIEF ENGINEER: P. DAMMON	
TYPICAL SECTIONS AND DETAILS					
A16					