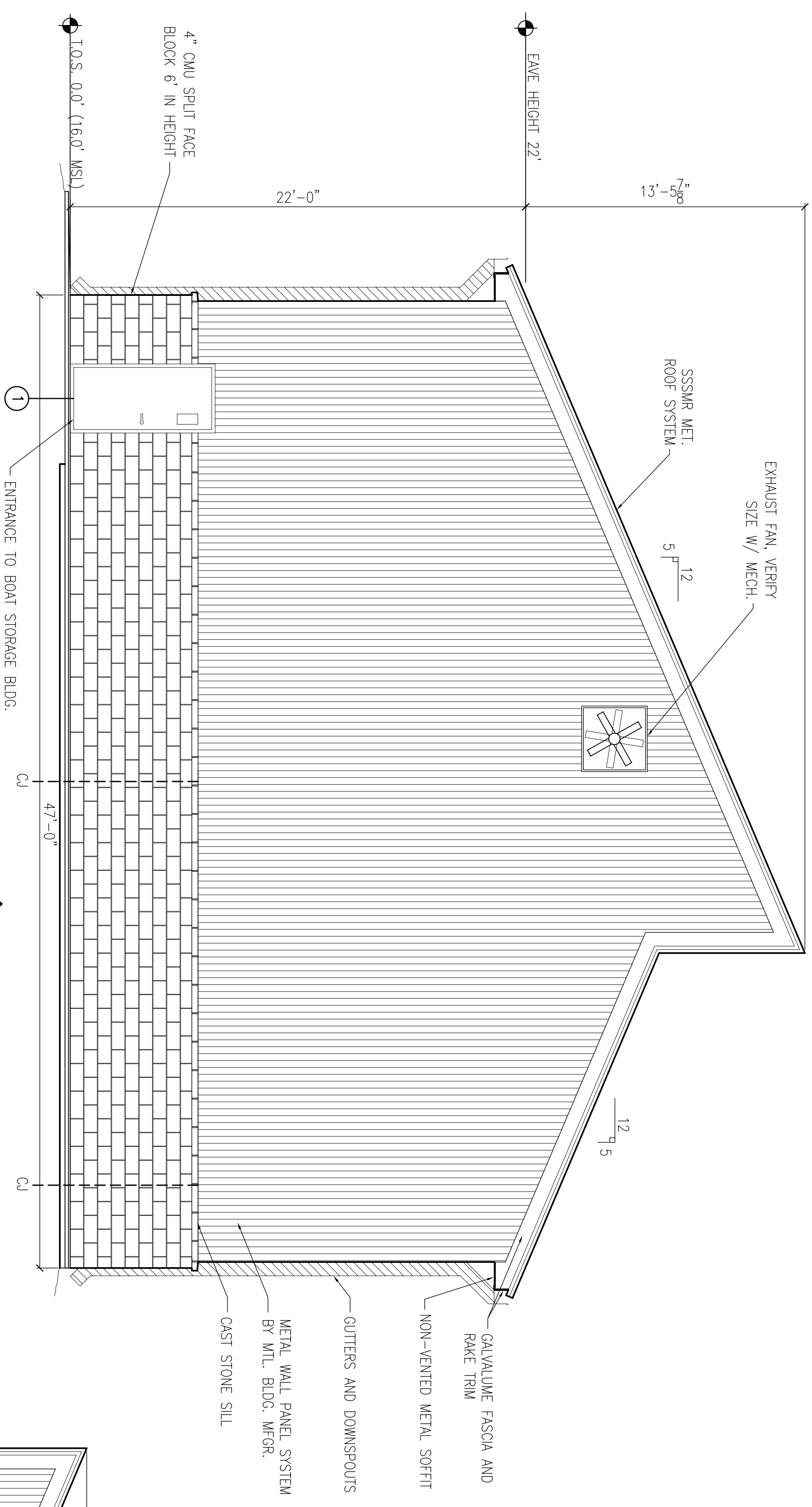


A

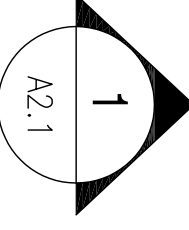
B

C

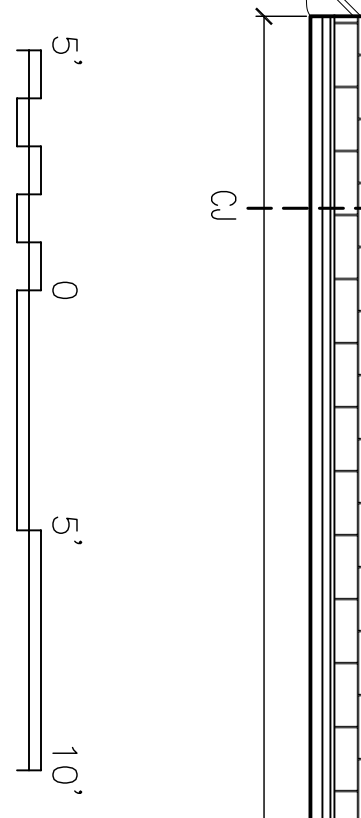
D



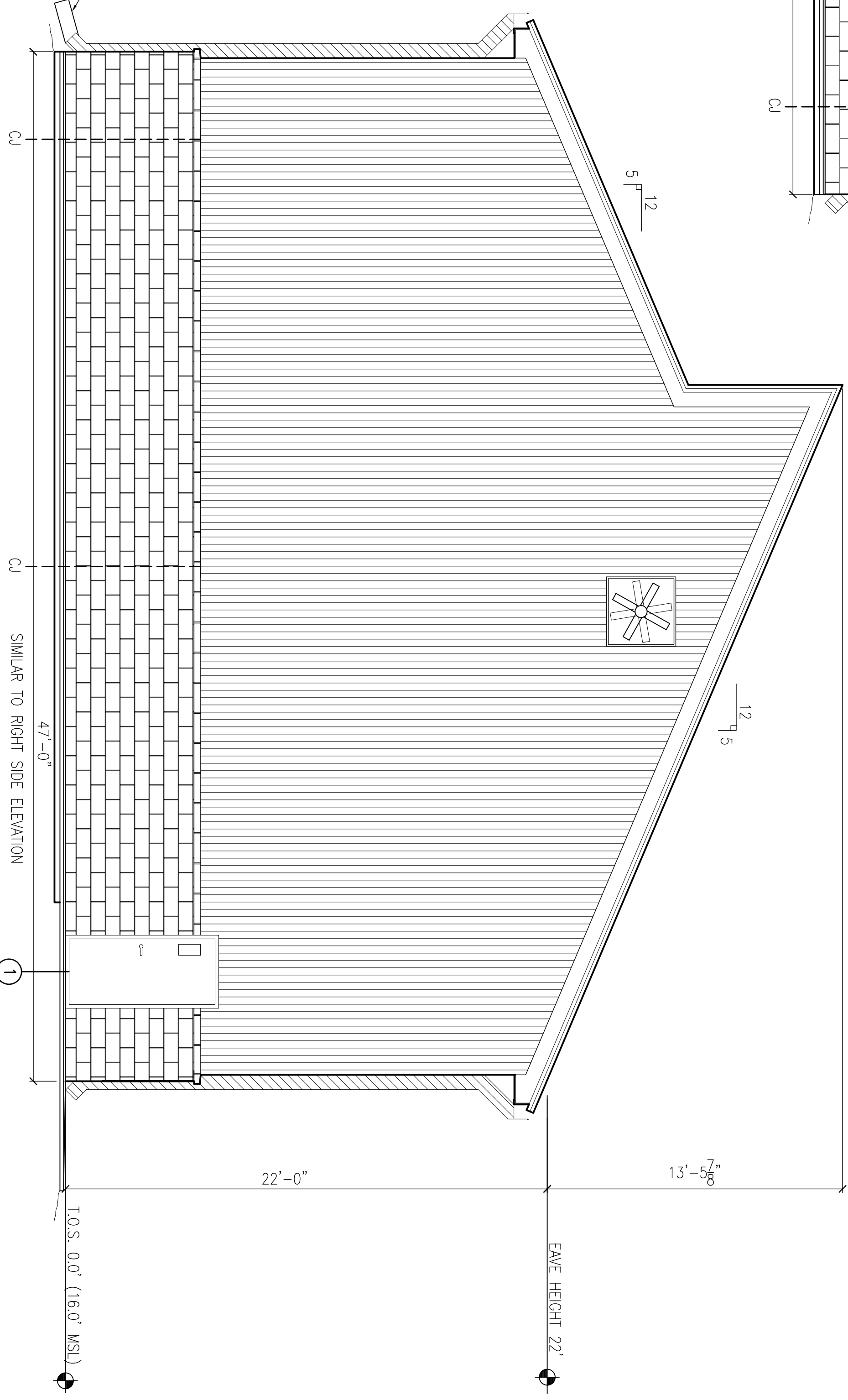
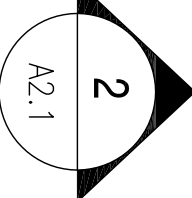
**RIGHT SIDE ELEVATION**  
SCALE: 1/4" = 1'-0"



PRE-CAST CONC.  
SPLASH BLOCK



**LEFT SIDE ELEVATION**  
SCALE: 1/4" = 1'-0"



SIMILAR TO RIGHT SIDE ELEVATION

1

2

3

4

5

1

2

3

4

5

A

B

C

D

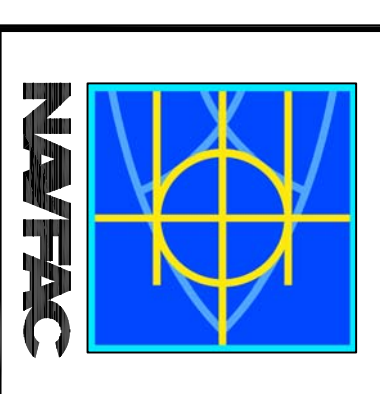
DEPARTMENT OF THE NAVY  
**NAVAL FACILITIES ENGINEERING COMMAND SOUTHEAST**  
 IPT SOUTH ATLANTIC  
 JOHN C. STENNIS SPACE CENTER MISSISSIPPI  
**SOF RIVERINE AND COMBATANT CRAFT OPERATIONS FACILITY - PRE-FINAL**  
**BOAT STORAGE BLDG. 2442 ELEVATIONS**

SCALE: AS SHOWN  
 SHEET NO. P-210  
 WORK ORDER NO. 510247  
 CONSTR. CONTR. NO. N62467-05-0-0096  
 DRAWING NO. #####  
 CHECKED BY: ST/OP/117

NAVAL FACILITIES ENGINEERING COMMAND  
 NAVAL AIR STATION JACKSONVILLE  
 MISSISSIPPI  
 REGISTERED PROFESSIONAL ENGINEER  
 EMMETT B. DAMMON JR.  
 LICENSE NO. 9892  
 STATE OF MISSISSIPPI

RES. R. WATSE DRAW. J. MIFANAY  
 REVIEWED BY: R. WATSE  
 PWD/CLK. T. ARBIB  
 CHIEF ENGINEER: P. DAMMON

**DAMMON**  
 ENGINEERING, INC.  
 10000 W. GULF BLVD. SUITE 200  
 DARMON, LA 70017  
 (985) 649-8832



SYM	DESCRIPTION	DATE	APPR