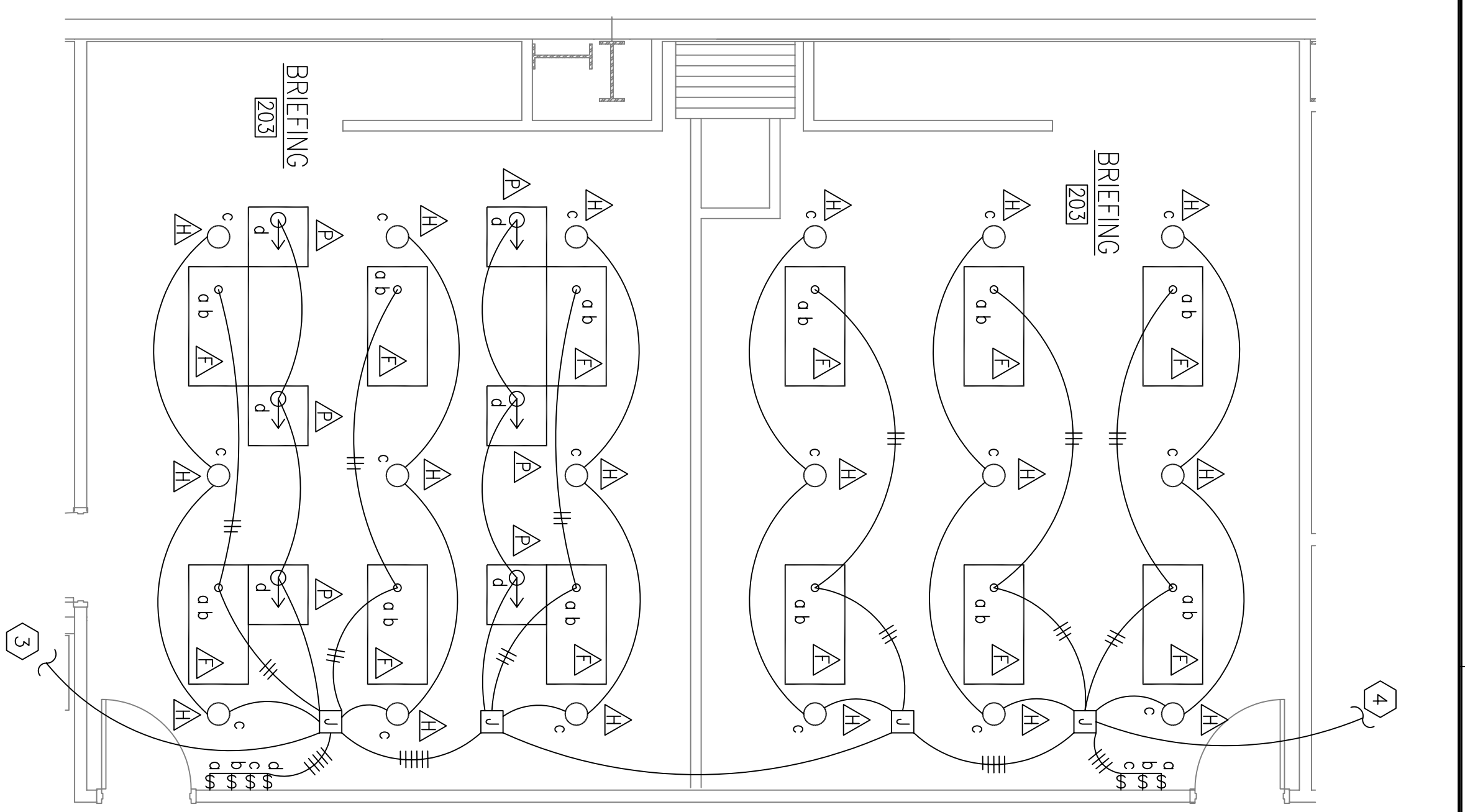


OPERATIONS/MAINTENANCE BLDG 2440/2441
2ND FLOOR PLAN - LIGHTING
SCALE: 1/8"=1'-0"
0 4 8 16'

PLAN NORTH



ENLARGED FLOOR PLAN - BRIEFING ROOM 203
LIGHTING
SCALE: 1/4"=1'-0"
0 2' 4' 8'

PLAN NORTH

GENERAL NOTES, THIS SHEET:

1. ALL FIXTURES TYPE A UNLESS NOTED OTHERWISE.
2. ALL WIRING SHALL BE 3/4"C. 2-#12 AWG AND 1-#12 GRD UNLESS NOTED OTHERWISE.
3. ALL CONDUIT SHALL CONTAIN MINIMUM #12 AWG GROUND WIRE UNLESS NOTED OTHERWISE.
4. MOUNT TYPE E FIXTURES IN MECH/ELEC 213 AT 10'-0" AFF.
5. IN BRIEFING ROOM 203, PROVIDE THE FOLLOWING LIGHT SWITCHES:
 - \$_a 20A, 1P, TOGGLE
 - \$_b 20A, 1P, TOGGLE
 - \$_c 20A, 1P, DIMMER FOR MARK 10 POWERLINE BALLAST
 - \$_d 20A, 1P, TOGGLE

SPECIFIC NOTES, THIS SHEET:

- 1 CONTINUE TO FIRST FLOOR STAIRWAY LIGHT FIXTURES.
- 2 SEE ENLARGED PLAN THIS SHEET FOR CONTINUATION.
- 3 CONTINUE TO ROOM 202.
- 4 CONTINUE TO ROOM 217.

PRE-FINAL SUBMISSION
MAY 15, 2009
NOT FOR CONSTRUCTION

<p>DEPARTMENT OF THE NAVY NAVAL FACILITIES ENGINEERING COMMAND NAVAL FACILITIES ENGINEERING COMMAND SOUTHEAST IPT SOUTH ATLANTIC MISSISSIPPI</p>	<p>JOHN C. STENNIS SPACE CENTER SOF RIVERINE AND COMBATANT CRAFT OPERATIONS FACILITY BLDG 2440 2ND FLOOR PLAN - LIGHTING</p>	<p>DES: K. SCHLAFLY/DRAW: K. SCHLAFLY REVIEWED BY: R. WILISE P/W/DWG: T. ARMBR CHIEF ENG/ARCH: P. DAMMON</p>	<p>STATE OF LOUISIANA M. KIMBALL SCHLAFLY REGISTERED PROFESSIONAL ENGINEER ELECTRICAL ENGINEERING NO. 27699 EXPIRES 12/31/10 LA REG 27699</p>	<p>SCHLAFLY ENGINEERING, LLC 121 SOUTH GENOIS STREET NEW ORLEANS, LA 70119 PHONE: 504-885-7947 FAX: 504-885-7930 M. KIMBALL SCHLAFLY, P.E. LA REG 27699</p>		<table border="1" style="width: 100%; border-collapse: collapse;"> <thead> <tr> <th style="width: 5%;">SM</th> <th style="width: 70%;">DESCRIPTION</th> <th style="width: 10%;">DATE</th> <th style="width: 15%;">APPR</th> </tr> </thead> <tbody> <tr> <td> </td> <td> </td> <td> </td> <td> </td> </tr> </tbody> </table>	SM	DESCRIPTION	DATE	APPR				
SM	DESCRIPTION	DATE	APPR											