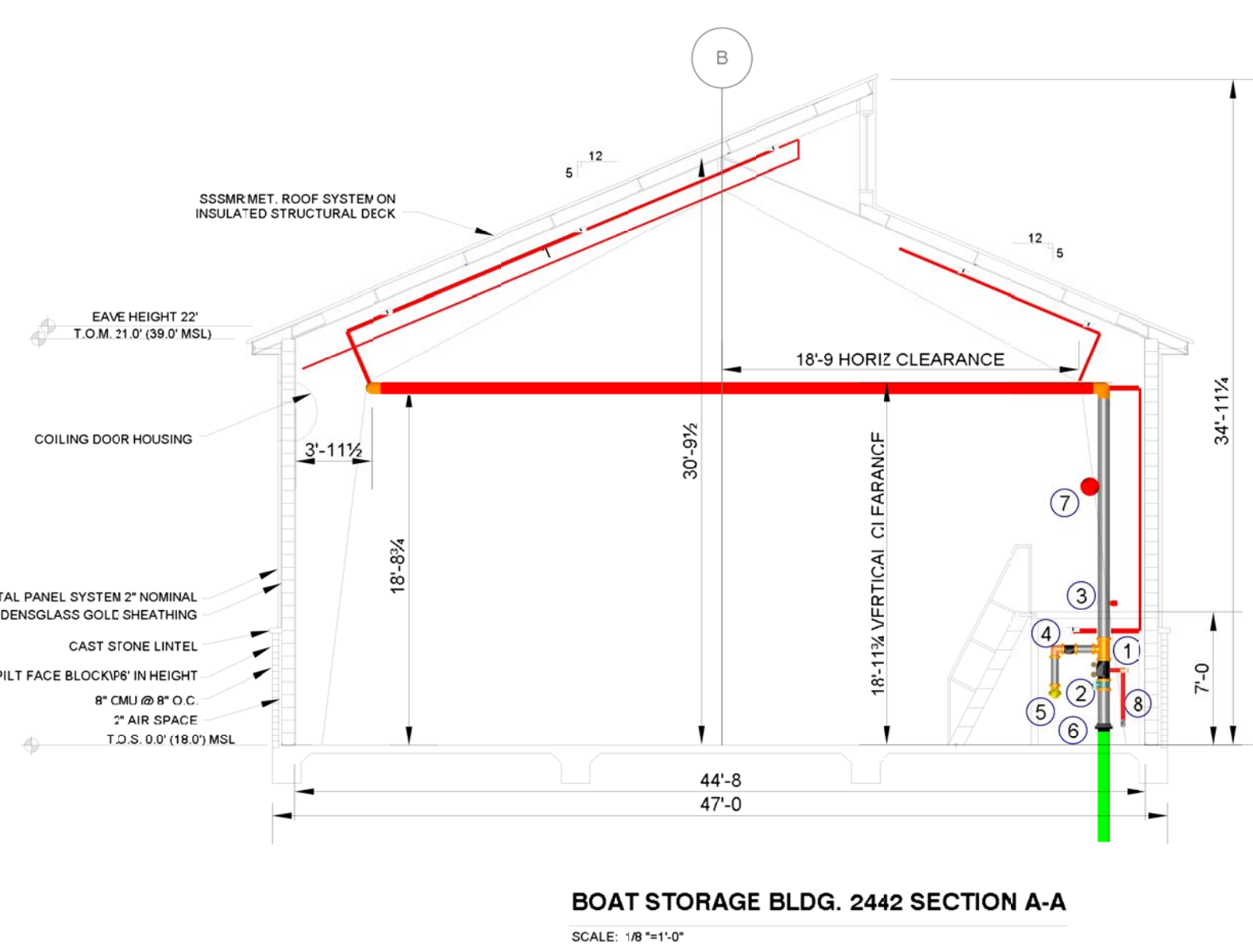


CALCULATION DESIGN CRITERIA:
 STANDARD NFPA #13 - Ord Hazard Gr 2
 OCCUPANCY CLASS: New Business
 MAX. COVERAGE HEAD: 101.25 FT
 DENSITY: .20 GPM/FT² for 3900 FT²
 SPRINKLER: TY-FRB
 ORIFICE: 17/32" K_K: 8.0
 WATER FLOW INFORMATION:
 STATIC: 72.0 PSI
 RESIDUAL: 56.0 PSI
 FLOW: 1100 GPM
 AT CITY CONNECTION SYSTEM REQUIRE:
 956.1 GPM @ 51.3 PSI
 NO HOSE INCLUDED (SEE NOTE #2)

BOAT STORAGE BLDG. 2442 PLAN
 SCALE: 1/8"=1'-0"



RISER EQUIPMENT LEGEND

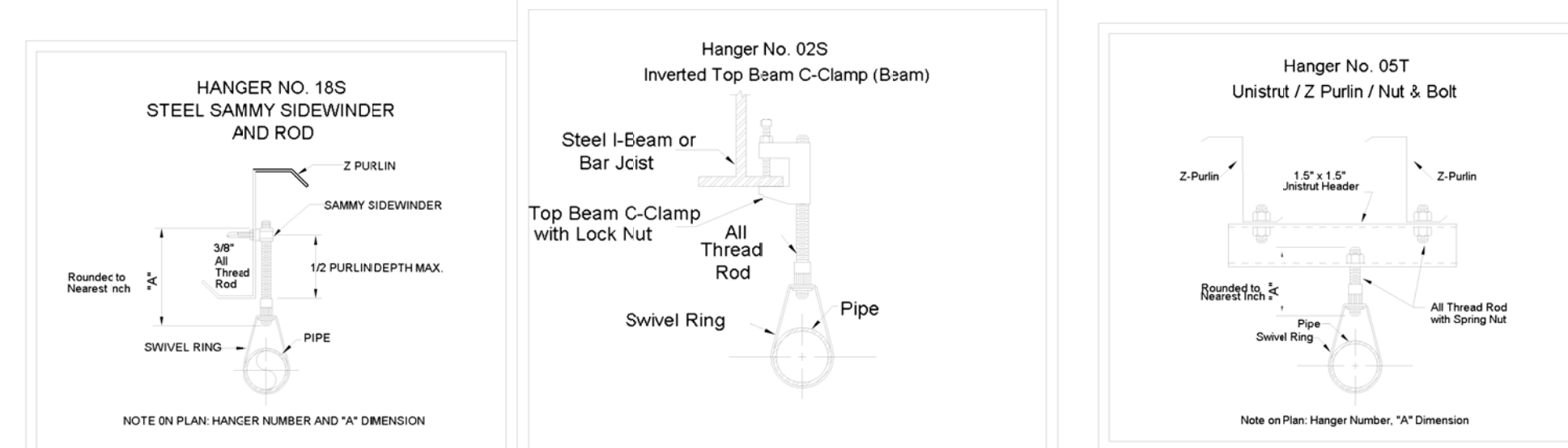
- 1 6" RELIABLE MODEL G RIGHT-CHECK RISER VALVE
- 2 6" GROOVED BUTTERFLY VALVE W/ TAMPER SWITCH
- 3 6" FLOW SWITCH
- 4 4" TYCO MODEL CV-1F CHECK VALVE
- 5 4" X 2 1/2" X 2 1/2" FIRE DEPARTMENT CONNECTION NST
- 6 6" X 11" SCR FLANGE
- 7 24V ELECTRIC BELL OUTSIDE
- 8 2" DRAIN & ITC TO OUTSIDE

NEW SPRINKLERS							
TYPE	SIN	ORIFICE	TEMP	FINISH	CANOPY	SYMBOL	QTY
TYCO TY-FRB QR	TY4131	17/32"	155 F	BRASS	UPRIGHT		102
TOTAL THIS SHEET							102

GENERAL NOTES

- 1) SCOPE OF WORK
 SIMPLEXGRINNELL TO PROVIDE TWO NEW FIRE SPRINKLER SYSTEM (1) FOR THE NEW OPERATIONS BLDG #2440 & THE BOAT MAINTENANCE BLDG #2441, AND (1) FOR THE BOAT STORAGE BLDG #2442.
- 2) BASIS OF DESIGN:
 LIGHT HAZARD AREAS - DESIGN DENSITY: .10 GPM/SQ. FT. OVER 3000 SQ. FT.
 ORDINARY HAZARD GROUP 1 - DESIGN DENSITY: .15 GPM/SQ. FT. OVER 3000 SQ. FT.
 ORDINARY HAZARD GROUP 2 - DESIGN DENSITY: .20 GPM/SQ. FT. OVER 3000 SQ. FT.
 AREA HAS BEEN INCREASED BY 30% WHERE ROOF SLOPE EXCEEDS 2:12 AS PER NFPA 13 11.2.3.2.4.
 AS DIRECTED BY THE FPE FOR NAVFAC SOUTHEAST, THE HOSE ALLOWANCE HAS BEEN DELETED FROM ALL CALCULATIONS. THE 500 GPM HOSE ALLOWANCE REQUIRED BY UFC 3-600-01 PUSHES THE DEMAND OVER THE SUPPLY CURVE.
- 3) PIPE AND FITTINGS
 1 1/2" AND SMALLER PIPE TO BE THREADED BLACK SCH 40 WITH BLACK C.I. SCREW FITTINGS.
 2" AND LARGER PIPE TO BE GROOVED BLACK SCH 10 WITH GROOVED FITTINGS & COUPLINGS AND WELDED OUTLETS
 SPRINKLER DROPS TO BE "FLEXHEAD" TYPE DROPS. SPRINKLERS TO BE CENTER OF TILE.
- 4) HANGERS
 ALL HANGERS AND SUPPORTS TO CONFORM TO NFPA 13 AND PIPE MANUFACTURERS RECOMMENDATIONS.
- 5) FIRE CAULKING
 ALL PENETRATIONS THROUGH FIRE RATED WALLS ARE TO BE SEALED WITH FIRE CAULK TO MAINTAIN THE FIRE RATING.
- 6.) SPRINKLER SYSTEMS SHALL INCLUDE EARTHQUAKE PROTECTION PER D401001 1.2.

ALL MATERIAL TO BE AMERICAN MADE



NOTE: ALL HANGERS TO BE # 18S U.O.N.

APPR. DATE

SYM. DESCRIPTION

tyco
 Fire & Security
SimplexGrinnell
 5800 JEFFERSON HWY., STE. A
 HARAHAN, LOUISIANA 70123

AE LOGO

SEAL

DES. REVIEWED BY. DRW.
 PMOM
 CHIEF ENGINEER

DEPARTMENT OF THE NAVY
 NAVFAC SOUTHEAST
 JOHN C. STENNIS SPACE CENTER, MISSISSIPPI
SOF RIVERINE AND COMBATANT CRAFT OPERATIONS FACILITY
 BOAT STORAGE BLDG 2442

CODE ID: NO. 80091 SIZE: D
 SCALE: 1/8" = 1'-0"
 MAX/MO NO.
 STA. PROJ. NO.
 WORK ORDER NO.
 CONSTR. CONTR. NO.

NAVFAC DRAWING NO.

SHEET OF
 SIMPLEXGRINNELL SH #FP-2
 SG JOB # 269-941989101

DRAWING REVISION 01 JAN 2009
 PLOTTED 14:38:38 04/29/05
 FILE: FP-2 BLDG 2442 042509

REVDATE: